

askjorgelopez.com
281-205-0352
22702 Tomball Parkway
Tomball, TX 77375

Ask Jorge Lopez

2024 Ford Expedition MAX XLT

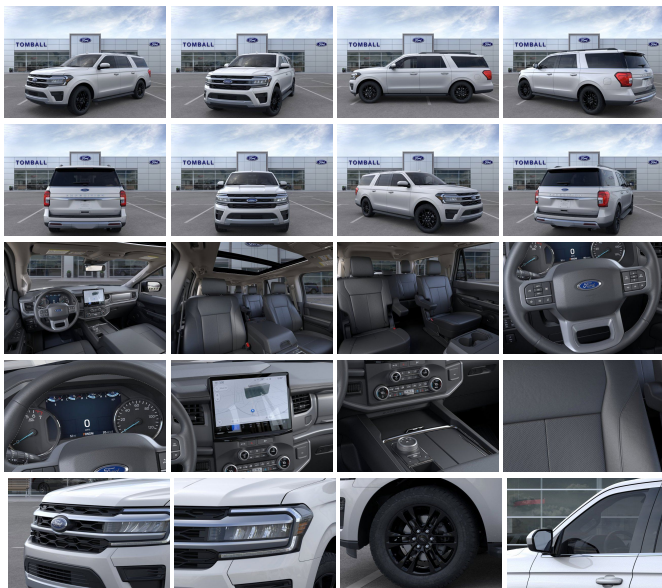
View this car on our website at askjorgelopez.com/7247249/ebrochure



Our Price **\$70,955**

Specifications:

Year: 2024
VIN: 1FMJK1H85REA17502
Make: Ford
Stock: EA17502
Model/Trim: Expedition MAX XLT
Condition: New
Body: SUV
Exterior: ICONIC SILVER METALLIC
Engine: EcoBoost 3.5L Twin Turbo V6 380hp
 470ft. lbs.
Interior: XLT ACTIVEEX BUCKET SEATS BLACK
 ONYX Cloth
Transmission: 10-Speed Shiftable Automatic
Mileage: 773
Drivetrain: Rear Wheel Drive



"Purchasing the perfect vehicle couldn't be easier! Make the right choice with this reliable 2024 Ford Expedition Max. Tire Specific Low Tire Pressure Warning, Side Impact Beams, Safety Canopy System Curtain 1st, 2nd And 3rd Row Airbags, Reverse Sensing System Rear Parking Sensors, Rear Child Safety Locks.*Fully-Loaded with Additional Options*EQUIPMENT GROUP 202A HIGH PACKAGE -inc: Wireless Charging Pad, Located in media hub, Power Liftgate, 2nd Row Power-Folding Captain's Chairs, armrests and tip-and-slide, Accent Color Painted Rear Bumper, Heated Steering Wheel, Heated/Ventilated Front Seats, 110V/150W AC Power Outlet, Power-Folding Sideview Mirrors w/Autofold, power and heated glass, turn signal indicators, security approach lamps, driver/passenger side memory, driver's side auto-dimming and body-color caps, 3rd Row Vinyl Power-Folding Head Restraints, power recline, 4-Door Intelligent Access (Lock/Unlock), Power-Adjustable Pedals w/Memory, SecuriCode Keyless Entry Keypad, Power Tilt/Telescopic Steering Wheel w/Memory, Ambient Lighting, Remote Start, Advanced Security Pack, SecuriLock Passive Anti-Theft System (PATS) and inclination/intrusion sensors, TRANSMISSION: 10-SPEED AUTOMATIC W/SELECTSHIFT (STD), PANORAMIC VISTA ROOF -inc: power open/close w/power shade, ICONIC SILVER METALLIC, FRONT LICENSE PLATE BRACKET -inc: Standard in states requiring two license plates and optional to all others, EQUIPMENT GROUP 202A HIGH PACKAGE -inc: Wireless Charging Pad, Located in media hub, Power Liftgate, 2nd Row Power-Folding Captain's Chairs, armrests and tip-and-slide, Accent Color Painted Rear Bumper, Heated Steering Wheel, Heated/Ventilated Front Seats, 110V/150W AC Power Outlet, Power-Folding Sideview Mirrors w/Autofold, power and heated glass, turn signal indicators, security approach lamps, driver/passenger side memory, driver's side auto-dimming and body-color caps, 3rd Row Vinyl Power-Folding Head Restraints, power recline, 4-Door Intelligent Access (Lock/Unlock), Power-Adjustable Pedals w/Memory, SecuriCode Keyless Entry Keypad, Power Tilt/Telescopic Steering Wheel w/Memory, Ambient Lighting, Remote Start, Advanced Security Pack, SecuriLock Passive Anti-Theft System (PATS) and inclination/intrusion sensors, ENGINE: 3.5L ECOBOOST V6 (STD), Window Grid Antenna, Wheels: 18" Machined-Face Aluminum -inc: magnetic-painted pockets, Vinyl Door Trim Insert.* Visit Us Today *Stop by Tomball Ford located at 22702 Tomball Parkway, Tomball, TX 77375 for a quick visit and a great vehicle!"

2024 Ford Expedition MAX XLT

Ask Jorge Lopez - 281-205-0352 - View this car on our website at askjorgelopez.com/7247249/ebrochure

Our Location :



2024 Ford Expedition MAX XLT

Ask Jorge Lopez - 281-205-0352 - View this car on our website at askjorgelopez.com/7247249/ebrochure

Installed Options

Interior

- Air filtration- Front air conditioning: automatic climate control
- Front air conditioning zones: dual- Rear air conditioning: automatic climate control
- Rear vents: third row- Floor mat material: carpet- Floor mats: front
- Steering wheel trim: leather- Capless fuel filler system- Cargo area light- Cruise control
- Multi-function remote: keyless entry- Power outlet(s): 12V cargo area
- Power steering: variable/speed-proportional- Push-button start
- Rearview mirror: auto-dimming- Steering wheel: tilt and telescopic
- Universal remote transmitter: garage door opener- Clock- Compass- Digital odometer
- External temperature display- Instrument cluster screen size: 8 in.- Multi-function display
- Trip odometer- Driver seat power adjustments: 8- Front seat type: bucket
- Rear seat folding: flat- Rear seat type: 40-20-40 split bench
- Third row seat folding: fold flat into floor- Third row seat type: 40-60 split bench
- Upholstery: cloth

Exterior

- Active grille shutters- Grille color: black with chrome accents- Mirror color: body-color
- Running boards- Daytime running lights- Exterior entry lights: approach lamps
- Front fog lights- Side mirrors: heated- Roof rails: black- Spare wheel type: steel
- Tire Pressure Monitoring System- Wheels: aluminum alloy with painted accents
- Laminated glass: acoustic- Liftgate window: manual flip-up
- Power windows: safety reverse- Rear privacy glass- Rear wiper: intermittent
- Solar-tinted glass: front- Window defogger: rear

Ask Jorge Lopez
askjorgelopez.com
281-205-0352

22702 Tomball Parkway
Tomball, TX 77375

© 2024 AutoRevo - All rights reserved. - Powered by [AutoRevo](#)