



2016 Nissan Pathfinder 4WD 3RD ROW

Our Price \$14,995

Retail Value \$16,995

View this vehicle on our website at autosourcehawaii.com

autosource

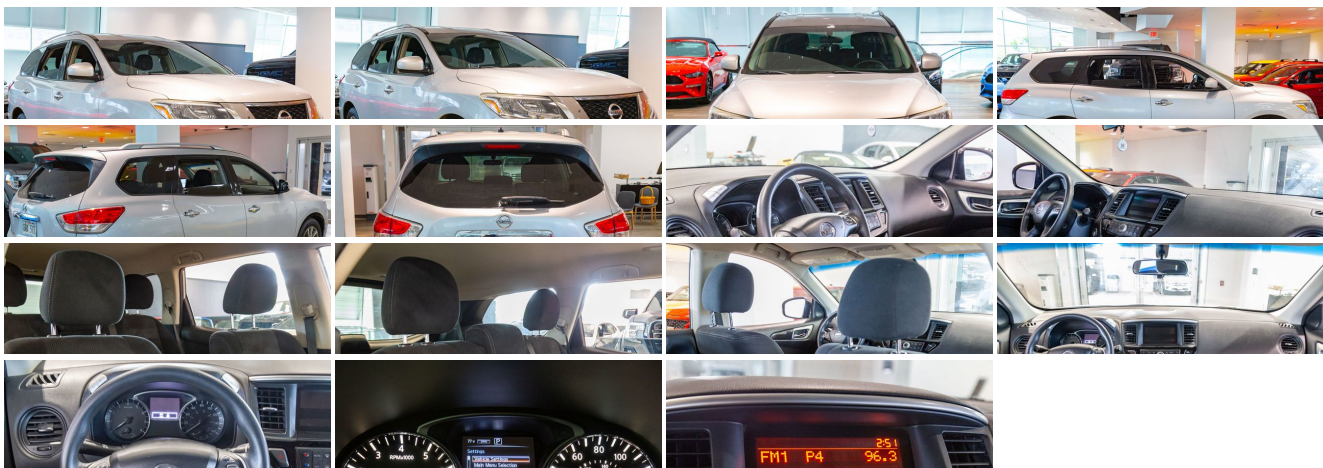
(808) 597-8522

1488 Kapiolani Blvd , Honolulu, HI 96814

Photos

Details

Contact



Specifications:

Year:	2016
VIN:	5N1AR2MMXGC638585
Make:	Nissan
Stock:	A001637
Model/Trim:	Pathfinder 4WD 3RD ROW
Condition:	Pre-Owned
Body:	SUV
Exterior:	Brilliant Silver Metallic
Engine:	3.5L V6 260hp 240ft. lbs.
Interior:	Charcoal Cloth
Transmission:	CVT
Mileage:	59,505
Drivetrain:	4 Wheel Drive
Economy:	City 19 / Highway 26

Vehicle Description

Introducing the 2016 Nissan Pathfinder 4WD, a dynamic blend of performance, style, and versatility designed to elevate your driving experience. With just 59,505 miles on the odometer, this exceptional SUV is ready to embark on new adventures with you and your family. Awarded Kelley Blue Book's Best Family Cars, the Pathfinder is celebrated for its outstanding combination of safety, comfort, and reliability, making it the perfect choice for families on the go.

The Pathfinder's sleek silver exterior is not just a color, but a statement of sophistication and modernity. Its body-color front bumper and mirror accents seamlessly integrate with the chrome door handles and roof rails, exuding a sense of elegance and style. The roofline rear spoiler adds a sporty touch, enhancing the vehicle's aerodynamic profile while maintaining practicality.

Step inside to discover a spacious interior adorned with sumptuous black cloth seating, offering a comfortable and inviting atmosphere for both driver and passengers. The third-row seating ensures ample space for everyone, making long journeys enjoyable and stress-free. The cabin is thoughtfully designed with power windows and solar-tinted glass, providing a serene environment by reducing glare and keeping the interior cool.

Under the hood lies a robust 3.5L V6 engine, delivering an impressive 260 horsepower and 240 ft. lbs. of torque. Paired with a seamless CVT transmission, the Pathfinder offers a smooth and responsive ride, whether you're navigating city streets or exploring off-the-beaten paths. The 4WD system enhances your confidence behind the wheel, providing superior traction and stability across various terrains and weather conditions.

Safety and convenience are at the forefront of the Pathfinder's design. The Tire Pressure Monitoring System ensures optimal tire performance, enhancing safety and fuel efficiency. The rear privacy glass not only adds a touch of sophistication but also provides privacy and protection for your loved ones. With intermittent rear wipers and variable front wipers, visibility is maximized, ensuring clear sightlines in any weather.

Music lovers will appreciate the speed-sensitive volume control and radio data system, allowing you to enjoy your favorite tunes with crystal-clear sound quality. The aluminum alloy wheels not only enhance the vehicle's aesthetic appeal but also contribute to a smoother, more efficient ride.

The 2016 Nissan Pathfinder is more than just a vehicle; it's a trusted companion ready to tackle any journey you have in mind. Its award-winning reputation as a top family car attests to its exceptional performance and reliability. With its low mileage and meticulously maintained condition, this Pathfinder is poised to deliver years of driving pleasure.

Don't miss the opportunity to own this remarkable SUV that combines style, power, and practicality in one irresistible package. Contact us today to schedule a test drive and experience firsthand the unparalleled capabilities of the 2016 Nissan Pathfinder 4WD. Your next great adventure awaits!

Vehicle History Report : as Of 07/11/2025



Snapshot

2016 NISSAN PATHFINDER S



No accidents or damage reported to CARFAX



15 Service history records



At least 1 open recall



6 Previous owners



Types of owners: Rental, Personal, Lease



59,505 Last reported odometer reading



FREE CARFAX Report

See the full CARFAX Report for additional information

*carfax Snapshot is a reflection of available information on the date the report was pulled. carfax is constantly being updated with new information and is subject to change at any time.

Installed Options

Interior

- Air filtration- Front air conditioning: automatic climate control
- Front air conditioning zones: dual - Rear air conditioning: automatic climate control
- Armrests: rear center folding with storage- Interior accents: chrome- Cruise control
- Multi-function remote: proximity entry system- Power outlet(s): 12V cargo area
- Power steering: variable/speed-proportional- Push-button start- Clock- Digital odometer
- External temperature display- Multi-function display- Trip odometer
- Front seat type: bucket- Rear seat folding: flat- Rear seat type: 60-40 split bench
- Third row seat folding: flat- Third row seat type: 50-50 split bench

Exterior

- Door handle color: chrome- Front bumper color: body-color- Mirror color: body-color
- Rear spoiler: roofline- Roof rails: chrome- Spare wheel type: steel
- Tire Pressure Monitoring System- Wheels: aluminum alloy
- Front wipers: variable intermittent- Power windows- Rear privacy glass
- Rear wiper: intermittent- Solar-tinted glass- Window defogger: rear

Autosource Hawaii

Autosource Hawaii

View this car on our website at autosourcehawaii.com/7247109

Website: autosourcehawaii.com

Phone: (808) 597-8522

Map: [1488 Kapiolani Blvd, Honolulu, HI 96814](#)

