

2009 Dodge Ram 1500 SLT

View this car on our website at autosourcehawaii.com/7246904/ebrochure



Our Price **\$21,995**

Retail Value ~~\$23,995~~

Specifications:

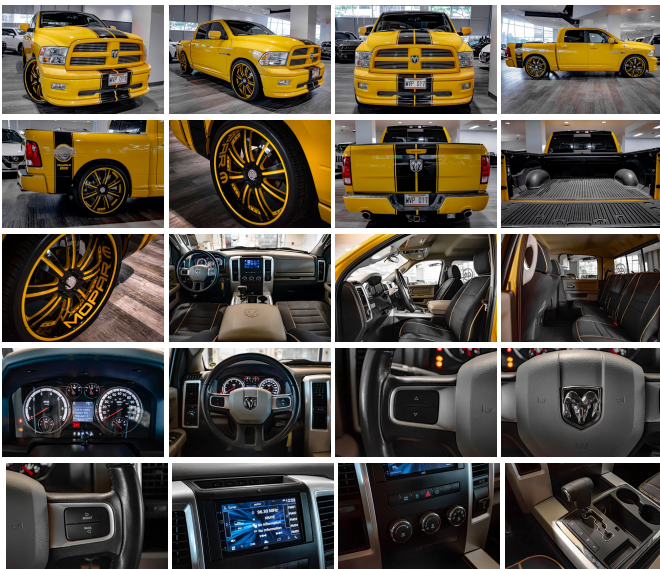
Year:	2009
VIN:	1D3HB13T39S707983
Make:	Dodge
Stock:	9S707983
Model/Trim:	Ram 1500 SLT
Condition:	Pre-Owned
Body:	Pickup Truck
Exterior:	Detonator Yellow
Engine:	HEMI 5.7L V8 390hp 407ft. lbs.
Interior:	Dark slate gray
Transmission:	5-Speed Automatic
Mileage:	88,340
Drivetrain:	Rear Wheel Drive
Economy:	City 14 / Highway 20

Step into the world of robust power and eye-catching style with the 2009 Dodge Ram 1500 SLT, a truck that's not just a vehicle, but a statement on wheels. With a mere 88,340 miles on the odometer, this Ram is primed and ready to deliver the performance and reliability synonymous with its name.

Let's talk about presence. The exterior of this Dodge Ram gleams in a rare and vibrant yellow, ensuring you'll stand out from the crowd whether you're cruising down the highway or pulling up to the job site. This truck isn't just about looks, though; it's a powerhouse waiting to be unleashed. Beneath the hood lies the legendary HEMI 5.7L V8 engine, producing a breathtaking 390 horsepower and 407 ft-lbs of torque. Paired with a smooth-shifting 5-Speed Automatic transmission, this Ram delivers a driving experience that's as exhilarating as it is dependable.

Step inside to discover a spacious and practical gray interior that's all about comfort and convenience. The durable carpeted floor mats keep things clean, while the easy-to-clean surfaces ensure that your cabin remains pristine. The rear seat folds up effortlessly, offering ample space for your gear, tools, or even a weekend's worth of adventure essentials.

The 2009 Dodge Ram 1500 SLT is not just a truck; it's a mobile command center. The multi-function remote with keyless entry provides easy access, while the power windows and power steering offer a touch of luxury to your daily drive. The 12V power outlet ensures that your devices stay charged and ready to go, and the power side mirror adjustments let you find the perfect viewing angle with the push of a



button.

Safety and convenience are paramount, and this Ram doesn't disappoint. The Tire Pressure Monitoring System keeps you informed and safe, while the rear privacy glass offers both security and protection from the sun's glare. Not to mention, the pickup bed light illuminates your cargo, making loading and unloading a breeze, even in low-light conditions.

Let's not forget the accolades. This 2009 Dodge Ram 1500 SLT isn't just another truck; it's a recipient of Edmunds's Top Recommended Trucks, a top model in J.D. Power and Associates's APEAL Study, and a finalist for Kelley Blue Book's Best Redesigned Vehicle. These awards aren't just titles; they're a testament to the quality, performance, and satisfaction that this Ram delivers.

Imagine the possibilities as you sit behind the wheel of this exceptional 2009 Dodge Ram 1500 SLT. Whether it's for work, play, or anything in between, this truck is ready to tackle it all with grace and gusto. Don't let this opportunity slip away. Embrace the power, embrace the style, and drive home in a truck that's as unique and capable as you are. Your new adventure begins here, with the turn of a key.

2009 Dodge Ram 1500 SLT

Autosource Hawaii - (808) 597-8522 - View this car on our website at autosourcehawaii.com/7246904/ebrochure

Vehicle History Report : as Of 05/12/2024



Snapshot

2009 DODGE RAM 1500 SLT



No accidents or damage reported to CARFAX



21 Service history records



4 Previous owners



Types of owners: Commercial
Personal



Last owned in Hawaii



88,340 Last reported odometer reading



FREE CARFAX Report

See the full CARFAX Report for additional information

*carfax Snapshot is a reflection of available information on the date the report was pulled. carfax is constantly being updated with new information and is subject to change at any time.

Our Location :



Installed Options

Interior

- Floor mat material: carpet- Floor mats: front- Ashtray
- Multi-function remote: keyless entry- Power outlet(s): 12V- Power steering
- Powertrain hour meter- Rear seat folding: folds up

Exterior

- Pickup bed light- Side mirror adjustments: power- Spare wheel type: steel
- Tire Pressure Monitoring System- Front wipers: variable intermittent
- Power windows: front- Rear privacy glass