

2009 BMW X6 xDrive35i

View this car on our website at autosourcehawaii.com/7246778/ebrochure



Our Price **\$19,995**

Retail Value **\$21,995**

Specifications:

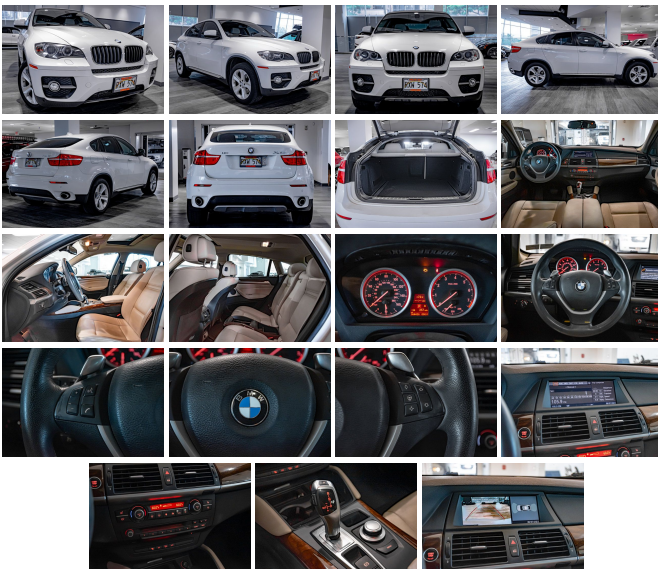
Year:	2009
VIN:	5UXFG43559L224363
Make:	BMW
Stock:	9L224363
Model/Trim:	X6 xDrive35i
Condition:	Pre-Owned
Body:	SUV
Exterior:	White
Engine:	3.0L Twin Turbo I6 300hp 300ft. lbs.
Interior:	Black Leather
Transmission:	6-Speed Shiftable Automatic
Mileage:	64,436
Drivetrain:	All Wheel Drive
Economy:	City 15 / Highway 20

Step into the world of luxury and performance with this exquisite 2009 BMW X6 xDrive35i, a vehicle that not only embodies sophistication but also delivers a driving experience like no other. With a mere 64,436 miles on the odometer, this pristine white beauty is primed and ready to take you on a journey of pure pleasure.

As you approach this automotive masterpiece, the first thing that catches your eye is the lustrous white exterior that exudes elegance and class. The body-color front bumper and dual-tip exhaust accentuate the sporty stance, while the black grille with chrome accents adds a touch of finesse that BMW is renowned for. The adaptive taillights, daytime running lights, and approach lamps ensure you make a grand entrance, day or night.

Slide into the driver's seat and immerse yourself in the luxurious black leather interior, a sanctuary of comfort and style. The power-adjustable side mirrors with auto-dimming functionality offer convenience at your fingertips, ensuring a clear view of your surroundings. The ambiance within the cabin is enhanced by the meticulously designed 12-speaker sound system with two subwoofers, providing an acoustic experience that will make every drive a memorable event.

At the heart of this engineering marvel is the 3.0L Twin Turbo I6 engine, delivering a robust 300 horsepower and 300 ft. lbs. of torque. This powerplant is a testament to BMW's dedication to performance, earning them the prestigious Kelley Blue Book's Brand Image Awards for Best Performance Brand. The 6-Speed Shiftable Automatic transmission offers seamless shifts and the ability to take control when the roads demand it, ensuring exhilaration at every turn.



Driving the X6 xDrive35i is more than just a commute; it's an adventure. The intelligent all-wheel-drive system provides unmatched stability and traction, allowing you to conquer any terrain with confidence. Whether you're navigating through inclement weather or taking on winding roads, this vehicle offers a driving dynamic that is both secure and invigorating.

This BMW X6 is not just about power and poise; it's also about practicality. The included steel spare wheel ensures that you're prepared for the unexpected, keeping you on the move without a hitch. Safety is paramount, and with features like front fog lights that enhance visibility, you can rest assured that your well-being is taken care of.

As a recipient of the Kelley Blue Book's Brand Image Awards for Best Exterior Design Brand - Luxury and Coolest Brand, this BMW X6 xDrive35i stands as a testament to the automaker's commitment to excellence in both aesthetics and performance.

Don't miss the opportunity to own a vehicle that offers the perfect blend of luxury, power, and prestige. This 2009 BMW X6 xDrive35i is more than just a car; it's a statement. A statement that says you appreciate the finer things in life, you demand the best in performance, and you understand the value of a well-crafted automobile. Contact us today to schedule a test drive and experience the thrill of BMW engineering at its finest. Your journey to automotive bliss starts here.

2009 BMW X6 xDrive35i

Autosource Hawaii - (808) 597-8522 - View this car on our website at autosourcehawaii.com/7246778/ebrochure

Vehicle History Report : as Of 04/28/2024



Snapshot

2009 BMW X6 XDRIVE35I



Damage reported: minor damage



15 Service history records

4 Previous owners

Personal vehicle

64,436 Last reported odometer reading



FREE CARFAX Report

See the full CARFAX Report for additional information

*carfax Snapshot is a reflection of available information on the date the report was pulled. carfax is constantly being updated with new information and is subject to change at any time.

Our Location :



Installed Options

Interior

- Air filtration: active charcoal- Front air conditioning: automatic climate control
- Front air conditioning zones: dual- Center console trim: alloy- Dash trim: alloy
- Door trim: alloy- Shift knob trim: alloy- Steering wheel trim: leather
- Cargo cover: retractable- Cruise control- Memorized settings: driver seat
- Multi-function remote: keyless entry- Power steering: variable/speed-proportional
- Push-button start- Steering wheel: power tilt and telescopic- External temperature display
- Trip odometer- Driver seat power adjustments: 10- Front seat type: bucket
- Passenger seat power adjustments: 10- Rear seat folding: split- Rear seat type: bucket
- Upholstery: leather

Exterior

- Exhaust: dual tip- Front bumper color: body-color- Grille color: black with chrome accents
- Mirror color: body-color- Daytime running lights- Exterior entry lights: approach lamps
- Front fog lights- Taillights: adaptive- Side mirror adjustments: power
- Side mirrors: auto-dimming- Spare wheel type: steel- Tire Pressure Monitoring System
- Heated windshield washer jets- Rear wiper: with washer- Window defogger: rear

Autosource Hawaii

autosourcehawaii.com

(808) 597-8522

1488 Kapiolani Blvd

Honolulu, HI 96814

© 2024 AutoRevo - All rights reserved. - Powered by AutoRevo