

2018 Mercedes-Benz GLA 250 (SALE)

View this car on our website at autosourcehawaii.com/7246723/ebrochure

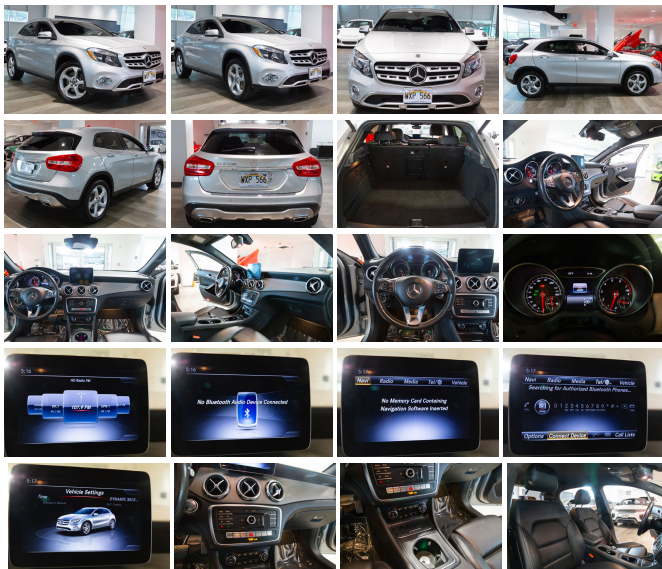


Our Price **\$21,995**

Retail Value **\$26,995**

Specifications:

Year:	2018
VIN:	WDCTG4EB3JJ460236
Make:	Mercedes-Benz
Stock:	A000160
Model/Trim:	GLA 250 (SALE)
Condition:	Pre-Owned
Body:	SUV
Exterior:	Silver
Engine:	2.0L Turbo I4 208hp 258ft. lbs.
Interior:	Black Leather
Transmission:	7-Speed Double Clutch
Mileage:	48,808
Drivetrain:	Front Wheel Drive
Economy:	City 24 / Highway 33



Step into the realm of refined luxury and unparalleled performance with our exquisite 2018 Mercedes-Benz GLA 250. With a mere 48,808 miles on the odometer, this stellar vehicle is poised to deliver an invigorating driving experience wrapped in the timeless elegance of its silver exterior.

The allure of the GLA 250 begins with its sleek, aerodynamic profile, accentuated by the shimmering body-color front bumper and rear spoiler that promise both style and functionality. LED daytime running lights not only enhance visibility during your daytime travels but also add a touch of sophistication to the vehicle's already captivating presence.

As you slide into the cabin, you're greeted by the sumptuous comfort of black leatherette seats, a testament to Mercedes-Benz's commitment to luxury and craftsmanship. The interior is not just about comfort; it's a tech-lover's paradise, with an 8-inch infotainment screen serving as your command center. Here, connectivity is at your fingertips with features like Bluetooth wireless data link, hands-free phone capabilities, and smart device app functions to keep track of your vehicle's maintenance status.

Under the hood, the GLA 250's prowess is undeniable. Powered by a vigorous 2.0L Turbo I4 engine, boasting 208 horsepower and 258 ft-lbs of torque, this vehicle is ready to surge forward with a responsiveness that will leave you breathless. Coupled with a 7-Speed Double Clutch transmission, you'll experience seamless shifts and an exhilarating ride that's both smooth and efficient.

Music aficionados will revel in the auditory bliss provided by the 8-speaker audio system, complete with a Radio Data System and MP3 Playback capabilities. Speed-sensitive volume control ensures your soundtrack is always at the perfect level, enhancing every moment behind the wheel.

For those who demand the utmost in navigation and communication, the GLA 250 doesn't disappoint. Real-time traffic data ensures you're always on the most efficient path, while mbrace satellite communications keep you connected to a world of convenience and security.

The accolades speak volumes, with this model being recognized by J.D. Power and Associates for its Initial Quality Study (IQS) and Vehicle Dependability Study (VDS), ranking at the top of its class. Furthermore, the honor of Kelley Blue Book's Brand Image Awards for the Most Refined Luxury Brand solidifies the GLA 250's position as a paragon of automotive excellence.

This 2018 Mercedes-Benz GLA 250 isn't just a vehicle; it's a statement—a testament to your discerning taste and desire for a driving experience that transcends the ordinary. Don't merely take our word for it; come and witness the embodiment of luxury, performance, and innovation that awaits you. Your journey in the GLA 250 begins now, and it promises to be nothing short of extraordinary.

2018 Mercedes-Benz GLA 250 (SALE)

Autosource Hawaii - (808) 597-8522 - View this car on our website at autosourcehawaii.com/7246723/ebrochure

Vehicle History Report : as Of 07/27/2024



Snapshot

2018 MERCEDES-BENZ GLA 250



No accidents or damage reported to CARFAX



13 Service history records



34 Detailed records available



48,808 Last reported odometer reading



FREE CARFAX Report

See the full CARFAX Report for additional information

*carfax Snapshot is a reflection of available information on the date the report was pulled. carfax is constantly being updated with new information and is subject to change at any time.

Our Location :



2018 Mercedes-Benz GLA 250 (SALE)

Autosource Hawaii - (808) 597-8522 - View this car on our website at autosourcehawaii.com/7246723/ebrochure

Installed Options

Interior

- Air filtration: active charcoal- Front air conditioning: automatic climate control
- Front air conditioning zones: dual- Rear vents: second row
- Armrests: rear center folding with pass-thru- Floor mat material: carpet- Floor mats: front
- Steering wheel trim: leather- Ambient lighting- Cargo area light- Cargo cover: hard
- Cruise control- Footwell lights- Memorized settings: 3 driver
- Multi-function remote: keyless entry- Power outlet(s): 12V front
- Power steering: variable/speed-proportional- Push-button start- Remote engine start
- Steering wheel: tilt and telescopic- Touch-sensitive controls- Clock- Compass
- Digital odometer- External temperature display- Multi-function display- Trip odometer
- Driver seat power adjustments: 14- Front seat type: bucket- Rear seat folding: split
- Rear seat type: 60/40 split bench - Upholstery: leatherette

Exterior

- Exhaust: dual tip- Front bumper color: body-color- Mirror color: body-color
- Rear spoiler: roofline- Daytime running lights: LED- Exterior entry lights: approach lamps
- Front fog lights- Taillights: LED- Side mirrors: heated- Roof rails: chrome- Run flat tires
- Tire Pressure Monitoring System- Wheels: aluminum alloy- Front wipers: rain sensing
- Power windows: safety reverse- Rear privacy glass- Rear wiper: auto-on in reverse
- Window defogger: rear

Autosource Hawaii

autosourcehawaii.com

(808) 597-8522

1488 Kapiolani Blvd

Honolulu, HI 96814

© 2024 AutoRevo - All rights reserved. - Powered by AutoRevo