

## 2022 Tesla Model 3 Standard Rang Plus

View this car on our website at [autosourcehawaii.com/7246690/ebrochure](https://autosourcehawaii.com/7246690/ebrochure)

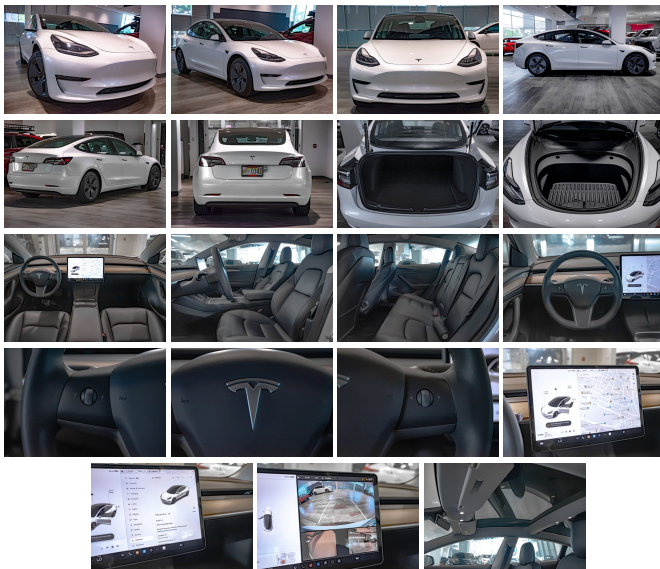


Our Price **\$39,995**

Retail Value **\$44,995**

### Specifications:

<b>Year:</b>	2022
<b>VIN:</b>	5YJ3E1EA2NF111910
<b>Make:</b>	Tesla
<b>Stock:</b>	NF111910
<b>Model/Trim:</b>	Model 3 Standard Rang Plus
<b>Condition:</b>	Pre-Owned
<b>Body:</b>	Sedan
<b>Exterior:</b>	Black
<b>Engine:</b>	Electric 201hp 258ft. lbs.
<b>Interior:</b>	Black Leather
<b>Transmission:</b>	1-Speed Direct-Drive Automatic
<b>Mileage:</b>	20,498
<b>Drivetrain:</b>	Rear Wheel Drive
<b>Economy:</b>	City 138 / Highway 126



Step into the future of driving with the sleek and sophisticated 2022 Tesla Model 3 Base—a vehicle that defines elegance and innovation. Cloaked in a timeless black exterior, this car is a rolling embodiment of style and class. The allure of the black leatherette interior beckons you to indulge in a cabin where luxury and technology converge, providing an ambiance that's both serene and cutting-edge.

At the heart of this automotive marvel lies the potent electric engine, delivering a robust 201hp and 258ft. lbs. of torque. This powertrain is not just about performance, it's about the seamless, whisper-quiet acceleration that can only be experienced in a Tesla. The 1-Speed Direct-Drive Automatic transmission ensures that power delivery is instantaneous and smooth, offering a driving experience that is both exhilarating and effortless.

Embrace the future with an array of manufacturer options and packages that place this Tesla Model 3 in a league of its own. The body-color mirror and front bumper color create a cohesive aesthetic that's both bold and refined. Stay connected and in control with the Wireless data link: Bluetooth, and Wi-Fi hotspot compatibility, ensuring you're never out of reach from what matters to you.

The Tesla App compatibility transforms your smartphone into a command center for your Model 3. Monitor your vehicle with the smart device app function: camera system display, and enjoy the convenience of voice-operated electronic messaging assistance. The touch screen navigation system with real-time traffic data ensures that you're always on the most efficient route, while the 15-inch infotainment screen is a window into a world of entertainment and information.

Sound is just as important as sight, and with 200 watts powering 7 speakers, the audio experience is as immersive as it is crisp. Tune into your favorite stations with the Radio data system, or stream from an array of internet radio apps like Slacker for an endless soundtrack to your journey.

The accolades speak for themselves. Awarded Kelley Blue Book's Brand Image Awards for Best Overall Luxury Brand, Best Value Luxury Brand, and Most Refined Luxury Brand, the Tesla Model 3 doesn't just meet expectations—it shatters them. And with Kelley Blue Book's 5-Year Cost to Own Award for Best Luxury Electric Vehicle, you can indulge in the opulence of this car with the assurance of its long-term value.

Driving a Tesla is more than just owning a car—it's a statement. It's a commitment to sustainability without sacrificing luxury or performance. The 2022 Tesla Model 3 Base is not just a vehicle, it's a vessel that transports you to a new era of automotive excellence. Don't just take the next step—leap into the future. Secure your piece of automotive history today, and experience the thrill of driving a Tesla. Your journey towards electrifying performance and unparalleled sophistication begins here.

2022 Tesla Model 3 Standard Rang Plus

Autosource Hawaii - (808) 597-8522 - View this car on our website at [autosourcehawaii.com/7246690/ebrochure](https://autosourcehawaii.com/7246690/ebrochure)

#### Vehicle History Report : as Of 05/09/2024



#### Snapshot

#### 2022 TESLA MODEL 3



No accidents or damage reported to CARFAX



2 Previous owners



Personal vehicle



Last owned in Hawaii



5 Detailed records available



16,832 Last reported odometer reading



**FREE CARFAX Report**

See the full CARFAX Report for additional information

\*carfax Snapshot is a reflection of available information on the date the report was pulled. carfax is constantly being updated with new information and is subject to change at any time.

#### Our Location :



## Installed Options

### Interior

- Air filtration- Front air conditioning: automatic climate control
- Front air conditioning zones: dual- Rear vents: second row
- Center console trim: leatherette- Door trim: faux suede- Heated steering wheel
- Steering wheel trim: leatherette- Adaptive cruise control
- Adaptive stop and go cruise control: fully automated- Ambient lighting- Cargo area light
- Cargo cover: hard- Easy entry: power driver seat- Memorized settings: 10 driver
- Multi-function remote: proximity entry system- Power outlet(s): 12V front
- Power steering: variable/speed-proportional- Rearview mirror: auto-dimming
- Steering wheel: power tilt and telescopic
- Universal remote transmitter: Homelink - garage door opener
- Wireless charging station: front- Clock- Compass- Digital odometer
- External temperature display- Multi-function display- Trip odometer- Driver seat: heated
- Driver seat power adjustments: 12- Front seat type: bucket- Passenger seat: heated
- Passenger seat power adjustments: 12- Rear seat: heated- Rear seat folding: split
- Rear seat type: 60-40 split bench - Upholstery: leatherette

---

### Exterior

- Front bumper color: body-color- Mirror color: body-color- Rear spoiler: lip
- Rear trunk/liftgate: power operated- Daytime running lights: LED
- Exterior entry lights: approach lamps- Front fog lights: LED- Taillights: LED
- Side mirror adjustments: power- Side mirrors: auto-dimming
- Moonroof / Sunroof: panoramic- Tire Pressure Monitoring System
- Wheels: aluminum alloy- Front wipers: rain sensing- Tinted glass
- Window defogger: rear