

2015 Toyota RAV4 XLE

View this car on our website at stellarautoinc.com/7245330/ebrochure

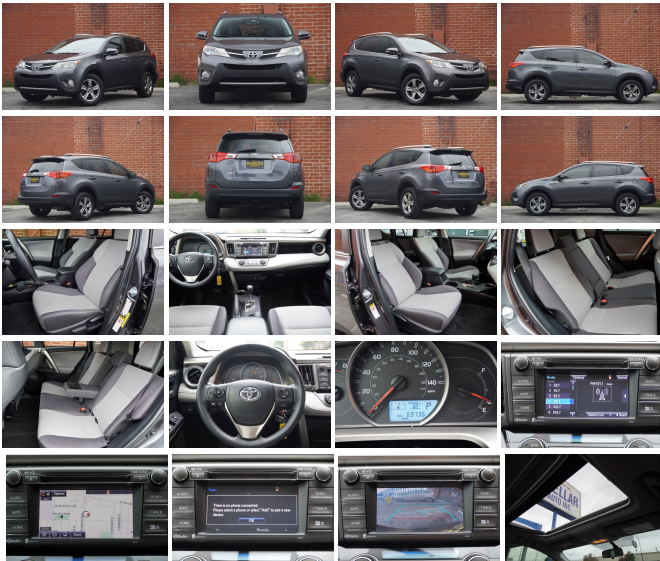


Our Price **\$14,990**

Specifications:

Year:	2015
VIN:	JTMWFREV4FJ052901
Make:	Toyota
Stock:	t2015rav4xle
Model/Trim:	RAV4 XLE
Condition:	Pre-Owned
Body:	SUV
Exterior:	[1G3] Magnetic Gray Metallic
Engine:	2.5L I4 176hp 172ft. lbs.
Interior:	Ash Cloth
Transmission:	6-Speed Shiftable Automatic
Mileage:	69,736
Drivetrain:	Front Wheel Drive
Economy:	City 24 / Highway 31

PLEASE NOTE: BY APPOINTMENT ONLY!



***PLEASE READ DESCRIPTION

***California DMV has issued a TMU title when the vehicle was registered in 2021 due to, what appears to be, a clerical error. No actual mileage discrepancies appear on the Carfax. Due to the record, we must sell the vehicle as True Miles Unknown. The vehicle has been priced accordingly

***2015 Toyota Rav4, with beautiful Magnetic Gray exterior (1G3) on Ash interior (FA10)

***XLE model

***Navigation, blue tooth, back-up camera, moon roof, power liftgate, alloy wheels

TRADE-INS ARE WELCOMENATIONWIDE SHIPPING AT WHOLESALE RATES***FINANCING AVAILABLE***WE OFFER EXTENDED WARRANTIES***OUR PRICES ARE NO-HAGGLE

Our Location :



2015 Toyota RAV4 XLE

Stellar Auto INC. - (818) 809-8676 - View this car on our website at stellarautoinc.com/7245330/ebrochure

Installed Options

Interior

- Air filtration- Front air conditioning: automatic climate control
- Front air conditioning zones: dual- Rear vents: second row- Cargo area light
- Cargo cover- Cruise control- Multi-function remote: keyless entry
- Power outlet(s): two 12V front- Power steering- Steering wheel: tilt and telescopic- Clock
- Digital odometer- External temperature display- Multi-function display- Trip odometer
- Front seat type: bucket- Rear seat folding: flat- Rear seat type: 60-40 split bench
- Upholstery: cloth

Exterior

- Front bumper color: body-color- Mirror color: body-color- Rear spoiler: roofline
- Daytime running lights- Exterior entry lights: approach lamps- Front fog lights
- Side mirrors: heated- Moonroof / Sunroof: power glass- Roof rails: black
- Spare wheel type: steel- Tire Pressure Monitoring System- Wheels: aluminum alloy
- Front wipers: variable intermittent- Laminated glass: acoustic
- Power windows: safety reverse- Rear privacy glass- Rear wiper: intermittent
- Solar-tinted glass- Window defogger: rear

Option Packages

Factory Installed Packages

Display Audio w/ Navigation and Entune

Includes 6.1 In. touch-screen w/ integrated backup camera display, AM/FM CD player w/ MP3/WMA playback capability, 6 speakers in 6 locations, SiriusXM satellite radio capability (includes three-month trial subscription to XM Select Package), HD radio w/ iTunes tagging, auxiliary audio jack, USB port w/ iPod connectivity and control, vehicle information, hands-free phone capability, phone book access, advanced voice recognition, text-to-speech w/ programmed and customizable text responses and music streaming via Bluetooth wireless technology.

\$585

Option Packages Total

\$585

Stellar Auto INC.

stellarautoinc.com

(818) 809-8676

2220 N Hollywood Way

Burbank, CA 91505

© 2024 AutoRevo - All rights reserved. - Powered by AutoRevo