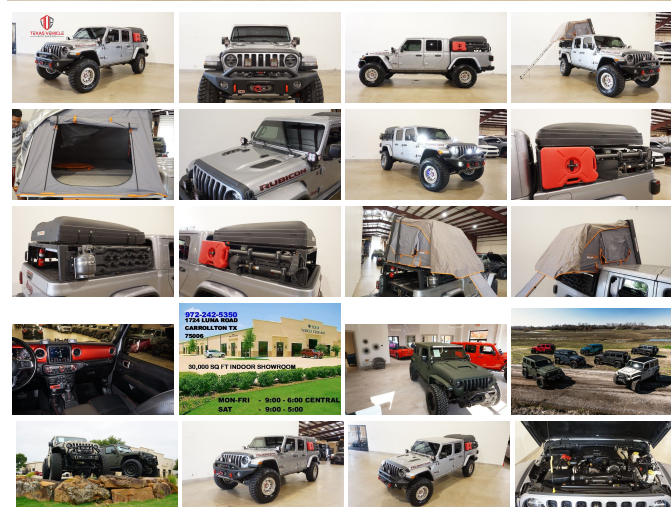


2021 Jeep Gladiator Rubicon 4X4 LIFTED,BUMPERS,LED'S,NAV,HTD LTH,TENT

View this car on our website at tveauto.com/7245321/ebrochure



Our Price **\$56,900**

Specifications:

Year:	2021
VIN:	1C6JJTBGXML507206
Make:	Jeep
Stock:	507206
Model/Trim:	Gladiator Rubicon 4X4 LIFTED,BUMPERS,LED'S,NAV,HTD LTH,TENT
Condition:	Pre-Owned
Body:	Pickup Truck
Exterior:	[PSC] Billet Silver Metallic Clear Coat
Engine:	3.6L V6 285hp 260ft. lbs.
Interior:	Black Leather
Transmission:	8-Speed Shiftable Automatic
Mileage:	30,988
Drivetrain:	4 Wheel Drive
Economy:	City 16 / Highway 23

NATION WIDE FINANCING

SUBMIT CREDIT APP [WWW.TVEAUTO.COM](https://www.tveauto.com)

OR CALL 972-242-5350

**"BILLET SILVER METALLIC CLEAR COAT
EDITION"**

CUSTOM BUILT 2021 JEEP GLADIATOR
RUBICON 4X4 WITH 24R PACKAGE

UPGRADES INCLUDE:

UPGRADES INCLUDE:

- * BILLET SILVER METALLIC CLEAR COAT
- * PAINTED TO MATCH 3 PIECE HARD TOP
- * HARDTOP HEADLINER
- * FACTORY BLACK LEATHER
- * FACTORY REMOTE START
- * REMOTE PROXIMITY KEYLESS ENTRY
- * COLD WEATHER GROUP
- * LED LIGHTING GROUP
- * ACTIVE SAFETY GROUP
- * ADAPTIVE CRUISE CONTROL/FWD COLLISION WARNING PLUS
- * TRAILER TOW PACKAGE
- * FORWARD FACING TRAIL CAM
- * FACTORY 8.4 INCH TOUCH SCREEN NAVIGATION WITH HD AM/FM/SIRIUS STEREO & ALPINE PREMIUM AUDIO SYSTEM
- * FACTORY BACK-UP CAMERA
- * U-CONNECT
- * ARB BONDI DELUXE FRONT BUMPER WITH LED FOGLIGHTS & 2 SQUARE KC LED LIGHTS
- * WARN WINCH WITH SYNTHETIC ROPE
- * FACTOR 55 ULTRA HOOK (RED)
- * FACTORY LED HEADLIGHTS
- * MOPAR 10TH ANNIVERSARY RUBICON POWER DOME HOOD
- * PAINTED TO MATCH FENDER FLARES
- * APPROX 4.0" SUSPENSION LIFT KIT WITH TERAFLX FALCON SERIES 3 SHOCKS & RESERVOIRS
- * FOX PERFORMANCE STEERING STABILIZER SHOCK
- * MOPAR AUXILIARY SWITCH BANK KIT

- ^ MOPAR AUXILIARY SWITCH BANK KIT
- * S-POD POWER DISTRIBUTIONS
- * 4 KC SQUARED LED PILLAR LIGHTS
- * REBEL OFF ROAD BED RACK WITH ROOF TOP ROOF NEST TENT
- * SEVERAL ACCESSORIES MOUNTED TO BED RACK
- * SPRAY IN BEDLINER
- * DECKED DRAWER SYSTEM
- * FACTORY REAR BUMPER WITH REAR PARK DISTANCE SENSORS
- * ALL WEATHER FLOOR MATS
- * 17" KMC BEADLOCK WHEELS
- * GOODYEAR WRANGLER MT/R WITH KEVLAR 37X12.50R/17 TIRES

WE BUILD EVERY JEEP WITH PRIDE! DO NOT HESITATE TO CALL US WITH THIS JEEP BUILD. WE CAN MAKE CHANGES TO THIS JEEP BUILD OR CUSTOM BUILD ANY JEEP TO YOUR PREFERENCE. GIVE US A CALL @ 972-242-5350 OR STOP BY FOR A TEST DRIVE. 1724 LUNA RD IN CARROLLTON - 2 MILES NORTH OF 635.

Vehicle History Report : as Of 05/08/2024

CARFAX

Snapshot

2021 JEEP GLADIATOR RUBICON



No accidents or damage reported to CARFAX



10 Service history records



CARFAX 1-Owner vehicle



Personal vehicle



Last owned in Texas



32,452 Last reported odometer reading



FREE CARFAX Report

See the full CARFAX Report for additional information

*carfax Snapshot is a reflection of available information on the date the report was pulled. carfax is constantly being updated with new information and is subject to change at any time.

Our Location :



2021 Jeep Gladiator Rubicon 4X4 LIFTED,BUMPERS,LED'S,NAV,HTD LTH,TENT

Texas Vehicle Exchange - 972-242-5350 - View this car on our website at veauto.com/7245321/ebrochure

Installed Options

Interior

- Air filtration- Front air conditioning: automatic climate control
- Front air conditioning zones: dual- Rear vents: second row- Floor mat material: carpet
- Floor mats: front- Steering wheel trim: leather- Ambient lighting- Cruise control
- Footwell lights- Multi-function remote: keyless entry- Power outlet(s): 115V front
- Power steering- Push-button start- Steering wheel: tilt and telescopic- Tool kit
- Universal remote transmitter: garage door opener- Clock- Compass
- Customizable instrument cluster- Digital odometer- External temperature display
- Instrument cluster screen size: 7 in.- Multi-function display- Trip odometer
- Front seat type: bucket- Rear seat folding: folds up- Rear seat type: 60-40 split bench
- Upholstery: premium cloth- Upholstery accents: contrast stitching

Exterior

- Pickup bed light- Tailgate: power locking- Daytime running lights
- Exterior entry lights: approach lamps- Front fog lights- Side mirrors: heated
- Removable roof: soft top- Spare wheel type: steel- Tire Pressure Monitoring System
- Wheels: painted aluminum alloy- Front wipers: variable intermittent
- Power windows: safety reverse- Rear privacy glass- Solar-tinted glass

Option Packages

Factory Installed Packages

Billet Silver Metallic Clear Coat Paint	\$245
Body Color 3-Piece Hard Top Includes 3-piece body-color hard top, freedom panel storage bag, rear window defroster, and rear sliding window.	\$2,545
Body Color Fender Flares	\$695
Hard Top Headliner	\$555
LED Lighting Group Includes LED daytime running lamps, LED fog	\$1,465

- Tinted glass: front driver and passenger

lamps, LED park turn lamps, LED reflector headlamps, and LED taillamps.	\$1,100
Spray In Bedliner	\$495
Leather-Trimmed Bucket Seats Includes leather-trimmed bucket seats, premium full-length floor console with armrest, leather-wrapped shift knob and parking brake handle, premium door trim panels, and rear armrest with cupholders.	\$1,725
Remote Proximity Keyless Entry Includes remote proximity keyless entry.	\$695
8.4-In. Radio and Premium Audio Group Includes UConnect 4C NAV with 8.4-in. touch-screen display, 4G Wi-Fi hotspot, SiriusXM Guardian, SiriusXM Travel Link, Alpine premium audio system, HD radio, GPS navigation, off-road information pages, and auto-dimming rearview mirror.	\$1,995
Advanced Safety Group Includes adaptive cruise control, full-speed forward collision warning plus, advanced brake assist, and automatic high beam headlamp control.	\$795
Auxiliary Switch Group Includes 240-amp alternator, 700-CCA maintenance-free battery, and auxiliary switches.	\$345
Cold Weather Group Includes heated front seats and leather-wrapped heated steering wheel.	\$695
Quick Order Package 24R Includes standard 3.6L engine, 8-speed automatic transmission, Selec-Speed control, tip start, and transmission skid plate.	
Safety Group Includes blind spot with cross path detection, LED taillamps, and ParkSense rear park assist.	\$995
Trailer Tow Package Includes 240-amp alternator, Class IV receiver hitch, heavy-duty engine cooling, and trailer hitch zoom.	\$545
Integrated Off-Road Camera	\$595
Option Packages Total	\$14,385