



## 2016 Land Rover Range Rover Evoque HSE Dynamic

Call 901-368-5505 for more information or to schedule a test drive. 901-368-5505

**Our Price \$24,995**

View this vehicle on our website at [mtmoriahautos.com](http://mtmoriahautos.com)

Mt. Moriah Auto Sales

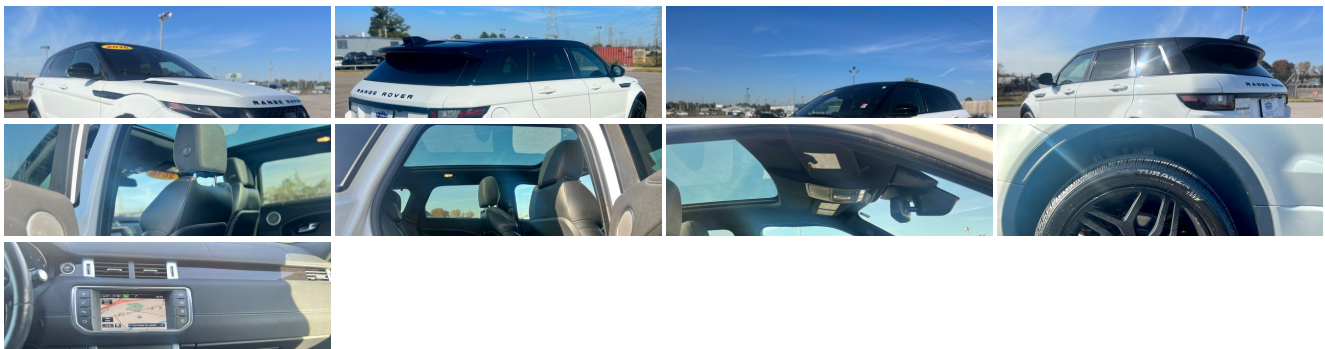
[901-368-5505](tel:901-368-5505)

2571 MT MORIAH RD, Memphis, TN 38115

[Photos](#)

[Details](#)

[Contact](#)



### Specifications:

<b>Year:</b>	2016
<b>VIN:</b>	SALVD2BG8GH145405

<b>Make:</b>	Land Rover
<b>Stock:</b>	H1092
<b>Model/Trim:</b>	Range Rover Evoque HSE Dynamic
<b>Condition:</b>	Pre-Owned
<b>Body:</b>	SUV
<b>Exterior:</b>	[1AA] Fuji White
<b>Engine:</b>	2.0L Turbo I4 240hp 250ft. lbs.
<b>Interior:</b>	Black Leather
<b>Transmission:</b>	9-Speed Shiftable Automatic
<b>Mileage:</b>	77,783
<b>Drivetrain:</b>	All Wheel Drive
<b>Economy:</b>	City 21 / Highway 30

## Vehicle Description

Call 901-368-5505 for details on this vehicle and to schedule a test drive. All of our vehicles have been safety inspected and serviced and are eligible for extended warranties, some vehicles are under factory warranty.

Email for details @ 2571mtmoriah@gmail.com

Call 901-368-5505 for details.

## Installed Options

### Interior

- Air filtration- Front air conditioning: automatic climate control
- Front air conditioning zones: dual- Rear vents: second row
- Center console trim: aluminum- Dash trim: leather- Door sill trim: illuminated scuff plate
- Door trim: leather- Floor mat material: carpet- Floor mats: front
- Foot pedal trim: aluminum- Interior accents: aluminum- Shift knob trim: aluminum
- Steering wheel trim: leather- Ambient lighting: color-adjustable- Cargo area light
- Cargo cover: hard- Cruise control- Easy entry: power driver seat- Footwell lights
- Memorized settings: 3 driver- Power outlet(s): 12V cargo area
- Power steering: variable/speed-proportional- Push-button start
- Rearview mirror: auto-dimming- Remote engine start- Steering wheel: tilt and telescopic
- Tool kit- Universal remote transmitter: Homelink - garage door opener - Clock
- Compass- Digital odometer- External temperature display- Multi-function display
- Trip odometer- Driver seat: heated- Driver seat power adjustments: 12
- Front seat type: bucket- Passenger seat: heated
- Passenger seat power adjustments: 12- Rear seat folding: split
- Rear seat type: 60-40 split bench - Upholstery: leather

### Exterior

- Exhaust: dual tip- Front bumper color: body-color- Rear spoiler: roofline
- Daytime running lights: LED- Exterior entry lights: approach lamps- Front fog lights
- Headlight cleaners- Rear fog lights- Taillights: LED- Side mirror adjustments: power
- Side mirrors: heated- Moonroof / Sunroof: panoramic- Spare wheel type: steel
- Tire Pressure Monitoring System- Wheels: aluminum alloy- Front wipers: rain sensing
- Rear privacy glass- Rear wiper: auto-on in reverse- Solar-tinted glass
- Window defogger: rear

\*Price does not include taxes, tags, title, license, registration, documentation fee of \$698.00 or other delivery charges.

Mt. Moriah Auto Sales

Mt. Moriah Auto Sales

View this car on our website at [mtmoriahautos.com/7243464](http://mtmoriahautos.com/7243464)

Website: [mtmoriahautos.com](http://mtmoriahautos.com)

Phone: 901-368-5505

Map: 2571 MT MORIAH RD, Memphis, TN 38115

