

2013 BMW X1 xDrive35i Local 2 Owner Over \$5500 Just Spent in Mechanical

View this car on our website at caseattle.com/7243008/ebrochure

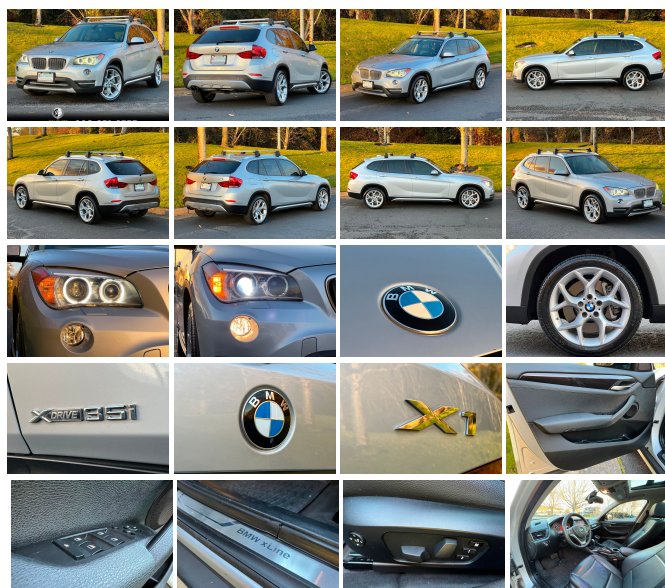


Our Price **\$10,995**

MSRP **\$49,445**

Specifications:

Year:	2013
VIN:	WBAVM5C5XDVV89269
Make:	BMW
Stock:	11779
Model/Trim:	X1 xDrive35i Local 2 Owner Over \$5500 Just Spent in Mechanical
Condition:	Pre-Owned
Body:	SUV
Exterior:	[A83] Glacier Silver Metallic
Engine:	3.0L Turbocharged I-6 300hp 300ft. lbs.
Interior:	Black Leather
Transmission:	6-Speed Steptronic Automatic with Sport and Manual Shift and ATC
Mileage:	127,370
Drivetrain:	All Wheel Drive
Economy:	City 18 / Highway 27



LOCAL TWO OWNER WITH OVER 24 SERVICE HISTORY RECORDS! ALL WHEEL DRIVE! LUXURY! PERFORMANCE! HANDLING! STYLE! COMFORT! SAFETY! AND 27 MILES PER GALLON! Glacier silver metallic exterior with black nevada leather interior with gray/brown accent piping. 300hp 3.0L Turbocharged 6-cylinder engine, 6-speed steptronic automatic transmission, xDrive all wheel drive system. Two owner with full history, non smoker, always garaged. Leased new at BMW Seattle on 11/09/2012 as a 2 year lease. Turned back into BMW Seattle and sold to the second owner as a Certified Pre-Owned (CPO) on 11/08/2014 with just 13,089 miles. Excellent and religious service history at BMW Seattle with over 24 service history records on the Carfax report. xLine package, technology package, premium package, cold weather package, lighting package, dual 8-way power heated front seats with lumbar and driver memory, tilt/telescopic heated multi-function sport leather wrapped steering wheel with paddle shifters, dark copper high gloss trim, auto dimming interior and exterior mirrors, iDrive infotainment and navigation system, Hi-Fi sound system, CD, iPod & USB adapter, BMW assist with bluetooth, voice command, satellite radio prep, real time traffic information (RTTI), ambient lighting, dynamic cruise control, power tilt/slide panoramic moonroof with power sunshade, universal garage door opener, dual zone automatic climate control, satin aluminum roof rails, roof rack cross bars, anti-theft alarm system, anti-lock brake system (ABS), dynamic traction control (DTC), air pressure monitoring

system (ABS), dynamic traction control (DTC), tire pressure monitoring, eco pro mode, keyless entry, keyless start, comfort access, rear defroster, rain-sensing automatic wipers, automatic adaptive xenon headlamps with high beam assistant and washers, fog lamps, LED daytime running lamps, 18" star spoke alloy wheels just refinished, with LIKE NEW ALL SEASON TIRES! Just had a buyer's inspection performed and had major service totaling over \$5,500 including the following; new eccentric shaft and eccentric shaft motor, DME update, new valve cover assembly, new starter, new oil pan gasket, new oil level sensor, new door lock actuator, power steering fluid flush, oil and filter change, engine air filter, wiper blades, and more. The following items were recently serviced by the previous owner; front lower control arms, all season tires, front brake pads and rotors. LOOKS AND DRIVES LIKE IT HAS 60,000 MILES. YOU MUST SEE AND DRIVE THIS X1 TO APPRECIATE EVERYTHING IT HAS TO OFFER. DON'T BE FOOLED BY OTHER X1'S IN THE AREA WITH LITTLE-TO-NO SERVICE HISTORY. SAVE YOURSELF THOUSANDS DOWN THE ROAD IN FUTURE REPAIRS. THIS X1 HAS IT ALL! Sold new for \$49,445. Why buy new? Save over \$37,945 and buy quality and value!

Since 1983, Complete Automotive has been the premier pre-owned luxury car dealership in the greater Seattle area.

Voted Best Service Department by Seattle Magazine, "we service what we sell".

We specialize in service and sales of Audi, BMW, Jaguar, Land Rover, Mercedes-Benz, MINI, Porsche, and classic automobiles.

In addition, we accept all trades. We also have various financing options available to our customers.

Our cars are shown by appointment only. The best and quickest way to reach us is to call direct at 206-322-5247. We will cater to your schedule.

Vehicle History Report : as Of 05/09/2024

CARFAX

Snapshot

2013 BMW X1 XDRIVE35I



No accidents or damage reported to CARFAX



26 Service history records



2 Previous owners



Types of owners: Personal lease
Personal



Last owned in Washington



127,317 Last reported odometer reading



FREE CARFAX Report

See the full CARFAX Report for additional information

*carfax Snapshot is a reflection of available information on the date the report was pulled. carfax is constantly being updated with new information and is subject to change at any time.

Our Location :



2013 BMW X1 xDrive35i Local 2 Owner Over \$5500 Just Spent in Mechanical
Complete Automotive - 206-322-5247 - View this car on our website at caseattle.com/7243008/ebrochure

Installed Options

Interior

- Air filtration: active charcoal- Front air conditioning: automatic climate control
- Front air conditioning zones: dual- Rear vents: second row- Center console trim: wood
- Dash trim: wood- Door trim: wood- Floor mat material: carpet- Floor mats: front
- Interior accents: wood-tone- Shift knob trim: alloy- Steering wheel trim: leather
- Cargo area light- Cruise control- Memorized settings: 2 driver
- Multi-function remote: keyless entry- Power outlet(s): 12V cargo area
- Power steering: variable/speed-proportional- Push-button start
- Steering wheel: tilt and telescopic- Clock- Digital odometer- External temperature display
- Multi-function display- Trip odometer- Driver seat power adjustments: 8
- Front seat type: bucket- Passenger seat power adjustments: 8- Rear seat folding: split
- Rear seat type: 40-20-40 split bench- Upholstery: leatherette

Exterior

- Exhaust: dual tip- Front bumper color: body-color- Mirror color: body-color
- Rear spoiler: roofline- Daytime running lights- Front fog lights- Taillights: adaptive
- Moonroof / Sunroof: power- Roof rails: black- Run flat tires
- Tire Pressure Monitoring System- Wheels: aluminum alloy- Front wipers: rain sensing
- Power windows: safety reverse- Rear privacy glass- Rear wiper: intermittent
- Window defogger: rear

Option Packages

Factory Installed Packages

Glacier Silver Metallic Paint	\$550
-------------------------------	-------

Cold Weather Package	\$550
Includes heated steering wheel and heated front seats.	

Lighting Package	\$450
Includes ambiance lighting and automatic high beams.	

Premium Package	\$2,150
Includes universal garage door opener, comfort access keyless entry, auto-dimming interior and exterior mirrors, auto-dimming rearview mirror, lumbar support, interior mirror with compass and Nevada leather seats.	

Technology Package	\$2,500
Includes navigation system, voice command, and BMW Assist with Bluetooth.	

xLine	\$1,900
Includes 18 in. light alloy wheels, dark copper high-gloss trim or fine line bay matt wood trim, and black leatherette or beige leatherette or Oyster Nevada leather or Black Nevada leather or Terra Nevada leather.	

Option Packages Total	\$8,100
-----------------------	---------

The price for this vehicle as equipped does not include charges such as: License, Title, Registration Fees, State or Local Taxes, Finance Charges, Credit Investigation, Optional Credit Insurance, Physical Damage of Liability Insurance, or Delivery Fees. A documentary service fee of up to \$200 may be charged or added to the cost of the vehicle. Complete Automotive makes no representations, expressed or implied, to any actual or prospective purchaser or owner of this vehicle as to the existence, ownership, accuracy, description or condition of this vehicles listed equipment, accessories, price or any warranties. Any and all differences must be addressed prior to the sale of this vehicle.