

# 2015 Honda Civic Si

View this car on our website at [dallasdrive.net/7242291/ebrochure](http://dallasdrive.net/7242291/ebrochure)



Price **\$19,247**

## Specifications:

<b>Year:</b>	2015
<b>VIN:</b>	2HGFB6E55FH704664
<b>Make:</b>	Honda
<b>Stock:</b>	704664
<b>Model/Trim:</b>	Civic Si
<b>Condition:</b>	Pre-Owned
<b>Body:</b>	Sedan
<b>Exterior:</b>	Modern Steel Metallic
<b>Engine:</b>	2.4L I4 205hp 174ft. lbs.
<b>Interior:</b>	Black Cloth
<b>Transmission:</b>	6-Speed Manual
<b>Mileage:</b>	82,495
<b>Drivetrain:</b>	Front Wheel Drive
<b>Economy:</b>	City 22 / Highway 31

Odometer is 13036 miles below market average!

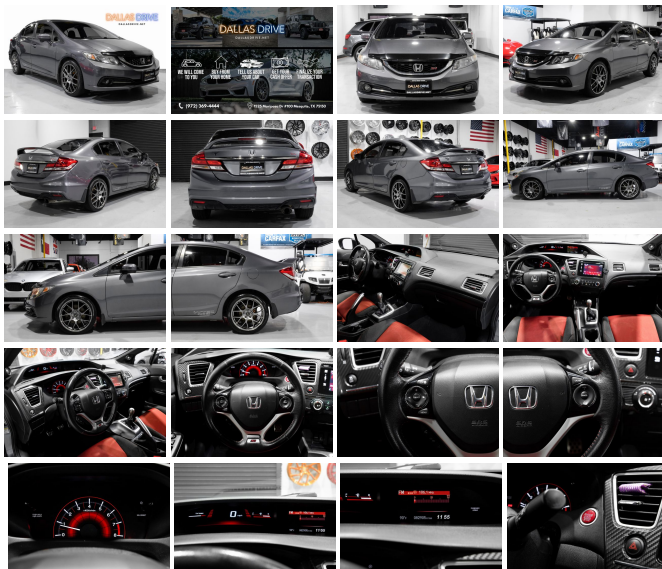
18" Alloy Wheels, 4-Wheel Disc Brakes, 7 Speakers, ABS brakes, Air Conditioning, Alloy wheels, Brake assist, Bumpers: body-color, CD player, Cloth Seat Trim, Delay-off headlights, Driver door bin, Driver vanity mirror, Dual front impact airbags, Dual front side impact airbags, Electronic Stability Control, Exterior Parking Camera Rear, Four wheel independent suspension, Front anti-roll bar, Front Bucket Seats, Front Center Armrest, Front fog lights, Front reading lights, Fully automatic headlights, Illuminated entry, Leather Shift Knob, Low tire pressure warning, Occupant sensing airbag, Outside temperature display, Overhead airbag, Panic alarm, Passenger door bin, Passenger vanity mirror, Power door mirrors, Power moonroof, Power steering, Power windows, Radio data system, Rear anti-roll bar, Rear seat center armrest, Rear window defroster, Reclining Front Bucket Seats, Remote keyless entry, Security system, Speed control, Speed-sensing steering, Split folding rear seat, Spoiler, Steering wheel mounted audio controls, Tachometer, Telescoping steering wheel, Tilt steering wheel, Traction control, Trip computer, and Variably intermittent wipers. 2015 Honda Civic Si FWD Close-Ratio 6-Speed Manual 2.4L I4 DOHC 16V i-VTEC Gray

22/31 City/Highway MPG

### Awards:

\* 2015 KBB.com Brand Image Awards

Kelley Blue Book Brand Image Awards are based on the Brand Watch(tm) study from Kelley Blue Book Market Intelligence. Award calculated among non-luxury shoppers. For more information, visit [www.kbb.com](http://www.kbb.com). Kelley Blue Book is a registered trademark of Kelley Blue Book.



Reviews:

\* \* Our highest-rated compact car and Compact Car Best Buy for 2015 \*  
Choice of sedan or coupe, plus sporty Si models \* Choice of gasoline,  
hybrid and natural gas powertrains \* Reliable, efficient and economical \*  
Easy and spunky driving manners Source: KBB.com

\* The Honda Civic is back to rest the critics of the past. Whichever Civic you choose, you'll find the technology and refinement to make the journey more exciting than the destination. A new front grille and headlights adorn the front end, while new taillights help you stand out from behind. Add to that its wheel options and you've got the sleekest Civic yet. The 1.8L i-VTEC engine uses state of the art engineering technology to produce an impressive 143hp, yet it still receives excellent fuel-efficiency ratings and a Partial Zero-Emission Vehicle rating, all on regular gasoline. The continuously variable transmission allows the engine to always operate at the most efficient rpm level, enabling maximum efficiency under all driving conditions. There is also a Hybrid available with 44city/47 hwy MPG ratings as well as the performance minded Si with a 205hp engine. Interior features include an impressive array of available tech features including an available 7-inch display audio with a touch-screen interface; the Honda LaneWatch system which activates a tiny camera on the passenger side mirror when you signal to change lanes to cover more view than the passenger-side mirror; HondaLink's Aha app allows you to access news, social media, restaurant searches, internet radio, and more; a rearview camera is available with up to 3 available angles to view; Satellite navigation is also available with voice recognition software. The Advanced Compatibility Engineering II body design utilizes a network of connected structural elements to distribute crash energy more evenly throughout the front of the vehicle and more evenly disperse the forces transferred to other vehicles in a crash. Source: The Manufacturer Summary

\* Comfortable and composed ride; good fuel economy; spacious interior; wide variety of engines available; available coupe body style. Source: Edmunds

---

2015 Honda Civic Si

Texas Auto Direct - (972) 369-4444 - View this car on our website at [dallasdrive.net/7242291/ebrochure](http://dallasdrive.net/7242291/ebrochure)

## Our Location :



2015 Honda Civic Si

Texas Auto Direct - (972) 369-4444 - View this car on our website at [dallasdrive.net/7242291/ebrochure](http://dallasdrive.net/7242291/ebrochure)

## Installed Options

### Interior

- Air filtration- Front air conditioning- Rear vents: second row
- Armrests: rear center folding with storage- Floor mat material: carpet- Floor mats: front
- Foot pedal trim: aluminum- Shift knob trim: alloy- Steering wheel trim: leather
- Cargo area light- Cruise control- Multi-function remote: proximity entry system
- Power outlet(s): 12V front- Power steering- Push-button start
- Steering wheel: tilt and telescopic- Clock- Digital odometer- External temperature display
- Multi-function display- Trip odometer- Driver seat manual adjustments
- Front seat type: bucket- Passenger seat manual adjustments- Rear seat folding: split
- Rear seat type: 60-40 split bench - Upholstery: cloth

### Exterior

- Front bumper color: body-color- Mirror color: body-color- Rear spoiler
- Daytime running lights- Front fog lights- Spare wheel type: steel
- Tire Pressure Monitoring System- Wheels: aluminum alloy
- Front wipers: variable intermittent- Power windows- Window defogger: rear

Texas Auto Direct

[dallasdrive.net](http://dallasdrive.net)

(972) 369-4444

1525 Mariposa Drive

Mesquite, TX 75150

© 2023 AutoRevo - All rights reserved. - Powered by AutoRevo

