



## 2023 Toyota Sequoia Platinum CUSTOM LIFTED ICON SUSP SCS WHEELS BAJA L

**Our Price \$98,990**

**Retail Value \$102,990**

View this vehicle on our website at [extremesportscars.com](https://extremesportscars.com)



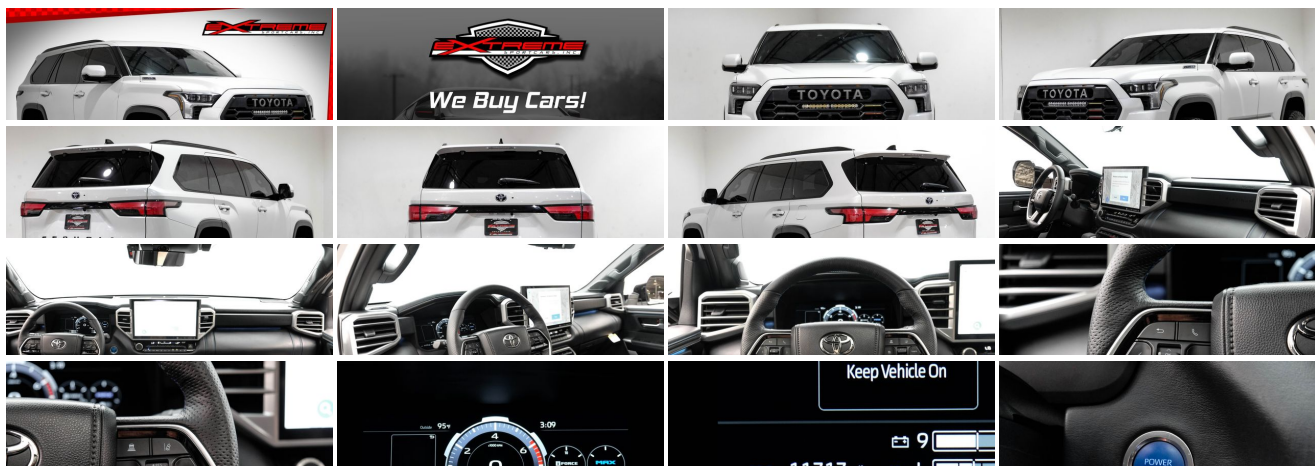
**469-381-7040**

15001 E Beltwood Parkway, Addison, TX 75001

Photos

Details

Contact





Specifications:

Year:	2023
VIN:	7SVAAABA4PX006307
Make:	Toyota
Model/Trim:	Sequoia Platinum CUSTOM LIFTED ICON SUSP SCS WHEELS BAJA L
Condition:	Pre-Owned
Body:	SUV
Exterior:	[089] Wind Chill Pearl
Engine:	3.4L Hybrid Twin Turbo V6 437hp 583ft. lbs.
Interior:	Black
Transmission:	10-Speed Shiftable Automatic
Mileage:	11,712
Drivetrain:	4 Wheel Drive
Economy:	City 19 / Highway 22

Vehicle Description

This 2023 TOYOTA SEQUOIA PLATINUM CUSTOM LIFTED (OWNER PERSONAL USE)

ICON SUSPENSION STAGE 9 SYSTEM TUBULAR

ICON SUSPENSION DIFFERENCIAL DROP KIT

REAR 3" DUAL RATE REAR SPRING KIT

FABTECH REAR LOWER LINK KIT

17X8.5 STEALTH CUSTOM SERIES SR8 WHEELS TRD CENTER CAP

BAJA DESIGNS Toyota S8 20 Inch LED BAR Grille Light Kit - w/ TRD Grill

37X12.5R17 BF GOODRICH KO2 A/T LESS 1000 MILES

BAJA DESIGNS S2 SPORT OEM FOG LIGHT REPLACEMENT KIT

TRD PRO ALL WEATHER FLOOR MATTS

K&N AIR FILTER

WINDOW TINT

2023 TOYOTA Sequoia PLATINUM CUSTOM LIFTED

WIND CHILL PEARL Exterior

Black W/BUE STICH Interior LEATHER

Special Color \$425

Automatic Power Extending Running Boards \$1,005

[HU] Head Up Display (Hud), 10-inch color display w/speedometer, navigation and hybrid system indicator \$600

Carpet Floor Mats/Carpet Cargo Mat (TMS) \$358

Connectivity Kit \$75

Integrated Dash Cam \$499

Vehicle Protection Premium Package \$599

[SEQUOIA DEALERINTALLED] Sequoia Dealer Installed \$799

Panoramic Sunroof

Park Assist

Navigation

Backup Camera

Push to Start

Heated/Cooled Seats

Heated Steering Wheel

Steering Wheel Controls

Bluetooth Technology

Hands-Free Communication

Dual Climate Control

Satellite Radio

AM/FM Radio

Power Memory Seats

Power Windows/Locks

Power Mirrors

Cruise Control

Traction Control

External Temperature

Compass

Keyless Entry

Automatic Transmission

3.4L Hybrid Twin Turbo V6 437hp 583ft. Lbs. Engine

Well Maintained

Very Clean!

Professionally Detailed

And Much More!!

Come see our indoor showroom in Dallas with 70+ carefully selected luxury and performance vehicles! Our inventory includes models from Lexus, BMW, Dodge, Toyota, and more. Our prices and selection can't be beaten! Every vehicle is hand-picked, thoroughly inspected for quality, and is lovingly detailed. From luxurious midsize sedans to sophisticated crossover SUVs, we have it all.

Extreme Sportcars Inc is located in Addison at 15001 E Beltwood Parkway. With a large variety of quality vehicles in stock, we are sure to find the car you need. If we don't have it in our inventory, use our vehicle finder service and we will locate it for you.

From Monday through Saturday, our friendly staff is ready to provide you with top-notch service. Browse our inventory, give us a call or come by and see us in person, so you can see how we make buying your next car easier!

## Installed Options

### Interior

- Air filtration- Front air conditioning: automatic climate control
- Front air conditioning zones: dual- Rear air conditioning: automatic climate control
- Rear vents: third row- Heated steering wheel- Shift knob trim: leather
- Steering wheel trim: leather- Adaptive cruise control
- Adaptive stop and go cruise control: semi-automatic- Ambient lighting
- Autonomous lane guidance: lane centering- Cargo area light- Cargo cover: hard
- Footwell lights- Memorized settings: 2 driver- Power outlet(s): 115V cargo area
- Power steering: variable/speed-proportional- Push-button start
- Rearview mirror: camera-based- Steering wheel: power tilt and telescopic
- Sunshade: side window- Universal remote transmitter: Homelink - garage door opener
- Wireless charging station: front- Clock- Compass- Customizable instrument cluster
- Digital odometer- External temperature display- Instrument cluster screen size: 12.3 in.
- Multi-function display- Trip odometer- Driver seat: heated
- Driver seat power adjustments: 10- Front seat type: bucket- Passenger seat: heated
- Passenger seat power adjustments: 10- Rear seat: heated- Rear seat folding: flat
- Rear seat type: captains chairs- Third row power adjustments
- Third row seat folding: flat- Third row seat type: 40-60 split bench
- Upholstery: leather-trimmed- Upholstery accents: contrast stitching

### Exterior

- Active grille shutters- Front bumper color: body-color- Mirror color: body-color
- Mudguards: front- Rear spoiler: roofline- Rear trunk/liftgate: power operated
- Running boards- Daytime running lights: LED- Front fog lights: LED- Taillights: LED
- Side mirror adjustments: power- Side mirrors: auto-dimming- Roof rails: black
- Spare wheel type: steel- Tire Pressure Monitoring System
- Wheels: painted aluminum alloy- Front wipers: rain sensing- Laminated glass: acoustic
- Liftgate window: manual flip-up- Power windows: safety reverse- Rear privacy glass
- Rear wiper: auto-on in reverse- Window defogger: rear

Extreme Sportcars Inc

Extreme Sportcars Inc

View this car on our website at [extremesportscars.com/7232261](https://extremesportscars.com/7232261)

Website: [extremesportscars.com](https://extremesportscars.com)

Phone: [469-381-7040](tel:469-381-7040)

Map: [15001 E Beltwood Parkway, Addison, TX 75001](#)

