

# 2021 Ford F250 Extended Cab 2wd with New 8' Knapheide Utility Bed

**Casey Graffius 717.431.8330**

View this car on our website at [jakobsenmotors.com/7230971/ebrochure](http://jakobsenmotors.com/7230971/ebrochure)

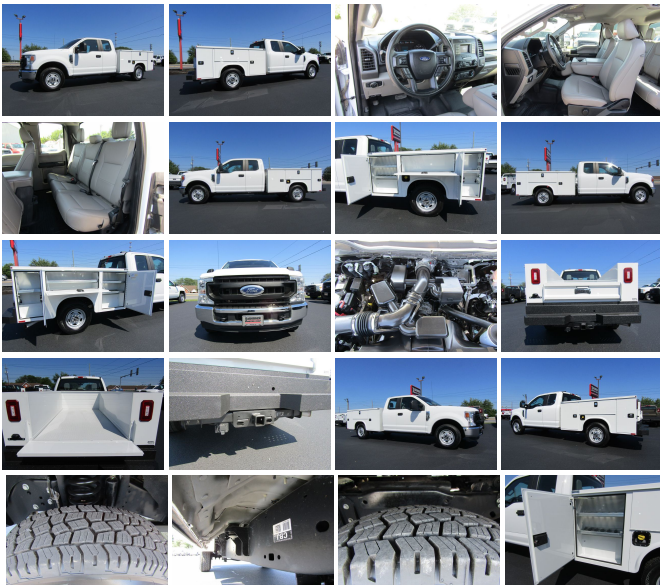


Our Price **\$45,950**

## Specifications:

<b>Year:</b>	2021
<b>VIN:</b>	1FT7X2A60MEC48167
<b>Make:</b>	Ford
<b>Stock:</b>	7171
<b>Model/Trim:</b>	F250 Extended Cab 2wd with New 8' Knapheide Utility Bed
<b>Condition:</b>	Pre-Owned
<b>Body:</b>	Pickup Truck
<b>Exterior:</b>	[Z1] Oxford White
<b>Engine:</b>	6.2L V8 385hp 430ft. lbs.
<b>Interior:</b>	Medium Earth Gray Vinyl
<b>Transmission:</b>	6-Speed Shifttable Automatic
<b>Mileage:</b>	72,489
<b>Drivetrain:</b>	Rear Wheel Drive

2021 Ford F250 Extended Cab 2wd with New 8' Knapheide Utility Bed with 72,000 miles. Comes with a 6.2L V8 Engine, Vinyl interior, Power windows and locks, Backup camera, Cruise, 10,000 GVW, Tow package with brake controller, 3.73 rear with limited slip, New tires, PA inspected and serviced. Call Casey for more information or to schedule a test drive. Visit us at our website at [www.jakobsenmotors.com](http://www.jakobsenmotors.com) for more info and photos.



**Our Location :**



2021 Ford F250 Extended Cab 2wd with New 8' Knapheide Utility Bed  
Jakobsen Motor Corp. - 717.431.8330 - View this car on our website at [jakobsenmotors.com/7230971/ebrochure](http://jakobsenmotors.com/7230971/ebrochure)

## Installed Options

### Interior

- Air filtration- Front air conditioning- Power outlet(s): 12V front- Power steering
- Steering wheel: tilt and telescopic- Clock- Digital odometer- External temperature display
- Powertrain hour meter- Front seat type: 40-20-40 split bench - Rear seat folding: folds up
- Rear seat type: 60-40 split bench

### Exterior

- Tailgate: lift assist- Pickup bed light- Towing mirrors- Spare wheel type: steel
- Tire Pressure Monitoring System- Wheels: painted steel
- Front wipers: variable intermittent- Solar-tinted glass: front

## Option Packages

### Factory Installed Packages

#### Vinyl 40/20/40 Split Bench Seat

Includes heavy duty vinyl 40/20/40 split bench front seat with center armrest, cupholder, storage, and manual driver lumbar adjustment.

#### Power Equipment Group

Includes accessory delay, power door locks, power tailgate lock, remote keyless entry, SecurILock passive anti-theft system, inclination/intrusion sensors, power front row windows with one-touch up and down, power second row windows, manually telescoping two-way folding trailer tow mirrors with power and heated glass, heated convex spotter mirror, and upgraded door trim panel. Deletes passenger side lock cylinder.

\$865

#### 3.73 Electronic Locking Axle Ratio

\$390

#### Trailer Brake Controller

Includes TowCommand integrated trailer brake controller and smart trailer tow connector (compatible with select electric over hydraulic brakes. 7 and 4-way combo trailer tow socket and bracket deleted with 66D Pickup Box Delete.)

\$270

#### Option Packages Total

\$1,525

Jakobsen Motor Corp.

[jakobsenmotors.com](http://jakobsenmotors.com)

717.431.8330

4200 Oregon Pike

Ephrata, PA 17522

© 2024 AutoRevo - All rights reserved. - Powered by AutoRevo