



2020 Tesla Model 3 Standard Range Plus

Our Price \$26,995

View this vehicle on our website at dakotamotor.com



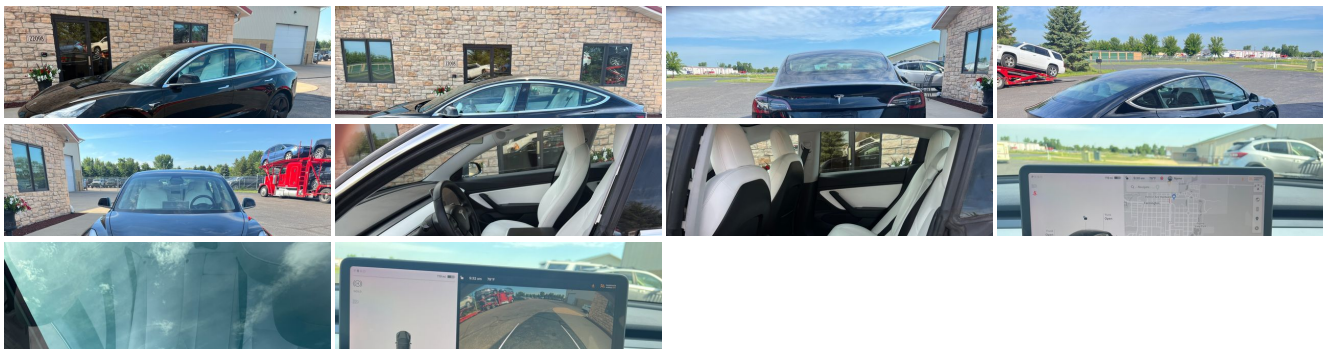
(651) 460-6655

22098 Canton Court, Farmington, MN 55024

Photos

Details

Contact



Specifications:

Year:	2020
VIN:	5YJ3E1EA8LF606738

Make:	Tesla
Model/Trim:	Model 3 Standard Range Plus
Condition:	Pre-Owned
Body:	Sedan
Exterior:	[PBSB] Solid Black
Engine:	Electric 283hp 317ft. lbs.
Interior:	White Leatherette
Transmission:	1-Speed Direct-Drive Automatic
Mileage:	47,268
Drivetrain:	Rear Wheel Drive
Economy:	City 148 / Highway 132

Vehicle Description

LEATHER!!ALL WHEEL DRIVE!!CALL 651-460-6655LOW MILES!! LOW PRICE!!

Introducing the sleek and stunning 2020 Tesla Model 3 Standard Range Plus in a striking black exterior color. This cutting-edge electric vehicle is not only a vision of modernity, but also a powerful and efficient machine that will revolutionize your driving experience. With its white leatherette interior, this Tesla Model 3 exudes elegance and sophistication, creating an atmosphere of pure luxury every time you step inside.

Underneath the hood, the Tesla Model 3 Standard Range Plus boasts an impressive electric engine that generates a whopping 283 horsepower and a staggering 317 foot-pounds of torque. This means that you'll experience lightning-fast acceleration and effortless cruising, leaving other vehicles in the dust. And with its 1-Speed Direct-Drive Automatic transmission, you'll enjoy seamless gear shifts and a smooth ride that is second to none.

But the Tesla Model 3 Standard Range Plus is not just about power and performance. It also comes loaded with an array of manufacturer options and packages that will enhance your driving experience to new heights. From the moment you sit behind the wheel, you'll be greeted by a plethora of advanced features and cutting-edge technology.

Step inside and feel the comfort of the white leatherette seats, meticulously designed to provide the utmost support and luxury. Sink into the plush cushions and experience true relaxation on every journey, whether it's a quick trip to the grocery store or an epic road trip.

The Tesla Model 3 Standard Range Plus is not only a feast for the senses, but also a haven of convenience and innovation. With its intuitive touchscreen display, you'll have access to a world of information and entertainment at your fingertips. From navigation to media streaming, everything is seamlessly integrated into one user-friendly interface, making your driving experience more enjoyable and effortless than ever before.

And let's not forget about the incredible range that the Tesla Model 3 Standard Range Plus offers. With its advanced battery technology, you'll be able to embark on long journeys without worrying about running out of power. Say goodbye to range anxiety and hello to the freedom of exploration.

Safety is also at the forefront of the Tesla Model 3 Standard Range Plus. Equipped with an array of advanced safety features, including collision avoidance and emergency braking, this vehicle is designed to keep you and your loved ones protected on the road. With Tesla's commitment to innovation and cutting-edge technology, you can drive with confidence, knowing that you're in safe hands.

In conclusion, the 2020 Tesla Model 3 Standard Range Plus is a game-changer in the world of electric vehicles. With its sleek black exterior, luxurious white leatherette interior, and powerful electric engine, this car is a true masterpiece. Packed with advanced features and innovative technology, it offers an unparalleled driving experience that will leave you breathless. Don't miss out on the opportunity to own this extraordinary vehicle. Visit our dealership today and let the Tesla Model 3 Standard Range Plus take you on a journey like no other.

Installed Options

Interior

- Air filtration- Front air conditioning: automatic climate control
- Front air conditioning zones: dual- Rear vents: second row
- Center console trim: leatherette- Door trim: faux suede- Floor mat material: carpet
- Steering wheel trim: leatherette- Adaptive cruise control
- Adaptive stop and go cruise control: fully automated- Ambient lighting- Cargo area light
- Cargo cover: hard- Easy entry: power driver seat- Memorized settings: 8 driver
- Power outlet(s): 12V front- Power steering: variable/speed-proportional
- Push-button start- Rearview mirror: auto-dimming
- Steering wheel: power tilt and telescopic
- Universal remote transmitter: Homelink - garage door opener - Clock- Compass
- Digital odometer- External temperature display- Multi-function display- Trip odometer
- Driver seat: heated- Driver seat power adjustments: 12- Front seat type: bucket
- Passenger seat: heated- Passenger seat power adjustments: 12
- Rear seat folding: split- Rear seat type: 60-40 split bench - Upholstery: leatherette

Exterior

- Door handle color: chrome- Front bumper color: body-color
- Mirror color: body-color with chrome accents- Rear spoiler: lip
- Rear trunk/liftgate: power operated- Daytime running lights: LED
- Exterior entry lights: approach lamps- Front fog lights: LED- Taillights: LED
- Side mirror adjustments: power- Side mirrors: auto-dimming
- Moonroof / Sunroof: panoramic- Tire Pressure Monitoring System
- Wheels: aluminum alloy- Front wipers: rain sensing- Tinted glass
- Window defogger: rear

Dakota Motor Company

Dakota Motor Company

View this car on our website at dakotamotor.com/7230739

Website: dakotamotor.com

Phone: [\(651\) 460-6655](tel:(651)460-6655)

Map: [22098 Canton Court, Farmington, MN 55024](#)

