

# 2015 Ram ProMaster 3500 159 WB Wheelchair Van Handicap Ramp Van Lift

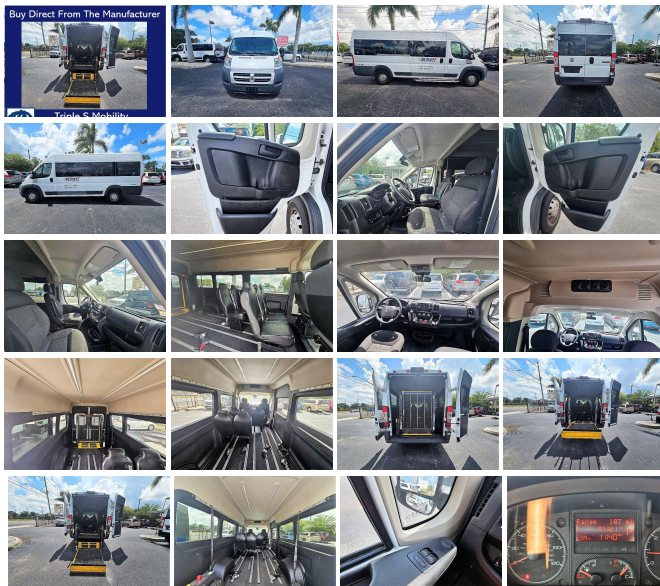
**Customer Service 727-492-1630**

View this car on our website at [triplesmobility.com/7227459/ebrochure](http://triplesmobility.com/7227459/ebrochure)

**Buy Direct From The Manufacturer**



**Triple S Mobility**  
*Simple, Safe & Strong Wheelchair Vans*



**Our Price \$0**

## Specifications:

<b>Year:</b>	2015
<b>VIN:</b>	3C6URVJG9FE520396
<b>Make:</b>	Ram ProMaster 3500 159 WB
<b>Model/Trim:</b>	Wheelchair Van Handicap Ramp Van Lift
<b>Condition:</b>	Pre-Owned
<b>Exterior:</b>	White
<b>Engine:</b>	Pentastar 3.6L V6 280hp 260ft. lbs.
<b>Interior:</b>	Black Cloth
<b>Transmission:</b>	6-Speed Automatic
<b>Mileage:</b>	155,321
<b>Drivetrain:</b>	Front Wheel Drive

Standard Features Include: 3.6L V6 engine, automatic transmission, MP3 Playback, power 1st row windows, power door locks, side mirrors with integrated turn signals, air-conditioning, power steering, power brakes, Premium Brembo brakes, variable intermittent wipers, dual front air bags, 1st row curtain airbags, traction control, tire pressure monitoring, keyless entry, tinted glass.

Accessibility Modifications Include: Commercial grade fully automatic rear entry Braun wheelchair lift 36 in. wide x 51 in. long, seating for 7 occupants and 2 wheelchairs, wheelbase 159 in., raised top, raised doors, door height 67 in., interior height 74 in., 2 sets of Q-strait auto-retracting wheelchair tiedowns.\*

\*Due to manufacturing and conversion components, measurements may vary slightly.

## Our Location :



2015 Ram ProMaster 3500 159 WB Wheelchair Van Handicap Ramp Van Lift

Triple S Mobility, Inc - 727-492-1630 - View this car on our website at [triplesmobility.com/7227459/ebrochure](http://triplesmobility.com/7227459/ebrochure)

## Installed Options

### Interior

- Front air conditioning- Cargo area light- Multi-function remote: keyless entry
- Power outlet(s): 12V front- Power steering: variable/speed-proportional- Sun visors
- Clock- Digital odometer- External temperature display- Trip odometer
- Front seat type: bucket- Upholstery: cloth

### Exterior

- Clearance lights- Side mirrors: integrated turn signals- OEM roof height: high
- Spare wheel type: steel- Tire Pressure Monitoring System- Wheels: steel
- Front wipers: variable intermittent- Power windows

Triple S Mobility, Inc

[triplesmobility.com](http://triplesmobility.com)

727-492-1630

7498 Park Blvd North

Pinellas Park, Florida 33781

© 2024 AutoRevo - All rights reserved. - Powered by AutoRevo