



2016 Ram 1500

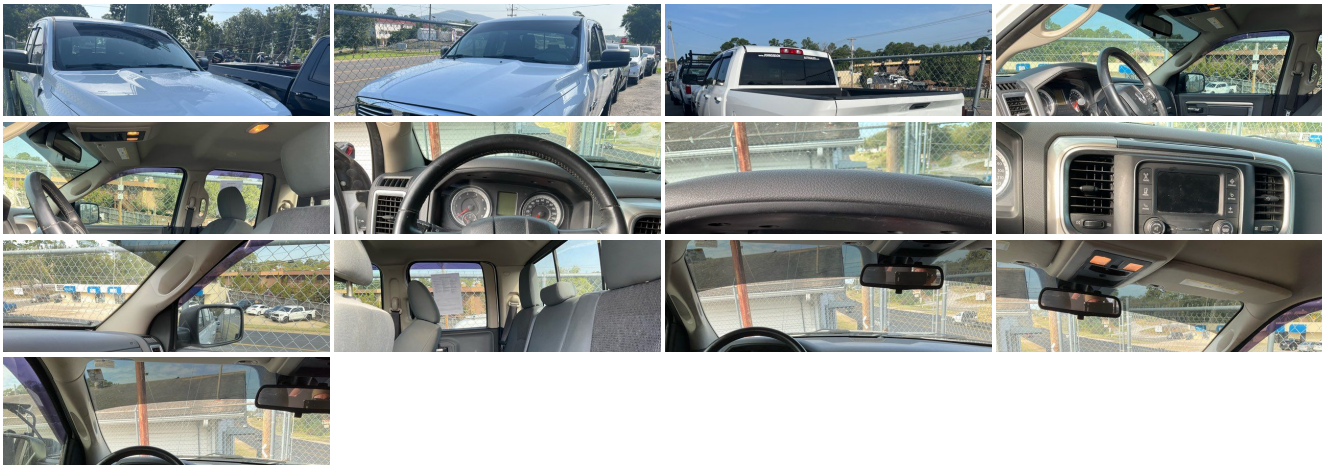
View this vehicle on our website at johngibsonautosales.com



(501) 767-8455

1425 Airport Rd , Hot Springs, Arkansas 71913

Photos
Details
Contact



Specifications:

| | |
|----------------------|--------------------------------|
| Year: | 2016 |
| VIN: | 1C6RR6GT2GS355287 |
| Make: | Ram |
| Stock: | 46183R |
| Model/Trim: | 1500 |
| Condition: | Pre-Owned |
| Body: | Pickup Truck |
| Exterior: | WHITE |
| Engine: | HEMI 5.7L V8 395hp 410ft. lbs. |
| Interior: | N/A Cloth |
| Transmission: | 8-Speed Shiftable Automatic |
| Mileage: | 95,806 |
| Drivetrain: | Rear Wheel Drive |
| Economy: | City 15 / Highway 22 |

Vehicle Description

Installed Options

Interior

- Front air conditioning- Floor mat material: carpet- Floor mats: front- Cruise control
- Multi-function remote: keyless entry- Power outlet(s): 12V- Power steering- Clock
- Compass- Digital odometer- External temperature display- Multi-function display
- Powertrain hour meter- Trip odometer- Front seat type: 40-20-40 split bench
- Passenger seat manual adjustments- Rear seat folding: folds up- Upholstery: cloth

Exterior

- Active grille shutters- Door handle color: chrome- Front bumper color: chrome
- Tailgate: power locking- Side mirror adjustments: power- Side mirrors: heated
- Spare wheel type: steel- Tire Pressure Monitoring System
- Front wipers: variable intermittent- Pickup sliding rear window: power horizontal
- Power windows- Rear privacy glass

It is the customer's sole responsibility to verify the existence and condition of any equipment listed. Neither the dealership nor AutoRevo is responsible for misprints on prices or equipment. It is the customer's sole responsibility to verify the accuracy of the prices with the dealer. Pricing subject to change without notice.

John Gibson Auto Sales

John Gibson Auto Sales

View this car on our website at johngibsonautosales.com/7225141

Website: johngibsonautosales.com

Phone: (501) 767-8455

Map: [1425 Airport Rd, Hot Springs, Arkansas 71913](#)

