



2019 Land Rover Range Rover Evoque HSE ~PANO ROOF~NAVI~BACK UP CAMERA~1 OWNER

Contact Tim Pomp at 901-592-7492 for information or to schedule at test drive! 901-592-7492

Our Price \$41,977

View this vehicle on our website at mtmoriahautos.com

Mt. Moriah Auto Sales

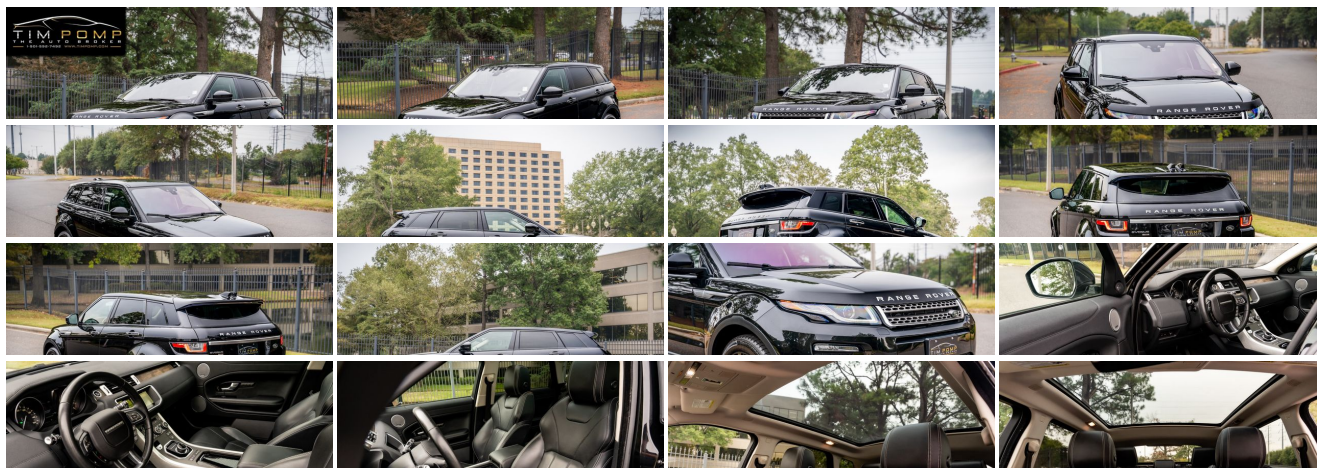
[901-592-7492](tel:901-592-7492)

2571 MT MORIAH RD, Memphis, TN 38115

Photos

Details

Contact





Specifications:

Year:	2019
VIN:	SALVR2RX2KH342019
Make:	Land Rover
Stock:	TPP0615
Model/Trim:	Range Rover Evoque HSE ~PANO ROOF~NAVI~BACK UP CAMERA~1 OWNER
Condition:	Pre-Owned
Body:	SUV
Exterior:	Santorini Black Metallic
Engine:	2.0L Turbo I4 237hp 251ft. lbs.
Interior:	Ebony with Ivory Contrast Stitching Leather
Transmission:	9-Speed Shiftable Automatic
Mileage:	37,052
Drivetrain:	All Wheel Drive
Economy:	City 22 / Highway 29

Vehicle Description

This vehicle is part of Tim Pomp's inventory. Please see Tim Pomp or Reggie Abram only.

Call Tim Pomp @ ..//901...592....7492..// to schedule a test drive. We offer all types of Financing and Extended Warranties. Trades are welcome.

Call Tim Pomp 901-592-7492.

Visit our website at www.TimPomp.com or email Dealertim@aol.com for more information.

Installed Options

Interior

- Air filtration- Front air conditioning: automatic climate control
- Front air conditioning zones: dual- Humidity/dewpoint sensors- Rear vents: second row
- Center console trim: aluminum- Dash trim: leatherette- Door sill trim: chrome
- Door trim: leatherette- Floor mat material: carpet- Floor mats: front
- Interior accents: aluminum- Shift knob trim: aluminum- Steering wheel trim: leather
- Ambient lighting: color-adjustable- Cargo area light- Cargo cover: hard- Cruise control
- Footwell lights- Memorized settings: 3 driver- Power outlet(s): 12V cargo area
- Power steering: variable/speed-proportional- Push-button start
- Rearview mirror: auto-dimming- Steering wheel: tilt and telescopic
- Universal remote transmitter: Homelink - garage door opener - Clock- Compass
- Digital odometer- External temperature display- Multi-function display- Trip odometer
- Driver seat: heated- Driver seat power adjustments: 12- Front seat type: bucket
- Passenger seat: heated- Passenger seat power adjustments: 12
- Rear seat folding: split- Rear seat type: 60-40 split bench - Upholstery: premium leather

Exterior

- Exhaust: dual tip- Front bumper color: body-color- Mirror color: body-color
- Rear spoiler: roofline- Daytime running lights: LED
- Exterior entry lights: approach lamps- Front fog lights- Headlight cleaners
- Rear fog lights- Taillights: LED- Side mirror adjustments: power
- Side mirrors: auto-dimming- Moonroof / Sunroof: panoramic- Spare wheel type: steel
- Tire Pressure Monitoring System- Wheels: alloy- Front wipers: rain sensing
- Laminated glass: infrared-reflecting- Rear privacy glass- Rear wiper: auto-on in reverse
- Solar-tinted glass- Window defogger: rear

*Price does not include taxes, tags, title, license, registration, documentation fee of \$698.00 or other delivery charges.

Mt. Moriah Auto Sales

Mt. Moriah Auto Sales

View this car on our website at mtmoriahautos.com/7218975

Website: mtmoriahautos.com

Phone: [901-592-7492](tel:901-592-7492)

Map: [2571 MT MORIAH RD, Memphis, TN 38115](#)

