

2013 Chevrolet Silverado 1500 LT

View this car on our website at alttx.com/7216318/ebrochure



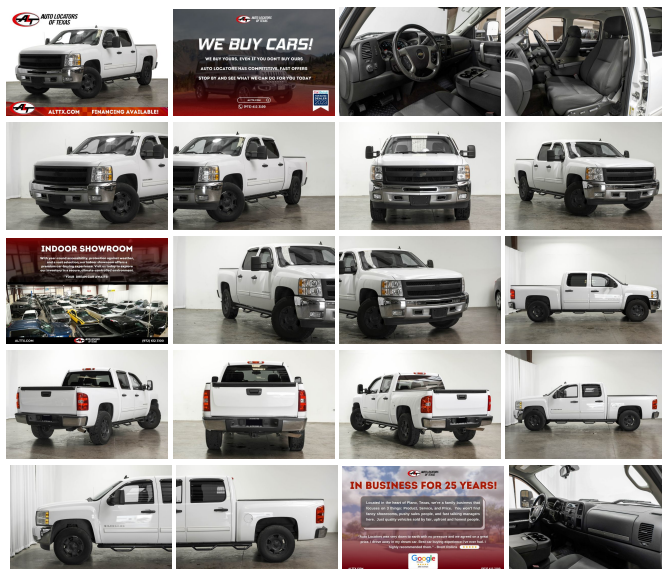
Our Price **\$18,783**

Retail Value **~~\$22,720~~**

Specifications:

Year:	2013
VIN:	3GCPCE02DG258158
Make:	Chevrolet
Stock:	4298
Model/Trim:	Silverado 1500 LT
Condition:	Pre-Owned
Body:	Pickup Truck
Exterior:	Summit White
Engine:	Vortec 5.3L Flex Fuel V8 315hp 335ft. lbs.
Interior:	Ebony Cloth
Transmission:	6-Speed Shiftable Automatic
Mileage:	108,293
Drivetrain:	Rear Wheel Drive
Economy:	City 11 / Highway 16

2013 CHEVROLET Silverado CREW CAB LT



[Financing Available](#)

[CLEAN CARFAX](#)

[LOCAL TEXAS VEHICLE](#)

[SPRAY IN BEDLINER](#)

[SIDE NERF BARS](#)

[Steering Wheel Controls](#)

[Bluetooth Technology](#)

[Hands-Free Communication](#)

[Dual Climate Control](#)

[AM/FM Radio](#)

[CD Player](#)

[Power Windows/Locks](#)

[Power Mirrors](#)

[Cruise Control](#)

Traction Control

External Temperature

Compass, Keyless Entry

Automatic Transmission

Well Maintained

Very Clean!

Professionally Detailed and much more!

CARFAX CERTIFIED

After 25 years in business, we've streamlined the buying process to be completely hassle and stress free. Why wait? We can have you in and out in as little as 45 minutes from the time you step into the dealership to the time you drive away in your new vehicle. Our customers' great reviews have a common theme, great prices, quality vehicles and an efficient no hassle environment. Just look on Yelp and Google to read what our 10,000 plus happy customers are saying about Auto Locators of Texas!

We pride ourselves on our friendly, no-pressure approach to selling vehicles. We offer a wide selection of the highest quality used cars, trucks, and SUV's. Our finance department works hard to find every customer the best deal. Trade-ins are always welcome so we can answer your question of "what is my trade worth".

We offer a wide variety of services from detailing, ding repair, body shop, service, and extended service contracts. Please take a look at our website at <https://www.alttx.com>. We hope to see you soon! WE HOPE TO SEE YOU SOON!

2013 Chevrolet Silverado 1500 LT

Auto Locators of Texas - (972) 612-3100 - View this car on our website at [alttx.com/7216318/ebrochure](https://www.alttx.com/7216318/ebrochure)

Vehicle History Report : as Of 05/12/2024



Snapshot

2013 CHEVROLET SILVERADO 1500 LT



No accidents or damage reported to CARFAX



29 Service history records



3 Previous owners



Personal vehicle



Last owned in Texas



108,432 Last reported odometer reading



FREE CARFAX Report

See the full CARFAX Report for additional information

*carfax Snapshot is a reflection of available information on the date the report was pulled. carfax is constantly being updated with new information and is subject to change at any time.

Our Location :



2013 Chevrolet Silverado 1500 LT

Auto Locators of Texas - (972) 612-3100 - View this car on our website at alttx.com/7216318/ebrochure

Installed Options

Interior

- Front air conditioning- Floor mat material: rubber/vinyl- Floor mats: front
- Steering wheel trim: leather- Cruise control- Multi-function remote: keyless entry
- Power outlet(s): two 12V front- Power steering- Remote engine start prewiring- Compass
- External temperature display- Trip odometer- Front seat type: 40-20-40 split bench
- Rear seat folding: folds up- Rear seat type: 60-40 split bench - Upholstery: cloth

Exterior

- Front bumper color: chrome- Pickup bed light- Daytime running lights
- Side mirrors: heated- Spare wheel type: steel- Tire Pressure Monitoring System
- Wheels: chrome steel- Power windows- Tinted glass

Option Packages

Factory Installed Packages

["Bluetooth for Phone Package", "Includes personal cellphone connectivity to vehicle audio system and HMI (Human Machine Interface)."]

\$175

["Drop-In Bedliner", "Limited Promotion Option."]

\$380

["Trailer Package for M30 4-Speed Transmission", "Includes trailering hitch platform and 2-inch receiver, 7-wire harness (harness includes wires for: park lamps, backup lamps, right turn, left turn, electric brake lead, battery, and ground) with independent fused trailering circuits mated to a 7-way sealed connector, wiring harness for after-market trailer brake controller (located in the instrument panel harness), and external transmission oil cooler. Also includes heavy-duty locking rear differential on Retail orders only."]

\$375

Option Packages Total

\$930