



## 2013 Ford Explorer XLT

**Our Price \$9,995**

View this vehicle on our website at [dakotamotor.com](http://dakotamotor.com)



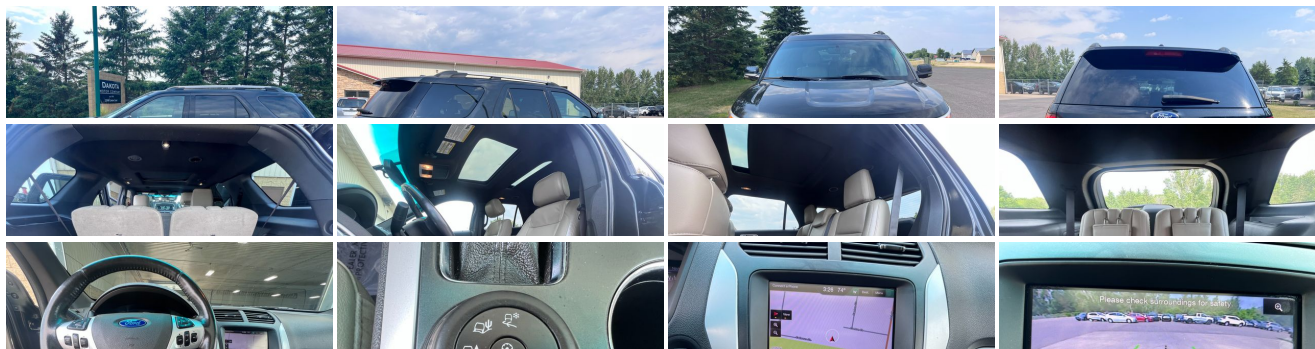
(651) 460-6655

22098 Canton Court , Farmington, MN 55024

Photos

Details

Contact



### Specifications:

**Year:** 2013  
**VIN:** 1FM5K8D84DGA86405

<b>Make:</b>	Ford
<b>Model/Trim:</b>	Explorer XLT
<b>Condition:</b>	Pre-Owned
<b>Body:</b>	SUV
<b>Exterior:</b>	Black
<b>Engine:</b>	3.5L V6 290hp 255ft. lbs.
<b>Interior:</b>	Tan Cloth
<b>Transmission:</b>	6-Speed Shiftable Automatic
<b>Mileage:</b>	154,872
<b>Drivetrain:</b>	All Wheel Drive
<b>Economy:</b>	City 12 / Highway 17

## Vehicle Description

!!!! LOW PRICE!!!!ALL WHEEL DRIVE!!NAVIGATION!!THIRD ROW SEATING!!MOONROOF!!LEATHER!!CALL 651-460-6655

Check out our full line of inventory at [DAKOTAMOTOR.COM](http://DAKOTAMOTOR.COM)

Call us anytime and ask for Bart or David and we will be happy to assist you. For your convenience please call before you come to be certain of availability. Full financing available. All of our vehicles have been checked by our in house service department. All of our vehicles are clean title and have actual miles. Enjoy our low overhead low price philosophy. We buy in bulk and sell at wholesale cost to save you the new car store markup!! 30years in wholesaling makes us retailing's smartest choice for a price savvy saver.

### Installed Options

#### Interior

- Air filtration- Front air conditioning- Rear air conditioning: independently controlled
- Floor mat material: carpet- Floor mats: front- Shift knob trim: alloy
- Steering wheel trim: alloy- Capless fuel filler system- Cargo area light- Cruise control
- Keypad entry- Multi-function remote: keyless entry- Power outlet(s): 12V cargo area
- Power steering- Steering wheel: tilt and telescopic- Clock- Compass- Digital odometer
- External temperature display- Multi-function display- Trip odometer
- Driver seat power adjustments: 6- Front seat type: bucket
- Passenger seat power adjustments: 6- Rear seat folding: flat
- Rear seat type: 60-40 split bench - Third row seat folding: split
- Third row seat type: 50-50 split bench - Upholstery: cloth

#### Exterior

- Door handle color: chrome- Exhaust: dual tip- Front bumper color: body-color
- Rear spoiler: roofline- Exterior entry lights: puddle lamps- Front fog lights
- Taillights: LED- Side mirrors: heated- Roof rack crossbars: black
- Spare wheel type: steel- Tire Pressure Monitoring System- Wheels: painted aluminum
- Front wipers: speed sensitive- Power windows- Rear privacy glass
- Rear wiper: dual speed- Window defogger: rear

Dakota Motor Company

Dakota Motor Company

View this car on our website at [dakotamotor.com/7215617](http://dakotamotor.com/7215617)

Website: [dakotamotor.com](http://dakotamotor.com)

Phone: (651) 460-6655

Map: [22098 Canton Court, Farmington, MN 55024](#)

