



## 2015 Tesla Model S 85D

**Bogdan Poplacean 3017380077**

**Our Price \$22,995**

View this vehicle on our website at [cars.scandinavianimports.com](http://cars.scandinavianimports.com)

**SCANDINAVIAN IMPORT**  
S E R V I C E C E N T E R

[3017380077](tel:3017380077)

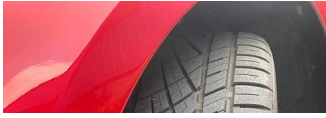
285 Derwood Circle , Rockville, MD 20850

Photos

Details

Contact





## Specifications:

<b>Year:</b>	2015
<b>VIN:</b>	5YJSA1H21FF091159
<b>Make:</b>	Tesla
<b>Stock:</b>	3386
<b>Model/Trim:</b>	Model S 85D
<b>Condition:</b>	Pre-Owned
<b>Body:</b>	Sedan
<b>Exterior:</b>	Red Multi-Coat
<b>Engine:</b>	Electric 376hp 362ft. lbs.
<b>Interior:</b>	Black Leather
<b>Transmission:</b>	1-Speed Direct-Drive Automatic
<b>Mileage:</b>	96,880
<b>Drivetrain:</b>	All Wheel Drive
<b>Economy:</b>	City 95 / Highway 106

## Vehicle Description

FREE UNLIMITED SUPERCHARGING - Dual motor all wheel drive - Highway Autopilot - No Processing Fees - MD Inspected - Like new Continental Tires, Fully Serviced - Road Ready - Very Nice Inside and Out - Clean Carfax - Wood Interior Inlays - 19 Inch Wheels - Sub-Zero package - Backup Camera - Navigation - Heated Leather Seats - Sun Roof - Power Folding Mirrors - Collision Avoidance System - Factory Mats - Contact Us by PHONE at 301-738-0077 or Email [sales@scandicars.com](mailto:sales@scandicars.com) for Appointment time or additional information..... ..Buy The Best Quality From Our Dedicated Shop .....

## Vehicle History Report : as Of 07/10/2025

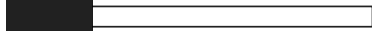


### Snapshot

**2015 TESLA MODEL S 85D**



#### Damage reported: minor damage



MINOR MODERATE SEVERE

1 Service history record



2 Previous owners



Types of owners: Corporate, Personal



**84,390** Last reported odometer reading



**FREE CARFAX Report**

See the full CARFAX Report for additional information

\*carfax Snapshot is a reflection of available information on the date the report was pulled. carfax is constantly being updated with new information and is subject to change at any time.

## Installed Options

### Interior

- Air filtration- Front air conditioning: automatic climate control
- Front air conditioning zones: dual - Rear vents: second row
- Center console trim: leatherette- Dash trim: leatherette- Door trim: leatherette
- Floor mat material: carpet- Floor mats: front- Steering wheel trim: leather
- Ambient lighting- Cargo area light- Cruise control- Memorized settings: 2 driver
- Multi-function remote: proximity entry system- Power outlet(s): 12V
- Power steering: variable/speed-proportional- Push-button start
- Steering wheel: power tilt and telescopic- Clock- Compass
- Customizable instrument cluster- Digital odometer- External temperature display
- Instrument cluster screen size: 12.3 in.- Multi-function display- Trip odometer
- Driver seat: heated- Driver seat power adjustments: 12- Front seat type: bucket
- Passenger seat: heated- Passenger seat power adjustments: 12
- Rear seat folding: split- Rear seat type: 60-40 split bench - Upholstery: premium cloth

### Exterior

- Door handle color: chrome- Front bumper color: body-color
- Grille color: black with chrome accents - Mirror color: body-color with chrome accents
- Rear trunk/liftgate: power operated- Daytime running lights: LED
- Exterior entry lights: approach lamps- Taillights: LED- Side mirrors: heated
- Spare tire kit- Tire Pressure Monitoring System- Wheels: aluminum
- Front wipers: rain sensing- Laminated glass: infrared-reflecting
- Power windows: safety reverse- Tinted glass- Window defogger: rear

## Option Packages

### Factory Installed Packages

["Multi-Coat Paint"]	\$1,500
["Black Alcantara Headliner"]	\$1,500
["Black Leather Seats"]	\$1,500
["Premium Interior Package", "Includes LED accent lighting and extended Nappa leather covering the armrests, driver's airbag cover, and lower dashboard."]	\$3,500
["Subzero Weather Package", "Includes 3 zone rear seat heaters, wiper blade defrosters, washer nozzle heaters, and heated steering wheel."]	\$750
["Tech Package with Autopilot", "Includes Autopilot convenience features available through software updates, onboard maps and navigation for North America with free updates for 7 years, LED cornering lights and fog lamps, automatic keyless entry, lighted door handles, power lightgate, electrochromatic mirrors, power folding and heated side mirrors with memory, and GPS enabled Homelink."]	\$4,250
["Smart Air Suspension", "Includes air suspension system that automatically adjusts stiffness for optimum performance and ride regardless of road surface or cargo. Location aware, the air suspension automatically re-applies manual settings each time it nears previous GPS coordinates."]	\$2,250
["Supercharger Enabled", "Includes all hardware and software to enable supercharging, and unlimited free charging at all Supercharger locations."]	
["Wall Connector", "Includes a 25 ft. cable Wall Connector that is used on a 240 volt circuit and can be supplied with up to twice the amperage as an outlet, 80A. At maximum amperage it supplies two times more power than the Single Charger can process. With Twin Chargers, the charging capacity is doubled to 20 kW to match the output of the High Power Wall Connector."]	\$750
Option Packages Total	\$16,000

Rate subject to bank criteria. Call for more info.

Scandinavian Import Servicer

Scandinavian Import Servicer

View this car on our website at [cars.scandinavianimports.com/7212212](https://cars.scandinavianimports.com/7212212)

Website: [cars.scandinavianimports.com](https://cars.scandinavianimports.com)

Phone: [3017380077](tel:3017380077)

Map: [285 Derwood Circle, Rockville, MD 20850](#)

