

2017 Jeep Compass High Altitude

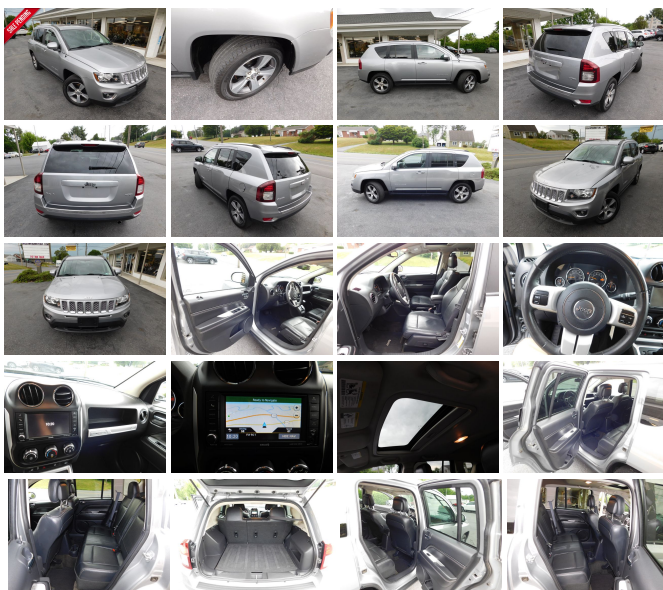
View this car on our website at oregonpikemotors.com/7211438/ebrochure



Our Price **\$16,995**

Specifications:

Year:	2017
VIN:	1C4NJDEBXHD101121
Make:	Jeep
Stock:	P9279J
Model/Trim:	Compass High Altitude
Condition:	Pre-Owned
Body:	SUV
Exterior:	GRAY
Engine:	ENGINE: 2.4L I4 DOHC 16V DUAL VVT
Transmission:	Automatic w/OD
Mileage:	42,286
Drivetrain:	4 Wheel Drive
Economy:	City 20 / Highway 25



Step up to our 2017 Jeep Compass Latitude 4X4 presented in Granite Crystal Metallic Clear Coat. Powered by a 2.4 Liter 4 Cylinder that offers 172hp while connected to a 6 Speed Automatic transmission for supreme passing power. This Four Wheel Drive SUV provides a smooth, comfortable ride with plenty of get-up-and-go while scoring near 27mpg on the highway. Our Compass Latitude is a stand-out with the bold exterior that's accented by a signature grille and distinctive chrome accents.

Open the door of our Latitude cabin that has been tailor-made to fit your needs with remote engine start and heated front seats. Grip the leather-wrapped steering wheel with audio controls and stay safely connected via Uconnect voice command with Bluetooth and available satellite radio.

Drive with confidence with our Jeep knowing ABS, stability and traction control, front-seat side airbags and side curtain airbags are on board to keep your precious cargo safe from harm. A brilliant blend of comfort and convenience, your Compass lets you go farther! Save this Page and Call for Availability. We Know You Will Enjoy Your Test Drive Towards Ownership!

Our Location :



2017 Jeep Compass High Altitude

Oregon Pike Motors - 717-859-3600 - View this car on our website at oregonpikemotors.com/7211438/ebrochure

Installed Options

Interior

- Power Rear Windows and Fixed 3rd Row Windows
- Remote Keyless Entry w/Integrated Key Transmitter, Illuminated Entry and Panic Button
- Manual Air Conditioning- Power 1st Row Windows w/Driver 1-Touch Down
- Power Door Locks w/Autolock Feature- 2-Way Driver Seat -inc: Manual Recline
- 4-Way Passenger Seat -inc: Manual Recline and Fore/Aft Movement
- 60-40 Folding Bench Front Facing Manual Reclining Fold Forward Seatback Rear Seat
- Manual Tilt Steering Column
- Gauges -inc: Speedometer, Odometer, Engine Coolant Temp, Tachometer and Trip Odometer
- Voice Recorder- Leather/Metal-Look Steering Wheel- Illuminated Front Cupholder
- Rear Cupholder- 1 12V DC Power Outlet- Cruise Control w/Steering Wheel Controls
- HVAC -inc: Underseat Ducts- Glove Box- Driver Foot Rest
- Interior Trim -inc: Chrome Instrument Panel Insert, Metal-Look Console Insert and Chrome Interior Accents
- Full Cloth Headliner- Urethane Gear Shifter Material
- Day-Night Auto-Dimming Rearview Mirror- Driver And Passenger Visor Vanity Mirrors
- Full Floor Console w/Covered Storage, 1 12V DC Power Outlet and 1 120V AC Power Outlet
- Front Map Lights- Fade-To-Off Interior Lighting
- Full Carpet Floor Covering -inc: Carpet Front And Rear Floor Mats - Carpet Floor Trim
- Cargo Space Lights- Tip Start
- Instrument Panel Bin, Driver / Passenger And Rear Door Bins - Delayed Accessory Power
- Outside Temp Gauge- Analog Appearance
- Driver And Passenger Heated-Cushion, Driver And Passenger Heated-Seatback
- Manual Anti-Whiplash Adjustable Front Head Restraints and Fixed Rear Head Restraints
- Sliding Front Center Armrest w/Storage- Manual Driver Lumbar Adjust
- Sentry Key Immobilizer- 1 12V DC Power Outlet and 1 120V AC Power Outlet
- Air Filtration

Option Packages

Factory Installed Packages

ENGINE: 2.4L I4 DOHC 16V DUAL VVT

Exterior

- Wheels: 17" x 6.5" Granite Painted Pocket - Tires: P225/60R17 BSW AS
- Tailgate/Rear Door Lock Included w/Power Door Locks- Steel Spare Wheel
- Compact Spare Tire Mounted Inside Under Cargo- Clearcoat Paint
- Front Bumper w/Black Rub Strip/Fascia Accent
- Step Bumper w/Black Rub Strip/Fascia Accent- Black Bodyside Cladding
- Black Side Windows Trim and Black Front Windshield Trim - Body-Colored Door Handles
- Body-Colored Power Heated Side Mirrors w/Manual Folding
- Fixed Rear Window w/Fixed Interval Wiper and Defroster- Deep Tinted Glass
- Variable Intermittent Wipers- Fully Galvanized Steel Panels- Lip Spoiler- Chrome Grille
- Liftgate Rear Cargo Access- Auto On/Off Aero-Composite Halogen Headlamps
- Front Fog Lamps- LED Brake Lights

Safety

- Power Rear Windows and Fixed 3rd Row Windows
- Remote Keyless Entry w/Integrated Key Transmitter, Illuminated Entry and Panic Button
- Manual Air Conditioning- Power 1st Row Windows w/Driver 1-Touch Down
- Power Door Locks w/Autolock Feature- 2-Way Driver Seat -inc: Manual Recline
- 4-Way Passenger Seat -inc: Manual Recline and Fore/Aft Movement
- 60-40 Folding Bench Front Facing Manual Reclining Fold Forward Seatback Rear Seat
- Manual Tilt Steering Column
- Gauges -inc: Speedometer, Odometer, Engine Coolant Temp, Tachometer and Trip Odometer
- Voice Recorder- Leather/Metal-Look Steering Wheel- Illuminated Front Cupholder
- Rear Cupholder- 1 12V DC Power Outlet- Cruise Control w/Steering Wheel Controls
- HVAC -inc: Underseat Ducts- Glove Box- Driver Foot Rest
- Interior Trim -inc: Chrome Instrument Panel Insert, Metal-Look Console Insert and Chrome Interior Accents
- Full Cloth Headliner- Urethane Gear Shifter Material
- Day-Night Auto-Dimming Rearview Mirror- Driver And Passenger Visor Vanity Mirrors
- Full Floor Console w/Covered Storage, 1 12V DC Power Outlet and 1 120V AC Power Outlet
- Front Map Lights- Fade-To-Off Interior Lighting
- Full Carpet Floor Covering -inc: Carpet Front And Rear Floor Mats - Carpet Floor Trim
- Cargo Space Lights- Tip Start
- Instrument Panel Bin, Driver / Passenger And Rear Door Bins - Delayed Accessory Power
- Outside Temp Gauge- Analog Appearance
- Driver And Passenger Heated-Cushion, Driver And Passenger Heated-Seatback
- Manual Anti-Whiplash Adjustable Front Head Restraints and Fixed Rear Head Restraints
- Sliding Front Center Armrest w/Storage- Manual Driver Lumbar Adjust
- Sentry Key Immobilizer- 1 12V DC Power Outlet and 1 120V AC Power Outlet
- Air Filtration

Mechanical

- Transmission: 6-Speed Automatic- AutoStick Automatic Transmission
- Engine: 2.4L I4 DOHC 16V Dual VVT- 3.37 Axle Ratio- GVWR: 4,575 lbs
- 50-State Emissions- Electronic Transfer Case- Automatic Full-Time Four-Wheel Drive
- 60-Amp/Hr 525CCA Maintenance-Free Battery w/Run Down Protection
- 120 Amp Alternator- 925# Maximum Payload- Gas-Pressurized Shock Absorbers
- Front And Rear Anti-Roll Bars- Touring Suspension- Hydraulic Power-Assist Steering
- Single Stainless Steel Exhaust- 13.5 Gal. Fuel Tank- Permanent Locking Hubs
- Strut Front Suspension w/Coil Springs- Multi-Link Rear Suspension w/Coil Springs
- 4-Wheel Disc Brakes w/4-Wheel ABS, Front Vented Discs and Brake Assist

SUBJECT TO APPROVAL

Oregon Pike Motors

oregonpikemotors.com

717-859-3600

3919 Oregon Pike

Ephrata, PA 17522

© 2024 AutoRevo - All rights reserved. - Powered by AutoRevo