

2018 Chevrolet Express Cargo Van 2500

View this car on our website at dougjustus.com/7211398/ebrochure



Our Price **\$16,995**

Specifications:

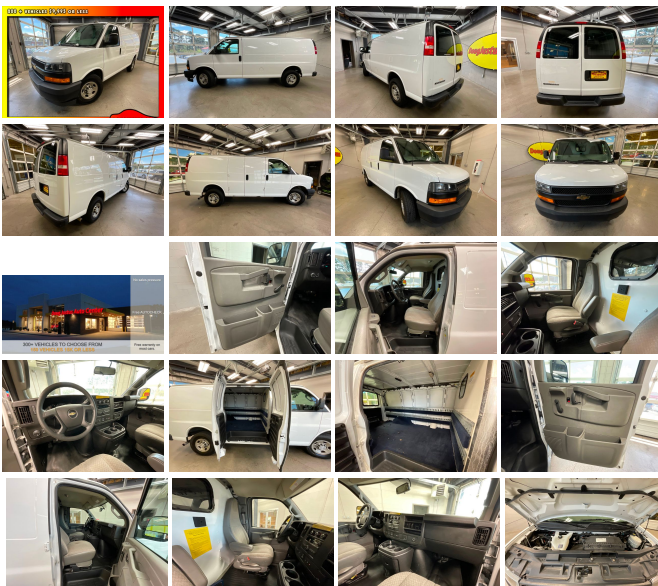
Year:	2018
VIN:	1GCWGAFP3J1181686
Make:	Chevrolet
Stock:	C81686
Model/Trim:	Express Cargo Van 2500
Condition:	Pre-Owned
Body:	Minivan/Van
Exterior:	WHITE
Engine:	ENGINE, 4.3L V6
Interior:	Gray Cloth
Transmission:	Automatic
Mileage:	107,652
Drivetrain:	Rear Wheel Drive

Free 30-Days or 1000 miles limited Powertrain Warranty. Visit our website for more details.

****ONE OWNER****

2018 Chevrolet Express 2500 Cargo Van comes equipped with an automatic transmission, a 4.3L, V6 engine, power locks, backup camera, barn doors and more.

Visit www.dougjustus.com, call: *865-281-1540*, or text: *865-214-0010* for more info.



2018 Chevrolet Express Cargo Van 2500

Doug Justus Auto Center Inc - (865)281-1540 - View this car on our website at dougjustus.com/7211398/ebrochure

Vehicle History Report : as Of 04/08/2024



Snapshot

2018 CHEVROLET EXPRESS 2500



No accidents or damage reported to CARFAX



21 Service history records



CARFAX 1-Owner vehicle



Commercial vehicle



Last owned in Tennessee



107,652 Last reported odometer reading



FREE CARFAX Report

See the full CARFAX Report for additional information

*carfax Snapshot is a reflection of available information on the date the report was pulled. carfax is constantly being updated with new information and is subject to change at any time.

Our Location :



2018 Chevrolet Express Cargo Van 2500

Doug Justus Auto Center Inc - (865)281-1540 - View this car on our website at dougjustus.com/7211398/ebrochure

Installed Options

Interior

- Seats, front bucket with vinyl trim and outboard head restraints, includes inboard armrests. (Requires (**W) interior trim. Includes (DAA) driver and front passenger vinyl visors.)
- Seating arrangement, driver and front passenger high-back buckets with head restraints and vinyl or cloth trim (Not available with (AJ3) driver-side only frontal air bag.)
- Air conditioning, single-zone manual (Not available with (R6G) air conditioning delete.)
- Driver Information Center includes fuel range, average speed, oil life, tire pressure monitoring, fuel used, ice warning, engine hours, average fuel economy, tachometer, and maintenance reminders. Compass and outside temperature available if equipped.
- Door locks, power with lock-out protection (Included with (ZQ2) Power Convenience Package. NOTE: Does not include (ATG) Remote Keyless Entry. (ATG) Remote Keyless Entry must be ordered separately.)
- Windows, power (Included with (ZQ2) Power Convenience Package.)
- Power outlets, 2 auxiliary on engine console cover with covers, 12-volt
- Power outlet, 120-volt- Mirror, inside rearview includes Rear Vision Camera display
- Console, engine cover with open storage bin
- Floor covering, full-length Black rubberized-vinyl (Not available with (RFM) rear floor covering delete, (5BV) Upfitter electrical or (PCH) Hotel Shuttle Package.)
- Steering wheel, steel sleeve column with theft-deterrent locking feature, Black
- Instrumentation, analog with speedometer, odometer with trip odometer, fuel level,

Option Packages

Factory Installed Packages

ENGINE, 4.3L V6

with Direct Injection and Variable Valve Timing,
includes aluminum block construction (276 hp
[206 kW] @ 5200 rpm, 298 lb-ft of torque [404
Nm] @ 3900 rpm)

- voltmeter, engine temperature and oil pressure
- Oil life monitor- Warning tones, headlamp on and key-in-ignition
- Tow/haul mode selector, instrument panel-mounted
- Theft-deterrent system, vehicle, PASS-Key III- Defogger, side windows
- Cup holders, 3 on the engine console cover
- Trim panels, hinged rear side doors and hinged rear doors (Not available with (Y3H) Paratransit Package or (5BV) Upfitter electrical provisions.)
- Headliner, cloth, over driver and passenger
- Visors, driver and front passenger, cloth, padded
- Assist handles, driver and right-front passenger
- Lighting, interior with 4 dome lights 1 overhead and 3 LED's on cross members in cargo area, includes defeat switch and door handle-activated switches
- Cargo tie-downs 6 D-ring attachments on cargo area floor (Not available with (Y3H) Paratransit Package, (5BV) Upfitter electrical provisions or (ZP6) 5-passenger Express Crew Van.)

Exterior

- Wheels, 4 - 16" x 6.5" (40.6 cm x 16.5 cm) steel includes Gray center caps and steel spare
- Tire, spare LT245/75R16E all-season, blackwall located at rear underbody of vehicle
- Door, swing-out passenger-side, 60/40 split
- Tires, front LT245/75R16E all-season, blackwall
- Tires, rear LT245/75R16E all-season, blackwall
- Bumpers, front and rear painted Black with step-pad
- Headlamps, dual halogen composite- Mirrors, outside manual, Black
- Glass, Solar-Ray light-tinted, all windows
- Wipers, front intermittent wet-arm with pulse washers

Safety

- Seats, front bucket with vinyl trim and outboard head restraints, includes inboard armrests. (Requires (**W) interior trim. Includes (DAA) driver and front passenger vinyl visors.)
- Seating arrangement, driver and front passenger high-back buckets with head restraints and vinyl or cloth trim (Not available with (AJ3) driver-side only frontal air bag.)
- Air conditioning, single-zone manual (Not available with (R6G) air conditioning delete.)
- Driver Information Center includes fuel range, average speed, oil life, tire pressure monitoring, fuel used, ice warning, engine hours, average fuel economy, tachometer, and maintenance reminders. Compass and outside temperature available if equipped.
- Door locks, power with lock-out protection (Included with (ZQ2) Power Convenience Package. NOTE: Does not include (ATG) Remote Keyless Entry. (ATG) Remote Keyless Entry must be ordered separately.)
- Windows, power (Included with (ZQ2) Power Convenience Package.)
- Power outlets, 2 auxiliary on engine console cover with covers, 12-volt
- Power outlet, 120-volt- Mirror, inside rearview includes Rear Vision Camera display
- Console, engine cover with open storage bin
- Floor covering, full-length Black rubberized-vinyl (Not available with (RFM) rear floor covering delete, (5BV) Upfitter electrical or (PCH) Hotel Shuttle Package.)
- Steering wheel, steel sleeve column with theft-deterrent locking feature, Black
- Instrumentation, analog with speedometer, odometer with trip odometer, fuel level, voltmeter, engine temperature and oil pressure
- Oil life monitor- Warning tones, headlamp on and key-in-ignition
- Tow/haul mode selector, instrument panel-mounted
- Theft-deterrent system, vehicle, PASS-Key III- Defogger, side windows
- Cup holders, 3 on the engine console cover
- Trim panels, hinged rear side doors and hinged rear doors (Not available with (Y3H) Paratransit Package or (5BV) Upfitter electrical provisions.)
- Headliner, cloth, over driver and passenger
- Visors, driver and front passenger, cloth, padded
- Assist handles, driver and right-front passenger
- Lighting, interior with 4 dome lights 1 overhead and 3 LED's on cross members in cargo area, includes defeat switch and door handle-activated switches
- Cargo tie-downs 6 D-ring attachments on cargo area floor (Not available with (Y3H) Paratransit Package, (5BV) Upfitter electrical provisions or (ZP6) 5-passenger Express Crew Van.)

Mechanical

- Transmission, 8-speed automatic, electronically controlled with overdrive and tow/haul mode, includes Cruise Grade Braking and Powertrain Grade Braking (Requires (LV1) 4.3L V6 SIDI engine or (LWN) 2.8L Duramax Turbo-Diesel engine.)
- Engine, 4.3L V6 with Direct Injection and Variable Valve Timing, includes aluminum block construction (276 hp [206 kW] @ 5200 rpm, 298 lb-ft of torque [404 Nm] @ 3900 rpm) (Reference the Engine/Axle page for availability.)
- Rear axle, 3.42 ratio (Reference the Engine/Axle page for availability.) - Body, standard
- GVWR, 8600 lbs. (3901 kg) (Reference the Engine/Axle page for availability.)
- Transmission oil cooler, external (Not available with (LWN) 2.8L Duramax Turbo-Diesel engine.)
- Rear wheel drive

rear wheel drive

- Cooling, external engine oil cooler (Not available with (LWN) 2.8L Duamax Turbo-Diesel engine.)
- Battery, 600 cold-cranking amps, maintenance-free with rundown protection and retained accessory power
- Alternator, 105 amps (Not available with (Y3H) Paratransit Package, (C69) rear air conditioning, (9L7) Wiring junction block equipment accessory, (5BV) Upfitter electrical provisions or (LWN) 2.8L Duramax Turbo-Diesel engine.)
- Frame, full-length box ladder-type
- Suspension, front independent with coil springs and stabilizer bar
- Suspension, rear hypoid drive axle with multi-leaf springs- Steering, power
- Brakes, 4-wheel antilock, 4-wheel disc
- Fuel tank capacity, mid-frame and approximately 31 gallons (117.3L)
- Exhaust, aluminized stainless-steel muffler and tailpipe

Doug Justus Auto Center Inc

dougjustus.com

(865)281-1540

872 Mimosa Heights Dr.

Airport Motor Mile (Alcoa) , TN 37777

© 2024 AutoRevo - All rights reserved. - Powered by AutoRevo