

2002 Ford Excursion XLT Spec. Service

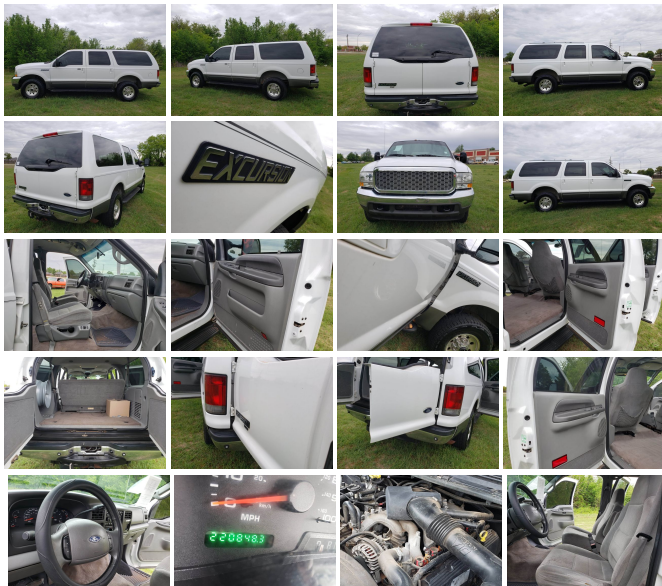
View this car on our website at classic405motors.com/7211241/ebrochure



Our Price **\$8,900**

Specifications:

Year:	2002
VIN:	1FMNU41S62ED64118
Make:	Ford
Model/Trim:	Excursion XLT Spec. Service
Condition:	Pre-Owned
Body:	SUV
Exterior:	Oxford White
Engine:	6.8L (415) SOHC SEFI V10 ENGINE
Interior:	Gray Cloth
Transmission:	Automatic w/OD
Mileage:	220,000
Drivetrain:	4 Wheel Drive



CLASSIC 405 MOTORS PRESENTS

2002 FORD EXCUSION

V10 ENGINE FUEL INJECTION

AUTOMATIC TRANS

4X4

RUNS GREAT COLD AC

PAINT IS TIRED AND SHOWS BLEMISHES

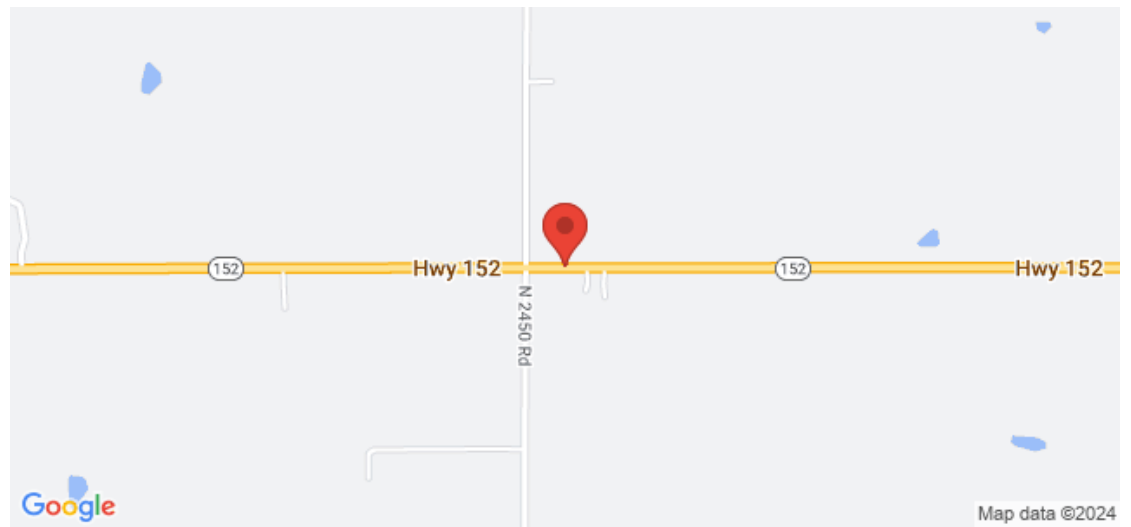
for more information or photos call Russ #4 0 5 4 7 3 3 2 0 4

WE ARE A SMALL TOWN FAMILY OWNED CLASSIC CAR DEALER
NEAR OKLAHOMA CITY AND WE ARE ONLY 10 MINUTES FROM
WILL ROGERS WORLD AIRPORT .

come see us today at 780 west hwy 152 Mustang Oklahoma 73064

visit us @ classic405motors.com

Our Location :



2002 Ford Excursion XLT Spec. Service

Classic 405 Motors - 4054733204 - View this car on our website at classic405motors.com/7211241/ebook

Installed Options

Interior

- 1st row cloth seat trim/2nd row vinyl seat trim - Front captains chairs
- Manual front air conditioning
- Premium electronic AM/FM stereo w/compact disc/cassette-inc: 80-watt amp
- Pwr door locks w/autolock- Remote keyless entry-inc: 2-transmitters, door keypad
- (4) auxiliary pwr points- (6) cup holders- 1st/2nd row assist handles
- 2nd row reclining 60/40 split bench seat-inc: dual tip/slide feature, center armrests, outboard headrests, cup holders
- Black vinyl floor covering- Cigarette lighter- Color-keyed instrument panel
- Color-keyed sun visors-inc: illuminated vanity mirrors, secondary sun blade
- Door panels-inc: soft armrest, padded upper vinyl insert, dual map pockets, pockets, lower carpet, molded speaker grille
- Dual coat hooks in cargo area- Dual coat hooks over 2nd row doors- Glove box
- Instrumentation-inc: tachometer, trip odometer, voltmeter, oil pressure/ coolant temp/fuel gauges
- Leather steering wheel
- Lights-inc: underhood, glove box, front dome/map, front door courtesy, overhead rear cargo, 2nd/3rd row map lights
- Molded cloth headliner- Overhead console w/storage- Passive anti-theft system
- Pwr windows w/driver one-touch-down- Rear floor heat ducts- Rear window defroster
- Speed control- Tilt steering column

Exterior

- Black pwr heated mirrors- Intermittent windshield wipers
- Rear window intermittent wiper w/washer- Black rear step bumper- Black running boards
- Chrome front bumper w/Medium Platinum valance- Color-keyed door handles
- Crystalline headlights- Grille w/grey inserts- Privacy glass- Roof rack w/o crossbars
- Tri-panel rear door-inc: top half liftgate, 2 lower swing-out cargo doors

Safety

- 1st row cloth seat trim/2nd row vinyl seat trim - Front captains chairs
- Manual front air conditioning
- Premium electronic AM/FM stereo w/compact disc/cassette-inc: 80-watt amp
- Pwr door locks w/autolock- Remote keyless entry-inc: 2-transmitters, door keypad
- (4) auxiliary pwr points- (6) cup holders- 1st/2nd row assist handles
- 2nd row reclining 60/40 split bench seat-inc: dual tip/slide feature, center armrests, outboard headrests, cup holders
- Black vinyl floor covering- Cigarette lighter- Color-keyed instrument panel
- Color-keyed sun visors-inc: illuminated vanity mirrors, secondary sun blade
- Door panels-inc: soft armrest, padded upper vinyl insert, dual map pockets, pockets, lower carpet, molded speaker grille
- Dual coat hooks in cargo area- Dual coat hooks over 2nd row doors- Glove box
- Instrumentation-inc: tachometer, trip odometer, voltmeter, oil pressure/ coolant temp/fuel gauges
- Leather steering wheel
- Lights-inc: underhood, glove box, front dome/map, front door courtesy, overhead rear cargo, 2nd/3rd row map lights
- Molded cloth headliner- Overhead console w/storage- Passive anti-theft system
- Pwr windows w/driver one-touch-down- Rear floor heat ducts- Rear window defroster
- Speed control- Tilt steering column

Mechanical

- (5) LT265/75R16 all-season SBR BSW tires- 4-speed automatic transmission w/OD
- 4-wheel anti-lock braking system- Full size spare tire w/steel wheel- (2) front tow hooks
- (4) 16" x 7.0" argent steel wheels w/black center - 130 amp alternator
- 2-speed transfer case w/Control Trac Shift-on-the-Fly- 3.73 axle ratio- 4-wheel drive
- 44 gallon fuel tank- 6.8L (415) SOHC SEFI V10 engine - 78 amp/hr (750 CCA) battery
- 8,900# GVWR (3800 front/5240 rear), springs (3800 front/5240 rear), axles (5200 front/7000 rear)
- Battery saver
- Class IV trailer towing pkg-inc: 7-wire harness, trailer brake wiring kit, towing guide
- Engine block heater *STD & only available in AK, MN, ND, SD, MT, WI, & WY*
- Front stabilizer bar- Pwr 4-wheel disc brakes- Pwr steering

Option Packages

Factory Installed Packages

6.8L (415) SOHC SEFI V10 ENGINE

Classic 405 Motors

classic405motors.com

4054733204

780 West Highway 152

Mustang, OK 73064

© 2024 AutoRevo - All rights reserved. - Powered by [AutoRevo](#)