

2016 Nissan Pathfinder S

View this car on our website at carbuffs.com/7209603/ebrochure

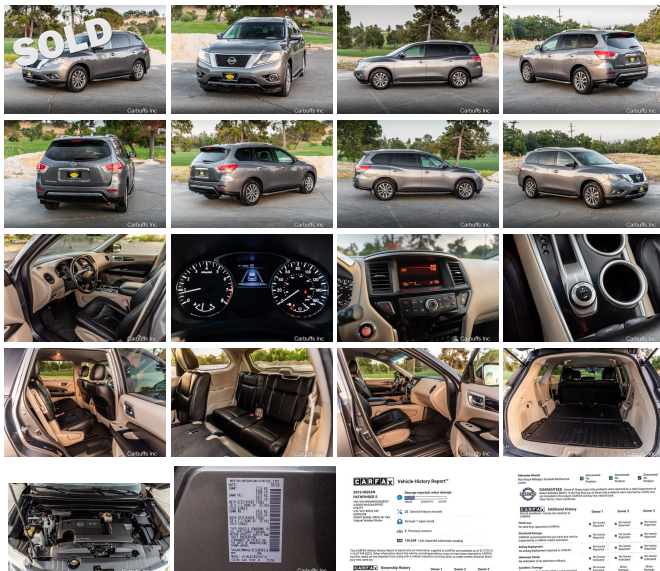


Our Price **\$0**

Specifications:

Year: 2016
VIN: 5N1AR2MMXGC658951
Make: Nissan
Model/Trim: Pathfinder S
Condition: Pre-Owned
Body: SUV
Exterior: Gun Metallic
Engine: Engine: 3.5L V6
Interior: Almond Cloth
Transmission: CVT w/OD
Mileage: 158,000
Drivetrain: 4 Wheel Drive
Economy: City 19 / Highway 26

Great 4wd SUV! Gun metallic exterior with almond/black interior. 3.5L V6 engine with automatic transmission. Power windows and locks with keyless push button start. 3rd row seating. Runs and drives excellent. Clean California title in-hand.



Our Location :



2016 Nissan Pathfinder S
 Carbuffs - (925) 671-2010 - View this car on our website at carbuffs.com/7209603/ebrochure

Installed Options

Interior

- Cloth Seat Trim- Dual Zone Front Automatic Air Conditioning
- Fixed Bench 3rd Row Seat Front and 2 Fixed Head Restraints
- Front Bucket Seats -inc: 7 passenger seating capacity, 6-way manual driver's seat and 2-way manual lumbar support and 4-way manual front passenger seat
- 2 12V DC Power Outlets- 2 Seatback Storage Pockets- Air Filtration
- Analog Appearance- Cargo Area Concealed Storage- Cargo Space Lights
- Carpet Floor Trim- Cloth Door Trim Insert- Cruise Control w/Steering Wheel Controls
- Day-Night Rearview Mirror- Delayed Accessory Power
- Driver / Passenger And Rear Door Bins
- Driver And Passenger Visor Vanity Mirrors w/Driver And Passenger Auxiliary Mirror
- Driver Foot Rest- Driver Seat- FOB Controls -inc: Windows- Fade-To-Off Interior Lighting
- Front Center Armrest w/Storage and Rear Center Armrest w/Storage- Front Cupholder
- Front Facing Rear Seat- Front Map Lights- Full Carpet Floor Covering
- Full Cloth Headliner
- Full Floor Console w/Covered Storage, Mini Overhead Console w/Storage and 2 12V DC Power Outlets
- Gauges -inc: Speedometer, Odometer, Engine Coolant Temp, Tachometer, Trip Odometer and Trip Computer
- HVAC -inc: Underseat Ducts, Headliner/Pillar Ducts and Console Ducts
- Illuminated Locking Glove Box- Immobilizer
- Interior Trim -inc: Metal-Look Instrument Panel Insert, Metal-Look Door Panel Insert, Metal-Look Console Insert and Chrome/Metal-Look Interior Accents
- Manual Adjustable Front Head Restraints and Manual Adjustable Rear Head Restraints
- Manual Tilt/Telescoping Steering Column- Outside Temp Gauge- Passenger Seat
- Perimeter Alarm- Power 1st Row Windows w/Driver 1-Touch Down
- Power Door Locks w/Autolock Feature
- Power Rear Windows and Fixed 3rd Row Windows- Rear Cupholder
- Rear HVAC w/Separate Controls
- Remote Keyless Entry w/Integrated Key Transmitter, Illuminated Entry, Illuminated Ignition Switch and Panic Button

Option Packages

Factory Installed Packages

[B92] BLACK SPLASH GUARDS (SET OF 4)	\$160
[L92] CARPETED FLOOR MATS (4-PC SET) -inc: 1st, 2nd and 3rd rows	\$210
GUN METALLIC	
Option Packages Total	\$370

SWITCH AND PANIC BUTTON

- Seats w/Cloth Back Material- Trip Computer- Urethane Gear Shifter Material
- Valet Function

Exterior

- Aero-Composite Halogen Headlamps- Black Bodyside Cladding
- Black Grille w/Chrome Surround
- Black Side Windows Trim and Black Front Windshield Trim - Body-Colored Front Bumper
- Body-Colored Power Side Mirrors w/Manual Folding
- Body-Colored Rear Bumper w/Black Rub Strip/Fascia Accent and Chrome Bumper Insert
- Chrome Door Handles- Clearcoat Paint
- Compact Spare Tire Stored Underbody w/Crankdown- Deep Tinted Glass
- Fixed Rear Window w/Fixed Interval Wiper and Defroster
- Front Windshield -inc: Sun Visor Strip- Fully Galvanized Steel Panels
- Liftgate Rear Cargo Access- Lip Spoiler- Roof Rack Rails Only- Steel Spare Wheel
- Tailgate/Rear Door Lock Included w/Power Door Locks - Tires: P235/65R18 AS
- Variable Intermittent Wipers- Wheels: 18" Aluminum-Alloy

Safety

- Cloth Seat Trim- Dual Zone Front Automatic Air Conditioning
- Fixed Bench 3rd Row Seat Front and 2 Fixed Head Restraints
- Front Bucket Seats -inc: 7 passenger seating capacity, 6-way manual driver's seat and 2-way manual lumbar support and 4-way manual front passenger seat
- 2 12V DC Power Outlets- 2 Seatback Storage Pockets- Air Filtration
- Analog Appearance- Cargo Area Concealed Storage- Cargo Space Lights
- Carpet Floor Trim- Cloth Door Trim Insert- Cruise Control w/Steering Wheel Controls
- Day-Night Rearview Mirror- Delayed Accessory Power
- Driver / Passenger And Rear Door Bins
- Driver And Passenger Visor Vanity Mirrors w/Driver And Passenger Auxiliary Mirror
- Driver Foot Rest- Driver Seat- FOB Controls -inc: Windows- Fade-To-Off Interior Lighting
- Front Center Armrest w/Storage and Rear Center Armrest w/Storage- Front Cupholder
- Front Facing Rear Seat- Front Map Lights- Full Carpet Floor Covering
- Full Cloth Headliner
- Full Floor Console w/Covered Storage, Mini Overhead Console w/Storage and 2 12V DC Power Outlets
- Gauges -inc: Speedometer, Odometer, Engine Coolant Temp, Tachometer, Trip Odometer and Trip Computer
- HVAC -inc: Underseat Ducts, Headliner/Pillar Ducts and Console Ducts
- Illuminated Locking Glove Box- Immobilizer
- Interior Trim -inc: Metal-Look Instrument Panel Insert, Metal-Look Door Panel Insert, Metal-Look Console Insert and Chrome/Metal-Look Interior Accents
- Manual Adjustable Front Head Restraints and Manual Adjustable Rear Head Restraints
- Manual Tilt/Telescoping Steering Column- Outside Temp Gauge- Passenger Seat
- Perimeter Alarm- Power 1st Row Windows w/Driver 1-Touch Down
- Power Door Locks w/Autolock Feature
- Power Rear Windows and Fixed 3rd Row Windows- Rear Cupholder
- Rear HVAC w/Separate Controls
- Remote Keyless Entry w/Integrated Key Transmitter, Illuminated Entry, Illuminated Ignition Switch and Panic Button
- Seats w/Cloth Back Material- Trip Computer- Urethane Gear Shifter Material
- Valet Function

Mechanical

- 150 Amp Alternator- 19.5 Gal. Fuel Tank
- 4-Wheel Disc Brakes w/4-Wheel ABS, Front And Rear Vented Discs, Brake Assist, Hill Descent Control and Hill Hold Control
- 5.25 Axle Ratio- 82-Amp/Hr Maintenance-Free Battery w/Run Down Protection
- Auto Locking Hubs- Brake Actuated Limited Slip Differential
- Electro-Hydraulic Power Assist Speed-Sensing Steering- Electronic Transfer Case
- Engine: 3.5L V6- Front And Rear Anti-Roll Bars- GVWR: 5,985 lbs
- Gas-Pressurized Shock Absorbers- Multi-Link Rear Suspension w/Coil Springs
- Part And Full-Time Four-Wheel Drive- Single Stainless Steel Exhaust
- Strut Front Suspension w/Coil Springs- Transmission w/Driver Selectable Mode
- Transmission: Xtronic CVT (Continuously Variable)

carbuffs.com

(925) 671-2010

2281-A Via De Mercados

Concord, CA 94520

© 2024 AutoRevo - All rights reserved. - Powered by AutoRevo