

2014 Ram 3500 Laramie

View this car on our website at addisonautoplex.com/7209510/ebrochure

Sales Price **\$33,995**

Specifications:

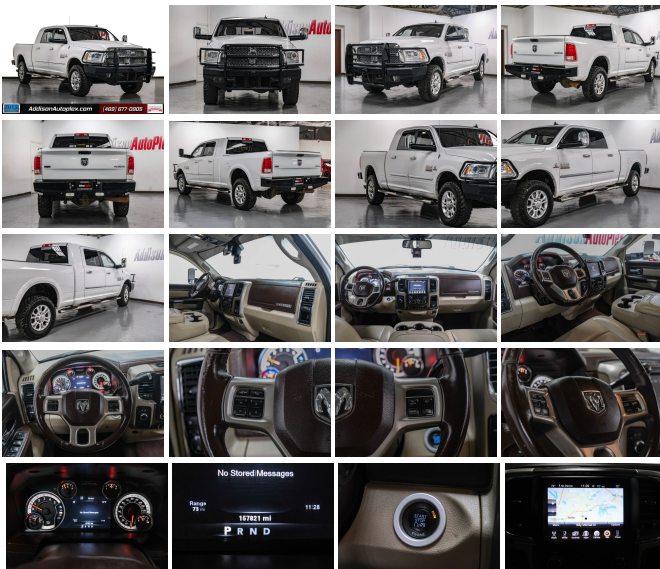
Year:	2014
VIN:	3C63R3ML9EG123752
Make:	Ram
Stock:	N6243
Model/Trim:	3500 Laramie
Condition:	Pre-Owned
Body:	Pickup Truck
Exterior:	Bright White Clearcoat
Engine:	ENGINE: 6.7L I6 CUMMINS TURBO DIESEL
Interior:	Gray Leather
Transmission:	TRANSMISSION: 6-SPEED 850 TORQUE OUTPUT AISIN
Mileage:	157,821
Drivetrain:	4 Wheel Drive

Are you in the market for a powerful and luxurious pickup truck? Look no further than the 2014 Ram 3500 Laramie. This stunning truck boasts a sleek white exterior that is sure to turn heads on the road. And once you step inside, you'll be greeted with a spacious and comfortable gray leather interior that is perfect for long drives or tough jobs.

But the real star of the show is the engine. This Ram 3500 is equipped with a 6.7L I6 Cummins Turbo Diesel engine that delivers unparalleled power and performance. You'll be able to tow and haul just about anything you need with ease, thanks to the impressive 850 torque output Aisin transmission. Whether you're on the job site or heading out for a weekend adventure, this truck is up to the task.

In addition to its impressive engine and transmission, the 2014 Ram 3500 Laramie also comes loaded with a variety of manufacturer options and packages. These include features like a premium sound system, heated and ventilated front seats, a power sunroof, and much more. You'll feel like you're driving a luxury vehicle, even when you're behind the wheel of a tough and rugged pickup truck.

But don't just take our word for it. Come see the 2014 Ram 3500 Laramie for yourself and take it for a test drive. We're confident that once you experience the power, performance, and luxury of this incredible truck, you'll be sold. So why wait? Visit our dealership today and get behind the wheel of your dream pickup truck.



Vehicle History Report : as Of 09/24/2023

CARFAX

Snapshot

2014 RAM LARAMIE



No accidents or damage reported to CARFAX



24 Service history records



At least 1 open recall



2 Previous owners



Personal vehicle



157,821 Last reported odometer reading



FREE CARFAX Report

See the full CARFAX Report for additional information

*carfax Snapshot is a reflection of available information on the date the report was pulled. carfax is constantly being updated with new information and is subject to change at any time.

Our Location :



2014 Ram 3500 Laramie

Addison Autoplex - (469) 677-0905 - View this car on our website at addisonautoplex.com/7209510/ebrochure

Installed Options

Interior

- 115V Auxiliary Power Outlet- 2 Seatback Storage Pockets- 3 12V DC Power Outlets
- Analog Appearance- Cargo Area Concealed Storage- Compass
- Cruise Control w/Steering Wheel Controls- Day-Night Auto-Dimming Rearview Mirror
- Delayed Accessory Power
- Driver And Passenger Visor Vanity Mirrors w/Driver And Passenger Illumination
- Driver Information Center- Driver Seat
- Dual Zone Front Automatic Air Conditioning w/Front Infrared
- Engine Compartment And Pickup Cargo Box Lights - Fade-To-Off Interior Lighting
- Front Cupholder- Front Map Lights
- Full Carpet Floor Covering -inc: Carpet Front And Rear Floor Mats - Full Cloth Headliner
- Garage Door Transmitter
- Gauges -inc: Speedometer, Odometer, Voltmeter, Oil Pressure, Engine Coolant Temp, Tachometer, Oil Temperature, Transmission Fluid Temp, Engine Hour Meter, Trip Odometer and Trip Computer
- HVAC -inc: Underseat Ducts and Console Ducts - Heated Front Seats
- Heated Leather Steering Wheel- High Back Seats- Illuminated Glove Box- Immobilizer
- Instrument Panel Bin, Dashboard Storage, Driver / Passenger And Rear Door Bins and 1st Row Underseat Storage

Option Packages

Factory Installed Packages

ENGINE: 6.7L I6 CUMMINS TURBO DIESEL

-inc: Selective Catalytic Reduction (Urea), 180 Amp Alternator, Cummins Turbo Diesel Badge, Current Generation Engine Controller, Diesel Exhaust Brake, 5.5 Additional Gallons of Diesel, RAM Active Air, GVWR: 12,400 lbs

\$8,160

TRANSMISSION: 6-SPEED 850 TORQUE OUTPUT AISIN

-inc: 3.42 Rear Axle Ratio, Transmission Oil Cooler

\$2,995

CHROME BODYSIDE MOLDING

\$175

CONVENIENCE GROUP

-inc: Rain Sensitive Windshield Wipers, Auto High Beam Headlamp Control

\$395

- Interior Trim -inc: Deluxe Sound Insulation, Simulated Wood/Metal-Look Instrument Panel Insert, Simulated Wood/Metal-Look Door Panel Insert and Chrome/Metal-Look Interior Accents
- Leather Trim 40/20/40 Bench Seat
- Manual Adjustable Front Head Restraints and Manual Adjustable Rear Head Restraints
- Manual Tilt Steering Column- Memory Settings -inc: Driver Seat, Door Mirrors and Audio
- Mini Overhead Console and 3 12V DC Power Outlets- Outside Temp Gauge
- Passenger Seat- Perimeter Alarm
- Power 10-Way Memory Driver & 6-Way Passenger Seats
- Power 1st Row Windows w/Driver And Passenger 1-Touch Up/Down
- Power Door Locks w/Autolock Feature- Power Lumbar Adjust- Power Rear Windows
- Rear 60/40 Split Folding Seat- Rear Center Armrest- Rear Cupholder
- Redundant Digital Speedometer
- Remote Keyless Entry w/Integrated Key Transmitter, Illuminated Entry and Panic Button
- Trip Computer- Urethane Gear Shifter Material- Valet Function- Ventilated Front Seats
- Voice Recorder

Exterior

- Auto On/Off Projector Beam Halogen Headlamps w/Delay-Off
- Black Side Windows Trim and Black Front Windshield Trim
- Cargo Lamp w/High Mount Stop Light- Center Hub- Chrome Door Handles
- Chrome Front Bumper w/2 Tow Hooks- Chrome Grille
- Chrome Power Heated Side Mirrors w/Convex Spotter, Manual Folding and Turn Signal Indicator
- Chrome Rear Step Bumper- Clearcoat Paint- Colored Fender Flares- Deep Tinted Glass
- Front Fog Lamps- Front License Plate Bracket
- Full-Size Spare Tire Stored Underbody w/Crankdown- Fully Galvanized Steel Panels
- Manual Extendable Trailer Style Mirrors- Manual Tailgate/Rear Door Lock
- Perimeter/Approach Lights- Power Rear Window- Regular Box Style- Steel Spare Wheel
- Tailgate Rear Cargo Access- Tires: LT275/70R18E BSW AS
- Variable Intermittent Wipers- Vendor Painted Cargo Box Tracking
- Wheels: 18" x 8" Polished Aluminum

Safety

- 115V Auxiliary Power Outlet- 2 Seatback Storage Pockets- 3 12V DC Power Outlets
- Analog Appearance- Cargo Area Concealed Storage- Compass
- Cruise Control w/Steering Wheel Controls- Day-Night Auto-Dimming Rearview Mirror
- Delayed Accessory Power
- Driver And Passenger Visor Vanity Mirrors w/Driver And Passenger Illumination
- Driver Information Center- Driver Seat
- Dual Zone Front Automatic Air Conditioning w/Front Infrared
- Engine Compartment And Pickup Cargo Box Lights - Fade-To-Off Interior Lighting
- Front Cupholder- Front Map Lights
- Full Carpet Floor Covering -inc: Carpet Front And Rear Floor Mats - Full Cloth Headliner
- Garage Door Transmitter
- Gauges -inc: Speedometer, Odometer, Voltmeter, Oil Pressure, Engine Coolant Temp, Tachometer, Oil Temperature, Transmission Fluid Temp, Engine Hour Meter, Trip Odometer and Trip Computer
- HVAC -inc: Underseat Ducts and Console Ducts - Heated Front Seats
- Heated Leather Steering Wheel- High Back Seats- Illuminated Glove Box- Immobilizer
- Instrument Panel Bin, Dashboard Storage, Driver / Passenger And Rear Door Bins and 1st Row Underseat Storage
- Interior Trim -inc: Deluxe Sound Insulation, Simulated Wood/Metal-Look Instrument Panel Insert, Simulated Wood/Metal-Look Door Panel Insert and Chrome/Metal-Look Interior Accents
- Leather Trim 40/20/40 Bench Seat
- Manual Adjustable Front Head Restraints and Manual Adjustable Rear Head Restraints
- Manual Tilt Steering Column- Memory Settings -inc: Driver Seat, Door Mirrors and Audio
- Mini Overhead Console and 3 12V DC Power Outlets- Outside Temp Gauge
- Passenger Seat- Perimeter Alarm
- Power 10-Way Memory Driver & 6-Way Passenger Seats
- Power 1st Row Windows w/Driver And Passenger 1-Touch Up/Down
- Power Door Locks w/Autolock Feature- Power Lumbar Adjust- Power Rear Windows
- Rear 60/40 Split Folding Seat- Rear Center Armrest- Rear Cupholder
- Redundant Digital Speedometer
- Remote Keyless Entry w/Integrated Key Transmitter, Illuminated Entry and Panic Button
- Trip Computer- Urethane Gear Shifter Material- Valet Function- Ventilated Front Seats
- Voice Recorder

Mechanical

- 160 Amp Alternator- 3.73 Rear Axle Ratio- 31 Gal. Fuel Tank

KEYLESS GO

-inc: Remote Proximity Keyless Entry \$150

POWER ADJUSTABLE PEDALS W/MEMORY

\$150

RADIO: UCONNECT 8.4AN AM/FM/SXM/HD/BT/NAV

-inc: 1-Yr, SIRIUSXM Traffic Service, SIRIUSXM Traffic, 1-Yr, SIRIUSXM Travel Link Service, HD Radio, 1 Yr, Trial (Registration Required), GPS Navigation, SiriusXM Travel Link \$500

REMOTE START SYSTEM

\$200

3.73 REAR AXLE RATIO

\$50

BRIGHT WHITE CLEARCOAT

LT FROST BEIGE/BROWN, LEATHER TRIM 40/20/40 BENCH SEAT

WHEELS: 18" X 8" POLISHED ALUMINUM

Option Packages Total

\$12,775

- 4-Wheel Disc Brakes w/4-Wheel ABS, Front And Rear Vented Discs, Brake Assist and Hill Hold Control
- 4330# Maximum Payload- 730CCA Maintenance-Free Battery w/Run Down Protection
- Anti-Spin Differential Rear Axle- Auto Locking Hubs
- Class V Towing Equipment -inc: Hitch, Brake Controller and Trailer Sway Control
- Electronic Transfer Case- Engine: 5.7L V8 HEMI VVT- Front Anti-Roll Bar
- GVWR: 11,300 lbs- HD Shock Absorbers- Hydraulic Power-Assist Steering
- Multi-Link Front Suspension w/Coil Springs- Part-Time Four-Wheel Drive
- Single Stainless Steel Exhaust- Solid Axle Rear Suspension w/Leaf Springs- Tip Start
- Trailer Wiring Harness
- Transmission w/Driver Selectable Mode, Sequential Shift Control and Oil Cooler
- Transmission: 6-Speed Automatic 66RFE

*Est. payment based on vehicle price (excluding taxes and fees) and associated lender rates for qualified buyers, term length and any associated trade-in equity or down payment from buyer. Contingent upon seller's acceptance of these terms. Terms may vary.

Addison Autoplex
addisonautoplex.com
(469) 677-0905
4103 Billy Mitchell Dr
Addison, TX 75001

© 2023 AutoRevo - All rights reserved. - Powered by AutoRevo