



1995 Chevrolet Corvette Pace Car

Our Price \$0

View this vehicle on our website at wheelsunltd.com

Wheels Unlimited

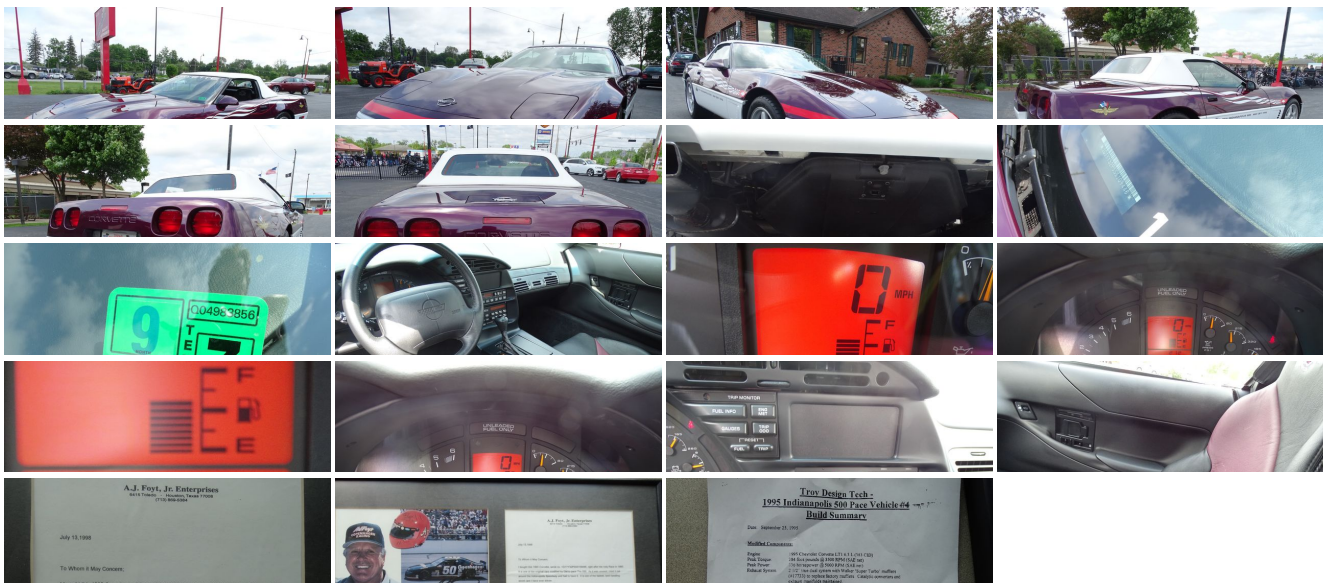
(219) 464-3736

1151 Northland Drive , Valparaiso, Indiana 46385

Photos

Details

Contact



Specifications:

Year:	1995
VIN:	1G1YY32P5S5109446
Make:	Chevrolet
Stock:	11-074
Model/Trim:	Corvette Pace Car
Condition:	Pre-Owned
Body:	Convertible
Exterior:	Dark Purple Upper/White Lower
Engine:	6.3L 383c.i. LT1 V8
Interior:	Leather
Transmission:	4-SPEED ELECTRONICALLY-CONTROLLED AUTOMATIC TRANSMISSION W/OD (STD)
Mileage:	212
Drivetrain:	Rear Wheel Drive

Vehicle Description

Installed Options

Interior

- Air conditioning-inc: R134A refrigerant- Cargo compartment closeout panel
- Center console-inc: coin tray, locking lighted storage compartment, cassette/ CD storage, integral armrest
- Day/night rearview mirror w/reading/ashtray/courtesy lamps
- Dual illuminated covered visor mirrors
- ETR AM/FM stereo w/cassette-inc: seek-scan, digital clock, pwr antenna, extended range speakers
- Electronic liquid-crystal instrumentation w/white analog & digital display w/ switchable English or metric readout
- Electronic speed control w/resume speed- Headlamps-on reminder
- Leather bucket seats w/lateral support & back angle adjustment
- Leather-wrapped sport tilt-wheel steering wheel- Low oil level indicator
- PASS-Key II theft deterrent system - Pwr door locks
- Pwr windows w/driver side express down- Rear window defogger
- Scotchgard fabric protector on floor covering- Side window defoggers
- Storage compartment integral w/door armrest

Exterior

- Acoustic insulation pkg- Base coat/clear coat paint
- Dual electrically adjustable heated outside rearview mirrors - Front cornering lamps
- Front license plate bracket- Full folding roof- Halogen fog lamps
- Intermittent wiper system- Pwr operated retractable halogen headlamps- Solar-ray glass
- Underhood courtesy lamps

Mechanical

- 5.7L (350) SFI V8 engine-inc: aluminum heads, composite valve rocker covers, aluminum intake manifold w/roller valve lifters, outside air induction system
- T155/70D17 compact spare tire- 140 amp alternator
- 17" x 8 1/2" front aluminum wheels - 17" x 9 1/2" rear aluminum wheels
- 2.59 rear axle ratio- 20 gallon fuel tank
- 4-speed electronically controlled automatic transmission w/OD
- 4-wheel anti-lock braking system- Acceleration Slip Regulation system (ASR)
- Brake/transmission shift interlock
- Clamshell opening front end assembly for easy engine access
- DeCarbon shock absorbers- Distributorless opti-spark ignition system
- HD Pwr 4-wheel disc brakes
- Independent front/rear suspension w/transverse fiberglass leaf springs/forged aluminum A-arms
- P255/45ZR17 unidirectional/asymmetric Eagle BL front tires
- P285/40ZR17 unidirectional/asymmetric Eagle BL rear tires- Pwr rack & pinion steering
- Rear wheel drive- Uniframe design body structure w/corrosion resistant coating

Option Packages

Factory Installed Packages

4-SPEED ELECTRONICALLY-CONTROLLED AUTOMATIC TRANSMISSION W/OD (STD)

AUXILIARY REMOTE KEYLESS ENTRY TRANSMITTER
\$45

DELCO/BOSE MUSIC SYSTEM W/CASSETTE, COMPACT DISC-inc: ETR AM/FM stereo, seek-scan, digital clock (REQ: 1SD Preferred Equipment Group)
\$396

LOW TIRE PRESSURE WARNING INDICATOR
\$325

PREFERRED EQUIPMENT GROUP 1-inc: elect air cond, Delco/Bose music system w/cassette, 6-way pwr driver seat *NET*
\$1,333

LEATHER SEAT TRIM (STD)

EXTENDED MOBILITY TIRES-inc: P255/45ZR17 SBR BSW front, P285/40ZR17 SBR BSW rear (REQ: UJ6 Tire Pressure Indicator)
\$70

STANDARD TIRES-inc: P255/45ZR17 SBR BL front, P285/40ZR17 SBR BL rear (STD)

Option Packages Total
\$2,169

Wheels Unlimited

Wheels Unlimited

View this car on our website at wheelsunltd.com/7208464

Website: wheelsunltd.com

Phone: (219) 464-3736

Map: [1151 Morthland Drive, Valparaiso, Indiana 46385](#)

