



2011 BMW M3

Website Price \$29,995

View this vehicle on our website at autoparkdallas.com



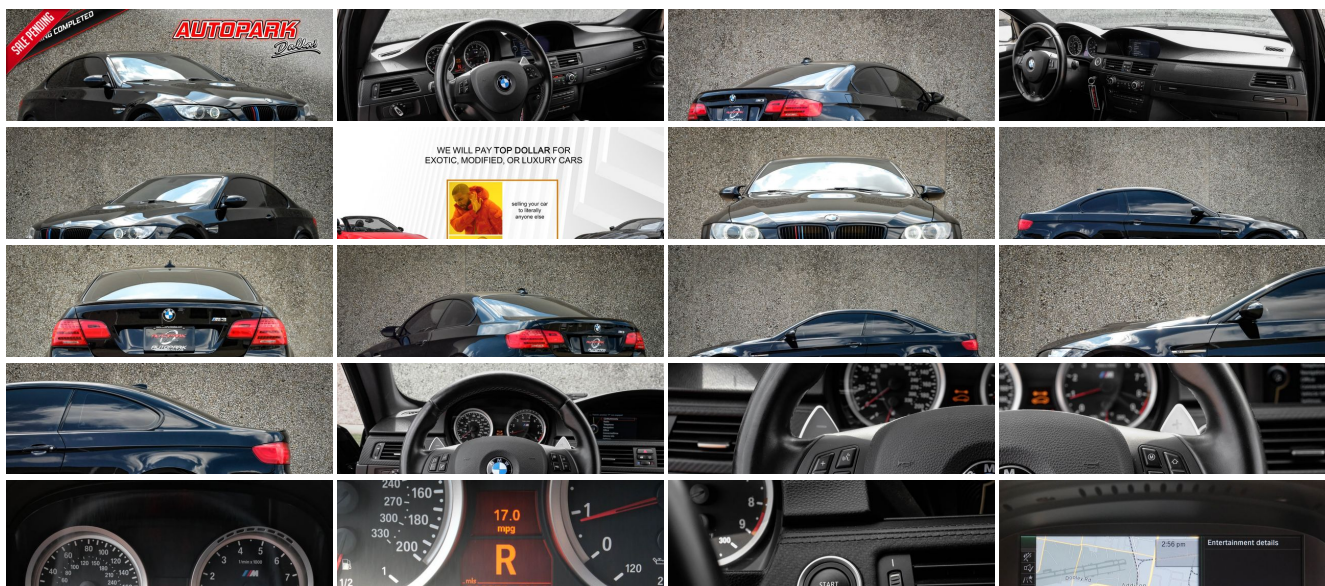
(214) 945-2601

2061 S Stemmons Fwy , Lewisville, TX 75067

Photos

Details

Contact



Specifications:

Year:	2011
VIN:	WBSKG9C55BE646360
Make:	BMW
Stock:	1317-TR
Model/Trim:	M3
Condition:	Pre-Owned
Body:	Coupe
Exterior:	Jet Black
Engine:	4.0-liter 32-valve 414-hp V-8 engine with M Double-VANOS "steplessly" variable valve timing
Interior:	Black Leather
Transmission:	7-SPEED M DOUBLE CLUTCH TRANSMISSION
Mileage:	96,850
Drivetrain:	Rear Wheel Drive
Economy:	City 14 / Highway 20

Vehicle Description

AutoPark Dallas is thrilled to offer you this Black on Black 2011 BMW M3 for sale! The BMW enjoys a well-deserved reputation for bundling outstanding driving dynamics, excellent quality and undeniable prestige into gorgeous piece of metal. There is no denying that everybody knows the signature look of a BMW, but with their performance department designing the M-Series puts this bimmer at a whole other level! The drive, the performance, the thrill are all an experience that NEEDS to be first hand!!! DO! NOT! HESISTATE!!! To stop by to check out this Beautiful example of a BMW M3 parked here in our 16,000 Sq Ft Showroom located in Dallas , Texas amongst our inventory of 100+ other Unique / Modified and Luxury Vehicles!

2011 BMW M3

*** Clean CarFax !***

*** Premium Package 2 !***

Jet Black Exterior

Black Novillo Leather Interior

*** x2 10" JL Audio Subwoofers w/ Custom Housing !***

Hands Free Bluetooth

Navigation w/ Voice Command

Heated Front Row Seats

Push Button Start

Electronic Damping Control

Sport 'Power' Mode

Dual Climate Controls

Power Folding Exterior Mirrors

Dual Climate Controls
Driver Seat Memory
4.0L DOHC 32-Valve V8 Engine
7-Speed M Double Clutch Transmission
Rear Wheel Drive
Professionally Detailed!
Well Maintained!
* Free CarFax Report !*
AND SO MUCH MORE!!!

Financing Is Available!

Check out our Payment Calculator to get an estimate on your monthly payments!

OR

Get pre-approved in no time by filling out a credit application on the 'Finance' section of our website!
Or by Clicking [HERE!](#)

Check out our Google Reviews by Clicking this LINK!

Referrals and Testimonials is what our business is built on!

The team here at AutoPark Dallas, is dedicated to offering a level of customer service not usually found in the automobile industry. Thanks to years of extensive car buying / selling experience, we pursue quality used and new vehicles that are hand-picked from factory sources. Our love for automobiles and dislike of traditional dealership tactics is what motivates us to provide the service we do! The pride we take in continuing this service long after the vehicle has been delivered is what we strive for! Looking forward to making every effort to see that our customer is completely satisfied and a friend for life!

Pre-purchase inspections are always welcomed!

We also offer airport pick-up, competitive financing options, free CarFax Reports, Car Shipping nationwide, Extended Warranty plans, and so much more!

Trade-In(s) are always accepted or sell us your used car (MODIFIED OR NOT)! Please call or text for more information about Trade-Ins or selling your car to us!

(214) 945-2601

Call or Text Anytime!

Se habla Español

WE BUY CARS!

We buy all kinds of cars, Modified or Unmodified!

We're paying top dollar for unique or modified vehicles!

We will **BEAT** your Carmax offer!

□

AUTOPARKDALLAS.COM

Installed Options

Interior

- Anthracite and Black Cloth/Leather upholstery
- 3-spoke, leather-wrapped multi-function M sport steering wheel with audio and (accessory) phone controls, M color stitching and tilt/telescopic adjustment (M Drive button included with multi-function controls with Technology Package option)
- Adjustable front armrest- Anthracite headliner
- Automatic climate control includes micro-filter, automatic air recirculation, left/right temperature control, temperature- and volume-controlled rear outlets, windshield misting sensor, MAX A/C, heat at rest, and recall of individual user settings
- Automatic-dimming inside rear-view mirror- Auxiliary pwr outlet
- BMW Ambiance Lighting front and rear
- Central locking system (leaves gas filler door unlocked) and double-lock feature
- Check Control vehicle monitoring system
- Coded Driveaway Protection (prevents engine start when your key, with constantly changing electronic code, is not used)
- Console valet and cupholders
- Courtesy lights include fade in/fade out, actuation from remote, automatic switch-on when engine is turned off, separately controlled left/right front and rear reading lights, front footwell lighting, and illuminated vanity mirrors
- Cruise Control with column-mounted stalk
- Digital Motor Electronics (DME) with on-board diagnostics
- Door sills with BMW M3 logo- Electric interior trunk release- Folding rear-seat headrests
- Front seatback storage nets- Fully finished trunk
- Keyless entry -inc: remote trunk release
- M-design instrument cluster with titanium-finish-ringed instrument dials and red needles
- Multi-function remote control
- On-board computer with detailed vehicle information including travel range on remaining fuel, external temperature (including freezing temperature warning)
- Power front/rear windows with "one-touch" up/down operation (in M3 coupe, rear windows are stationary and do not include up/down operation)
- Power-adjustable front sport seats with 4-way lumbar support, manually adjustable thigh support and memory system for driver's seat and outside mirrors
- Rear window defogger- Service Interval Indicator with miles-to-service display
- Smoker's pkg -inc: cigarette lighter, ash tray - Split fold-down rear seat
- Tachometer with variable warning zones and oil temperature display
- Titanium Shadow interior trim- Vehicle & Key Memory

Exterior

- Double Spoke (Style 219M) Satin Chrome finish M light alloy wheels 18 x 8.5 front, 18 x 9.5 rear; 245/40 front and 265/40 rear performance tires
- Adaptive Brake Lights- Aluminum hood with powerdome
- Automatic tilt-down of passenger's side-view mirror when vehicle is shifted into reverse gear
- Carbon-fiber roof (not available with moonroof, which requires a steel roof)
- Flared front and rear fenders including wheel arches; vent gills in front fenders with integrated indicator and M3 logo
- Front and rear spoiler- Heated side-view mirrors, windshield washer jets and door locks
- M Mobility System (includes lifetime BMW Roadside Assistance for tire assistance)
- M pwr exterior side-view mirrors in body color with double bridge in black
- M rear apron with diffuser
- Rain-sensing windshield wipers with Automatic headlight control - Shadowline trim
- White turn-signal indicators

Option Packages

Factory Installed Packages

7-SPEED M DOUBLE CLUTCH TRANSMISSION	-inc: Drivelogic	\$2,900
BMW APPS	-inc: smartphone integration	\$250
BMW ASSIST	-inc: Bluetooth, Combox controller	\$750
CARBON LEATHER INTERIOR TRIM		\$500
HEATED FRONT SEATS		\$500
NAVIGATION SYSTEM	-inc: real time traffic info, voice command	\$2,100
PREMIUM PKG	-inc: pwr folding exterior mirrors, universal garage door opener, upgraded interior trim, digital compass mirror, BMW Assist, Bluetooth, upgraded seat trim	\$2,000
PREMIUM PKG 2	-inc: pwr folding exterior mirrors, universal garage door opener, upgraded interior trim, digital compass mirror, BMW Assist, Bluetooth, upgraded seat trim, pwr front seats	\$2,500
JET BLACK		
BLACK, EXTENDED NOVILLO LEATHER SEAT TRIM		\$2,000
Option Packages Total		\$13,500

- Xenon Adaptive low- and high-beam headlights with auto-leveling and Cornering Lights function

Safety

- Anthracite and Black Cloth/Leather upholstery
- 3-spoke, leather-wrapped multi-function M sport steering wheel with audio and (accessory) phone controls, M color stitching and tilt/telescopic adjustment (M Drive button included with multi-function controls with Technology Package option)
- Adjustable front armrest- Anthracite headliner
- Automatic climate control includes micro-filter, automatic air recirculation, left/right temperature control, temperature- and volume-controlled rear outlets, windshield misting sensor, MAX A/C, heat at rest, and recall of individual user settings
- Automatic-dimming inside rear-view mirror- Auxiliary pwr outlet
- BMW Ambiance Lighting front and rear
- Central locking system (leaves gas filler door unlocked) and double-lock feature
- Check Control vehicle monitoring system
- Coded Driveaway Protection (prevents engine start when your key, with constantly changing electronic code, is not used)
- Console valet and cupholders
- Courtesy lights include fade in/fade out, actuation from remote, automatic switch-on when engine is turned off, separately controlled left/right front and rear reading lights, front footwell lighting, and illuminated vanity mirrors
- Cruise Control with column-mounted stalk
- Digital Motor Electronics (DME) with on-board diagnostics
- Door sills with BMW M3 logo- Electric interior trunk release- Folding rear-seat headrests
- Front seatback storage nets- Fully finished trunk
- Keyless entry -inc: remote trunk release
- M-design instrument cluster with titanium-finish-ringed instrument dials and red needles
- Multi-function remote control
- On-board computer with detailed vehicle information including travel range on remaining fuel, external temperature (including freezing temperature warning)
- Power front/rear windows with "one-touch" up/down operation (in M3 coupe, rear windows are stationary and do not include up/down operation)
- Power-adjustable front sport seats with 4-way lumbar support, manually adjustable thigh support and memory system for driver's seat and outside mirrors
- Rear window defogger- Service Interval Indicator with miles-to-service display
- Smoker's pkg -inc: cigarette lighter, ash tray - Split fold-down rear seat
- Tachometer with variable warning zones and oil temperature display
- Titanium Shadow interior trim- Vehicle & Key Memory

Mechanical

- 6-speed manual transmission with additional oil cooler and heavy-duty dual-disc clutch
- 3-way catalytic converter with heated oxygen sensor
- 4-wheel BMW M vacuum-assisted ventilated, cross-drilled compound disc brakes with floating brake rotors
- 4.0-liter 32-valve 414-hp V-8 engine with M Double-VANOS "steplessly" variable valve timing
- 8 individual throttles, electronically controlled (drive-by-wire)
- All Season Traction with Variable M Differential Lock
- Distributorless electronic ignition system- Engine Start/Stop button
- Flat-paneled underbody- Gas-pressurized front struts and rear shock absorbers
- M drive- M quad polished stainless steel exhaust tips
- M suspension with twin-joint spring-strut front axle, subframe, front axle tie-rod and stiffening plate in aluminum, rear axle subframe in steel, track control arm and spring strut in aluminum and lightweight steel construction
- Oil coolant heat exchanger- Rear wheel drive
- Vehicle-speed-sensitive variable-assist power steering (M Servotronic)



View this car on our website at autoparkdallas.com/7208049

Website: autoparkdallas.com

Phone: (214) 945-2601

Map: 2061 S Stemmons Fwy, Lewisville, TX 75067

