



## 2010 HUMMER H3 SUV Luxury

**Website Price \$29,995**

View this vehicle on our website at [autoparkdallas.com](http://autoparkdallas.com)



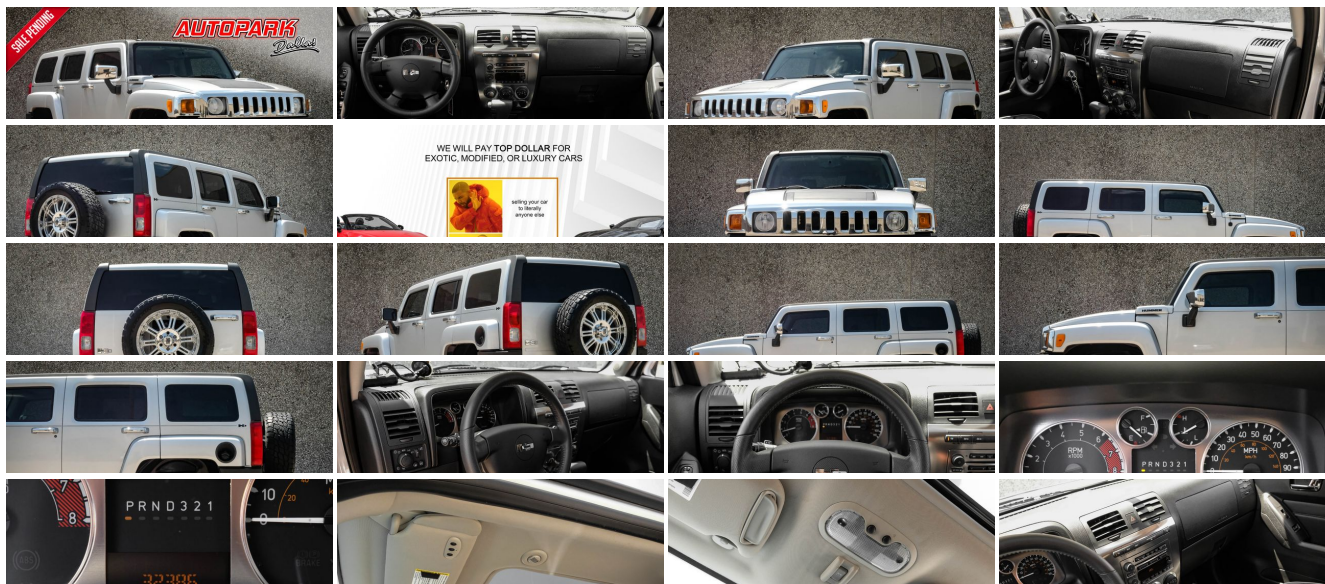
(214) 945-2601

2061 S Stemmons Fwy , Lewisville, TX 75067

Photos

Details

Contact



Specifications:

Year:	2010
VIN:	5GTMNJEEXA8115309
Make:	HUMMER
Stock:	1305
Model/Trim:	H3 SUV Luxury
Condition:	Pre-Owned
Body:	SUV
Exterior:	Silver Stone Metallic
Engine:	3.7L DOHC 5-CYLINDER MFI
Interior:	Ebony Leather
Transmission:	TRANSMISSION, 4-SPEED AUTOMATIC, ELECTRONICALLY CONTROLLED
Mileage:	32,368
Drivetrain:	4 Wheel Drive
Economy:	City 14 / Highway 18

Vehicle Description

Installed Options

Interior

- Door locks, power- Floor mats, carpeted front, oversized
- Floor mats, carpeted rear seat, oversized
- Remote Keyless Entry with 2 transmitters and remote panic button
- Seat adjuster, driver 8-way power with power lumbar control
- Seat adjuster, front passenger 8-way power with power lumbar control (Included with (YC3) Uplevel Decor.)
- Seats, front bucket includes driver power lumbar controls, adjustable outboard head restraints and map pockets on seatbacks
- Seats, heated driver and front passenger (Included with (YC3) Uplevel Decor.)
- Steering wheel, leather-wrapped
- Uplevel Decor includes (\*\*3) leather with complementary piping seat and interior trim, first row and second row leather-appointed seats with (AG2) 8-way power front passenger seat adjuster, (KA1) heated driver and front passenger seats and (NP5) leather-wrapped steering wheel
- Visors, driver and front passenger includes vanity mirror on passenger side
- Air conditioning, single-zone manual
- Assist handles, 5 total 1 A-pillar mounted for front passenger, 2 B-pillar and 2 overhead-mounted for outboard rear seats
- Cargo cover, fabric- Console, floor includes removable tray
- Cruise control, electronic with set and resume speed - Cup holders, 2 front and 1 rear
- Defogger, rear-window- Floor covering, carpet
- Floor mat, carpeted cargo area, oversized- Glovebox, passenger-side
- Lighting, interior with front and interior dome, reading, cargo, instrument panel courtesy, door switches and illuminated entry
- Mirror, inside rearview auto-dimming with 8-point compass and outside temperature display
- Owners publication (Retail orders only)
- Power outlets, 3 auxiliary with covers, 12-volt, includes 2 front and 1 in the rear cargo area
- Retained accessory power- Seats, rear 60/40 split-folding
- Theft-deterrent system, vehicle, PASSlock II- Windows, power with driver Express-Down

Exterior

- Tires, P265/75R16 all-terrain, blackwall
- Wheels, 5 - 16" x 7.5" (40.6 cm x 19.1 cm) aluminum
- Body, driver-side-hinged swing gate with fixed glass
- Bumpers, front and rear steel (not jackable)- Fog lamps, front, halogen
- Glass, Solar-Ray deep-tinted (all windows except light-tinted glass on windshield, driver- and front passenger-side glass)
- Grille, chrome 7-slot
- Headlamps, dual composite halogen with automatic exterior lamp control

Option Packages

Factory Installed Packages

ENGINE, 3.7L DOHC 5-CYLINDER MFI  
(239 hp [178.2 kW] @ 5800 rpm, 241 lb-ft of torque [325.3 N-m] @ 4600 rpm)

TRANSMISSION, 4-SPEED AUTOMATIC, ELECTRONICALLY CONTROLLED  
with overdrive, includes leather-wrapped shift handle, must specify

CHROME APPEARANCE PACKAGE  
includes exterior door handles on Black cups and mirror caps

TRANSFER CASE, 4.03:1  
2-speed, button-actuated full-time 4WD

SILVER STONE METALLIC

LUXURY PREFERRED EQUIPMENT GROUP  
includes Standard Equipment

- Luggage rack side rails, roof-mounted- Mirrors, outside power-adjustable, manual-folding
- Paint, solid- Tire, full-size spare, rear swing-gate mounted - Wiper, rear wiper/washer
- Wipers, front intermittent, variable, wiper/washer

## Safety

- Door locks, power- Floor mats, carpeted front, oversized
- Floor mats, carpeted rear seat, oversized
- Remote Keyless Entry with 2 transmitters and remote panic button
- Seat adjuster, driver 8-way power with power lumbar control
- Seat adjuster, front passenger 8-way power with power lumbar control (Included with (YC3) Uplevel Decor.)
- Seats, front bucket includes driver power lumbar controls, adjustable outboard head restraints and map pockets on seatbacks
- Seats, heated driver and front passenger (Included with (YC3) Uplevel Decor.)
- Steering wheel, leather-wrapped
- Uplevel Decor includes (\*\*3) leather with complementary piping seat and interior trim, first row and second row leather-appointed seats with (AG2) 8-way power front passenger seat adjuster, (KA1) heated driver and front passenger seats and (NP5) leather-wrapped steering wheel
- Visors, driver and front passenger includes vanity mirror on passenger side
- Air conditioning, single-zone manual
- Assist handles, 5 total 1 A-pillar mounted for front passenger, 2 B-pillar and 2 overhead-mounted for outboard rear seats
- Cargo cover, fabric- Console, floor includes removable tray
- Cruise control, electronic with set and resume speed - Cup holders, 2 front and 1 rear
- Defogger, rear-window- Floor covering, carpet
- Floor mat, carpeted cargo area, oversized- Glovebox, passenger-side
- Lighting, interior with front and interior dome, reading, cargo, instrument panel courtesy, door switches and illuminated entry
- Mirror, inside rearview auto-dimming with 8-point compass and outside temperature display
- Owners publication (Retail orders only)
- Power outlets, 3 auxiliary with covers, 12-volt, includes 2 front and 1 in the rear cargo area
- Retained accessory power- Seats, rear 60/40 split-folding
- Theft-deterrent system, vehicle, PASSlock II- Windows, power with driver Express-Down

## Mechanical

- Alternator, 125 amps
- Battery, heavy-duty 590 cold-cranking amps, maintenance-free with rundown protection
- Brakes, 4-wheel antilock, 4-wheel disc with a unique calibration for 4Lo
- Engine, 3.7L DOHC 5-cylinder MFI (239 hp [178.2 kW] @ 5800 rpm, 241 lb-ft of torque [325.3 N-m] @ 4600 rpm) (Not SAE certified.)
- Four wheel drive- GVWR, 6001 lbs. (2722 kg)- Rear axle, 4.56 ratio
- Recovery hooks, 2 front and 1 rear
- Skid Plate Package includes skid plates for front and steering/suspension, transfer case and fuel tank
- Steering, power assisted, rack-and-pinion
- Suspension, front, independent, heavy-duty with torsion bar
- Suspension, rear semi-floating axle with 2-stage multi-leaf springs
- Transfer case, 2.64:1 2-speed, button-actuated full-time 4WD
- Transmission, 4-speed automatic, electronically controlled with overdrive, includes leather-wrapped shift handle, must specify



Auto Park Dallas

View this car on our website at [autoparkdallas.com/7208046](http://autoparkdallas.com/7208046)

Website: [autoparkdallas.com](http://autoparkdallas.com)

Phone: (214) 945-2601

Map: [2061 S Stemmons Fwy, Lewisville, TX 75067](#)

