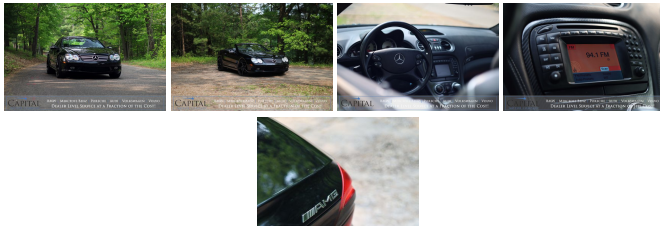


2004 Mercedes-Benz SL55 AMG Roadster w/Supercharged V8, Power Hardtop, Nav, Heated Seats, BOSE Audio & 20" Rims

View this car on our website at capitalmotorcompany.com/7207318/ebrochure



Your Price **\$24,950**

Retail Value **\$27,562**

Specifications:

Year:	2004
VIN:	WDBSK74F54F075398
Make:	Mercedes-Benz
Stock:	5870
Model/Trim:	SL55 AMG Roadster w/Supercharged V8, Power Hardtop, Nav, Heated Seats, BOSE Audio & 20" Rims
Condition:	Pre-Owned
Body:	Convertible
Exterior:	Black
Engine:	Supercharged 5.5-Liter V8
Interior:	Charcoal/Charcoal Leather
Transmission:	5-Speed AMG Automatic
Mileage:	70,842
Drivetrain:	Rear Wheel Drive
Economy:	City 14 / Highway 21

We have for sale an amazing 2004 Mercedes-Benz SL55 AMG Hardtop Convertible Roadster that offers a phenomenal combination of performance and luxury making it an absolute blast to drive! This Mercedes has been very well cared for! This car gets a ton of compliments. It sits on two-tone 20-inch black with machined accent wheels that gives the car an incredible stance! If you are looking for an executive-level "Grand Touring" convertible that offers the power of a V8 and the comfort of luxury car, this SL55 AMG is the perfect choice for you and we know that if you like how it looks in the photos, you will fall in love when you come to drive it!

- 493-Horsepower Supercharged 5.5-Liter V8 Engine and 5-Speed AMG Automatic Transmission with Sport/Manual Shift Mode
- AMG Enhanced Active Body Control (ABC) continuously controls the suspension to provide the highest level of comfort without sacrificing performance and sporty handling
- Driver Selectable Suspension Height allows you to

quickly raise the vehicle's ride height to enter a steep driveway without scraping the front bumper which is very common on exotic and sports cars that have low factory ride height

- 20-Inch 5-Spoke Wheels finished in Gloss Black with Machined Accents
- Power Retractable Hard Top can raise or lower the top in seconds and provides a quiet, comfortable drive with the top up!
- Navigation System with Turn-by-Turn Directions
- BOSE Premium Audio
 - Satellite Radio
 - AM/FM Radio
 - CD/USB/AUX Music Inputs
- Power Front Seats with Driver's Seat Memory
- Keyless GO Push-Button Engine Start
- Xenon HID Head Lights
- Dual-Zone Automatic Climate Controls

To make sure this Mercedes-Benz SL55 AMG Roadster runs and drives perfectly, it has been fully inspected and certified to be sold. The inspection process is very thorough and all of the vehicle's systems, fluids, brakes, tires, suspension, engine and drivetrain are gone through so there are no surprises! If you have any questions or are considering trading in your current vehicle, please call anytime at (715) 833-2020.

2004 Mercedes-Benz SL55 AMG Roadster w/Supercharged V8, Power Hardtop, Nav, Heated Seats, BOSE Audio & 20" Rims
Capital Motor Company - (715) 833-2020 - View this car on our website at capitalmotorcompany.com/7207318/ebrochure

Our Location :



2004 Mercedes-Benz SL55 AMG Roadster w/Supercharged V8, Power Hardtop, Nav, Heated Seats, BOSE Audio & 20" Rims

Installed Options

Interior

- 12-way pwr heated sport seats w/3-position memory, pneumatically adjustable lumbar support
- 4-way pwr tilt/telescoping steering column w/memory
- AMG leather-trimmed sport steering wheel-inc: raised thumbgrips, fingertip shift controls, audio/multifunction display controls
- Alcantara visors w/dual illuminated vanity mirrors- Aluminum trim on console & doors
- Anti-theft alarm system w/tow-away protection
- Audible reminders-inc: release parking brake, headlights on, remove key from ignition
- Auto-dimming rearview mirror w/memory
- Automatic dual-zone climate control-inc: dust/pollen filters, sun/smog sensors, tunnel mode w/one touch closing of all windows, REST mode w/engine heat recirculation feature or cabin ventilation, seat-belt sensors (allows climate control to focus first on occupied seats)
- Automatic low-intensity environmental comfort lighting-inc: center console, door handles, footwells
- COMAND cockpit management/data system-inc: navigation system, AM/FM stereo/weatherband radio, in-dash single CD-player/CD-ROM, CD-changer controls, 5" color LCD in-dash screen
- Carpeted shelf behind seats w/retractable luggage straps
- Center console w/illuminated climate controlled storage, armrest lid
- Courtesy lamps w/fade out time- Cruise control- Driver-programmable easy-exit feature
- Dual enclosed storage compartments beneath luggage shelf
- Dual multifunction displays in speedometer/tachometer faces-inc: trip computer, exterior temp gauge, Flexible Service System, oil level check, digital speedometer, reminder/malfunction messages, driver-programmable settings, cruise control
- Dual reading lamps- Dual retractable cup holders
- Dynamic multicontour seatbacks w/pneumatic adjustable side bolsters/shoulder supports/triple lumbar support, massage feature
- Easy-access courtesy feature w/obstruction sensor
- Electronic analog speedometer, tachometer, fuel level/coolant temp gauges
- Enclosed door pockets- Entrance lamps in doors
- Fiber-optic AM/FM stereo/weatherband radio w/CD-player/CD-changer-inc: 8- speaker Bose sound system w/4" x 6" woofer & Bose AudioPilot
- Front passenger footwell parcel net
- Hand-fitted AMG-designed perforated leather seating w/premium leather dash, console, doors, armrests, roll bar, rear cabin panels
- Illuminated/climate controlled glove-box- In-dash CD-ROM navigation system
- Integrated 3-button universal garage door controller- Leather-trimmed shift knob
- Pneumatic trunk closing assist- Pwr door locks w/central locking system
- Pwr windows w/1-touch express up/down for all windows
- Rear window defroster w/auto-shutoff based on time/driving speed/exterior temp
- SmartKey infrared-remote-inc: opening trunk, opening/closing windows, panic alarm, fuel filler door, lock/unlock all doors or drivers, raising/lowering hardtop
- SmartKey system-inc: remote central locking system, anti-theft engine immobilizer, driver-programmable user-recognition features, drive away automatic locking,
- Stainless-steel door sill trim w/AMG insignia
- Tele Aid global positioning system (GPS) satellite system w/concierge service
- Velour carpeting & AMG floor mats
- Warning lights/messages-inc: open door, exterior lamp failure, low fuel/engine oil/coolant/washer fluid

Exterior

- AMG sculpted front air dam w/mesh air intakes, side skirts & rear apron w/mesh air diffuser
- Attachable mesh wind deflector
- Dual aero-blade windshield wipers w/infrared rain sensor, heated washer system
- Dual heated pwr mirrors-inc: memory, auto-dimming driver mirror, RH mirror reverse tilt down
- Electrohydraulic retractable aluminum hardtop- Halogen front fog lamps
- Programmable daytime running lamps- Red/smoke-color rear lamp covers
- Single rear fog lamp- Titanium grey grille w/(4) ribs
- Touch turn signals (flashes three times w/one touch)
- Xenon high intensity discharge low-beam headlamps-inc: polycarbonate lenses, automatic level control, halogen high-beams, heated headlamp washers, light- sensing auto-on headlamps, automatic lamp substitution

Safety

- 12-way pwr heated sport seats w/3-position memory, pneumatically adjustable lumbar support

- 4-way pwr tilt/telescoping steering column w/memory
- AMG leather-trimmed sport steering wheel-inc: raised thumbgrips, fingertip shift controls, audio/multifunction display controls
- Alcantara visors w/dual illuminated vanity mirrors- Aluminum trim on console & doors
- Anti-theft alarm system w/tow-away protection
- Audible reminders-inc: release parking brake, headlights on, remove key from ignition
- Auto-dimming rearview mirror w/memory
- Automatic dual-zone climate control-inc: dust/pollen filters, sun/smog sensors, tunnel mode w/one touch closing of all windows, REST mode w/engine heat recirculation feature or cabin ventilation, seat-belt sensors (allows climate control to focus first on occupied seats)
- Automatic low-intensity environmental comfort lighting-inc: center console, door handles, footwells
- COMAND cockpit management/data system-inc: navigation system, AM/FM stereo/ weatherband radio, in-dash single CD-player/CD-ROM, CD-changer controls, 5" color LCD in-dash screen
- Carpeted shelf behind seats w/retractable luggage straps
- Center console w/illuminated climate controlled storage, armrest lid
- Courtesy lamps w/fade out time- Cruise control- Driver-programmable easy-exit feature
- Dual enclosed storage compartments beneath luggage shelf
- Dual multifunction displays in speedometer/tachometer faces-inc: trip computer, exterior temp gauge, Flexible Service System, oil level check, digital speedometer, reminder/malfunction messages, driver-programmable settings, cruise control
- Dual reading lamps- Dual retractable cup holders
- Dynamic multicontour seatbacks w/pneumatic adjustable side bolsters/shoulder supports/triple lumbar support, massage feature
- Easy-access courtesy feature w/obstruction sensor
- Electronic analog speedometer, tachometer, fuel level/coolant temp gauges
- Enclosed door pockets- Entrance lamps in doors
- Fiber-optic AM/FM stereo/weatherband radio w/CD-player/CD-changer-inc: 8- speaker Bose sound system w/4" x 6" woofer & Bose AudioPilot
- Front passenger footwell parcel net
- Hand-fitted AMG-designed perforated leather seating w/premium leather dash, console, doors, armrests, roll bar, rear cabin panels
- Illuminated/climate controlled glove-box- In-dash CD-ROM navigation system
- Integrated 3-button universal garage door controller- Leather-trimmed shift knob
- Pneumatic trunk closing assist- Pwr door locks w/central locking system
- Pwr windows w/1-touch express up/down for all windows
- Rear window defroster w/auto-shutoff based on time/driving speed/exterior temp
- SmartKey infrared-remote-inc: opening trunk, opening/closing windows, panic alarm, fuel filler door, lock/unlock all doors or drivers, raising/lowering hardtop
- SmartKey system-inc: remote central locking system, anti-theft engine immobilizer, driver-programmable user-recognition features, drive away automatic locking,
- Stainless-steel door sill trim w/AMG insignia
- Tele Aid global positioning system (GPS) satellite system w/concierge service
- Velour carpeting & AMG floor mats
- Warning lights/messages-inc: open door, exterior lamp failure, low fuel/engine oil/coolant/washer fluid

Mechanical

- 18" x 8.5" AMG ultrathin-spoke monoblock alloy front wheels
- 18" x 9.5" AMG ultrathin-spoke monoblock alloy rear wheels
- 4-piston AMG perforated/internally ventilated rear disc brakes
- 5-speed automatic AMG driver-adaptive transmission-inc: touch shift, optimum gear programming, comfort mode, AMG SpeedShift, fingertip manual mode
- 5.5L SOHC SMPI AMG supercharged 24-valve V8 engine
- 8-piston AMG perforated/internally ventilated front disc brakes
- AMG enhanced Active Body Control (ABC)-inc: coil spring & electronically controlled hydraulic cylinder w/shock absorber at each wheel, sports mode, automatic 4-wheel level control, driver-selectable ride-height control, automatic speed-sensitive lowering
- Anti-lock brake system (ABS) w/brake assist system- Automatic slip control (ASR)
- Electronic Stability Program (ESP)
- Independent 4-link front/5-arm multilink rear suspension
- P255/40YR18 high-performance front tires- P285/35YR18 high-performance rear tires
- Quad polished stainless-steel exhaust tips
- Rack & pinion vehicle-speed-sensitive pwr steering- Rear wheel drive
- Sensotronic brake control-inc: soft stop, automatic brake drying, predictive brake priming
- Tirefit puncture sealant & portable electric air compressor

Option Packages

Factory Installed Packages

ACTIVE VENTILATED SEATS
\$1,220

BI-XENON HEADLAMPS
\$750

KEYLESS GO
\$1,040

NAVIGATION CD COLLECTION
\$150

Option Packages Total
\$3,160

Tax, title, license and dealer fees extra. Prices are subject to change without notice. All incentives include special APR and are subject to change without notice and are available to qualified credit according to management or lending institution guidelines. It is the customer's responsibility to verify options, features and details in description for accuracy.



capitalmotorcompany.com

(715) 833-2020

2833 Alpine Rd

Eau Claire, WI 54703

© 2023 AutoRevo - All rights reserved. - Powered by AutoRevo