

2020 GMC Sierra 1500 AT4

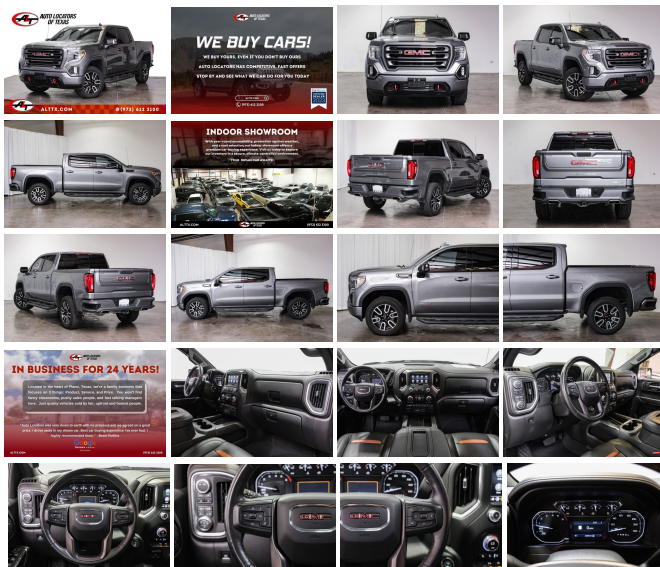
View this car on our website at consignmyvehicle.com/7207203/ebrochure



Our Price **\$47,483**

Specifications:

Year:	2020
VIN:	3GTP9EEL1LG218484
Make:	GMC
Stock:	4246
Model/Trim:	Sierra 1500 AT4
Condition:	Pre-Owned
Body:	Pickup Truck
Exterior:	Dark Sky Metallic
Engine:	ENGINE, 6.2L ECOTEC3 V8
Interior:	Jet Black with Kalahari accents Leather
Transmission:	Automatic
Mileage:	62,265
Drivetrain:	4 Wheel Drive
Economy:	City 15 / Highway 19



2020 GMC SIERRA AT4 4X4 V8 6.2 CREW CAB Financing Available
62,000 MILES NAVIGATION POWER SUNROOF RUNNING BOARDS
NON SMOKER CARFAX CERTIFIED vehicle APPLE CAR PLAY
HEATED SEATS AC COOLED Factory navigation 20 INCH RIMS Side
blind spot monitors Upgraded BOSE stereo RUNNING BOARDS Push
button start Tow package Keyless entry with alarm Back up camera
Bluetooth SITTING ON BRAND NEW TIRES *** After 25 years in
business, we've streamlined the buying process to be completely
hassle and stress free. Why wait? We can have you in and out in as
little as 45 minutes from the time you step into the dealership to the time
you drive away in your new vehicle. Our customers' great reviews have
a common theme, great prices, quality vehicles and an efficient no
hassle environment. Just look on Yelp and Google to read what our
10,000 plus happy customers are saying about Auto Locators of Texas!
We pride ourselves on our friendly, no-pressure approach to selling
vehicles. We offer a wide selection of the highest quality used cars,
trucks, and SUV's. Our finance department works hard to find every
customer the best deal. Trade-ins are always welcome so we can
answer your question of "what is my trade worth". We offer a wide
variety of services from detailing, ding repair, body shop, service, and
extended service contracts. Please take a look at our website at
<https://www.alttx.com>. We hope to see you soon! WE HOPE TO SEE
YOU SOON!

Vehicle History Report : as Of 04/25/2024



Snapshot

2020 GMC SIERRA 1500 AT4



No accidents or damage reported to CARFAX



22 Service history records



3 Previous owners



Personal vehicle



Last owned in Texas



62,917 Last reported odometer reading



FREE CARFAX Report

See the full CARFAX Report for additional information

*carfax Snapshot is a reflection of available information on the date the report was pulled. carfax is constantly being updated with new information and is subject to change at any time.

Our Location :



2020 GMC Sierra 1500 AT4

Consign My Vehicle - 972-612-3100 - View this car on our website at consignmyvehicle.com/7207203/ebrochure

Installed Options

Interior

- Seats, front bucket with center console
- Seating, heated driver and front outboard passenger
- Driver memory recalls driver "presets" for power driver seat and outside mirrors
- Seats, ventilated driver and front passenger
- Windows, power front, drivers express up/down
- Window, power front, passenger express up/down- Windows, power rear, express down
- Door locks, power- Keyless Open and Start- Cruise control, steering wheel-mounted
- USB ports, 2 (first row) located on instrument panel
- USB Ports (Inside Console with bucket seats), 2 also includes 1 SD card reader and auxiliary jack
- Power outlet, front auxiliary, 12-volt- Power outlet, rear auxiliary, 12-volt
- Defogger, rear-window electric- Mirror, inside rearview auto-dimming
- Seat adjuster, driver 10-way power including lumbar
- Seat adjuster, passenger 10-way power including lumbar
- Seat, Up-level Rear with Storage Package, 60/40 folding bench for Crew Cab models, includes full-length bench seat, seatback storage on left and right side, center fold out armrest with 2 cupholders, full cab width under-seat storage, (includes child seat top tether anchor)
- Seats, heated second row outboard seats (Requires a Crew Cab model.)

Option Packages

Factory Installed Packages

ENGINE, 6.2L ECOTEC3 V8
(420 hp [313 kW] @ 5600 rpm, 460 lb-ft of torque [624 Nm] @ 4100 rpm); featuring all-new Dynamic Fuel Management that enables the engine to operate in 17 different patterns between 2 and 8 cylinders, depending on demand, to optimize power delivery and efficiency

Option Packages Total **\$2,495**

- Center Console, floor-mounted with cup holders, cell phone storage, power cord management, hanging file folder capability
- Floor covering, color-keyed carpeting
- LPO, All-weather floor liners, 1st and 2nd rows (includes AT4 logo)
- Steering column, manual Tilt-Wheel and telescoping- Steering wheel, leather-wrapped
- Steering wheel, heated
- Instrument cluster, 6-gauge cluster featuring speedometer, fuel level, engine temperature, tachometer, voltage and oil pressure
- Driver Information Center, 4.2" diagonal color display includes driver personalization
- In-vehicle Trailing App, System includes checklist, trailer maintenance reminders, trailer security alerts, trailer mileage, tow/haul reminder and trailer electrical diagnostics
- Compass, located in instrument cluster
- Exterior Temperature Display, located in radio display - Brake lining wear indicator
- Remote vehicle starter system- Theft-deterrent system, unauthorized entry
- Steering column, lock control, electrical
- Power outlet, instrument panel, 120-volt (400 watts shared with (KC9) bed mounted power outlet)
- USB ports, dual, charge-only (2nd row)
- Power outlet, bed mounted, 120-volt (400 watts shared with (KI4) instrument panel mounted power outlet)
- Air conditioning, dual-zone automatic climate control - Air vents, rear
- Assist handles front A-pillar mounted for driver and passenger, rear B-pillar mounted
- GMC Connected Access capable (Subject to terms. See onstar.com or dealer for details.)

Exterior

- Wheels, 18" x 8.5" (45.7 cm x 21.6 cm) machined aluminum with Dark Grey accents
- Tires, 265/65R18SL all-terrain, blackwall- Tire, spare 265/70R17SL all-season, blackwall
- Headlamps, LED reflector (high intensity) with LED turn signals and LED signature Daytime Running Lamps
- Mirrors, outside heated power-adjustable, power-folding and driver-side auto-dimming puddle lamps, side perimeter lighting and memory
- Bed Liner, Spray-on Pickup bedliner with GMC logo (does not include spray-on liner on tailgate due to Black composite inner panel) (AT4 logo replaces GMC logo. Deleted with (PCP) AT4 CarbonPro Edition. Double Cab and Crew Cab models are available with Ship Thru codes (VCO), (VDT), (VYC) or (VYS).)
- Wheel, 17" x 8" (43.2 cm x 20.3 cm) full-size, steel spare - Wheelhouse liners, rear
- Tire carrier lock keyed cylinder lock that utilizes same key as ignition and door
- Bumper, front, body-color lower (Front bumper color will be high gloss black.)
- Bumper, rear body-color with corner steps- CornerStep, rear bumper
- Grille (Body-color surround with high gloss Black mesh and Black chrome inserts. With (PCP) AT4 CarbonPro Edition the grille will have a unique grille surround with Black Chrome finish.)
- Fog lamps, LED- Taillamps, LED signature taillight with LED stop and reverse light
- Mirror caps, high gloss Black- Glass, deep-tinted
- Lamps, cargo area, cab mounted integrated with center high mount stop lamp, with switch in bank on left side of steering wheel.
- LED Cargo Area Lighting located in cargo box activated with switch on center switch bank or key fob
- Tailgate, GMC MultiPro Tailgate with six functional load/access features
- Tailgate, gate function manual with EZ Lift includes power lock and release, includes hitch area light
- Tailgate and bed rail protection caps, top - Door handles, body-color

Safety

- Seats, front bucket with center console
- Seating, heated driver and front outboard passenger
- Driver memory recalls driver "presets" for power driver seat and outside mirrors
- Seats, ventilated driver and front passenger
- Windows, power front, drivers express up/down
- Window, power front, passenger express up/down- Windows, power rear, express down
- Door locks, power- Keyless Open and Start- Cruise control, steering wheel-mounted
- USB ports, 2 (first row) located on instrument panel
- USB Ports (Inside Console with bucket seats), 2 also includes 1 SD card reader and auxiliary jack
- Power outlet, front auxiliary, 12-volt- Power outlet, rear auxiliary, 12-volt
- Defogger, rear-window electric- Mirror, inside rearview auto-dimming
- Seat adjuster, driver 10-way power including lumbar
- Seat adjuster, passenger 10-way power including lumbar
- Seat, Up-level Rear with Storage Package, 60/40 folding bench for Crew Cab models, includes full-length bench seat, seatback storage on left and right side, center fold out armrest with 2 cupholders, full cab width under-seat storage, (includes child seat top tether anchor)
- Seats, heated second row outboard seats (Requires a Crew Cab model.)
- Center Console, floor-mounted with cup holders, cell phone storage, power cord management, hanging file folder capability

- Floor covering, color-keyed carpeting
- LPO, All-weather floor liners, 1st and 2nd rows (includes AT4 logo)
- Steering column, manual Tilt-Wheel and telescoping- Steering wheel, leather-wrapped
- Steering wheel, heated
- Instrument cluster, 6-gauge cluster featuring speedometer, fuel level, engine temperature, tachometer, voltage and oil pressure
- Driver Information Center, 4.2" diagonal color display includes driver personalization
- In-vehicle Trailing App, System includes checklist, trailer maintenance reminders, trailer security alerts, trailer mileage, tow/haul reminder and trailer electrical diagnostics
- Compass, located in instrument cluster
- Exterior Temperature Display, located in radio display - Brake lining wear indicator
- Remote vehicle starter system- Theft-deterrent system, unauthorized entry
- Steering column, lock control, electrical
- Power outlet, instrument panel, 120-volt (400 watts shared with (KC9) bed mounted power outlet)
- USB ports, dual, charge-only (2nd row)
- Power outlet, bed mounted, 120-volt (400 watts shared with (K14) instrument panel mounted power outlet)
- Air conditioning, dual-zone automatic climate control- Air vents, rear
- Assist handles front A-pillar mounted for driver and passenger, rear B-pillar mounted
- GMC Connected Access capable (Subject to terms. See onstar.com or dealer for details.)

Mechanical

- Engine, 5.3L EcoTec3 V8 (355 hp [265 kW] @ 5600 rpm, 383 lb-ft of torque [518 Nm] @ 4100 rpm); featuring all-new Dynamic Fuel Management that enables the engine to operate in 17 different patterns between 2 and 8 cylinders, depending on demand, to optimize power delivery and efficiency
- Transmission, 10-speed automatic, electronically controlled with overdrive and tow/haul mode. Includes Cruise Grade Braking and Powertrain Grade Braking (Available on models equipped with (L84) 5.3L EcoTec3 V8 engine. Included and only available with (L87) 6.2L EcoTec3 V8 engine or (LM2) Duramax 3.0L Turbo-Diesel I6 engine.)
- Rear axle, 3.23 ratio- Pickup bed
- GVWR, 7000 lbs. (3175 kg) (Requires Crew Cab model with (L84) 5.3L EcoTec3 V8 engine or (L87) 6.2L EcoTec3 V8 engine. Requires Double Cab model with (LM2) Duramax 3.0L Turbo-Diesel I6 engine.)
- Air filter, high-capacity- Automatic Stop/Start- Hill Descent Control
- Differential, heavy-duty locking rear
- Transfer case, two-speed, electronic Autotrac with push button control (4WD models only)
- Suspension, Off-Road with 2" factory installed lift and monotube shocks - Four wheel drive
- Cooling, external engine oil cooler (Not available with (LM2) Duramax 3.0L Turbo-Diesel I6 engine.)
- Cooling, auxiliary external transmission oil cooler (Not available with (LM2) Duramax 3.0L Turbo-Diesel I6 engine.)
- Alternator, 170 amps (Included and only available with (L84) 5.3L EcoTec3 V8 engine or (L87) 6.2L EcoTec3 V8 engine. Not available with (LM2) Duramax 3.0L Turbo-Diesel I6 engine.)
- Battery, heavy-duty 730 cold-cranking amps/80 Amp-hr, maintenance-free with rundown protection and retained accessory power (Included and only available with (L84) 5.3L EcoTec3 V8 engine, (L3B) 2.7L Turbo engine and (L87) 6.2L EcoTec3 V8 engine.)
- Frame, fully-boxed, hydroformed front section- Trailer brake controller, integrated
- Recovery hooks, Red- Skid Plates
- Cargo tie downs (12), fixed, rated at 500 lbs per corner
- Steering, Electric Power Steering (EPS) assist, rack-and-pinion
- Brakes, 4-wheel antilock, 4-wheel disc with DURALIFE rotors- Capless Fuel Fill
- Exhaust, dual with premium tips (With (PCP) AT4 CarbonPro Edition the exhaust tips will be black.)
- Exhaust, aluminized stainless-steel muffler and tailpipe

Listed prices do not include Tax, Title and License. The pricing, equipment and miles shown is believed to be accurate, but we do not warranty or guarantee such accuracy. Vehicle information is based off standard equipment and may vary from vehicle to vehicle. Please call or email for complete vehicle specific information.

Consign My Vehicle
consignmyvehicle.com
 972-612-3100

4460 Tradition Trail
 Plano, TX 75093

© 2024 AutoRevo - All rights reserved. - Powered by AutoRevo