

# 2018 Jeep Grand Cherokee Laredo E

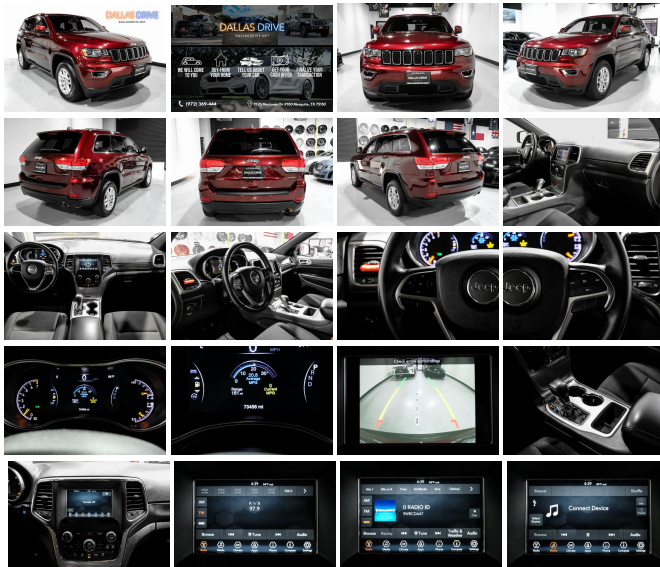
View this car on our website at [dallasdrive.net/7206365/ebrochure](http://dallasdrive.net/7206365/ebrochure)



Price **\$22,349**

## Specifications:

<b>Year:</b>	2018
<b>VIN:</b>	1C4RJEA61JC277513
<b>Make:</b>	Jeep
<b>Stock:</b>	277513
<b>Model/Trim:</b>	Grand Cherokee Laredo E
<b>Condition:</b>	Pre-Owned
<b>Body:</b>	SUV
<b>Exterior:</b>	Velvet Red Pearlcoat
<b>Engine:</b>	ENGINE: 3.6L V6 24V VVT UPG I W/ESS
<b>Interior:</b>	Black Cloth
<b>Transmission:</b>	Automatic w/OD
<b>Mileage:</b>	73,456
<b>Drivetrain:</b>	Rear Wheel Drive
<b>Economy:</b>	City 19 / Highway 26



Are you in the market for a reliable and stylish SUV that can handle any adventure you throw at it? Look no further than this 2018 Jeep Grand Cherokee Laredo E with 73,456 miles on the odometer. With a bold red exterior and sleek black cloth interior, this Jeep is sure to turn heads on the road.

Under the hood, you'll find a powerful 3.6L V6 24V VVT UPG I engine with ESS technology, giving you the perfect balance of power and efficiency. Plus, with the automatic transmission with overdrive, you'll have a smooth and seamless driving experience no matter where you go.

But this Jeep isn't just about performance - it's also packed with features that will make your driving experience more comfortable and convenient. With a spacious interior and plenty of legroom, you and your passengers can relax and enjoy the ride. Plus, with the manufacturer options and packages, you'll have all the latest technology at your fingertips, including a touchscreen infotainment system, Bluetooth connectivity, and more.

Whether you're driving through the city or exploring off-road trails, this Jeep has everything you need to make the most of your journey. So why wait? Come take it for a test drive today and experience the thrill of driving a Jeep Grand Cherokee Laredo E for yourself!

## Our Location :



2018 Jeep Grand Cherokee Laredo E

Dallas Drive - (972) 369-4444 - View this car on our website at [dallasdrive.net/7206365/ebrochure](https://dallasdrive.net/7206365/ebrochure)

## Installed Options

### Interior

- Driver Seat- Passenger Seat -inc: Fold Flat
- 60-40 Folding Split-Bench Front Facing Manual Reclining Fold Forward Seatback Cloth Rear Seat
- Manual Tilt/Telescoping Steering Column
- Gauges -inc: Speedometer, Odometer, Oil Pressure, Engine Coolant Temp, Tachometer, Oil Temperature, Transmission Fluid Temp, Engine Hour Meter, Trip Odometer and Trip Computer
- Power Rear Windows and Fixed 3rd Row Windows- Leather/Metal-Look Steering Wheel
- Illuminated Front Cupholder- Rear Cupholder- 3 12V DC Power Outlets- Compass
- Proximity Key For Doors And Push Button Start - Valet Function
- Power Fuel Flap Locking Type
- Remote Keyless Entry w/Integrated Key Transmitter, Illuminated Entry and Panic Button
- Remote Releases -inc: Power Fuel- Cruise Control w/Steering Wheel Controls
- Dual Zone Front Automatic Air Conditioning w/Front Infrared - HVAC -inc: Console Ducts
- Illuminated Locking Glove Box- Full Cloth Headliner
- Leather/Metal-Look Gear Shifter Material
- Interior Trim -inc: Simulated Wood/Metal-Look Instrument Panel Insert, Simulated Wood Door Panel Insert, Metal-Look Console Insert and Chrome/Metal-Look Interior Accents
- Cloth Bucket Seats
- Driver And Passenger Visor Vanity Mirrors w/Driver And Passenger Illumination
- Day-Night Rearview Mirror
- Full Floor Console w/Covered Storage, Mini Overhead Console w/Storage and 3 12V DC Power Outlets
- Front And Rear Map Lights- Fade-To-Off Interior Lighting
- Full Carpet Floor Covering -inc: Carpet Front And Rear Floor Mats - Carpet Floor Trim
- Cargo Area Concealed Storage- Cargo Features -inc: Cargo Tray/Organizer
- Cargo Space Lights- Tracker System- Smart Device Integration
- FOB Controls -inc: Cargo Access
- Instrument Panel Covered Bin, Driver / Passenger And Rear Door Bins
- Power 4th Row Windows w/Driver And Passenger 4 Touch Up/Down

- Power 1st Row Windows w/Driver And Passenger 1-Touch Up/Down
- Delayed Accessory Power- Power Door Locks w/Autolock Feature- Systems Monitor
- Trip Computer- Outside Temp Gauge- Digital/Analog Appearance
- Manual Anti-Whiplash Adjustable Front Head Restraints and Fixed Rear Head Restraints
- Front Center Armrest w/Storage and Rear Center Armrest- 2 Seatback Storage Pockets
- Sentry Key Immobilizer- Air Filtration

---

## Exterior

- Wheels: 17" x 8.0" Silver Aluminum - Tires: P245/70R17 BSW On/Off Road
- Steel Spare Wheel- Compact Spare Tire Mounted Inside Under Cargo- Clearcoat Paint
- Body-Colored Front Bumper w/Black Rub Strip/Fascia Accent
- Body-Colored Rear Step Bumper w/Black Rub Strip/Fascia Accent
- Rocker Panel Extensions and Black Wheel Well Trim
- Chrome Side Windows Trim and Black Front Windshield Trim
- Body-Colored Door Handles- Body-Colored Power Heated Side Mirrors w/Manual Folding
- Fixed Rear Window w/Fixed Interval Wiper, Heated Wiper Park and Defroster
- Deep Tinted Glass- Speed Sensitive Variable Intermittent Wipers
- Galvanized Steel/Aluminum Panels- Lip Spoiler- Body-Colored Grille w/Chrome Accents
- Liftgate Rear Cargo Access- Tailgate/Rear Door Lock Included w/Power Door Locks
- Auto On/Off Aero-Composite Halogen Daytime Running Headlamps w/Delay-Off
- Front Fog Lamps- Perimeter/Approach Lights- LED Brakelights- Laminated Glass

---

## Safety

- Driver Seat- Passenger Seat -inc: Fold Flat
- 60-40 Folding Split-Bench Front Facing Manual Reclining Fold Forward Seatback Cloth Rear Seat
- Manual Tilt/Telescoping Steering Column
- Gauges -inc: Speedometer, Odometer, Oil Pressure, Engine Coolant Temp, Tachometer, Oil Temperature, Transmission Fluid Temp, Engine Hour Meter, Trip Odometer and Trip Computer
- Power Rear Windows and Fixed 3rd Row Windows- Leather/Metal-Look Steering Wheel
- Illuminated Front Cupholder- Rear Cupholder- 3 12V DC Power Outlets- Compass
- Proximity Key For Doors And Push Button Start - Valet Function
- Power Fuel Flap Locking Type
- Remote Keyless Entry w/Integrated Key Transmitter, Illuminated Entry and Panic Button
- Remote Releases -Inc: Power Fuel- Cruise Control w/Steering Wheel Controls
- Dual Zone Front Automatic Air Conditioning w/Front Infrared - HVAC -inc: Console Ducts
- Illuminated Locking Glove Box- Full Cloth Headliner
- Leather/Metal-Look Gear Shifter Material
- Interior Trim -inc: Simulated Wood/Metal-Look Instrument Panel Insert, Simulated Wood Door Panel Insert, Metal-Look Console Insert and Chrome/Metal-Look Interior Accents
- Cloth Bucket Seats
- Driver And Passenger Visor Vanity Mirrors w/Driver And Passenger Illumination
- Day-Night Rearview Mirror
- Full Floor Console w/Covered Storage, Mini Overhead Console w/Storage and 3 12V DC Power Outlets
- Front And Rear Map Lights- Fade-To-Off Interior Lighting
- Full Carpet Floor Covering -inc: Carpet Front And Rear Floor Mats - Carpet Floor Trim
- Cargo Area Concealed Storage- Cargo Features -inc: Cargo Tray/Organizer
- Cargo Space Lights- Tracker System- Smart Device Integration
- FOB Controls -inc: Cargo Access
- Instrument Panel Covered Bin, Driver / Passenger And Rear Door Bins
- Power 1st Row Windows w/Driver And Passenger 1-Touch Up/Down
- Delayed Accessory Power- Power Door Locks w/Autolock Feature- Systems Monitor
- Trip Computer- Outside Temp Gauge- Digital/Analog Appearance
- Manual Anti-Whiplash Adjustable Front Head Restraints and Fixed Rear Head Restraints
- Front Center Armrest w/Storage and Rear Center Armrest- 2 Seatback Storage Pockets
- Sentry Key Immobilizer- Air Filtration

---

## Mechanical

- Engine: 3.6L V6 24V VVT UPG I w/ESS - Transmission: 8-Speed Automatic (850RE)
- 3.27 Rear Axle Ratio- Eco Suspension I- GVWR: 6,500 lbs- 50 State Emissions
- Engine Auto Stop-Start Feature
- Transmission w/Driver Selectable Mode and Sequential Shift Control- Rear-Wheel Drive
- Engine Oil Cooler- 650CCA Maintenance-Free Battery w/Run Down Protection
- 160 Amp Alternator- Towing Equipment -inc: Trailer Sway Control
- 1180# Maximum Payload- Gas-Pressurized Shock Absorbers
- Front And Rear Anti-Roll Bars- Electric Power-Assist Steering- 24.6 Gal. Fuel Tank
- Single Stainless Steel Exhaust- Short And Long Arm Front Suspension w/Coil Springs
- Multi-Link Rear Suspension w/Coil Springs
- 4-Wheel Disc Brakes w/4-Wheel ABS, Front Vented Discs, Brake Assist and Hill Hold

## Option Packages

### Factory Installed Packages

ENGINE: 3.6L V6 24V VVT UPG I W/ESS

QUICK ORDER PACKAGE 2BE LAREDO

E  
-inc: Engine: 3.6L V6 24V VVT \$2,300  
UPG I w/ESS, Transmission: 8-Speed Automatic (850RE), SiriusXM Satellite Radio, Power 8-Way Driver/Manual Passenger Seat, Bright Side Roof Rails, Power 4-Way Driver Lumbar Adjust

WHEELS: 17" X 8.0" SILVER ALUMINUM

VELVET RED PEARLCOAT

BLACK, CLOTH BUCKET SEATS

Option Packages Total  
\$2,300

Dallas Drive  
[dallasdrive.net](http://dallasdrive.net)

(972) 369-4444  
1525 Mariposa Drive  
Mesquite, TX 75150

© 2023 AutoRevo - All rights reserved. - Powered by AutoRevo