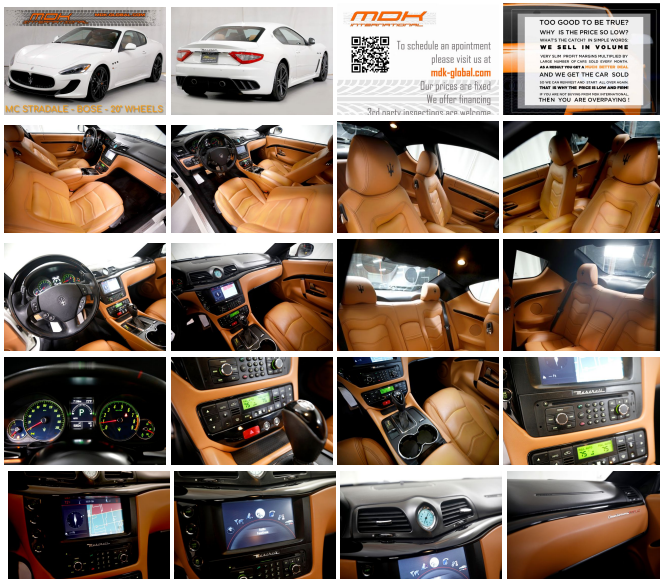


**SALES DEPARTMENT (310) 990 0770**

### Specifications:

- \* MC Stradale - 444hp 4.7L V8 + ZF 6-speed automatic transmission + Skyhook factory coilover suspension + MC Stradale factory bodykit
- \* Local private party trade in
- \* BOSE premium sound system
- \* Heated seats
- \* Black piano wood trim
- \* 20" black wheels
- \* Factory active sport exhaust
- \* Clean title
- \* Carfax certified
- \* Service records available per Carfax report
- \* Brand new rear tires + front tires are nearly new + recent front brakes and rotors
- \* Only 1 key



**BY APPOINTMENT ONLY**

**OUR PRICES ARE FIRM**

- Financing available
- Warranties available
- Third party inspections are welcome
- Trade-ins are welcome
- We buy cars and pay finders free
- Nationwide door-to-door delivery options

For more information, please see our [FAQ](#) You can also schedule an appointment / apply for financing / check availability on our website at:

[mdk-global.com](http://mdk-global.com)

## Vehicle History Report : as Of 04/10/2024

**CARFAX**

**Snapshot**

**2012 MASERATI GRANTURISMO MC**



No accidents or damage reported to CARFAX



**13** Service history records



**6** Previous owners



Personal vehicle



Last owned in California



**50,545** Last reported odometer reading



**FREE CARFAX Report**

See the full CARFAX Report for additional information

\*carfax Snapshot is a reflection of available information on the date the report was pulled. carfax is constantly being updated with new information and is subject to change at any time.

## Our Location :



2012 Maserati GranTurismo MC Stradale - New Tires - Records

MDK International - (310) 990 0770 - View this car on our website at [mdk-global.com/7206228/ebrochure](http://mdk-global.com/7206228/ebrochure)

## Installed Options

### Interior

- 3-spoke black leather sports steering wheel
- Alarm system -inc: electronic engine immobilizer
- Remote key-fob -inc: on/off alarm system, lock/unlock doors, trunklid
- Ventilated Poltrona Frau leather upholstery- Alu grey interior highlights
- Aluminum sill protectors- Auto-dimming rearview mirror- Auxiliary pwr outlets
- Blue instrument dials w/white graphics
- Center console -inc: mounted clock w/chrome-plated trim
- Center tunnel front & rear storage- Cruise control- Cupholders -inc: 2 front/2 rear
- Dual-zone automatic climate control -inc: rear air outlets, demist sensor
- Folding front armrests w/illuminated storage compartment- Folding rear armrests
- Illuminated locking glove box- Paddle shifters
- Pwr adjustable heated front bucket seats -inc: high lateral/driver lumbar support, memory
- Pwr open-assist doors & trunk- Pwr parking brake- Pwr windows- Rear coat hook
- Rear window defogger- Side storage compartments for rear passengers
- Smoked quartz interior highlights- Smoker's pkg
- Steering column w/easy entry/exit feature

### Exterior

- Adaptive light control system- Automatic bi-xenon headlights w/washers
- 20" Neptune wheels- Dual pwr heated folding mirrors- Foglamps- LED taillights
- Tire sealing compound & electric air compressor- Windshield wiper rain sensor

### Safety

- 3-spoke black leather sports steering wheel
- Alarm system -inc: electronic engine immobilizer
- Remote key-fob -inc: on/off alarm system, lock/unlock doors, trunklid
- Ventilated Poltrona Frau leather upholstery- Alu grey interior highlights
- Aluminum sill protectors- Auto-dimming rearview mirror- Auxiliary pwr outlets
- Blue instrument dials w/white graphics
- Center console -inc: mounted clock w/chrome-plated trim
- Center tunnel front & rear storage- Cruise control- Cupholders -inc: 2 front/2 rear
- Dual-zone automatic climate control -inc: rear air outlets, demist sensor
- Folding front armrests w/illuminated storage compartment- Folding rear armrests
- Illuminated locking glove box- Paddle shifters
- Pwr adjustable heated front bucket seats -inc: high lateral/driver lumbar support, memory
- Pwr open-assist doors & trunk- Pwr parking brake- Pwr windows- Rear coat hook
- Rear window defogger- Side storage compartments for rear passengers
- Smoked quartz interior highlights- Smoker's pkg
- Steering column w/easy entry/exit feature

### Mechanical

- 14" front/13" rear cross-drilled brake discs- 4.7L V8 engine
- 6-speed automatic transmission- Chrome plated stainless steel sport exhaust w/dual tips
- Pwr speed-sensitive steering- Rear wheel drive- Rosso (Red) brake calipers

## Option Packages

### Factory Installed Packages

20" NEPTUNE NERO WHEELS	\$1,050
-------------------------	---------

BLACK LEATHER & WOOD TRIM STEERING WHEEL	\$1,365
--	---------

BOSE SURROUND-SOUND SYSTEM	
----------------------------	--

CONTRAST COLORED STITCHING	\$450
----------------------------	-------

DARK EXHAUST PIPES	\$490
--------------------	-------

GIALLO (YELLOW) BRAKE CALIPERS	\$800
--------------------------------	-------

Option Packages Total	\$4,155
-----------------------	---------