



ALTTX.COM

FINANCING AVAILABLE!

2014 Jeep Wrangler Unlimited Rubicon

Our Price \$22,583

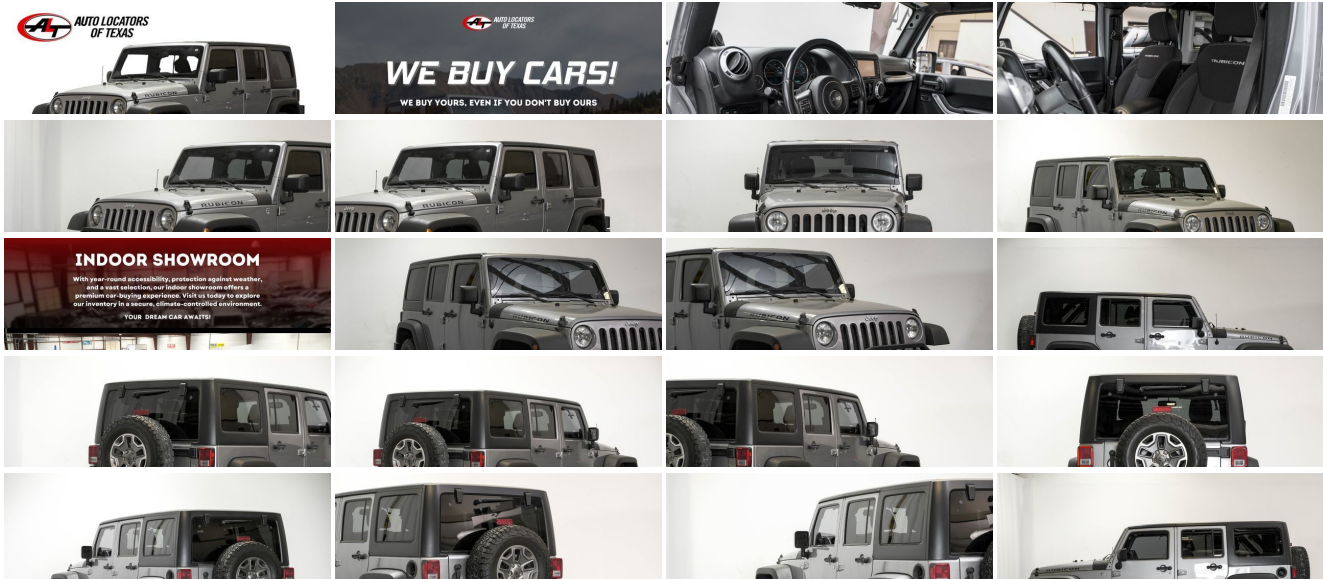
View this vehicle on our website at consignmyvehicle.com



972-612-3100

4460 Tradition Trail , Plano, TX 75093

- Photos
- Details
- Contact



INDOOR SHOWROOM

With our round accessibility protection against weather, and a vast selection, our indoor showroom offers a premium car buying experience. With us, today to explore our inventory in a secure, climate-controlling environment.

YOUR DREAM CAR AWAITS!

Specifications:

Year:	2014
VIN:	1C4BJWFG8EL159982
Make:	Jeep
Stock:	4245
Model/Trim:	Wrangler Unlimited Rubicon
Condition:	Pre-Owned
Body:	SUV
Exterior:	Billet Metallic Clearcoat
Engine:	ENGINE: 3.6L V6 24V VVT
Interior:	Black Cloth
Transmission:	Automatic w/OD
Mileage:	116,583
Drivetrain:	4 Wheel Drive
Economy:	City 16 / Highway 20

Vehicle Description

2014 JEEP Wrangler UNLIMITED Rubicon 4X4 BRAND NEW TIRES! Financing Available Silver metallic exterior Black interior CLEAN CARFAX LOCAL TEXAS CAR OFF ROAD BUMPERS WITH LED LIGHTS NAVIGATION Steering Wheel Controls Bluetooth Technology Hands-Free Communication Air Conditioning Satellite Radio AM/FM Radio Power Windows/Locks Power Mirrors Cruise Control Traction Control External Temperature Keyless Entry Automatic Transmission Well Maintained Very Clean! Professionally Detailed and much more! *** After 25 years in business, we've streamlined the buying process to be completely hassle and stress free. Why wait? We can have you in and out in as little as 45 minutes from the time you step into the dealership to the time you drive away in your new vehicle. Our customers' great reviews have a common theme, great prices, quality vehicles and an efficient no hassle environment. Just look on Yelp and Google to read what our 10,000 plus happy customers are saying about Auto Locators of Texas! We pride ourselves on our friendly, no-pressure approach to selling vehicles. We offer a wide selection of the highest quality used cars, trucks, and SUV's. Our finance department works hard to find every customer the best deal. Trade-ins are always welcome so we can answer your question of "what is my trade worth". We offer a wide variety of services from detailing, ding repair, body shop, service, and extended service contracts. Please take a look at our website at <https://www.altx.com>. We hope to see you soon! WE HOPE TO SEE YOU SOON!

Vehicle History Report : as Of 09/12/2024

CARFAX

Snapshot

2014 JEEP WRANGLER UNLIMITED RUBICON



No accidents or damage reported to CARFAX



25 Service history records



3 Previous owners



Personal vehicle



Last owned in Texas



119,703 Last reported odometer



Installed Options

Interior

- Gauges -inc: Speedometer, Odometer, Engine Coolant Temp, Tachometer, Trip Odometer and Trip Computer
- Power Rear Windows and Removable 3rd Row Windows
- Remote Keyless Entry w/Integrated Key Transmitter, Illuminated Entry and Panic Button
- Manual Air Conditioning- Cloth Bucket Seats -inc: adjustable head restraints
- Full Carpet Floor Covering -inc: Carpet Front And Rear Floor Mats
- Power 1st Row Windows w/Driver And Passenger 1-Touch Down
- Power Door Locks w/Autolock Feature- Trip Computer
- 6-Way Driver Seat -inc: Manual Recline, Height Adjustment and Fore/Aft Movement
- 4-Way Passenger Seat -inc: Manual Recline and Fore/Aft Movement
- 60-40 Folding Split-Bench Front Facing Fold Forward Seatback Rear Seat
- Manual Tilt Steering Column- Leather Steering Wheel- Front Cupholder
- Rear Cupholder- 2 12V DC Power Outlets- Compass
- Cruise Control w/Steering Wheel Controls- Locking Glove Box
- Interior Trim -inc: Deluxe Sound Insulation, Metal-Look Instrument Panel Insert, Metal-Look Door Panel Insert and Metal-Look Interior Accents
- Leather/Chrome Gear Shifter Material- Day-Night Auto-Dimming Rearview Mirror
- Driver And Passenger Visor Vanity Mirrors
- Full Floor Console w/Locking Storage, 2 12V DC Power Outlets and 1 120V AC Power Outlet
- Front Map Lights- Fade-To-Off Interior Lighting
- Carpet Floor Trim, Carpet And Rubber Mat
- Instrument Panel Bin, Dashboard Storage, Driver And Passenger Door Bins
- Delayed Accessory Power- Outside Temp Gauge- Analog Appearance
- Manual Adjustable Front Head Restraints and Fixed Rear Head Restraints
- Front Center Armrest w/Storage- 2 Seatback Storage Pockets- Perimeter Alarm
- Sentry Key Immobilizer- 2 12V DC Power Outlets and 1 120V AC Power Outlet

reading

FREE CARFAX Report

See the full CARFAX Report for additional information

*carfax Snapshot is a reflection of available information on the date the report was pulled. carfax is constantly being updated with new information and is subject to change at any time.

Exterior

- Sunrider Soft Top- Black Front Bumper w/2 Tow Hooks
- Black Rear Bumper w/1 Tow Hook- Black Power Heated Side Mirrors w/Manual Folding
- Deep Tinted Glass- Tailgate/Rear Door Lock Included w/Power Door Locks
- Wheels: 17" x 7.5" Polished Mineral Gray
- Tires: LT255/75R17 BSW Off Road -inc: BF Goodrich Brand Tires
- Aluminum Spare Wheel- Full-Size Spare Tire Mounted Outside Rear
- Clearcoat Paint w/Badging- Black Fender Flares- Black Side Windows Trim
- Black Door Handles- Removable Rear Window- Variable Intermittent Wipers
- Fully Galvanized Steel Panels- Convertible w/Fixed Roll-Over Protection
- Body-Colored Grille- Conventional Rear Cargo Access
- Auto On/Off Aero-Composite Halogen Headlamps- Front Fog Lamps

Safety

- Gauges -inc: Speedometer, Odometer, Engine Coolant Temp, Tachometer, Trip Odometer and Trip Computer
- Power Rear Windows and Removable 3rd Row Windows
- Remote Keyless Entry w/Integrated Key Transmitter, Illuminated Entry and Panic Button
- Manual Air Conditioning- Cloth Bucket Seats -inc: adjustable head restraints
- Full Carpet Floor Covering -inc: Carpet Front And Rear Floor Mats
- Power 1st Row Windows w/Driver And Passenger 1-Touch Down
- Power Door Locks w/Autolock Feature- Trip Computer
- 6-Way Driver Seat -inc: Manual Recline, Height Adjustment and Fore/Aft Movement
- 4-Way Passenger Seat -inc: Manual Recline and Fore/Aft Movement
- 60-40 Folding Split-Bench Front Facing Fold Forward Seatback Rear Seat
- Manual Tilt Steering Column- Leather Steering Wheel- Front Cupholder
- Rear Cupholder- 2 12V DC Power Outlets- Compass
- Cruise Control w/Steering Wheel Controls- Locking Glove Box
- Interior Trim -inc: Deluxe Sound Insulation, Metal-Look Instrument Panel Insert, Metal-Look Door Panel Insert and Metal-Look Interior Accents
- Leather/Chrome Gear Shifter Material- Day-Night Auto-Dimming Rearview Mirror
- Driver And Passenger Visor Vanity Mirrors
- Full Floor Console w/Locking Storage, 2 12V DC Power Outlets and 1 120V AC Power Outlet
- Front Map Lights- Fade-To-Off Interior Lighting
- Carpet Floor Trim, Carpet And Rubber Mat
- Instrument Panel Bin, Dashboard Storage, Driver And Passenger Door Bins
- Delayed Accessory Power- Outside Temp Gauge- Analog Appearance
- Manual Adjustable Front Head Restraints and Fixed Rear Head Restraints
- Front Center Armrest w/Storage- 2 Seatback Storage Pockets- Perimeter Alarm
- Sentry Key Immobilizer- 2 12V DC Power Outlets and 1 120V AC Power Outlet

Mechanical

- Transmission: 6-Speed Manual (NSG370)- Driver Selectable Front Locking Differential
- Driver Selectable Rear Locking Differential- Brake Actuated Limited Slip Differential
- Engine: 3.6L V6 24V VVT- 3.73 Rear Axle Ratio- Performance Suspension
- GVWR: 5,700 lbs- Manual Transfer Case- Part-Time Four-Wheel Drive
- Engine Oil Cooler- 600CCA Maintenance-Free Battery- 160 Amp Alternator
- Towing Equipment -inc: Trailer Sway Control- 4 Skid Plates- 892# Maximum Payload
- HD Shock Absorbers- Front Active w/Driver Control Anti-Roll Bar and Rear Anti-Roll Bar
- Hydraulic Power-Assist Steering- 22.5 Gal. Fuel Tank- Single Stainless Steel Exhaust
- Auto Locking Hubs- Leading Link Front Suspension w/Coil Springs
- Solid Axle Rear Suspension w/Coil Springs
- 4-Wheel Disc Brakes w/4-Wheel ABS, Front And Rear Vented Discs, Brake Assist and Hill Hold Control

Option Packages

Factory Installed Packages

ENGINE: 3.6L V6 24V VVT

Listed prices do not include Tax, Title and License. The pricing, equipment and miles shown is believed to be accurate, but we do not warranty or guarantee such accuracy. Vehicle information is based off standard equipment and may vary from vehicle to vehicle. Please call or email for complete vehicle specific information.

Consign My Vehicle

Consign My Vehicle

View this car on our website at consignmyvehicle.com/7205738

Website: consignmyvehicle.com

Phone: [972-612-3100](tel:972-612-3100)

Map: [4460 Tradition Trail, Plano, TX 75093](#)

