

## 2006 Jeep Wrangler SE

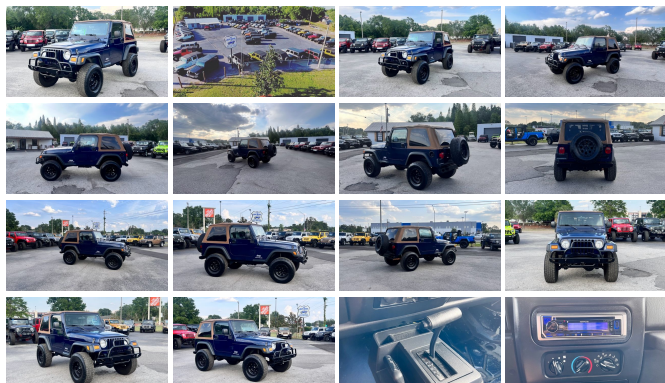
View this car on our website at [thejeepdepot.com/7205632/ebrochure](http://thejeepdepot.com/7205632/ebrochure)



Our Price **\$14,900**

### Specifications:

|                      |                                  |
|----------------------|----------------------------------|
| <b>Year:</b>         | 2006                             |
| <b>VIN:</b>          | 1J4FA29S96P739157                |
| <b>Make:</b>         | Jeep                             |
| <b>Model/Trim:</b>   | Wrangler SE                      |
| <b>Condition:</b>    | Pre-Owned                        |
| <b>Body:</b>         | SUV                              |
| <b>Exterior:</b>     | Midnight Blue Pearl              |
| <b>Engine:</b>       | 4.0L SMPI I6 "POWER TECH" ENGINE |
| <b>Interior:</b>     | Black                            |
| <b>Transmission:</b> | 4-SPEED AUTOMATIC TRANSMISSION   |
| <b>Mileage:</b>      | 142,010                          |
| <b>Drivetrain:</b>   | 4 Wheel Drive                    |
| <b>Economy:</b>      | City 14 / Highway 18             |



2006 Jeep Wrangler SE

The Jeep Depot - (813) 399-2521 - View this car on our website at [thejeepdepot.com/7205632/ebrochure](http://thejeepdepot.com/7205632/ebrochure)

**Our Location :**



2006 Jeep Wrangler SE

The Jeep Depot - (813) 399-2521 - View this car on our website at [thejeepdepot.com/7205632/ebrochure](http://thejeepdepot.com/7205632/ebrochure)

## Installed Options

### Interior

- (4) speakers- AM/FM stereo w/CD player-inc: changer control- Aux 12-volt pwr outlet
- Cargo tie down loops- Easy access tip/slide passenger seat- Fixed long mast antenna
- Floor console w/cup holder- Folding rear seat
- Front/rear seat, wheelhouse, cargo area carpeting- Glove box w/lock
- Instrument panel ventilation- Sport bar w/full padding- Tilt steering column
- Vinyl reclining high-back front bucket seats

### Exterior

- Easy folding soft top- Fender flares- Fold away mirrors- Side & rear plastic windows
- Variable intermittent windshield wipers

### Safety

- (4) speakers- AM/FM stereo w/CD player-inc: changer control- Aux 12-volt pwr outlet
- Cargo tie down loops- Easy access tip/slide passenger seat- Fixed long mast antenna
- Floor console w/cup holder- Folding rear seat
- Front/rear seat, wheelhouse, cargo area carpeting- Glove box w/lock
- Instrument panel ventilation- Sport bar w/full padding- Tilt steering column
- Vinyl reclining high-back front bucket seats

### Mechanical

- (5) 15" x 7.0" full-face steel wheels - 124-amp alternator- 19 gallon fuel tank
- 2.4L SMPI DOHC 16V 4-cyl engine - 3.73 axle ratio- 4450# GVWR
- 6-speed manual transmission- 600-CCA maintenance free battery
- Command-Trac part-time 4WD system- Dana 30/186MM front axle
- Dana M35/194MM rear axle- Front stabilizer bar- Full size spare tire w/outside carrier
- Gas-charged shock absorbers- Next generation engine controller
- P215/75R15 all-terrain RBL "Wrangler" tires- Pwr front disc/rear drum brakes
- Pwr recirculating ball steering- Skid plates-inc: transfer case, fuel tank

## Option Packages

### Factory Installed Packages

|   |         |
|---|---------|
| 4.0L SMPI I6 "POWER TECH" ENGINE<br>-inc: 117 amp alternator, rear stabilizer bar         | \$1,280 |
| 4-SPEED AUTOMATIC TRANSMISSION<br>-inc: lock-up torque converter                          | \$825   |
| (2) FRONT/(1) REAR TOW HOOK   | \$60    |
| ENGINE BLOCK HEATER   | \$35    |
| FRONT FLOOR MATS  | \$30    |
| FULL METAL DOORS W/ROLL-UP WINDOWS<br>-inc: light tint door windows                       | \$125   |
| SUNRIDER SOFT TOP   | \$250   |
| AIR CONDITIONING  | \$895   |
| 24N SE CUSTOMER PREFERRED ORDER SELECTION PKG<br>-inc: 4.0L I6 engine, 4-speed auto trans |         |
| 50-STATE EMISSIONS  |         |
| PAINT   | \$150   |
| CLOTH HIGH-BACK FRONT BUCKET SEATS<br>-inc: easy access tip/slide driver seat             | \$130   |
| Option Packages Total   | \$3,780 |

The APR and default terms may not apply to all vehicles, to all sales or to all customers. The bank and lenders may or may not offer loans and financing based on each customers credit worthiness. This may or may not be out of the dealerships control.

The Jeep Depot

[thejeepdepot.com](http://thejeepdepot.com)

(813) 399-2521

6222 U.S. Hwy 301 South

Riverview, FL 33578

© 2023 AutoRevo - All rights reserved. - Powered by AutoRevo