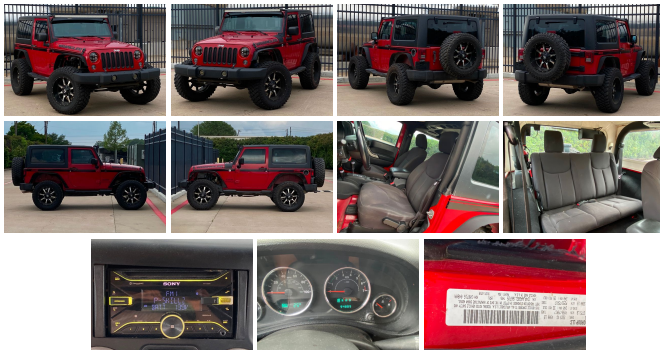


## 2014 Jeep Wrangler Sport

View this car on our website at [schneckmotorcompany.com/7205270/ebrochure](http://schneckmotorcompany.com/7205270/ebrochure)



Cash Price **\$16,990**

### Specifications:

<b>Year:</b>	2014
<b>VIN:</b>	1C4AJWAG8EL166725
<b>Make:</b>	Jeep
<b>Stock:</b>	166725
<b>Model/Trim:</b>	Wrangler Sport
<b>Condition:</b>	Pre-Owned
<b>Body:</b>	SUV
<b>Exterior:</b>	Firecracker Red Clear Coat
<b>Engine:</b>	ENGINE: 3.6L V6 24V VVT
<b>Interior:</b>	Black Cloth
<b>Transmission:</b>	TRANSMISSION: 5-SPEED AUTOMATIC (W5A580)
<b>Mileage:</b>	94,889
<b>Drivetrain:</b>	4 Wheel Drive
<b>Economy:</b>	City 17 / Highway 21

**COMING SOON ! PLEASE  
CALL TO SET AN  
APPOINTMENT, YOU  
MIGHT BE ABLE TO BUY IT  
RAW!**

Are you ready for an adventure? Look no further than this 2014 Jeep Wrangler Sport! With 94,889 miles on the odometer, this rugged and reliable vehicle is ready to take you on all your off-roading excursions. The vibrant red exterior is sure to turn heads, while the black cloth interior provides a comfortable and durable space to enjoy your ride.

Under the hood, you'll find a powerful 3.6L V6 24V VVT engine that delivers impressive performance and efficiency. Paired with a smooth 5-speed automatic transmission, this Jeep is ready to tackle any terrain with ease. Whether you're cruising down the highway or navigating rocky trails, this vehicle has the power and capability to get you where you need to go.

This Jeep Wrangler Sport comes equipped with a variety of manufacturer options and packages to enhance your driving experience. The Command-Trac Shift-on-the-Fly 4WD system allows you to easily switch between two-wheel and four-wheel drive, giving you the flexibility to adapt to changing road conditions. The Hill Start Assist system helps you navigate steep inclines with confidence. While the

...system helps you manage steep inclines and declines, while the Electronic Stability Control system keeps you in control on slippery surfaces.

But that's not all - this Jeep also features a variety of convenience and entertainment features to keep you connected and comfortable on the road. The AM/FM stereo system with CD player and auxiliary input allows you to play all your favorite tunes, while the air conditioning system keeps you cool and comfortable no matter what the weather outside.

Overall, this 2014 Jeep Wrangler Sport is the perfect vehicle for anyone who loves adventure and exploration. With its rugged design, powerful engine, and advanced features, this Jeep is ready to take you on all your off-road adventures. Don't miss your chance to own this incredible vehicle - come see it for yourself today!

2014 Jeep Wrangler Sport

Schneck Motor Company - 214-501-6239 - View this car on our website at [schneckmotorcompany.com/7205270/ebrochure](http://schneckmotorcompany.com/7205270/ebrochure)

### Vehicle History Report : as Of 09/29/2023



#### Snapshot

### 2014 JEEP WRANGLER SPORT



Accident reported



8 Service history records



2 Previous owners



Last owned in Texas



26 Detailed records available



94,910 Last reported odometer reading



**FREE CARFAX Report**

See the full CARFAX Report for additional information

\*carfax Snapshot is a reflection of available information on the date the report was pulled. carfax is constantly being updated with new information and is subject to change at any time.

### Our Location :



2014 Jeep Wrangler Sport

Schneck Motor Company - 214-501-6239 - View this car on our website at [schneckmotorcompany.com/7205270/ebrochure](http://schneckmotorcompany.com/7205270/ebrochure)

## Installed Options

Interior

- 2 12V DC Power Outlets- 2 Seatback Storage Pockets
- 4-Way Passenger Seat -inc: Manual Recline, Fore/Aft Movement and Manual Rear Seat Easy Entry
- 6-Way Driver Seat -inc: Manual Recline, Height Adjustment and Fore/Aft Movement
- Analog Appearance- Carpet Floor Trim, Carpet And Rubber Mat
- Cloth Bucket Seats -inc: adjustable head restraints - Compass
- Cruise Control w/Steering Wheel Controls- Day-Night Rearview Mirror
- Delayed Accessory Power- Driver And Passenger Visor Vanity Mirrors
- Fade-To-Off Interior Lighting- Fixed Rear Head Restraints
- Front Center Armrest w/Storage- Front Cupholder
- Full Carpet Floor Covering -inc: Carpet Front Floor Mats
- Full Floor Console w/Locking Storage and 2 12V DC Power Outlets
- Gauges -inc: Speedometer, Odometer, Engine Coolant Temp, Tachometer, Trip Odometer and Trip Computer
- Instrument Panel Bin, Dashboard Storage, Driver And Passenger Door Bins
- Interior Trim -inc: Metal-Look Instrument Panel Insert, Metal-Look Door Panel Insert and Metal-Look Interior Accents
- Locking Cargo Area Concealed Storage- Locking Glove Box- Manual 1st Row Windows
- Manual Tilt Steering Column- Outside Temp Gauge- Rear Cupholder
- Removable Full Folding Bench Front Facing Tumble Forward Rear Seat
- Removable Rear Windows- Sentry Key Immobilizer- Trip Computer
- Urethane Gear Shifter Material

---

## Exterior

- Aero-Composite Halogen Headlamps- Black Door Handles- Black Fender Flares
- Black Front Bumper w/2 Tow Hooks- Black Manual Side Mirrors w/Manual Folding
- Black Rear Bumper w/1 Tow Hook- Black Side Windows Trim- Body-Colored Grille
- Clearcoat Paint- Conventional Rear Cargo Access
- Convertible w/Fixed Roll-Over Protection- Front Fog Lamps
- Full-Size Spare Tire Mounted Outside Rear- Fully Galvanized Steel Panels
- Light Tinted Glass- Manual Tailgate/Rear Door Lock- Removable Rear Window
- Steel Spare Wheel- Sunrider Soft Top- Tires: P225/75R16 BSW On/Off Road
- Variable Intermittent Wipers- Wheels: 16" x 7.0" Luxury Styled Steel

---

## Safety

- 2 12V DC Power Outlets- 2 Seatback Storage Pockets
- 4-Way Passenger Seat -inc: Manual Recline, Fore/Aft Movement and Manual Rear Seat Easy Entry
- 6-Way Driver Seat -inc: Manual Recline, Height Adjustment and Fore/Aft Movement
- Analog Appearance- Carpet Floor Trim, Carpet And Rubber Mat
- Cloth Bucket Seats -inc: adjustable head restraints - Compass
- Cruise Control w/Steering Wheel Controls- Day-Night Rearview Mirror
- Delayed Accessory Power- Driver And Passenger Visor Vanity Mirrors
- Fade-To-Off Interior Lighting- Fixed Rear Head Restraints
- Front Center Armrest w/Storage- Front Cupholder
- Full Carpet Floor Covering -inc: Carpet Front Floor Mats
- Full Floor Console w/Locking Storage and 2 12V DC Power Outlets
- Gauges -inc: Speedometer, Odometer, Engine Coolant Temp, Tachometer, Trip Odometer and Trip Computer
- Instrument Panel Bin, Dashboard Storage, Driver And Passenger Door Bins
- Interior Trim -inc: Metal-Look Instrument Panel Insert, Metal-Look Door Panel Insert and Metal-Look Interior Accents
- Locking Cargo Area Concealed Storage- Locking Glove Box- Manual 1st Row Windows
- Manual Tilt Steering Column- Outside Temp Gauge- Rear Cupholder
- Removable Full Folding Bench Front Facing Tumble Forward Rear Seat
- Removable Rear Windows- Sentry Key Immobilizer- Trip Computer
- Urethane Gear Shifter Material

---

## Mechanical

- 1000# Maximum Payload- 160 Amp Alternator- 18.6 Gal. Fuel Tank- 2 Skid Plates
- 3.21 Rear Axle Ratio
- 4-Wheel Disc Brakes w/4-Wheel ABS, Front And Rear Vented Discs, Brake Assist and Hill Hold Control
- 600CCA Maintenance-Free Battery- Auto Locking Hubs
- Brake Actuated Limited Slip Differential- Engine Oil Cooler- Engine: 3.6L V6 24V VVT
- Front And Rear Anti-Roll Bars- GVWR: 4,900 lbs- Gas-Pressurized Shock Absorbers
- Hydraulic Power-Assist Steering- Leading Link Front Suspension w/Coil Springs
- Manual Transfer Case- Normal Duty Suspension- Part-Time Four-Wheel Drive
- Single Stainless Steel Exhaust- Solid Axle Rear Suspension w/Coil Springs
- Towing Equipment -inc: Trailer Sway Control- Transmission: 6-Speed Manual (NSG370)

---

Payments are "with approved credit". Some select cars can not be financed.

---

Schneck Motor Company  
[schneckmotorcompany.com](https://schneckmotorcompany.com)  
214-501-6239

1200 Commerce Dr.  
Plano, TX 75093

© 2023 AutoRevo - All rights reserved. - Powered by [AutoRevo](#)