

harperwholesale.com
318-218-5177
1226 Homer Road
Minden, LA 71055

Pat Harper Wholesale,
LLC

2018 Jeep Grand Cherokee Altitude

View this car on our website at harperwholesale.com/7204577/ebrochure



Our Price **\$29,995**

Specifications:

Year: 2018
VIN: 1C4RJEAG8JC433742
Make: Jeep
Stock: 33742A
Model/Trim: Grand Cherokee Altitude
Condition: Pre-Owned
Body: SUV
Exterior: Diamond Black Crystal Pearlcoat
Engine: ENGINE: 3.6L V6 24V VVT UPG I W/ESS
Interior: Black Cloth
Transmission: TRANSMISSION: 8-SPEED AUTOMATIC (850RE)
Mileage: 52,230
Drivetrain: Rear Wheel Drive
Economy: City 19 / Highway 26

Are you ready to take on any adventure that comes your way? Look no further than this 2018 Jeep Grand Cherokee Altitude, with only 52,230 miles on the odometer, this vehicle is ready to hit the road with you. The sleek black exterior is sure to turn heads and the black cloth interior is both stylish and comfortable.

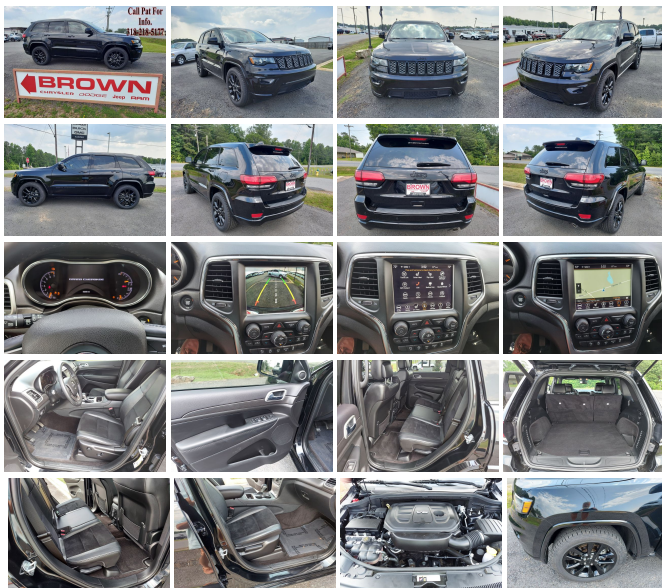
Under the hood, you'll find a powerful ENGINE: 3.6L V6 24V VVT UPG I W/ESS, providing you with the strength and durability to tackle any terrain. The TRANSMISSION: 8-SPEED AUTOMATIC (850RE) is smooth and responsive, giving you the control you need on the road.

This Jeep Grand Cherokee Altitude is loaded with manufacturer options and packages, making it the perfect vehicle for any adventure. It comes equipped with a Uconnect 4C NAV with 8.4-inch display, providing you with access to navigation, SiriusXM radio, and more. The Altitude IV Package adds blacked-out exterior accents, 20-inch gloss black aluminum wheels, and a power liftgate for easy access to your cargo.

But that's not all, this Jeep Grand Cherokee Altitude also comes equipped with a ParkView Rear Back-Up Camera, making parking and reversing a breeze. The ParkSense Rear Park Assist System alerts you when you're getting too close to an object, giving you peace of mind on the road.

The 2018 Jeep Grand Cherokee Altitude is not just a vehicle, it's a lifestyle. Whether you're cruising down the highway or taking on rugged terrain, this vehicle is built to handle it all. With its sleek design, powerful engine, and advanced features, you'll feel confident and excited every time you get behind the wheel.

Don't miss out on the opportunity to own this incredible vehicle. With only 52,230 miles on the odometer, it won't be around for long. Come see it for yourself and take it for a test drive today!



Our Location :



2018 Jeep Grand Cherokee Altitude

Pat Harper Wholesale, LLC - 318-218-5177 - View this car on our website at harperwholesale.com/7204577/ebrochure

Installed Options

Interior

- Driver Seat- Passenger Seat -inc: Fold Flat
- 60-40 Folding Split-Bench Front Facing Manual Reclining Fold Forward Seatback Rear Seat
- Manual Tilt/Telescoping Steering Column
- Gauges -inc: Speedometer, Odometer, Oil Pressure, Engine Coolant Temp, Tachometer, Oil Temperature, Transmission Fluid Temp, Engine Hour Meter, Trip Odometer and Trip Computer
- Power Rear Windows and Fixed 3rd Row Windows- Leather/Metal-Look Steering Wheel
- Illuminated Front Cupholder- Rear Cupholder- 3 12V DC Power Outlets- Compass
- Proximity Key For Doors And Push Button Start - Valet Function
- Power Fuel Flap Locking Type
- Remote Keyless Entry w/Integrated Key Transmitter, Illuminated Entry and Panic Button
- Remote Releases -inc: Power Fuel- Cruise Control w/Steering Wheel Controls
- Dual Zone Front Automatic Air Conditioning w/Front Infrared - HVAC -inc: Console Ducts
- Illuminated Locking Glove Box- Full Cloth Headliner
- Leather/Metal-Look Gear Shifter Material
- Interior Trim -inc: Simulated Wood/Metal-Look Instrument Panel Insert, Simulated Wood Door Panel Insert, Metal-Look Console Insert and Chrome/Metal-Look Interior Accents
- Driver And Passenger Visor Vanity Mirrors w/Driver And Passenger Illumination
- Day-Night Rearview Mirror
- Full Floor Console w/Covered Storage, Mini Overhead Console w/Storage and 3 12V DC Power Outlets
- Front And Rear Map Lights- Fade-To-Off Interior Lighting
- Full Carpet Floor Covering -inc: Carpet Front And Rear Floor Mats - Carpet Floor Trim
- Cargo Area Concealed Storage- Cargo Features -inc: Cargo Tray/Organizer
- Cargo Compartment Cover- Cargo Space Lights- Tracker System
- Smart Device Integration- FOB Controls -inc: Cargo Access
- Instrument Panel Covered Bin, Driver / Passenger And Rear Door Bins
- Power 1st Row Windows w/Driver And Passenger 1-Touch Up/Down
- Delayed Accessory Power- Power Door Locks w/Autolock Feature- Custom Metal

Option Packages

Factory Installed Packages

ENGINE: 3.6L V6 24V VVT UPG I W/ESS

TRANSMISSION: 8-SPEED AUTOMATIC (850RE)

DIAMOND BLACK CRYSTAL PEARLCOAT

BLACK, BLACK SUEDE SEATS W/BLACK STITCHING

SECURITY & CONVENIENCE GROUP

-inc: Remote Start System, 115V Auxiliary Power Outlet, Universal Garage Door Opener, Heated Front Seats, Heated Steering Wheel, Power Liftgate, Security Alarm \$2,000

Option Packages Total \$2,000

- Delayed Accessory Power- Power Door Locks w/Autolock Feature- Systems Monitor
- Trip Computer- Outside Temp Gauge- Digital/Analog Appearance
- Manual Anti-Whiplash Adjustable Front Head Restraints and Fixed Rear Head Restraints
- Front Center Armrest w/Storage and Rear Center Armrest- 2 Seatback Storage Pockets
- Sentry Key Immobilizer- Air Filtration

Exterior

- Tires: 265/50R20 BSW A/S LRR- Wheels: 20" x 8.0" Gloss Black Aluminum
- Steel Spare Wheel- Compact Spare Tire Mounted Inside Under Cargo- Clearcoat Paint
- Step Bumper- Rocker Panel Extensions and Black Wheel Well Trim
- Black Front Windshield Trim- Body-Colored Door Handles
- Body-Colored Power Heated Side Mirrors w/Manual Folding
- Fixed Rear Window w/Fixed Interval Wiper, Heated Wiper Park and Defroster
- Deep Tinted Glass- Speed Sensitive Variable Intermittent Wipers
- Galvanized Steel/Aluminum Panels- Lip Spoiler
- Tailgate/Rear Door Lock Included w/Power Door Locks
- Auto On/Off Aero-Composite Halogen Daytime Running Headlamps w/Delay-Off
- Front Fog Lamps- Perimeter/Approach Lights- LED Brake Lights- Laminated Glass

Safety

- Driver Seat- Passenger Seat -inc: Fold Flat
- 60-40 Folding Split-Bench Front Facing Manual Reclining Fold Forward Seatback Rear Seat
- Manual Tilt/Telescoping Steering Column
- Gauges -inc: Speedometer, Odometer, Oil Pressure, Engine Coolant Temp, Tachometer, Oil Temperature, Transmission Fluid Temp, Engine Hour Meter, Trip Odometer and Trip Computer
- Power Rear Windows and Fixed 3rd Row Windows- Leather/Metal-Look Steering Wheel
- Illuminated Front Cupholder- Rear Cupholder- 3 12V DC Power Outlets- Compass
- Proximity Key For Doors And Push Button Start - Valet Function
- Power Fuel Flap Locking Type
- Remote Keyless Entry w/Integrated Key Transmitter, Illuminated Entry and Panic Button
- Remote Releases -inc: Power Fuel- Cruise Control w/Steering Wheel Controls
- Dual Zone Front Automatic Air Conditioning w/Front Infrared - HVAC -inc: Console Ducts
- Illuminated Locking Glove Box- Full Cloth Headliner
- Leather/Metal-Look Gear Shifter Material
- Interior Trim -inc: Simulated Wood/Metal-Look Instrument Panel Insert, Simulated Wood Door Panel Insert, Metal-Look Console Insert and Chrome/Metal-Look Interior Accents
- Driver And Passenger Visor Vanity Mirrors w/Driver And Passenger Illumination
- Day-Night Rearview Mirror
- Full Floor Console w/Covered Storage, Mini Overhead Console w/Storage and 3 12V DC Power Outlets
- Front And Rear Map Lights- Fade-To-Off Interior Lighting
- Full Carpet Floor Covering -inc: Carpet Front And Rear Floor Mats - Carpet Floor Trim
- Cargo Area Concealed Storage- Cargo Features -inc: Cargo Tray/Organizer
- Cargo Compartment Cover- Cargo Space Lights- Tracker System
- Smart Device Integration- FOB Controls -inc: Cargo Access
- Instrument Panel Covered Bin, Driver / Passenger And Rear Door Bins
- Power 1st Row Windows w/Driver And Passenger 1-Touch Up/Down
- Delayed Accessory Power- Power Door Locks w/Autolock Feature- Systems Monitor
- Trip Computer- Outside Temp Gauge- Digital/Analog Appearance
- Manual Anti-Whiplash Adjustable Front Head Restraints and Fixed Rear Head Restraints
- Front Center Armrest w/Storage and Rear Center Armrest- 2 Seatback Storage Pockets
- Sentry Key Immobilizer- Air Filtration

Mechanical

- Transmission: 8-Speed Automatic (850RE)
- Transmission w/Driver Selectable Mode and Sequential Shift Control
- Engine: 3.6L V6 24V VVT UPG I w/ESS - 3.27 Rear Axle Ratio- Eco Suspension I
- GVWR: 6,500 lbs- 50 State Emissions- Engine Auto Stop-Start Feature
- Rear-Wheel Drive- Engine Oil Cooler
- 650CCA Maintenance-Free Battery w/Run Down Protection- 160 Amp Alternator
- Towing Equipment -inc: Trailer Sway Control - 1180# Maximum Payload
- Gas-Pressurized Shock Absorbers- Front And Rear Anti-Roll Bars
- Electric Power-Assist Steering- 24.6 Gal. Fuel Tank- Stainless Steel Exhaust
- Short And Long Arm Front Suspension w/Coil Springs
- Multi-Link Rear Suspension w/Coil Springs
- 4-Wheel Disc Brakes w/4-Wheel ABS, Front Vented Discs, Brake Assist and Hill Hold Control

Pat Harper Wholesale, LLC

harperwholesale.com

318-218-5177

1226 Homer Road

Minden, LA 71055

© 2024 AutoRevo - All rights reserved. - Powered by [AutoRevo](#)