



2023 Ford F-150 XL

Our Price \$42,676

Retail Value \$45,775

View this vehicle on our website at 311chevy.com

SMART
CHEVROLET

[888-601-2426](tel:888-601-2426)

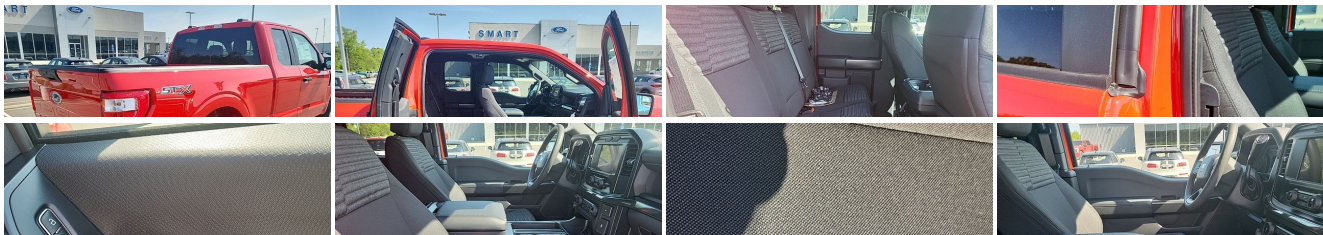
4417 N Carolina HIGHWAY 704 , Madison, NC 27025

Photos

Details

Contact





Specifications:

Year:	2023
VIN:	1FTEX1CP4PKD52755
Make:	Ford
Stock:	D52755
Model/Trim:	F-150 XL
Condition:	New
Body:	Pickup Truck
Exterior:	Race Red
Engine:	ENGINE: 2.7L V6 ECOBOOST
Interior:	Black Cloth
Transmission:	Automatic w/OD
Mileage:	207
Drivetrain:	Rear Wheel Drive
Economy:	City 18 / Highway 25

Vehicle Description

Smart Ford invite you to check out this 2023 Ford F-150 finished in Race Red with Black Sport Cloth

Powered by the 2.7L V6 with a 10 speed trans and RWD and well equipped with the STX appearance package 20" wheels and much more

EQUIPMENT GROUP 101A
 XL SERIES
 OPTIONAL EQUIPMENT/OTHER
 2.7L V6 ECOBOOST 1,285.00
 275/60R20 BSW ALL-SEASON NO CHARGE
 3.73 ELECTRONIC LOCK RR AXLE 570.00
 6325# GVWR PACKAGE
 STX APPEARANCE PACKAGE 2,585.00
 .SYNC 4 W/ENHANCED VOICE RECOG
 .REAR-WINDOW DEFROSTER
 .SIRIUS XM W/ 360L
 .PRIVACY GLASS W/REAR DEFROSTE
 50 STATE EMISSIONS NO CHARGE
 INTERIOR WORK SURFACE 195.00
 AUTO START-STOP REMOVAL - 50.00
 BOXLINK 80.00
 FOG LAMPS NO CHARGE
 20" 6-SPOKE MAGNETIC PKT WHLS 1,225.00
 STX SPORT CLOTH 40/CON/40 295.00
 STOWABLE LOADING RAMPS *ACCY 595.00

Installed Options

Interior

- Cloth 40/20/40 Front Seat -inc: 2-way manual driver/passenger adjustment and armrest
- Gauges -inc: Speedometer, Odometer, Voltmeter, Oil Pressure, Engine Coolant Temp, Tachometer, Transmission Fluid Temp, Trip Odometer and Trip Computer
- Power Rear Windows
- Remote Keyless Entry w/Integrated Key Transmitter, Illuminated Entry and Panic Button
- Smart Device Remote Engine Start

Option Packages

Factory Installed Packages

ENGINE: 2.7L V6 ECOBOOST

\$1,285

Option Packages Total

- SYNC 4 -inc: 8" LCD capacitive touchscreen w/swipe capability, wireless phone connection, cloud connected, AppLink w/App catalog, 911 Assist, Apple CarPlay and Android Auto compatibility and digital owners manual
- Power 1st Row Windows w/Driver And Passenger 1-Touch Up/Down
- Power Door Locks w/Autolock Feature- Trip Computer- Driver Seat- Passenger Seat
- 60-40 Folding Split-Bench Front Facing Fold-Up Cushion Rear Seat
- Manual Tilt/Telescoping Steering Column
- FordPass Connect 4G Mobile Hotspot Internet Access- Front Cupholder
- Rear Cupholder- Compass- Cruise Control w/Steering Wheel Controls
- Manual Air Conditioning- HVAC -inc: Underseat Ducts- Locking Glove Box
- Interior Trim -inc: Cabback Insulator and Metal-Look Interior Accents
- Full Cloth Headliner- Urethane Gear Shifter Material- Day-Night Rearview Mirror
- Passenger Visor Vanity Mirror
- Mini Overhead Console w/Storage and 1 12V DC Power Outlet - Front Map Lights
- Fade-To-Off Interior Lighting- Full Vinyl/Rubber Floor Covering
- Pickup Cargo Box Lights- Reverse Sensing System
- Instrument Panel Bin, Dashboard Storage, Interior Concealed Storage, Driver / Passenger And Rear Door Bins
- Delayed Accessory Power- Outside Temp Gauge- Analog Appearance
- Lane-Keeping System -inc: lane-keeping alert, lane-keeping aid and driver alert
- Pre-Collision Assist w/Automatic Emergency Braking -inc: pedestrian detection, forward collision warning and dynamic brake support
- Rear View Camera- Seats w/Cloth Back Material
- Manual Adjustable Front Head Restraints and Manual Adjustable Rear Head Restraints
- Perimeter Alarm- Securilock Anti-Theft Ignition (pats) Immobilizer
- 1 12V DC Power Outlet- Air Filtration

Exterior

- Wheels: 17" Silver Steel- Tires: 245/70R17 BSW A/S
- Full-Size Spare Tire Stored Underbody w/Crankdown
- Black Power Heated Side Mirrors w/Manual Folding
- Tailgate/Rear Door Lock Included w/Power Door Locks
- Ford Co-Pilot360 - Autolamp Auto On/Off Aero-Composite Halogen Daytime Running Lights Preference Setting Headlamps w/Delay-Off
- Regular Box Style- Steel Spare Wheel- Clearcoat Paint
- Black Front Bumper w/Body-Colored Rub Strip/Fascia Accent- Black Rear Step Bumper
- Black Side Windows Trim- Black Door Handles- Fixed Rear Window
- Light Tinted Glass- Variable Intermittent Wipers- Aluminum Panels- Black Grille
- Tailgate Rear Cargo Access- Reverse Opening Rear Doors
- Cargo Lamp w/High Mount Stop Light- Auto High Beam

Safety

- Cloth 40/20/40 Front Seat -inc: 2-way manual driver/passenger adjustment and armrest
- Gauges -inc: Speedometer, Odometer, Voltmeter, Oil Pressure, Engine Coolant Temp, Tachometer, Transmission Fluid Temp, Trip Odometer and Trip Computer
- Power Rear Windows
- Remote Keyless Entry w/Integrated Key Transmitter, Illuminated Entry and Panic Button
- Smart Device Remote Engine Start
- SYNC 4 -inc: 8" LCD capacitive touchscreen w/swipe capability, wireless phone connection, cloud connected, AppLink w/App catalog, 911 Assist, Apple CarPlay and Android Auto compatibility and digital owners manual
- Power 1st Row Windows w/Driver And Passenger 1-Touch Up/Down
- Power Door Locks w/Autolock Feature- Trip Computer- Driver Seat- Passenger Seat
- 60-40 Folding Split-Bench Front Facing Fold-Up Cushion Rear Seat
- Manual Tilt/Telescoping Steering Column
- FordPass Connect 4G Mobile Hotspot Internet Access- Front Cupholder
- Rear Cupholder- Compass- Cruise Control w/Steering Wheel Controls
- Manual Air Conditioning- HVAC -inc: Underseat Ducts- Locking Glove Box
- Interior Trim -inc: Cabback Insulator and Metal-Look Interior Accents
- Full Cloth Headliner- Urethane Gear Shifter Material- Day-Night Rearview Mirror
- Passenger Visor Vanity Mirror
- Mini Overhead Console w/Storage and 1 12V DC Power Outlet - Front Map Lights
- Fade-To-Off Interior Lighting- Full Vinyl/Rubber Floor Covering
- Pickup Cargo Box Lights- Reverse Sensing System
- Instrument Panel Bin, Dashboard Storage, Interior Concealed Storage, Driver / Passenger And Rear Door Bins
- Delayed Accessory Power- Outside Temp Gauge- Analog Appearance
- Lane-Keeping System -inc: lane-keeping alert, lane-keeping aid and driver alert
- Pre-Collision Assist w/Automatic Emergency Braking -inc: pedestrian detection, forward collision warning and dynamic brake support
- Rear View Camera- Seats w/Cloth Back Material
- Manual Adjustable Front Head Restraints and Manual Adjustable Rear Head Restraints

- Perimeter Alarm- Securilock Anti-Theft Ignition (pats) Immobilizer
- 1 12V DC Power Outlet- Air Filtration

Mechanical

- Engine: 3.3L V6 PFDI -inc: auto start-stop technology and flex-fuel capability
- Transmission: Electronic 10-Speed Automatic -inc: selectable drive modes: normal, ECO, sport, tow/haul, slippery and trail
- 3.55 Axle Ratio- GVWR: 6,250 lbs Payload Package- 50 State Emissions
- Rear-Wheel Drive
- 70-Amp/Hr 610CCA Maintenance-Free Battery w/Run Down Protection
- 200 Amp Alternator- Towing Equipment -inc: Trailer Sway Control
- Trailer Wiring Harness- 1905# Maximum Payload- HD Shock Absorbers
- Front Anti-Roll Bar- Electric Power-Assist Speed-Sensing Steering- 23 Gal. Fuel Tank
- Single Stainless Steel Exhaust- Double Wishbone Front Suspension w/Coil Springs
- Solid Axle Rear Suspension w/Leaf Springs
- 4-Wheel Disc Brakes w/4-Wheel ABS, Front And Rear Vented Discs, Brake Assist, Hill Hold Control and Electric Parking Brake
- Post-Collision Braking

Smart Chevrolet

Smart Chevrolet

View this car on our website at 311chevy.com/7204297

Website: 311chevy.com

Phone: [888-601-2426](tel:888-601-2426)

Map: [4417 N Carolina HIGHWAY 704, Madison, NC 27025](#)

