



2021 Chevrolet Corvette 3LT

Our Price \$77,999

View this vehicle on our website at milleniamotors.com



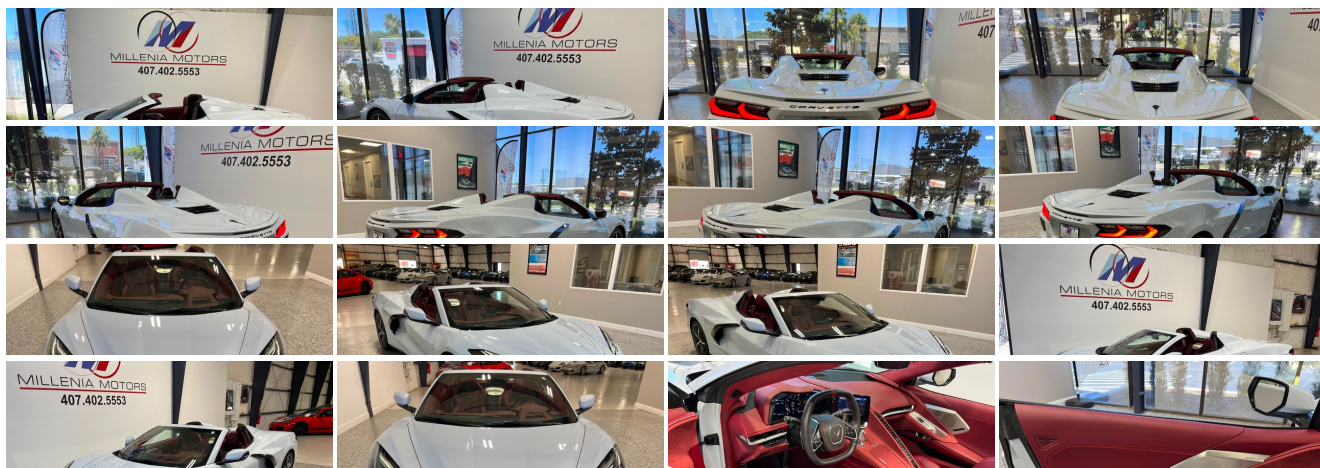
(407) 402-5553

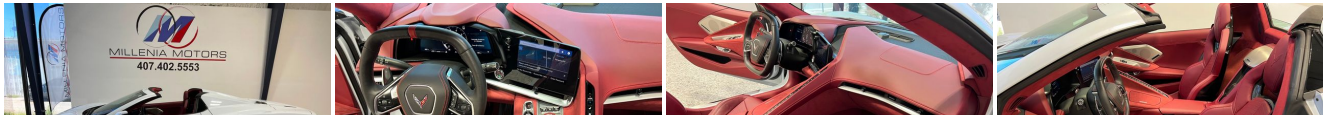
135 Mingo Trail , Longwood, FL 32750

Photos

Details

Contact





Specifications:

Year:	2021
VIN:	1G1YC3D40M5112128
Make:	Chevrolet
Stock:	112128-c2
Model/Trim:	Corvette 3LT
Condition:	Pre-Owned
Body:	Convertible
Exterior:	Ceramic Matrix Gray Metallic
Engine:	ENGINE, 6.2L V8 DI, HIGH-OUTPUT
Interior:	Morello Red Dipped Leather
Transmission:	Automatic
Mileage:	2,342
Drivetrain:	Rear Wheel Drive
Economy:	City 15 / Highway 27

Vehicle Description

3LT!! CONVERTIBLE!! FRONT LIFT!! ONLY 2k MILES!! Carfax certified call or text Oliver [407-402-5553](tel:407-402-5553). Options-
 Front Lift Adjustable Height- \$1,995
 19" Frt & 20" Rear 5 Trident Spoke Machine Spectra Gray Painted Aluminum Whls- \$1,495
 Edge Red Painted Brake Calipers- \$595
 Silver Wheel Center Caps with Stingray Logo & Red Outline- \$250
 MSRP \$84,280

Carfax certified, Autocheck certified, two owner. Florida car. Balance of factory warranty.

Exterior- Extra clean, Interior- Extra clean, non-smoker. This convertible 3LT is a very nice find- extra low miles, great colors, nicely optioned and very well kept. Finished in Ceramic Matrix Gray Metallic with Morello Red Dipped. Includes 2-keys/2-remotes and all owners manuals. Give us a call or send us an email before it's too late. No Hidden Fees, No Hassle Buying. Save Thousands \$\$\$\$. Click On Link To Our Website At www.MILLENIAMOTORS.com For Up To 80 Photos. Trade-Ins Accepted, Ask For Details. Call Oliver Today For Appointment. All prices plus sales tax, tag and titling, and dealer service fee of \$399, which represents cost and profits to the selling dealer for items such as cleaning, inspecting and preparing documents related to the sale.

Installed Options

Interior

- Console, floor 2 covered cup holders, auxiliary power outlet, USB ports, auxiliary input jack and lockable storage
- Defogger, rear-window, electric
- Door locks, power programmable with lockout protection- Floor mats, carpeted
- Keyless Open and Start includes 2 remote transmitters that enable automatic door unlock and open by touching door switch
- Rear Camera Mirror inside rearview auto-dimming with full camera display
- Seats, GT2 bucket- Theft deterrent sensor, vehicle inclination
- Theft deterrent sensor, vehicle interior movement
- Theft-deterrent system, electrical, unauthorized entry, activates the horn
- Theft-deterrent system, vehicle, push button start, immobilizer and audible visual alarm
- Air conditioning, dual-zone automatic climate control individual climate settings for driver and passenger, with outside temperature display
- Air filtration system with pollen filter- Cargo nets, 2
- Chevrolet Connected Access (Subject to terms. See onstar.com or dealer for details.)
- Cruise control, electronic with set and resume speed
- Custom Leather Wrapped Interior Package features leather-wrapped upper instrument panel, door trim panels and console
- Gauge cluster 12" diagonal color with driver information display with multiple selectable

Option Packages

Factory Installed Packages

ENGINE, 6.2L V8 DI, HIGH-OUTPUT
 Variable Valve Timing (VVT), Active Fuel
 Management (AFM) (490 hp [365.4 kW] @ 6450
 rpm, 465 lb-ft of torque [627.8 N-m] @ 5150
 rpm)

CALIPERS, BRIGHT RED-PAINTED
 \$595

FRONT LIFT ADJUSTABLE HEIGHT WITH MEMORY
 \$1,995

LPO, STINGRAY R LOGO WHEEL CENTER CAPS.
 Genuine Corvette Accessory
 \$250

CERAMIC MATRIX GRAY METALLIC

- Gauge cluster, 12" diagonal color with driver information display with multiple selectable modes and gauge configurations
- Head-Up Display color display with 3 modes: tour, sport, track; can display speed, gear, tach, shift lights, turn signals, bright headlamps, turn-by-turn navigation, g-meter, speed limit, lap times
- Lighting, interior, theater dimming
- Memory Driver and Passenger Convenience Package includes steering wheel and outside mirrors plus seat memory for both driver and passenger; key fob or door button activated
- Napa leather seating surfaces with perforated inserts- Oil life monitoring system
- Remote vehicle starter system- Seat adjuster, driver 8-way power
- Seat adjuster, driver power bolster- Seat adjuster, passenger 8-way power
- Seat adjuster, passenger power bolster- Seat adjuster, power driver lumbar control
- Seat adjuster, power passenger lumbar control
- Seat belt color, Black ((HZN/HUF) Natural Dipped interior comes with (3N9) Natural seat belt color; (HTO) Tension Blue/Twilight Blue Dipped interior comes with (3A9) Tension Blue seat belt color; (HT7/HFC) Sky Cool Gray/Strike Yellow interior comes with (3M9) Yellow seat belt color.)
- Seats, heated and vented driver and passenger
- Steering column, power tilt and telescopic
- Steering wheel controls, audio, voice recognition, cruise and Driver Information Center
- Steering wheel, heated- Steering wheel, leather-wrapped
- Sueded Microfiber-Wrapped Upper Interior Trim Package includes headliner, visors, trim above windshield and rear window, and A-pillar trim
- Trunk release, push button open
- Universal Home Remote includes garage door opener, 3-channel programmable, located on driver visor
- Vehicle health management provides advanced warning of vehicle issues
- Visors, driver and passenger illuminated vanity mirrors, covered
- Windows, power with driver and passenger Express-Down/Up
- Wireless Charging for devices

Exterior

- Convertible top, retractable, power-folding hard top painted body-color roof, remote control (down only), includes power glass rear window with integral defogger
- Tires, 245/35ZR19 front and 305/30ZR20 rear, blackwall, all-season, performance
- Carbon Flash Exterior Badge Package
- Exterior accents, Carbon Flash, side vents and front/rear grille accents (Also includes tonneau grille.)
- Glass, Solar-Ray light-tinted- Headlamps, LED
- Mirrors, outside heated, power-adjustable, power-folding driver-side auto-dimming with turn signal indicators
- Wheels, 19" x 8.5" (48.3 cm x 21.6 cm) front and 20" x 11" (50.8 cm x 27.9 cm) rear 5-open-spoke Bright Silver-painted aluminum
- Wipers, front intermittent

Safety

- Console, floor 2 covered cup holders, auxiliary power outlet, USB ports, auxiliary input jack and lockable storage
- Defogger, rear-window, electric
- Door locks, power programmable with lockout protection- Floor mats, carpeted
- Keyless Open and Start includes 2 remote transmitters that enable automatic door unlock and open by touching door switch
- Rear Camera Mirror inside rearview auto-dimming with full camera display
- Seats, GT2 bucket- Theft deterrent sensor, vehicle inclination
- Theft deterrent sensor, vehicle interior movement
- Theft-deterrent system, electrical, unauthorized entry, activates the horn
- Theft-deterrent system, vehicle, push button start, immobilizer and audible visual alarm
- Air conditioning, dual-zone automatic climate control individual climate settings for driver and passenger, with outside temperature display
- Air filtration system with pollen filter- Cargo nets, 2
- Chevrolet Connected Access (Subject to terms. See onstar.com or dealer for details.)
- Cruise control, electronic with set and resume speed
- Custom Leather Wrapped Interior Package features leather-wrapped upper instrument panel, door trim panels and console
- Gauge cluster, 12" diagonal color with driver information display with multiple selectable modes and gauge configurations
- Head-Up Display color display with 3 modes: tour, sport, track; can display speed, gear, tach, shift lights, turn signals, bright headlamps, turn-by-turn navigation, g-meter, speed limit, lap times
- Lighting, interior, theater dimming
- Memory Driver and Passenger Convenience Package includes steering wheel and outside mirrors plus seat memory for both driver and passenger; key fob or door button activated
- Napa leather seating surfaces with perforated inserts- Oil life monitoring system
- Remote vehicle starter system- Seat adjuster, driver 8-way power

3LT PREFERRED EQUIPMENT GROUP

includes standard equipment

MORELLO RED DIPPED, NAPA LEATHER SEATING SURFACES WITH PERFORATED INSERTS

(Full color interior (instrument panel, doors and carpet.))

WHEELS, 19" X 8.5" (48.3 CM X 21.6 CM) FRONT AND 20" X 11" (50.8 CM X 27.9 CM) REAR 5-TRIDENT-SPOKE MACHINED-FACE SPECTRA GRAY-PAINTED ALUMINUM

\$1,495

Option Packages Total

\$4,335

- Seat adjuster, driver power bolster- Seat adjuster, passenger 8-way power
- Seat adjuster, passenger power bolster- Seat adjuster, power driver lumbar control
- Seat adjuster, power passenger lumbar control
- Seat belt color, Black ((HZN/HUF) Natural Dipped interior comes with (3N9) Natural seat belt color; (HTO) Tension Blue/Twilight Blue Dipped interior comes with (3A9) Tension Blue seat belt color; (HT7/HFC) Sky Cool Gray/Strike Yellow interior comes with (3M9) Yellow seat belt color.)
- Seats, heated and vented driver and passenger
- Steering column, power tilt and telescopic
- Steering wheel controls, audio, voice recognition, cruise and Driver Information Center
- Steering wheel, heated- Steering wheel, leather-wrapped
- Sueded Microfiber-Wrapped Upper Interior Trim Package includes headliner, visors, trim above windshield and rear window, and A-pillar trim
- Trunk release, push button open
- Universal Home Remote includes garage door opener, 3-channel programmable, located on driver visor
- Vehicle health management provides advanced warning of vehicle issues
- Visors, driver and passenger illuminated vanity mirrors, covered
- Windows, power with driver and passenger Express-Down/Up
- Wireless Charging for devices

Mechanical

- Differential, mechanical limited-slip
- Transmission, 8-speed dual clutch, includes manual and auto modes
- Brakes, 4-wheel antilock, 4-wheel disc 12.6" (321 mm) front and 13.3" (339 mm) rear brake rotors
- Calipers, Black-painted
- Engine, 6.2L V8 DI, high-output Variable Valve Timing (VVT), Active Fuel Management (AFM) (490 hp [365.4 kW] @ 6450 rpm, 465 lb-ft of torque [627.8 N-m] @ 5150 rpm)
- Exhaust, aluminized stainless-steel with stainless-steel tips - Frame, aluminum structure
- Rear wheel drive- Steering, power, magnetic rack-and-pinion, variable assist
- Suspension, Corvette standard

We at Millenia Motors Inc., are in no way affiliated with Porsche® Cars North America. We are not a Porsche® Dealer, nor do we represent ourselves as a Porsche® Franchise Dealership.

Millenia Motors

Millenia Motors

View this car on our website at milleniamotors.com/7204278

Website: milleniamotors.com

Phone: (407) 402-5553

Map: [135 Mingo Trail, Longwood, FL 32750](#)

