

2023 Ford F-150 XLT

View this car on our website at askjorgelopez.com/7203603/ebrochure

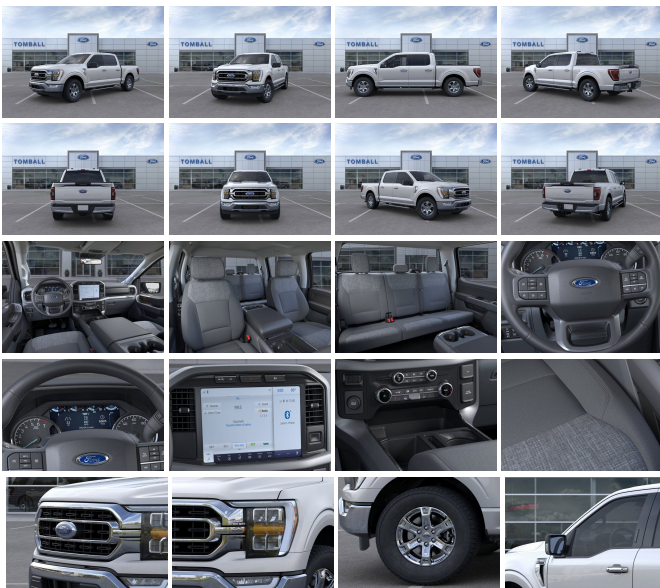


Our Price **\$53,790**

Retail Value **\$55,790**

Specifications:

Year:	2023
VIN:	1FTEW1CP7PKE59124
Make:	Ford
Stock:	KE59124
Model/Trim:	F-150 XLT
Condition:	New
Body:	Pickup Truck
Exterior:	ICONIC SILVER METALLIC
Engine:	ENGINE: 2.7L V6 ECOBOOST
Interior:	CLOTH 40/CONSOLE/40 MEDIUM DARK SLATE
Transmission:	Automatic w/OD
Mileage:	780
Drivetrain:	Rear Wheel Drive
Economy:	City 18 / Highway 25

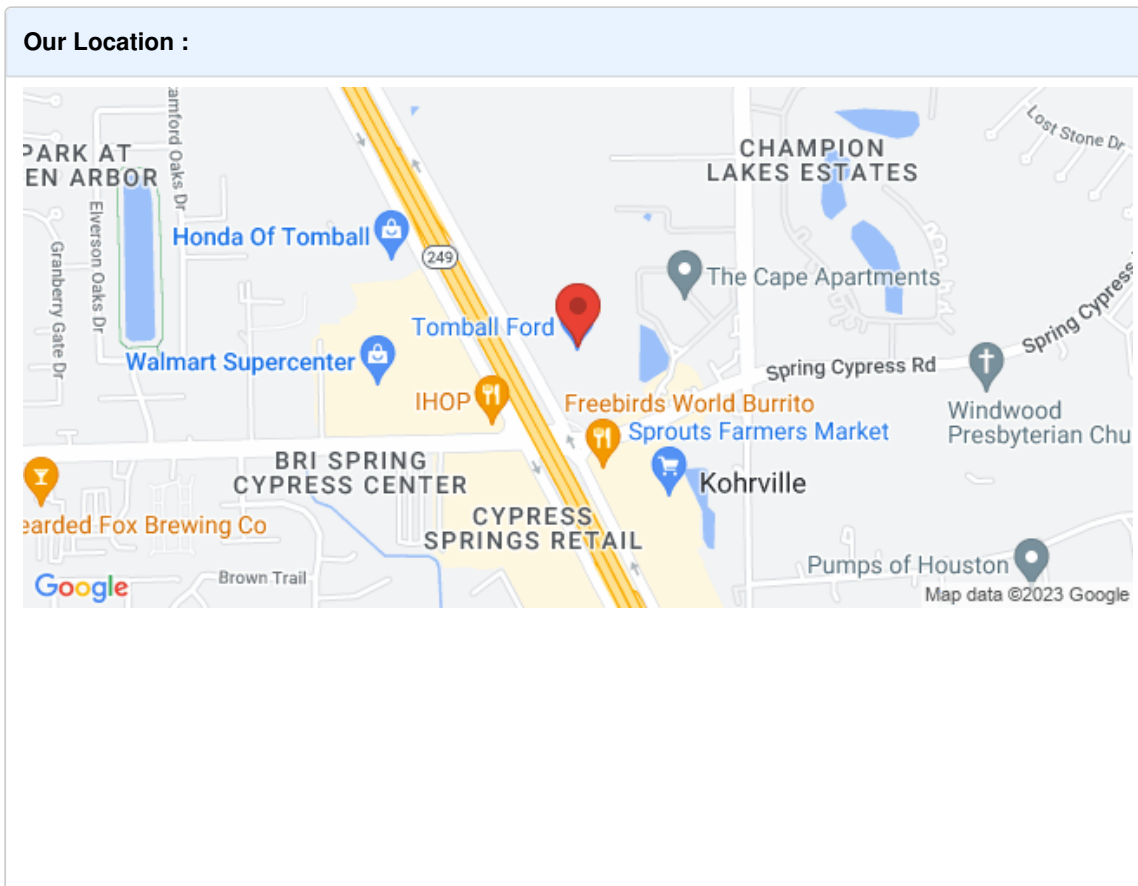


"This vehicle exudes quality! You can't go wrong with this dependable 2023 Ford F-150. Tire Specific Low Tire Pressure Warning, Side Impact Beams, Safety Canopy System Curtain 1st And 2nd Row Airbags, Reverse Sensing System Rear Parking Sensors, Rear Child Safety Locks.*Fully-Loaded with Additional Options*EQUIPMENT GROUP 302A HIGH -inc: Class IV Trailer Hitch Receiver, towing capability up to TBD lbs, on 3.3L V6 PFDI engine (99B) and 2.7L EcoBoost engine (99P) or up to TBD lbs, on 3.5L EcoBoost engine (998) and 5.0L V8 engine (995), 7/4-pin connector, class IV trailer hitch receiver, smart trailer tow connector (BLIS w/trailer tow coverage where BLIS is available), XLT Chrome Appearance Package, lower grille trim, Chrome Single-Tip Exhaust, Chrome Door & Tailgate Handles w/Body-Color Bezel, bezel on side doors and black on tailgate, Wheels: 18" Chrome-Like PVD, 2-Bar Style Grille w/Chrome 2 Minor Bars, silver painted surround and black background mesh, Bright Polished Step Bars, Tires: 265/60R18 BSW A/S, Zone Lighting, Intelligent Access w/Push Button Start, approach detection, SecuriCode Drivers Side Keyless-Entry Keypad, 10-Way Power Driver & Passenger Seats, Multi-adjustable power front passenger seat and power lumbar driver/passenger, Onboard 400W Outlet, Replaces two (2) front US, ENGINE: 2.7L V6 ECOBOOST -inc: GVWR: 6,400 lbs Payload Package, ENGINE: 2.7L V6 ECOBOOST -inc: auto start-stop technology, GVWR: 6,400 lbs Payload Package, EQUIPMENT GROUP 302A HIGH -inc: Class IV Trailer Hitch Receiver, towing capability up to TBD lbs, on 3.3L V6 PFDI engine (99B) and 2.7L EcoBoost engine (99P) or up to TBD lbs, on 3.5L EcoBoost engine (998) and 5.0L V8 engine (995), 7/4-pin connector, class IV trailer hitch receiver, smart trailer tow connector (

BLIS w/trailer tow coverage where BLIS is available), XLI Chrome Appearance Package, lower grille trim, Chrome Single-Tip Exhaust, Chrome Door & Tailgate Handles w/Body-Color Bezel, bezel on side doors and black on tailgate, Wheels: 18" Chrome-Like PVD, 2-Bar Style Grille w/Chrome 2 Minor Bars, silver painted surround and black background mesh, Bright Polished Step Bars, Tires: 265/60R18 BSW A/S, Zone Lighting, Intelligent Access w/Push Button Start, approach detection, SecuriCode Drivers Side Keyless-Entry Keypad, 10-Way Power Driver & Passenger Seats, Multi-adjustable power front passenger seat and power lumbar driver/passenger, Onboard 400W Outlet, Replaces two (2) front US, ENGINE: 2.7L V6 ECOBOOST -inc: GVWR: 6,400 lbs Payload Package, ENGINE: 2.7L V6 ECOBOOST -inc: auto start-stop technology, GVWR: 6,400 lbs Payload Package, 3.55 AXLE RATIO (STD), Wheels: 17" Silver Painted Aluminum, Variable Intermittent Wipers, Urethane Gear Shifter Material.* Stop By Today *Stop by Tomball Ford located at 22702 Tomball Parkway, Tomball, TX 77375 for a quick visit and a great vehicle!"

2023 Ford F-150 XLT

Ask Jorge Lopez - (866) 773-1396 - View this car on our website at askjorgelopez.com/7203603/ebrochure



2023 Ford F-150 XLT

Ask Jorge Lopez - (866) 773-1396 - View this car on our website at askjorgelopez.com/7203603/ebrochure

Installed Options

Interior

- Cloth 40/20/40 Front Seat -inc: manual driver/passenger lumbar, folding armrest cupholders and storage
- 4-Way Driver Seat -inc: Manual Recline and Fore/Aft Movement
- 4-Way Passenger Seat -inc: Manual Recline and Fore/Aft Movement
- 60-40 Folding Split-Bench Front Facing Fold-Up Cushion Rear Seat
- Manual Tilt/Telescoping Steering Column
- Gauges -inc: Speedometer, Odometer, Voltmeter, Oil Pressure, Engine Coolant Temp, Tachometer, Transmission Fluid Temp, Trip Odometer and Trip Computer

Option Packages

Factory Installed Packages

ENGINE: 2.7L V6 ECOBOOST	\$1,285
Option Packages Total	\$1,285

- Tachometer, Transmission Fluid Temp, Trip Odometer and Trip Computer
- Power Rear Windows- FordPass Connect 4G Mobile Hotspot Internet Access
- Front Cupholder- Rear Cupholder- Compass
- Remote Keyless Entry w/Integrated Key Transmitter, Illuminated Entry and Panic Button
- Cruise Control w/Steering Wheel Controls- Manual Air Conditioning
- HVAC -inc: Underseat Ducts- Locking Glove Box- Full Cloth Headliner
- Urethane Gear Shifter Material
- Interior Trim -inc: Metal-Look Instrument Panel Insert, Cabback Insulator and Chrome/Metal-Look Interior Accents
- Day-Night Rearview Mirror- Driver And Passenger Visor Vanity Mirrors
- Mini Overhead Console w/Storage and 1 12V DC Power Outlet
- Fade-To-Off Interior Lighting- Front And Rear Map Lights
- Full Carpet Floor Covering -inc: Carpet Front And Rear Floor Mats
- Pickup Cargo Box Lights- Smart Device Remote Engine Start
- SYNC 4 -inc: 8" LCD capacitive touchscreen w/swipe capability, wireless phone connection, cloud connected, AppLink w/App catalog, 911 Assist, Apple CarPlay and Android Auto compatibility and digital owners manual
- Instrument Panel Bin, Dashboard Storage, Interior Concealed Storage, Driver / Passenger And Rear Door Bins and Locking 1st Row Underseat Storage
- Power 1st Row Windows w/Driver And Passenger 1-Touch Up/Down
- Delayed Accessory Power- Power Door Locks w/Autolock Feature- Trip Computer
- Outside Temp Gauge- Analog Appearance- 2 Seatback Storage Pockets
- Seats w/Cloth Back Material
- Manual Adjustable Front Head Restraints and Manual Adjustable Rear Head Restraints
- Perimeter Alarm- Securilock Anti-Theft Ignition (pats) Immobilizer
- 1 12V DC Power Outlet- Air Filtration

Exterior

- Wheels: 17" Silver Painted Aluminum- Tires: 245/70R17 BSW A/S- Regular Box Style
- Steel Spare Wheel- Full-Size Spare Tire Stored Underbody w/Crankdown
- Clearcoat Paint- Chrome Front Bumper w/Body-Colored Rub Strip/Fascia Accent
- Chrome Rear Step Bumper- Black Side Windows Trim- Black Door Handles
- Black Power Heated Side Mirrors w/Manual Folding- Fixed Rear Window w/Defroster
- Variable Intermittent Wipers- Deep Tinted Glass- Aluminum Panels
- Black Grille w/Chrome Surround- Tailgate Rear Cargo Access
- Tailgate/Rear Door Lock Included w/Power Door Locks
- Cargo Lamp w/High Mount Stop Light
- Ford Co-Pilot360 - Autolamp Auto On/Off Aero-Composite Halogen Auto High-Beam Daytime Running Lights Preference Setting Headlamps w/Delay-Off
- Front Fog Lamps- Perimeter/Approach Lights- Headlights-Automatic Highbeams

Safety

- Cloth 40/20/40 Front Seat -inc: manual driver/passenger lumbar, folding armrest cupholders and storage
- 4-Way Driver Seat -inc: Manual Recline and Fore/Aft Movement
- 4-Way Passenger Seat -inc: Manual Recline and Fore/Aft Movement
- 60-40 Folding Split-Bench Front Facing Fold-Up Cushion Rear Seat
- Manual Tilt/Telescoping Steering Column
- Gauges -inc: Speedometer, Odometer, Voltmeter, Oil Pressure, Engine Coolant Temp, Tachometer, Transmission Fluid Temp, Trip Odometer and Trip Computer
- Power Rear Windows- FordPass Connect 4G Mobile Hotspot Internet Access
- Front Cupholder- Rear Cupholder- Compass
- Remote Keyless Entry w/Integrated Key Transmitter, Illuminated Entry and Panic Button
- Cruise Control w/Steering Wheel Controls- Manual Air Conditioning
- HVAC -inc: Underseat Ducts- Locking Glove Box- Full Cloth Headliner
- Urethane Gear Shifter Material
- Interior Trim -inc: Metal-Look Instrument Panel Insert, Cabback Insulator and Chrome/Metal-Look Interior Accents
- Day-Night Rearview Mirror- Driver And Passenger Visor Vanity Mirrors
- Mini Overhead Console w/Storage and 1 12V DC Power Outlet
- Fade-To-Off Interior Lighting- Front And Rear Map Lights
- Full Carpet Floor Covering -inc: Carpet Front And Rear Floor Mats
- Pickup Cargo Box Lights- Smart Device Remote Engine Start
- SYNC 4 -inc: 8" LCD capacitive touchscreen w/swipe capability, wireless phone connection, cloud connected, AppLink w/App catalog, 911 Assist, Apple CarPlay and Android Auto compatibility and digital owners manual
- Instrument Panel Bin, Dashboard Storage, Interior Concealed Storage, Driver / Passenger And Rear Door Bins and Locking 1st Row Underseat Storage
- Power 1st Row Windows w/Driver And Passenger 1-Touch Up/Down
- Delayed Accessory Power- Power Door Locks w/Autolock Feature- Trip Computer
- Outside Temp Gauge- Analog Appearance- 2 Seatback Storage Pockets
- Seats w/Cloth Back Material
- Manual Adjustable Front Head Restraints and Manual Adjustable Rear Head Restraints

- Perimeter Alarm- Securilock Anti-Theft Ignition (pats) Immobilizer
- 1 12V DC Power Outlet- Air Filtration

Mechanical

- Engine: 3.3L V6 PFDI -inc: auto start-stop technology and flex-fuel capability
 - Transmission: Electronic 10-Speed Automatic -inc: selectable drive modes: normal, ECO, sport, tow/haul, slippery and trail
 - 3.55 Axle Ratio- GVWR: 6,250 lbs Payload Package- 50 State Emissions
 - Rear-Wheel Drive- 70-Amp/Hr 610CCA Maintenance-Free Battery w/Run Down Protection
 - 200 Amp Alternator- Towing Equipment -inc: Trailer Sway Control- Trailer Wiring Harness
 - 1785# Maximum Payload- HD Shock Absorbers- Front Anti-Roll Bar
 - Electric Power-Assist Speed-Sensing Steering- Single Stainless Steel Exhaust
 - 26 Gal. Fuel Tank- Double Wishbone Front Suspension w/Coil Springs
 - Solid Axle Rear Suspension w/Leaf Springs
 - 4-Wheel Disc Brakes w/4-Wheel ABS, Front And Rear Vented Discs, Brake Assist, Hill Hold Control and Electric Parking Brake
-

Ask Jorge Lopez

askjorgelopez.com

(866) 773-1396

22702 Tomball Parkway

Tomball, TX 77375

© 2023 AutoRevo - All rights reserved. - Powered by AutoRevo