

# 2021 Toyota Tacoma TRD Off Road

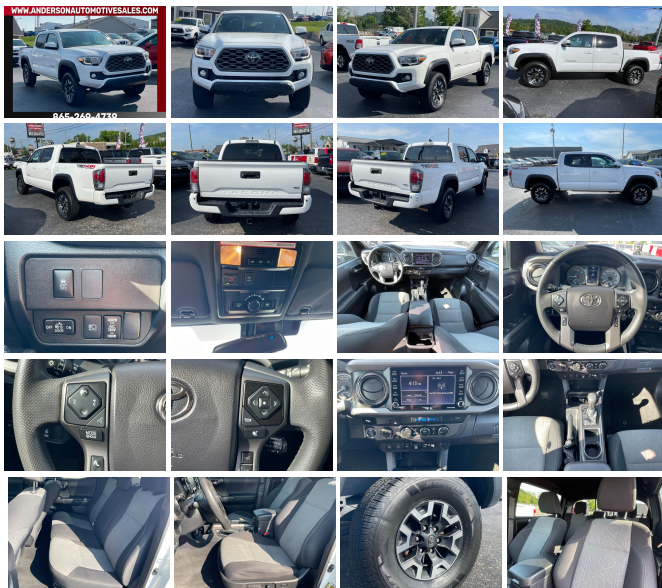
View this car on our website at [andersonautomotivesales.com/7203342/ebrochure](http://andersonautomotivesales.com/7203342/ebrochure)



Our Price **\$41,995**

## Specifications:

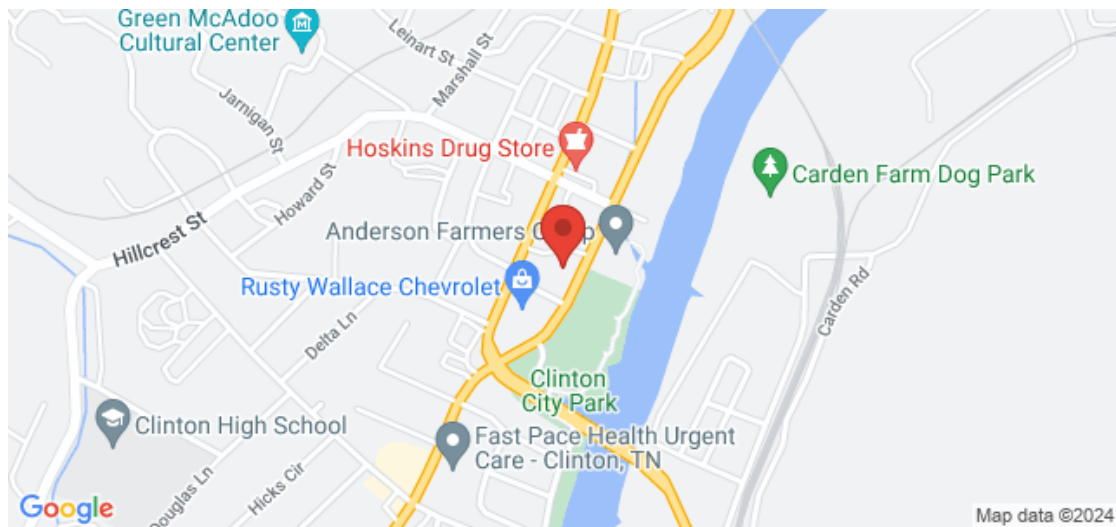
<b>Year:</b>	2021
<b>VIN:</b>	5TFCZ5AN3MX259153
<b>Make:</b>	Toyota
<b>Stock:</b>	A1273
<b>Model/Trim:</b>	Tacoma TRD Off Road
<b>Condition:</b>	Pre-Owned
<b>Body:</b>	Pickup Truck
<b>Exterior:</b>	WHITE
<b>Engine:</b>	Engine: 3.5L Atkinson-Cycle V6 -inc: VVT-iW wider intake and VVT-i exhaust
<b>Interior:</b>	BLACK
<b>Transmission:</b>	Automatic w/OD
<b>Mileage:</b>	45,646
<b>Drivetrain:</b>	4 Wheel Drive
<b>Economy:</b>	City 18 / Highway 22



2021 Toyota Tacoma TRD Off Road

Anderson Automotive Sales - 865-269-4739 - View this car on our website at [andersonautomotivesales.com/7203342/ebrochure](http://andersonautomotivesales.com/7203342/ebrochure)

## Our Location :



2021 Toyota Tacoma TRD Off Road

Anderson Automotive Sales - 865-269-4739 - View this car on our website at [andersonautomotivesales.com/7203342/ebrochure](http://andersonautomotivesales.com/7203342/ebrochure)

## Installed Options

### Interior

- Gauges -inc: Speedometer, Odometer, Engine Coolant Temp, Tachometer, Trip Odometer and Trip Computer
- Power Rear Windows
- Remote Keyless Entry w/Integrated Key Transmitter, Illuminated Entry, Illuminated Ignition Switch and Panic Button
- Smart Key w/Push Button Start- Fabric Seat Trim (FD)
- Day-Night Auto-Dimming Rearview Mirror
- Power 1st Row Windows w/Driver 1-Touch Down- Power Door Locks w/Autolock Feature
- Trip Computer- Perimeter Alarm
- Front Seats -inc: 8-way power adjustable driver seat w/lumbar support and 4-way manual passenger seat
- Driver Seat- Passenger Seat
- 60/40 Folding Split-Bench Front Facing Flip Forward Cushion/Seatback Rear Seat
- Manual Tilt/Telescoping Steering Column
- Wi-Fi Connect with up to 2GB within 3-month trial Mobile Hotspot Internet Access
- Leather/Metal-Look Steering Wheel- Front Cupholder- Rear Cupholder
- Cruise Control w/Steering Wheel Controls- Distance Pacing- Manual Air Conditioning
- HVAC -inc: Underseat Ducts- Locking Glove Box- Driver Foot Rest- Full Cloth Headliner
- Cloth Door Trim Insert
- Interior Trim -inc: Metal-Look Door Panel Insert, Metal-Look Console Insert and Chrome/Metal-Look Interior Accents
- Leather/Metal-Look Gear Shifter Material- Vanity w/Driver And Passenger Auxiliary Mirror
- Full Floor Console w/Covered Storage, Mini Overhead Console w/Storage and 2 12V DC Power Outlets
- Front Map Lights- Fade-To-Off Interior Lighting- Full Carpet Floor Covering
- Instrument Panel Bin, Interior Concealed Storage, Driver / Passenger And Rear Door Bins and 2nd Row Underseat Storage
- Delayed Accessory Power- 120V/400W Deck Mounted AC Power- Outside Temp Gauge
- Analog Appearance- Seats w/Cloth Back Material- Front Center Armrest
- Manual Anti-Whiplash Adjustable Front Head Restraints and Manual Adjustable Rear Head

---

## Restraints

- Engine Immobilizer- 2 12V DC Power Outlets- Air Filtration
- 

## Exterior

- Body-Colored Power Heated Side Mirrors w/Manual Folding and Turn Signal Indicator
  - Manual Tailgate/Rear Door Lock
  - Auto Off Projector Beam Halogen Daytime Running Auto High-Beam Headlamps
  - Front Fog Lamps- Wheels: 16" x 7J Machined Contrast Alloy - Tires: P265/70R16 AS
  - Regular Composite Box Style- Steel Spare Wheel
  - Full-Size Spare Tire Stored Underbody w/Crankdown- Clearcoat Paint w/Decal
  - Chrome Rear Step Bumper w/Black Rub Strip/Fascia Accent
  - Body-Colored Front Bumper w/Black Rub Strip/Fascia Accent and 1 Tow Hook
  - Black Side Windows Trim, Black Front Windshield Trim and Black Rear Window Trim
  - Body-Colored Door Handles- Black Overfenders- Variable Intermittent Wipers
  - Power Sliding Rear Window w/Privacy Glass- Fully Galvanized Steel Panels
  - Black Grille w/Chrome Surround- Tailgate Rear Cargo Access- Integrated Storage
  - Headlights-Automatic Highbeams
- 

## Safety

- Gauges -inc: Speedometer, Odometer, Engine Coolant Temp, Tachometer, Trip Odometer and Trip Computer
  - Power Rear Windows
  - Remote Keyless Entry w/Integrated Key Transmitter, Illuminated Entry, Illuminated Ignition Switch and Panic Button
  - Smart Key w/Push Button Start- Fabric Seat Trim (FD)
  - Day-Night Auto-Dimming Rearview Mirror
  - Power 1st Row Windows w/Driver 1-Touch Down - Power Door Locks w/Autolock Feature
  - Trip Computer- Perimeter Alarm
  - Front Seats -inc: 8-way power adjustable driver seat w/lumbar support and 4-way manual passenger seat
  - Driver Seat- Passenger Seat
  - 60-40 Folding Split-Bench Front Facing Flip Forward Cushion/Seatback Rear Seat
  - Manual Tilt/Telescoping Steering Column
  - Wi-Fi Connect with up to 2GB within 3-month trial Mobile Hotspot Internet Access
  - Leather/Metal-Look Steering Wheel- Front Cupholder- Rear Cupholder
  - Cruise Control w/Steering Wheel Controls- Distance Pacing- Manual Air Conditioning
  - HVAC -inc: Underseat Ducts- Locking Glove Box- Driver Foot Rest- Full Cloth Headliner
  - Cloth Door Trim Insert
  - Interior Trim -inc: Metal-Look Door Panel Insert, Metal-Look Console Insert and Chrome/Metal-Look Interior Accents
  - Leather/Metal-Look Gear Shifter Material- Vanity w/Driver And Passenger Auxiliary Mirror
  - Full Floor Console w/Covered Storage, Mini Overhead Console w/Storage and 2 12V DC Power Outlets
  - Front Map Lights- Fade-To-Off Interior Lighting- Full Carpet Floor Covering
  - Instrument Panel Bin, Interior Concealed Storage, Driver / Passenger And Rear Door Bins and 2nd Row Underseat Storage
  - Delayed Accessory Power- 120V/400W Deck Mounted AC Power- Outside Temp Gauge
  - Analog Appearance- Seats w/Cloth Back Material- Front Center Armrest
  - Manual Anti-Whiplash Adjustable Front Head Restraints and Manual Adjustable Rear Head Restraints
  - Engine Immobilizer- 2 12V DC Power Outlets- Air Filtration
- 

## Mechanical

- Driver Selectable Rear Locking Differential- Electro-Mechanical Limited Slip Differential
  - Engine: 3.5L Atkinson-Cycle V6 -inc: VVT-iW wider intake and VVT-i exhaust
  - Transmission: 6-Speed Automatic -inc: Electronically controlled w/intelligence
  - Axle Ratio: 3.91- GVWR: 5,600 lbs- Transmission w/Oil Cooler- Electronic Transfer Case
  - Part-Time Four-Wheel Drive- Engine Oil Cooler- Battery w/Run Down Protection
  - 130 Amp Alternator- Class IV Towing Equipment -inc: Hitch and Trailer Sway Control
  - Trailer Wiring Harness- 1 Skid Plate- 1155# Maximum Payload- Front Anti-Roll Bar
  - Bilstein Brand Name Shock Absorbers- Off-Road Suspension
  - Hydraulic Power-Assist Speed-Sensing Steering- 21.1 Gal. Fuel Tank
  - Single Stainless Steel Exhaust- Auto Locking Hubs
  - Double Wishbone Front Suspension w/Coil Springs
  - Solid Axle Rear Suspension w/Leaf Springs
  - Front Disc/Rear Drum Brakes w/4-Wheel ABS, Front Vented Discs, Brake Assist, Hill Descent Control and Hill Hold Control
-



[andersonautomotivesales.com](http://andersonautomotivesales.com)

865-269-4739

135 S Charles G Seivers Blvd  
Clinton, TN 37716

© 2024 AutoRevo - All rights reserved. - Powered by AutoRevo