

2012 Chevrolet Silverado 1500 LT

View this car on our website at mikesautosales931.us/7203150/ebrochure



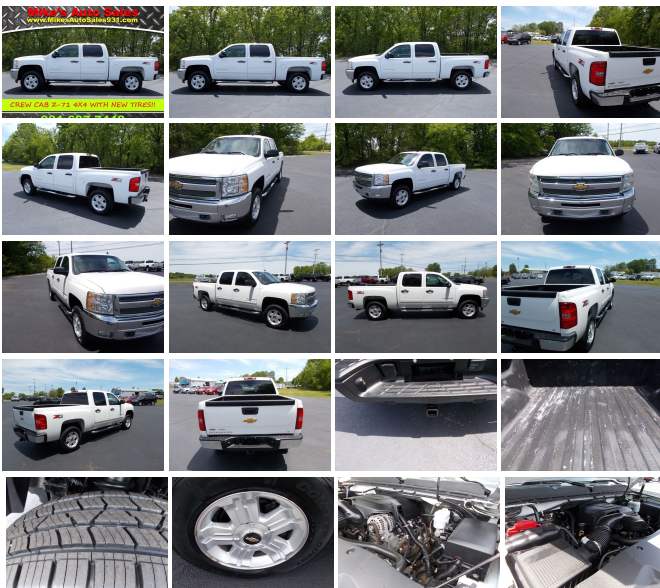
Our Price **\$14,900**

Specifications:

Year: 2012
VIN: 3GCPKSE74CG112102
Make: Chevrolet
Stock: 31823
Model/Trim: Silverado 1500 LT
Condition: Pre-Owned
Body: Pickup Truck
Exterior: Summit White
Engine: ENGINE, VORTEC 5.3L VARIABLE VALVE TIMING V8 SFI FLEXFUEL WITH ACTIVE FUEL MANAGEMENT
Interior: Ebony Cloth
Transmission: TRANSMISSION, 6-SPEED AUTOMATIC, ELECTRONICALLY CONTROLLED
Mileage: 223,591
Drivetrain: 4 Wheel Drive
Economy: City 15 / Highway 21

VIN# 3GCPKSE74CG112102

**** CLICK THE FOLLOWING LINK (www.MikesAutoSales931.com) TO BE DIRECTED TO OUR WEBSITE FOR MORE INFO, PHOTOS AND TO VERIFY AVAILABILITY OR FEEL FREE TO CALL OR TEXT 931-607-7448!! WE DO NOT OFFER ANY FINANCING OR PAYMENT OPTIONS!! WE ARE OPEN 8 TILL 5 DURING THE WEEK AND 8 TILL 12 ON SATURDAY!! *****NICE CLEAN TRADE IN AT LOCAL DODGE DEALER, CARFAX CERTIFIED!! 2012 CHEVY SILVERADO 1500 CREW CAB LT Z-71 4X4 WELL EQUIPPED WITH OPTIONS, POWERED BY A LONG LASTING 5.3 VORTEC V-8 ENGINE WITH AUTOMATIC TRANSMISSION, RIDING ON LIKE NEW TIRES PLUS RUNS AND DRIVES GREAT!! GREAT AFFORDABLE AND DEPENDABLE TRUCK FOR COMMUTING OR KID'S FIRST RIDE!! NO DOC FEES!! ALL TENNESSEE RESIDENTS ARE REQUIRED TO PAY SALES TAX IN ADDITION TO THE AGREED UPON SALES PRICE!! Unless this vehicle has Factory Warranty remaining, this vehicle is being sold as is, where is with no warranty, expressed written or implied. The seller shall not be responsible for the correct description, authenticity, genuineness, or defects herein, and makes no warranty in connection therewith. We do not sell new vehicles, therefore normal wear and tear should be anticipated. No allowance or set aside will be made on account of any incorrectness, imperfection, defect or damage. Any descriptions or representations are for identification purposes only and are not to be construed as a warranty of any type. It is the responsibility of the buyer to have thoroughly inspected the vehicle, and to have satisfied himself or herself as to the condition and value and to bid based upon that judgment



as to the condition and value and to bid based upon that judgment solely. The seller shall and will make every reasonable effort to disclose any known defects associated with this vehicle at the buyer's request prior to the close of sale. Seller assumes no responsibility for any repairs regardless of any oral statements about the vehicle. Call 931-684-8671 or go to www.mikesautosales931.com FOR MORE INFORMATION AND ADDITIONAL PHOTOS. Advertised price does not include tax, title or license.

Mike's Auto Sales is a local owned dealership that has been in business at the same location since first opening our doors in 1981. We specialize in Diesel and 4x4 Trucks plus pride ourselves on offering for sale the best quality used Cars, Vans, Suv's, and Trucks of all the dealers in Middle Tennessee. Drop by our dealership or call ahead if you would like to schedule an appointment. Feel free to compare our prices against the prices of other automobile dealerships in the area. Whether you are planning to buy now or will be buying in the future, Mike's Auto Sales offers the best selection of used Cars, Vans, SUVs and Trucks of any of the car lots in the area plus great prices; and our quality, sales and satisfied customers prove it!

From our convenient location at 1664 Fairfield Pk. Shelbyville, TN, we serve Murfreesboro, Franklin, Tullahoma, Winchester, Spring Hill, Nashville, Lebanon, Clarksville, Memphis, Jackson and the entire State of Tennessee. We also have a large customer base in the states of Alabama, Georgia, Kentucky, Illinois, Arkansas, Texas, California, Hawaii, Missouri, Mississippi, North Carolina, South Carolina, Virginia, West Virginia, New York, Washington, Wisconsin and literally all the 50 States plus several other Foreign Countries that we have helped find great pre-owned vehicles. Stop in today and See for yourself why dealing with us really is a new way to buy a vehicle! At our dealership we work very hard to accurately describe our vehicles through text descriptions and elaborate photos. When you purchase a pre-owned vehicle it is not a new vehicle. Any used vehicle can have normal wear and blemishes. Before placing a bid please read the descriptions thoroughly and view all pictures.

2012 Chevrolet Silverado 1500 LT

Mike's Auto Sales - 9316848671 - View this car on our website at mikesautosales931.us/7203150/ebrochure

Vehicle History Report : as Of 04/26/2024

CARFAX

Snapshot

2012 CHEVROLET SILVERADO 1500 LT



No accidents or damage reported to CARFAX



7 Service history records



5 Previous owners



Personal vehicle



Last owned in Alabama



223,603 Last reported odometer reading



FREE CARFAX Report

See the full CARFAX Report for additional information

*carfax Snapshot is a reflection of available information on the date the report was pulled. carfax is constantly being updated with new information and is subject to change at any time.

Our Location :



2012 Chevrolet Silverado 1500 LT

Mike's Auto Sales - 9316848671 - View this car on our website at mikesautosales931.us/7203150/ebrochure

Installed Options

Interior

- Door locks, power includes Remote Keyless Entry
- Air conditioning, single-zone manual front climate control
- Assist handle, front passenger (Also includes rear assist handles in the headliner on Extended and Crew Cab Models.)
- Coat hooks, rear driver and passenger side
- Cruise control, electronic with set and resume speed, located on steering wheel
- Cup holders, front (Also includes rear cupholders on Extended and Crew Cab models.)
- Driver Information Center with odometer, trip odometer and message center (monitors numerous systems depending on vehicle equipment level including low fuel, turn signal "on", transmission temperature and oil change notification) (Driver Information Center controls are operated through the trip odometer button unless (UK3) steering wheel mounted audio controls is ordered. On 1LT, 1SF and 1LZ, includes 8-point compass and outside temperature.)
- Floor covering, color-keyed carpeting with rubberized vinyl floor mats (Extended and Crew Cab models also include rear floor mats) (May be substituted with (BG9) Black rubberized vinyl floor covering.)
- Instrumentation, analog with speedometer, odometer, fuel level, engine temperature, and tachometer (Includes voltmeter and oil pressure indicators.)
- Lighting, interior with dome and reading lights, illuminated entry feature and backlit instrument panel switches

Option Packages

Factory Installed Packages

ENGINE, VORTEC 5.3L VARIABLE VALVE TIMING V8 SFI FLEXFUEL WITH ACTIVE FUEL MANAGEMENT

capable of running on unleaded or up to 85% ethanol (with gas - 315 hp [234.8 kW] @ 5200 rpm, 335 lb-ft of torque [452.2 N-m] @ 4000 rpm), aluminum block **\$825**

TRANSMISSION, 6-SPEED AUTOMATIC, ELECTRONICALLY CONTROLLED

with overdrive and tow/haul mode

AIR CONDITIONING, DUAL-ZONE AUTOMATIC CLIMATE CONTROL

with individual climate settings for driver and right-front passenger

DI HETOTU EOB DUONE

- Mirror, inside rearview manual day/night
- Power outlets, 2 auxiliary instrument panel-mounted with covers, 12-volt
- Remote vehicle starter prep package includes Remote Keyless Entry with 2 transmitters, panic button and content theft alarm (To enable remote start capability, new key fobs and vehicle reprogramming are required. Please see dealer for details. Remote Keyless Entry does not lock/unlock tailgate.)
- Seat adjuster, manual lumbar control on the driver-side- Seat trim, Premium Cloth
- Seat, rear 60/40 folding bench (folds up), 3-passenger, folding (includes child seat top tether anchor) (Requires Extended or Crew Cab Models.)
- Seats, front 40/20/40 split-bench, 3-passenger, driver and front passenger manual reclining center fold-down armrest with storage, lockable storage compartment in seat cushion (includes auxiliary power outlet), adjustable outboard head restraints and storage pockets on Extended and Crew Cab models
- Steering column, Tilt-Wheel, adjustable with brake/transmission shift interlock
- Steering wheel, leather-wrapped with theft-deterrent locking feature
- Visors, driver and front passenger, sliding with clip and illuminated vanity mirror on driver and passenger-side, Opal Gray-colored
- Warning tones headlamp on, key-in-ignition, driver and passenger buckle up reminder and turn signal on
- Windows, power with driver Express-Down

Exterior

- Tires, P265/70R17 all-season, blackwall includes a blackwall spare tire (Requires 4WD models. Not available with (Z71) Off-Road Suspension Package or (WEA) Z71 Enhanced Package.)
- Wheels, 4 - 17" x 7.5" (43.2 cm x 19.1 cm) 6-lug chrome-styled steel includes chrome center caps (spare wheel will not cosmetically match the other 4 wheels) (Upgradeable to (P46) 4 - 17" x 7.5" (43.2 cm x 19.1 cm) 6-lug aluminum wheels, (N87) 4 - 18" x 8" (45.7 cm x 20.3 cm) aluminum wheels or (S80) 4 - 20" x 8.5" (50.8 cm x 21.6 cm) chrome clad aluminum wheels. Not available with (Z71) Off-Road Suspension Package.)
- Air dam, Black
- Bumper, front chrome (Includes chrome bumper bar and end caps with painted silver lower section.)
- Bumper, rear chrome, step-style with pad- Door handles, Black
- Glass, Solar-Ray deep-tinted (all windows except light-tinted glass on windshield and driver- and front passenger-side glass) (With Regular Cab models, includes rear window. With Extended Cab models, includes rear and rear quarter windows. With Crew Cab models or (C49) rear-window defogger, includes light-tinted rear window.)
- Grille, chrome surround
- Headlamps, dual halogen composite with automatic exterior lamp control and flash-to-pass feature
- Lamps, dual cargo area lamps
- Mirrors, outside heated power-adjustable, Black, manual-folding (Upgradeable to (DPN) outside vertical camper mirrors.)
- Moldings, bodyside, body-colored (Moldings are deleted if any SEO paint is ordered.)
- Pickup box, Fleetside
- Spare tire lock keyed cylinder lock that utilizes same key as ignition and door
- Tire carrier, outside spare, winch-type mounted under frame at rear
- Wheel, 17" (43.2 cm) steel spare (spare wheel will not cosmetically match the other 4 wheels)
- Wipers, front intermittent wet-arm with pulse washers

Safety

- Door locks, power includes Remote Keyless Entry
- Air conditioning, single-zone manual front climate control
- Assist handle, front passenger (Also includes rear assist handles in the headliner on Extended and Crew Cab Models.)
- Coat hooks, rear driver and passenger side
- Cruise control, electronic with set and resume speed, located on steering wheel
- Cup holders, front (Also includes rear cupholders on Extended and Crew Cab models.)
- Driver Information Center with odometer, trip odometer and message center (monitors numerous systems depending on vehicle equipment level including low fuel, turn signal "on", transmission temperature and oil change notification) (Driver Information Center controls are operated through the trip odometer button unless (UK3) steering wheel mounted audio controls is ordered. On 1LT, 1SF and 1LZ, includes 8-point compass and outside temperature.)
- Floor covering, color-keyed carpeting with rubberized vinyl floor mats (Extended and Crew Cab models also include rear floor mats) (May be substituted with (BG9) Black rubberized vinyl floor covering.)
- Instrumentation, analog with speedometer, odometer, fuel level, engine temperature, and tachometer (Includes voltmeter and oil pressure indicators.)
- Lighting, interior with dome and reading lights, illuminated entry feature and backlit instrument panel switches
- Mirror, inside rearview manual day/night
- Power outlets, 2 auxiliary instrument panel-mounted with covers, 12-volt
- Remote vehicle starter prep package includes Remote Keyless Entry with 2 transmitters, panic button and content theft alarm (To enable remote start capability, new key fobs and vehicle reprogramming are required. Please see dealer for details. Remote Keyless Entry

BLUE TOOTH FOR PHONE

personal cell phone connectivity to vehicle audio system \$175

CONVENIENCE PACKAGE

includes (JF4) Adjustable power pedals, (C49) rear-window electric defogger, (UD7) Rear Parking Assist, (UG1) Universal Home Remote and (AP3) Remote vehicle starter system \$860

REAR AXLE, 3.42 RATIO

SUMMIT WHITE

AUDIO SYSTEM, AM/FM STEREO WITH MP3 COMPATIBLE CD PLAYER

seek-and-scan, digital clock, auto-tone control, Radio Data System (RDS), speed-compensated volume and TheftLock

EBONY, PREMIUM CLOTH SEAT TRIM

SEATS, FRONT 40/20/40 SPLIT-BENCH, 3-PASSENGER, DRIVER AND FRONT PASSENGER MANUAL RECLINING

center fold-down armrest with storage, lockable storage compartment in seat cushion (includes auxiliary power outlet), adjustable outboard head restraints and storage pockets on Extended and Crew Cab models \$1,095

SUSPENSION PACKAGE, OFF-ROAD

includes 1.81" (46 mm) shocks, off-road jounce bumpers, 36mm front stabilizer bar, (NZZ) Skid Plate Package, (V76) recovery hooks, (K47) air cleaner and Z71 decals on rear quarters \$295

WHEELS, 4 - 18" X 8" (45.7 CM X 20.3 CM) ALUMINUM

(spare wheel will not cosmetically match the other 4 wheels) \$450

Option Packages Total

\$3,700

does not lock/unlock tailgate.)

- Seat adjuster, manual lumbar control on the driver-side- Seat trim, Premium Cloth
- Seat, rear 60/40 folding bench (folds up), 3-passenger, folding (includes child seat top tether anchor) (Requires Extended or Crew Cab Models.)
- Seats, front 40/20/40 split-bench, 3-passenger, driver and front passenger manual reclining center fold-down armrest with storage, lockable storage compartment in seat cushion (includes auxiliary power outlet), adjustable outboard head restraints and storage pockets on Extended and Crew Cab models
- Steering column, Tilt-Wheel, adjustable with brake/transmission shift interlock
- Steering wheel, leather-wrapped with theft-deterrent locking feature
- Visors, driver and front passenger, sliding with clip and illuminated vanity mirror on driver and passenger-side, Opal Gray-colored
- Warning tones headlamp on, key-in-ignition, driver and passenger buckle up reminder and turn signal on
- Windows, power with driver Express-Down

Mechanical

- Brakes, 4-wheel antilock, front disc/rear drum
- Engine, Vortec 4.8L Variable Valve Timing V8 SFI FlexFuel capable of running on unleaded or up to 85% ethanol (302 hp [225.2 kW] @ 5600 rpm, 305 lb-ft torque [411.8 N-m] @ 4600 rpm), iron block (Standard on all models except C*10953 Models. Not available on C*10953 models.)
- Alternator, 145 amps
- Battery, heavy-duty 600 cold-cranking amps, maintenance-free with rundown protection and retained accessory power
- Exhaust, aluminized stainless-steel muffler and tailpipe- Four wheel drive
- Frame, fully-boxed, hydroformed front section
- GVWR, 7000 lbs. (3175 kg) (Requires CC10753 models and (L9H) Vortec 6.2L V8 SFI engine and (NHT) Max Trailering Pack or CK10753, CK10953, or CK10543 models. Standard on CK10753, CK10953, or CK10543 models.)
- Rear axle, 3.42 ratio (Refer to Engine/Axle chart for availability.) (With (LC9) Vortec 5.3L V8 Engine, Requires (K5L) heavy-duty cooling package)
- Recovery hooks, front, Black (Standard on 4WD models. Not available with (WEA) Z71 Appearance Package.)
- Steering, power, rack-and-pinion
- Suspension Package, Handling/Trailering, heavy-duty includes 46 mm piston monotube shocks and 36mm front stabilizer bar (Includes 36mm front stabilizer bar when (NHT) Max Trailering Pack is ordered.)
- Suspension, front independent, coil over shock
- Suspension, rear 2-stage multi-leaf springs, semi-elliptic
- Transfer case, electronic Autotrac with rotary dial controls (Requires 4WD models.)
- Transmission, 4-speed automatic, electronically controlled with overdrive and tow/haul mode (On Crew Cab models, requires (L20) Vortec 4.8L V8 SFI Flex-Fuel engine. Not available on C*10953 models.)

Mike's Auto Sales

mikesautosales931.us

9316848671

1664 Fairfield Pike

Shelbyville, TN 37160

© 2024 AutoRevo - All rights reserved. - Powered by AutoRevo