

2017 BMW M6 Base

View this car on our website at dallasdrive.net/7203087/ebrochure

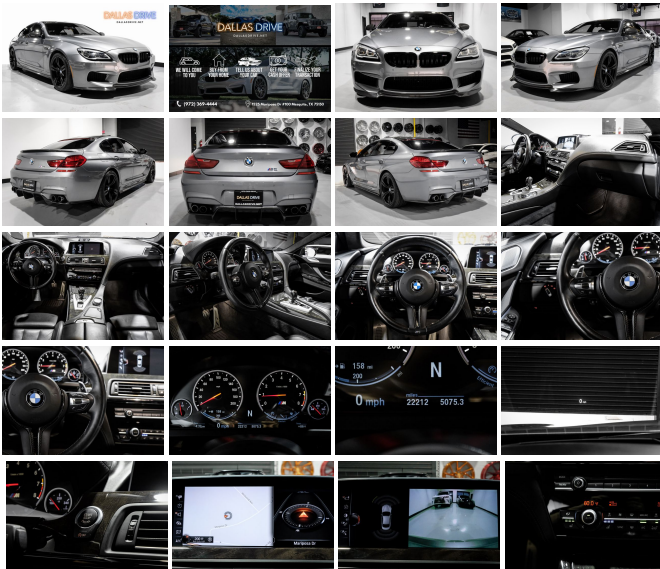


Price **\$56,324**

Specifications:

Year:	2017
VIN:	WBS6E9C53HG437428
Make:	BMW
Stock:	437428
Model/Trim:	M6 Base
Condition:	Pre-Owned
Body:	Sedan
Exterior:	Space Gray Metallic
Engine:	Engine: 4.4L DOHC V8 32V TwinPower Turbo
Interior:	Black Leather
Transmission:	Manual w/OD
Mileage:	22,224
Drivetrain:	Rear Wheel Drive
Economy:	City 14 / Highway 20

Recent Arrival! Odometer is 19830 miles below market average!



The 2017 BMW M6 is a high-performance luxury coupe with a sleek and sporty design. This particular M6 model has only 22,224 miles on the odometer, making it a low-mileage vehicle. It comes in an elegant Space Gray Metallic exterior color, which adds a touch of sophistication to its appearance. The interior features luxurious Black Leather upholstery, providing a comfortable and refined driving environment.

Under the hood, the M6 is equipped with a powerful 4.4L DOHC V8 32V TwinPower Turbo engine, delivering impressive performance and exhilarating acceleration. The engine is mated to a smooth and responsive automatic transmission, ensuring effortless gear changes. With rear-wheel drive (RWD), the M6 offers excellent handling and dynamic driving characteristics.

This particular M6 is equipped with the Executive Package, which includes a range of premium features and technologies. The list of features includes Heated Rear Seats and Front Ventilated Seats, allowing both the driver and passengers to enjoy customized comfort. The Bang & Olufsen Sound System provides a superior audio experience, delivering crystal-clear sound throughout the cabin.

Other notable features of this BMW M6 include Active Front Seats, a Head-Up Display, and a Heated Steering Wheel, all of which contribute to an enhanced driving experience. The Power Rear Sunshade and Rear Side Window Shades offer privacy and shade when needed, adding to the overall convenience and comfort of the vehicle.

In terms of safety and technology, this M6 is equipped with various advanced features. It has Active Blind Spot Detection to assist the driver in monitoring the surrounding traffic. The BMW Connected App Compatibility allows for seamless integration of smartphones and other devices. The Head-Up Display provides vital information, such as speed and navigation instructions, directly in the driver's line of sight.

Overall, this 2017 BMW M6 with its low mileage, stunning Space Gray Metallic exterior, luxurious Black Leather interior, and a range of premium features, offers an exhilarating driving experience and represents a combination of performance, style, and comfort.

Key Features: 16 Speakers, 4-Wheel Disc Brakes, ABS brakes, Active Blind Spot Detection, Active Front Seats, Adaptive suspension, Air Conditioning, Alloy wheels, AM/FM radio: SiriusXM, Anti-whiplash front head restraints, Auto High-beam Headlights, Auto tilt-away steering wheel, Auto-dimming door mirrors, Auto-dimming Rear-View mirror, Automatic temperature control, Bang & Olufsen Sound System, BMW Connected App Compatibility, Brake assist, Bumpers: body-color, CD player, Delay-off headlights, Door auto-latch, Driver door bin, Driver vanity mirror, Dual front impact airbags, Dual front side impact airbags, DVD-Audio, Electronic Stability Control, Emergency communication system: BMW Assist eCall, Enhanced USB & Bluetooth, Extended Merino Leather Seat Upholstery, Exterior Parking Camera Rear, Four wheel independent suspension, Front anti-roll bar, Front Bucket Seats, Front Center Armrest, Front dual zone A/C, Front Heated Sport Seats, Front reading lights, Front Ventilated Seats, Fully automatic headlights, Garage door transmitter, Gray Poplar Wood Trim, Head restraints memory, Headlight cleaning, Head-Up Display, Heated door mirrors, Heated front seats, Heated Rear Seats, Heated Steering Wheel, Illuminated entry, Knee airbag, Leather Shift Knob, Leather steering wheel, Low tire pressure warning, Memory seat, Multi-Function Seats w/Lumbar Support, Navigation System, Power Rear Sunshade, Power , Rear air conditioning, Rear anti-roll bar, Rear dual zone A/C, Remote keyless entry, Steering wheel mounted audio controls.

2017 BMW M6 Base

Dallas Drive - (972) 369-4444 - View this car on our website at dallasdrive.net/7203087/ebrochure

Our Location :



2017 BMW M6 Base

Dallas Drive - (972) 369-4444 - View this car on our website at dallasdrive.net/7203087/ebrochure

Installed Options

Interior

- Front Heated Sport Seats- Sport Bucket Front Seats- Driver Seat- Passenger Seat
- 40-60 Folding Bench Front Facing Fold Forward Seatback Rear Seat
- Power Tilt/Telescoping Steering Column
- Gauges -inc: Speedometer, Odometer, Tachometer, Oil Level, Oil Temperature, Trip Odometer and Trip Computer
- Power Rear Windows- MyInfo Mobile Hotspot Internet Access
- Sport Leather Steering Wheel w/Auto Tilt-Away- Front Cupholder- Front Cigar Lighter(s)
- Ashtray- Proximity Key For Doors And Push Button Start - Interior Lock Disable
- Valet Function- Power Fuel Flap Locking Type
- Remote Releases -Inc: Power Cargo Access
- Remote Keyless Entry w/Integrated Key Transmitter, Illuminated Entry and Panic Button
- Garage Door Transmitter- Cruise Control w/Steering Wheel Controls
- Dual Zone Front And Rear Automatic Air Conditioning- Rear HVAC w/Separate Controls
- HVAC -inc: Underseat Ducts, Residual Heat Recirculation and Console Ducts
- Illuminated Glove Box- Driver Foot Rest
- Interior Trim -inc: Carbon Fiber/Metal-Look Instrument Panel Insert, Carbon Fiber Door Panel Insert, Leather/Carbon Fiber Console Insert and Metal-Look Interior Accents
- Leather Door Trim Insert- Leather/Metal-Look Gear Shifter Material- Full Cloth Headliner
- Extended Merino Leather Seat Upholstery- Day-Night Auto-Dimming Rearview Mirror
- Driver And Passenger Visor Vanity Mirrors w/Driver And Passenger Illumination
- Fade-To-Off Interior Lighting- Front And Rear Map Lights
- Full Carpet Floor Covering -inc: Carpet Front And Rear Floor Mats
- Carpet Floor Trim and Carpet Trunk Lid/Rear Cargo Door Trim - Trunk/Hatch Auto-Latch
- Cargo Area Concealed Storage- Cargo Space Lights
- Memory Settings -inc: Door Mirrors, Steering Wheel and Head Restraints
- FOB Controls -inc: Cargo Access and Windows- Tracker System- Navigation System
- BMW Connected App Compatibility- Driver / Passenger And Rear Door Bins
- Delayed Accessory Power- Power Door Locks w/Autolock Feature
- Power 1st Row Windows w/Front And Rear 1-Touch Up/Down - Systems Monitor

- Trip Computer- Outside Temp Gauge- Analog Appearance- Fixed Rear Head Restraints
- Front Center Armrest, Rear Center Armrest w/Pass-Thru And Skibag w/Storage
- 2 Seatback Storage Pockets- Multi-Function Seats w/Lumbar Support- Perimeter Alarm
- Immobilizer- 2 12V DC Power Outlets- Air Filtration

Exterior

- Wheels: 20" x 9.5" Fr & 20" x 10.5" Rr M Alloy -inc: Double spoke light alloy in gloss black style 433M
- Tires: P265/35R20 Fr & P295/30R20 Rr Performance- Clearcoat Paint
- Body-Colored Front Bumper- Body-Colored Rear Bumper- Black Side Windows Trim
- Chrome Door Handles
- Body-Colored Power Heated Auto Dimming Side Mirrors w/Power Folding
- Fixed Rear Window w/Defroster- Light Tinted Glass
- Speed Sensitive Rain Detecting Variable Intermittent Wipers w/Heated Jets
- Galvanized Steel/Aluminum/Composite Panels- Chrome Grille- Trunk Rear Cargo Access
- Auto On/Off Aero-Composite Led Low/High Beam Daytime Running Auto-Leveling Directionally Adaptive Auto High-Beam Headlamps w/Washer and Delay-Off
- Rear Fog Lamps- Cornering Lights- Perimeter/Approach Lights- LED Brakelights
- Headlights-Automatic Highbeams- Door Auto-Latch

Safety

- Front Heated Sport Seats- Sport Bucket Front Seats- Driver Seat- Passenger Seat
- 40-60 Folding Bench Front Facing Fold Forward Seatback Rear Seat
- Power Tilt/Telescoping Steering Column
- Gauges -inc: Speedometer, Odometer, Tachometer, Oil Level, Oil Temperature, Trip Odometer and Trip Computer
- Power Rear Windows- MyInfo Mobile Hotspot Internet Access
- Sport Leather Steering Wheel w/Auto Tilt-Away- Front Cupholder- Front Cigar Lighter(s)
- Ashtray- Proximity Key For Doors And Push Button Start - Interior Lock Disable
- Valet Function- Power Fuel Flap Locking Type
- Remote Releases -Inc: Power Cargo Access
- Remote Keyless Entry w/Integrated Key Transmitter, Illuminated Entry and Panic Button
- Garage Door Transmitter- Cruise Control w/Steering Wheel Controls
- Dual Zone Front And Rear Automatic Air Conditioning - Rear HVAC w/Separate Controls
- HVAC -inc: Underseat Ducts, Residual Heat Recirculation and Console Ducts
- Illuminated Glove Box- Driver Foot Rest
- Interior Trim -inc: Carbon Fiber/Metal-Look Instrument Panel Insert, Carbon Fiber Door Panel Insert, Leather/Carbon Fiber Console Insert and Metal-Look Interior Accents
- Leather Door Trim Insert- Leather/Metal-Look Gear Shifter Material- Full Cloth Headliner
- Extended Merino Leather Seat Upholstery- Day-Night Auto-Dimming Rearview Mirror
- Driver And Passenger Visor Vanity Mirrors w/Driver And Passenger Illumination
- Fade-To-Off Interior Lighting- Front And Rear Map Lights
- Full Carpet Floor Covering -inc: Carpet Front And Rear Floor Mats
- Carpet Floor Trim and Carpet Trunk Lid/Rear Cargo Door Trim - Trunk/Hatch Auto-Latch
- Cargo Area Concealed Storage- Cargo Space Lights
- Memory Settings -inc: Door Mirrors, Steering Wheel and Head Restraints
- FOB Controls -inc: Cargo Access and Windows- Tracker System- Navigation System
- BMW Connected App Compatibility- Driver / Passenger And Rear Door Bins
- Delayed Accessory Power- Power Door Locks w/Autolock Feature
- Power 1st Row Windows w/Front And Rear 1-Touch Up/Down - Systems Monitor
- Trip Computer- Outside Temp Gauge- Analog Appearance- Fixed Rear Head Restraints
- Front Center Armrest, Rear Center Armrest w/Pass-Thru And Skibag w/Storage
- 2 Seatback Storage Pockets- Multi-Function Seats w/Lumbar Support- Perimeter Alarm
- Immobilizer- 2 12V DC Power Outlets- Air Filtration

Mechanical

- Engine: 4.4L DOHC V8 32V TwinPower Turbo
- Transmission: 7-Speed M Double-Clutch w/Drivelogic- Engine Auto Stop-Start Feature
- Transmission w/Driver Selectable Mode and STEPTRONIC Sequential Shift Control w/Steering Wheel Controls
- Rear-Wheel Drive- 3.15 Axle Ratio- Regenerative 210 Amp Alternator
- 105-Amp/Hr Maintenance-Free Battery- Gas-Pressurized Shock Absorbers
- Front And Rear Anti-Roll Bars
- Automatic w/Driver Control Ride Control Sport Tuned Adaptive Suspension
- Hydraulic Power-Assist Speed-Sensing Steering- 21.1 Gal. Fuel Tank
- Dual Stainless Steel Exhaust w/Chrome Tailpipe Finisher
- Double Wishbone Front Suspension w/Coil Springs
- Multi-Link Rear Suspension w/Coil Springs
- 4-Wheel Disc Brakes w/4-Wheel ABS, Front And Rear Vented Discs, Brake Assist, Hill Hold Control and Electric Parking Brake

- Cell Phone Pre-Wiring- Electro-Mechanical Limited Slip Differential

Dallas Drive

dallasdrive.net

(972) 369-4444

1525 Mariposa Drive

Mesquite, TX 75150

© 2023 AutoRevo - All rights reserved. - Powered by [AutoRevo](#)