



2017 Ford Focus RS Air Ride w/ MODS

Website Price \$34,995

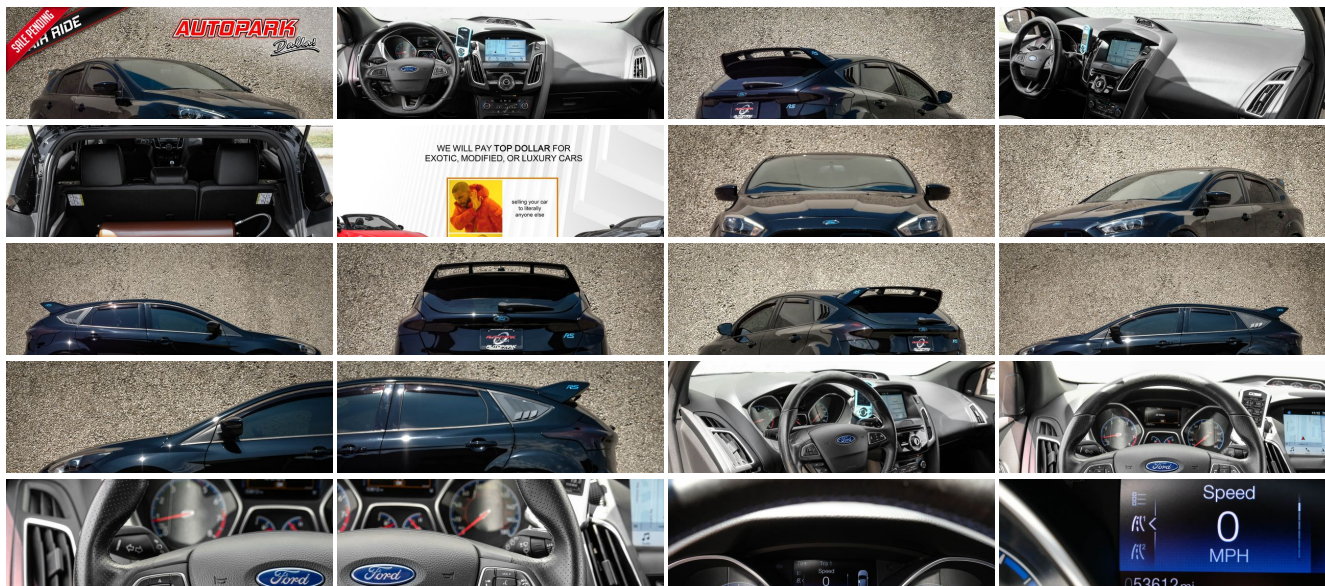
View this vehicle on our website at autoparkdallas.com



(214) 945-2601

2061 S Stemmons Fwy , Lewisville, TX 75067

Photos
Details
Contact



Specifications:

Year:	2017
VIN:	WF0DP3TH3H4121736
Make:	Ford
Stock:	1340
Model/Trim:	Focus RS Air Ride w/ MODS
Condition:	Pre-Owned
Body:	Sedan
Exterior:	Shadow Black
Interior:	Black
Transmission:	Manual w/OD
Mileage:	53,599
Drivetrain:	All Wheel Drive
Economy:	City 19 / Highway 25

Vehicle Description

Installed Options

Interior

- FOB Controls -inc: Cargo Access
- Gauges -inc: Speedometer, Odometer, Oil Pressure, Engine Coolant Temp, Tachometer, Turbo/Supercharger Boost, Oil Temperature, Trip Odometer and Trip Computer
- Partial Leather Recaro Seats -inc: 6-way manual driver seat (up/down, fore/aft, recline), 4-way manual passenger seat (fore/aft, recline), 4-way head restraints and RS logo
- Power 1st Row Windows w/Front And Rear 1-Touch Up/Down
- Power Door Locks w/Autolock Feature- Power Rear Windows
- Proximity Key For Doors And Push Button Start
- Remote Keyless Entry w/Integrated Key Transmitter, Illuminated Entry and Panic Button
- SYNC 3 Communications & Entertainment System -inc: enhanced voice recognition, 8" center LCD touch screen w/swiping and pinch-to-zoom capabilities, AppLink, 911 Assist, 2 smart charging USB ports, VHR, SYNC Services, Bluetooth, steering wheel controls, and auxiliary input jack
- Trip Computer- 1 Seatback Storage Pocket- 2 12V DC Power Outlets
- 4-Way Passenger Seat- 6-Way Driver Seat
- 60-40 Folding Bench Front Facing Flip Forward Cushion/Seatback Rear Seat
- Air Filtration- Analog Appearance- Cargo Area Concealed Storage
- Cargo Features -inc: Tire Mobility Kit- Cargo Space Lights- Carpet Floor Trim
- Cloth Door Trim Insert- Compass- Cruise Control w/Steering Wheel Controls
- Day-Night Rearview Mirror- Delayed Accessory Power
- Driver And Passenger Visor Vanity Mirrors w/Driver And Passenger Illumination
- Driver Foot Rest- Dual Zone Front Automatic Air Conditioning
- Fade-To-Off Interior Lighting- Front And Rear Map Lights- Front Center Armrest
- Front Cupholder- Full Carpet Floor Covering -inc: Carpet Front And Rear Floor Mats
- Full Cloth Headliner
- Full Floor Console w/Covered Storage and 2 12V DC Power Outlets - Glove Box
- HVAC -inc: Underseat Ducts
- Instrument Panel Bin, Driver / Passenger And Rear Door Bins
- Interior Trim -inc: Chrome Interior Accents - Leather Steering Wheel
- Leather/Aluminum Gear Shifter Material- Manual Adjustable Rear Head Restraints
- Manual Tilt/Telescoping Steering Column- Outside Temp Gauge- Perimeter Alarm
- Rear Cupholder- Rigid Cargo Cover- Seats w/Cloth Back Material
- Securilock Anti-Theft Ignition (pats) Immobilizer- Systems Monitor

Exterior

- Tailgate/Rear Door Lock Included w/Power Door Locks
- Tires: 19" Michelin Super Sport Summer- Wheels: 19" Premium Painted Alloy
- Auto On/Off Projector Beam High Intensity Low Beam Daytime Running Auto-Leveling Directionally Adaptive Headlamps w/Delay-Off
- Black Grille- Black Side Windows Trim and Black Front Windshield Trim
- Body-Colored Door Handles- Body-Colored Front Bumper

- Body-Colored Power Side Mirrors w/Convex Spotter, Manual Folding and Turn Signal Indicator
- Body-Colored Rear Bumper w/Black Rub Strip/Fascia Accent- Clearcoat Paint
- Cornering Lights
- Fixed Rear Window w/Fixed Interval Wiper, Heated Wiper Park and Defroster
- Front Fog Lamps- Fully Galvanized Steel Panels- Liftgate Rear Cargo Access
- Light Tinted Glass- Perimeter/Approach Lights- Rocker Panel Extensions
- Tire Mobility Kit- Variable Intermittent Wipers- Wing Spoiler

Safety

- FOB Controls -inc: Cargo Access
- Gauges -inc: Speedometer, Odometer, Oil Pressure, Engine Coolant Temp, Tachometer, Turbo/Supercharger Boost, Oil Temperature, Trip Odometer and Trip Computer
- Partial Leather Recaro Seats -inc: 6-way manual driver seat (up/down, fore/aft, recline), 4-way manual passenger seat (fore/aft, recline), 4-way head restraints and RS logo
- Power 1st Row Windows w/Front And Rear 1-Touch Up/Down
- Power Door Locks w/Autolock Feature- Power Rear Windows
- Proximity Key For Doors And Push Button Start
- Remote Keyless Entry w/Integrated Key Transmitter, Illuminated Entry and Panic Button
- SYNC 3 Communications & Entertainment System -inc: enhanced voice recognition, 8" center LCD touch screen w/swiping and pinch-to-zoom capabilities, AppLink, 911 Assist, 2 smart charging USB ports, VHR, SYNC Services, Bluetooth, steering wheel controls, and auxiliary input jack
- Trip Computer- 1 Seatback Storage Pocket- 2 12V DC Power Outlets
- 4-Way Passenger Seat- 6-Way Driver Seat
- 60-40 Folding Bench Front Facing Flip Forward Cushion/Seatback Rear Seat
- Air Filtration- Analog Appearance- Cargo Area Concealed Storage
- Cargo Features -inc: Tire Mobility Kit- Cargo Space Lights- Carpet Floor Trim
- Cloth Door Trim Insert- Compass- Cruise Control w/Steering Wheel Controls
- Day-Night Rearview Mirror- Delayed Accessory Power
- Driver And Passenger Visor Vanity Mirrors w/Driver And Passenger Illumination
- Driver Foot Rest- Dual Zone Front Automatic Air Conditioning
- Fade-To-Off Interior Lighting- Front And Rear Map Lights- Front Center Armrest
- Front Cupholder- Full Carpet Floor Covering -inc: Carpet Front And Rear Floor Mats
- Full Cloth Headliner
- Full Floor Console w/Covered Storage and 2 12V DC Power Outlets - Glove Box
- HVAC -inc: Underseat Ducts
- Instrument Panel Bin, Driver / Passenger And Rear Door Bins
- Interior Trim -inc: Chrome Interior Accents - Leather Steering Wheel
- Leather/Aluminum Gear Shifter Material- Manual Adjustable Rear Head Restraints
- Manual Tilt/Telescoping Steering Column- Outside Temp Gauge- Perimeter Alarm
- Rear Cupholder- Rigid Cargo Cover- Seats w/Cloth Back Material
- Securilock Anti-Theft Ignition (pats) Immobilizer- Systems Monitor

Mechanical

- Engine: 2.3L GTDI -inc: auto start-stop technology- Transmission: 6-Speed Manual
- 13.9 Gal. Fuel Tank
- 4-Wheel Disc Brakes w/4-Wheel ABS, Front Vented Discs, Brake Assist and Hill Hold Control
- 4.06 Axle Ratio- 590CCA Maintenance-Free Battery w/Run Down Protection
- Automatic Full-Time All-Wheel- Brake Actuated Limited Slip Differential
- Driver Control Ride Control Sport Tuned Suspension- Electric Power-Assist Steering
- Engine Auto Stop-Start Feature- Front And Rear Anti-Roll Bars
- Gas-Pressurized Shock Absorbers
- Quasi-Dual Stainless Steel Exhaust w/Polished Tailpipe Finisher
- Short And Long Arm Rear Suspension w/Coil Springs
- Strut Front Suspension w/Coil Springs- Transmission w/Driver Selectable Mode



Auto Park Dallas

View this car on our website at autoparkdallas.com/7202962

Website: autoparkdallas.com

Phone: (214) 945-2601

Map: 2061 S Stemmons Fwy, Lewisville, TX 75067

