



## 2010 Chevrolet Camaro 2SS CAMMED

**Website Price \$23,995**

View this vehicle on our website at [autoparkdallas.com](http://autoparkdallas.com)



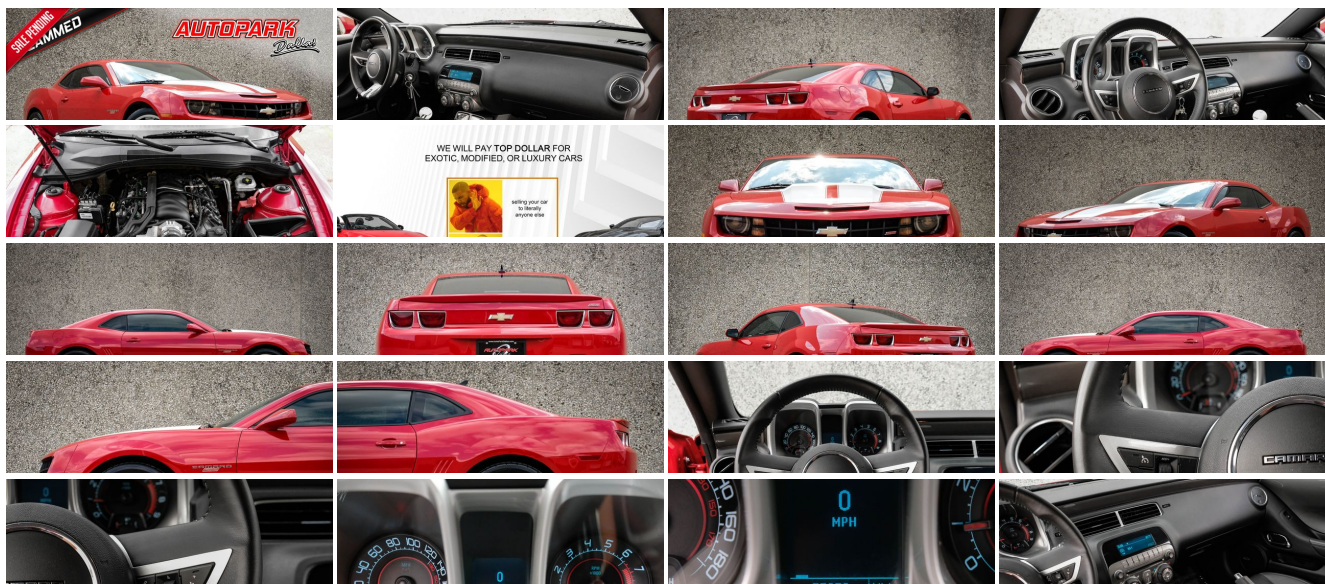
(214) 945-2601

2061 S Stemmons Fwy , Lewisville, TX 75067

Photos

Details

Contact



## Specifications:

Year:	2010
VIN:	2G1FT1EW6A9123144
Make:	Chevrolet
Stock:	1345
Model/Trim:	Camaro 2SS CAMMED
Condition:	Pre-Owned
Body:	Coupe
Exterior:	Victory Red
Engine:	ENGINE, 6.2L V8 SFI
Interior:	Black Leather
Transmission:	TRANSMISSION, 6-SPEED MANUAL
Mileage:	57,235
Drivetrain:	Rear Wheel Drive
Economy:	City 16 / Highway 24

## Vehicle Description

AutoPark Dallas is thrilled to offer you this **2010 Chevrolet Camaro SS** for sale! There's nothing that quite compares to the exhilarating drive of a true American muscle car, especially when it's been properly modified for performance and drivability. This Camaro SS has been **Cammed** and comes equipped with **Kooks Headers** along with **Gibson Exhaust** to really let that chop and rumble out!! Top it off with a set of **Cragar Performance Wheels** and a **Hurst Short Throw Shifter** and you've got yourself one hell of a Camaro to enjoy. From the factory this example was well equipped coming as a **2SS** along with the **RS Package** - the beautiful **Victory Red** pairs beautifully with the **Black Interior**, so don't miss your opportunity to own this Cammed Camaro before it's gone! DO! NOT! HESITATE!!! To swing by and check out this **2010 Camaro SS** that we have parked here in our indoor 16,000 Sq Ft Showroom located in Dallas, Texas amongst our inventory of 100+ other Unique / Modified and Luxury Vehicles!

---

## 2010 Chevrolet Camaro SS

### MODIFICATIONS

**CAMMED**

**KOOKS HEADERS**

**GIBSON EXHAUST**

**K&N INTAKE**

**HURST SHORT THROW SHIFTER**

**CRAGAR PERFORMANCE WHEELS**

### STOCK

**RS PACKAGE**

**6.2L V8 ENGINE**  
**6-SPEED MANUAL TRANSMISSION**  
**2SS PREFERRED EQUIPMENT GROUP**  
**HIGH INTENSITY DISCHARGE (HID) HEADLIGHTS**  
**3.45 RATIO AXLE**  
**VICTORY RED**  
**BLACK SEATS**

---

## Financing is available!

Check out our Payment Calculator to get an estimate on your monthly payments!

OR

Get pre-approved in no time by filling out a credit application on the 'Finance' section of our website!

We also offer MANY different Extended Warranty options!

---

Check out our Google Reviews by \*Clicking\* this LINK!

Referrals and Testimonials is what our business is built on!

---

The team here at AutoPark Dallas, is dedicated to offering a level of customer service not usually found in the automobile industry. Thanks to years of extensive car buying / selling experience, we pursue quality used and new vehicles that are hand-picked from factory sources. Our love for automobiles and dislike of traditional dealership tactics is what motivates us to provide the service we do! The pride we take in continuing this service long after the vehicle has been delivered is what we strive for! Looking forward to making every effort to see that our customer is completely satisfied and a friend for life!

Pre-purchase inspections are always welcomed!

We also offer airport pick-up, competitive financing options, free CARFAX Reports, Car Shipping nationwide, Extended Warranty plans, and so much more!

Trade-In(s) are always accepted or sell us your used car (MODIFIED OR NOT)! Please call or text for more information about Trade-Ins or selling your car to us @ (214) 945-2601!

---

**#(214) 945-2601**

**Call or Text *Anytime!***

**Se habla Español**

**WE BUY CARS!**

Installed Options

Interior

- Door locks, power programmable with lockout protection- Floor mats, carpeted front
- Remote Keyless Entry- Seat trim, leather-appointed front seats
- Air conditioning, single-zone manual- Air filtration system with pollen filter
- Cargo convenience net- Coat hooks, driver- and passenger-side rear
- Compass, located in Driver Information Center - Console, floor, with armrest
- Cruise control, electronic with set and resume speed, steering wheel mounted
- Cup holders, 2 front- Dead pedal, driver- Defogger, rear-window, electric
- Gauges, auxiliary, multi-function includes 4 gauges: oil pressure, battery voltage, oil temperature and transmission fluid temperature, mounted on center console forward of shifter
- Glovebox, lockable
- Instrumentation, analog with Driver Information Center display and SS detail, includes speedometer, tachometer, fuel gauge and engine temperature gauge
- Lighting, front reading lamps
- Lighting, interior dome with illuminated entry and theater dimming
- Map pockets, front doors- Mirror, inside rearview autodimming
- Power outlets, 2 auxiliary 1 located in center console storage area and 1 located at front of center console
- Seat adjuster, driver, 6-way power (fore/aft, up/down, tilt) with power recliner
- Seat adjuster, front passenger 2-way manual (fore/aft) with power recliner
- Seats, heated driver and front passenger - Shift knob, leather-wrapped
- Sill plate, Chevrolet- Steering column, manual rake and telescopic
- Steering wheel, 3-spoke leather-wrapped- Theft-deterrent system, PASS-Key III
- Trunk release, remote, located on driver-side
- Universal Home Remote includes garage door opener, 3-channel programmable
- Visors, driver and front passenger vanity mirrors, covered
- Windows, power with driver and passenger Express-Down/Up

Exterior

- Headlamps, halogen composite with automatic exterior lamp control
- Tires, P245/45R20 front and P275/40R20 rear, blackwall, summer
- Wheels, 20" x 8" (50.8 cm x 20.3 cm) front and 20" x 9" (50.8 cm x 22.9 cm) rear flangeless, painted aluminum with sterling silver finish (Midnight Silver finish when (WRS) RS Package is ordered.)
- Door handles, body-color
- Fascias, front and rear body-color, SS-specific with unique front grille and rear diffuser, lower extension, front air scoop and brake cooling slots
- Fog lamps (When (WRS) RS Package is ordered, fog lamps act as Daytime Running Lamps.)
- Hood blanket with debossed Chevrolet bowtie
- Mirrors, outside heated power-adjustable and driver-side auto-dimming, body-color
- Molding, Black roof ditch- Moldings, body-color lower rocker
- Spare tire and wheel, not desired tire sealant and inflator kit in place of spare tire
- Spoiler, rear- Tire sealant and inflator kit in place of spare tire - Wipers, front intermittent

Safety

- Door locks, power programmable with lockout protection- Floor mats, carpeted front
- Remote Keyless Entry- Seat trim, leather-appointed front seats
- Air conditioning, single-zone manual- Air filtration system with pollen filter
- Cargo convenience net- Coat hooks, driver- and passenger-side rear
- Compass, located in Driver Information Center - Console, floor, with armrest
- Cruise control, electronic with set and resume speed, steering wheel mounted
- Cup holders, 2 front- Dead pedal, driver- Defogger, rear-window, electric
- Gauges, auxiliary, multi-function includes 4 gauges: oil pressure, battery voltage, oil temperature and transmission fluid temperature, mounted on center console forward of shifter
- Glovebox, lockable
- Instrumentation, analog with Driver Information Center display and SS detail, includes speedometer, tachometer, fuel gauge and engine temperature gauge
- Lighting, front reading lamps
- Lighting, interior dome with illuminated entry and theater dimming
- Map pockets, front doors- Mirror, inside rearview autodimming
- Power outlets, 2 auxiliary 1 located in center console storage area and 1 located at front of center console
- Seat adjuster, driver, 6-way power (fore/aft, up/down, tilt) with power recliner

Option Packages

Factory Installed Packages

ENGINE, 6.2L V8 SFI  
(426 hp [317.6 kW] @ 5900 rpm, 420 lb-ft of torque [567.0 N-m] @ 4600 rpm)

TRANSMISSION, 6-SPEED MANUAL

HEADLAMPS, HIGH INTENSITY DISCHARGE  
with automatic exterior lamp control

RS PACKAGE  
includes (Q9K) 20" x 8" front and 20" x 9" rear flangeless, painted aluminum wheels with midnight silver finish, (BD8) body-color roof ditch molding, (T4F) high intensity discharge headlamps and RS unique tail lamps \$1,200

AXLE, 3.45 RATIO

EMISSIONS, FEDERAL REQUIREMENTS

VICTORY RED

PREFERRED EQUIPMENT GROUP  
includes Standard Equipment

AUDIO SYSTEM, AM/FM STEREO WITH CD-ROM AND MP3 PLAYBACK  
music navigator, Graphic Information Display (GID) and auxiliary input jack, includes outside temperature display

BLACK, LEATHER-APPOINTED FRONT SEATS

SEATS, FRONT SPORT BUCKET  
includes adjustable head restraints and folding rear seat with trunk pass-through

WHEELS, 20" X 8" (50.8 CM X 20.3 CM) FRONT AND 20" X 9" (50.8 CM X 22.9 CM) REAR POLISHED ALUMINUM \$470

Option Packages Total \$1,670

- Seat adjuster, driver, 6-way power (fore/aft, up/down, tilt) with power recliner
- Seat adjuster, front passenger 2-way manual (fore/aft) with power recliner
- Seats, heated driver and front passenger - Shift knob, leather-wrapped
- Sill plate, Chevrolet- Steering column, manual rake and telescopic
- Steering wheel, 3-spoke leather-wrapped- Theft-deterrent system, PASS-Key III
- Trunk release, remote, located on driver-side
- Universal Home Remote includes garage door opener, 3-channel programmable
- Visors, driver and front passenger vanity mirrors, covered
- Windows, power with driver and passenger Express-Down/Up

## Mechanical

- Transmission, 6-speed manual- Alternator, 150 amps- Axle, 3.45 ratio
- Battery, maintenance-free with rundown protection and retained accessory power
- Brakes, 4-wheel antilock, 4-wheel disc (Brembo performance 4 piston front and 4 piston rear brakes.)
- Differential, limited slip
- Engine, 6.2L V8 SFI (426 hp [317.6 kW] @ 5900 rpm, 420 lb-ft of torque [567.0 N-m] @ 4600 rpm) (Requires (MN6) 6-speed manual transmission.)
- Exhaust, dual-outlet stainless-steel with polished tips- Rear wheel drive
- Steering, power, variable ratio- Suspension, Performance



Auto Park Dallas

View this car on our website at [autoparkdallas.com/7202938](http://autoparkdallas.com/7202938)

Website: [autoparkdallas.com](http://autoparkdallas.com)

Phone: (214) 945-2601

Map: [2061 S Stemmons Fwy, Lewisville, TX 75067](#)

