



2014 Chevrolet Camaro SS CAMMED

Website Price \$23,995

View this vehicle on our website at autoparkdallas.com



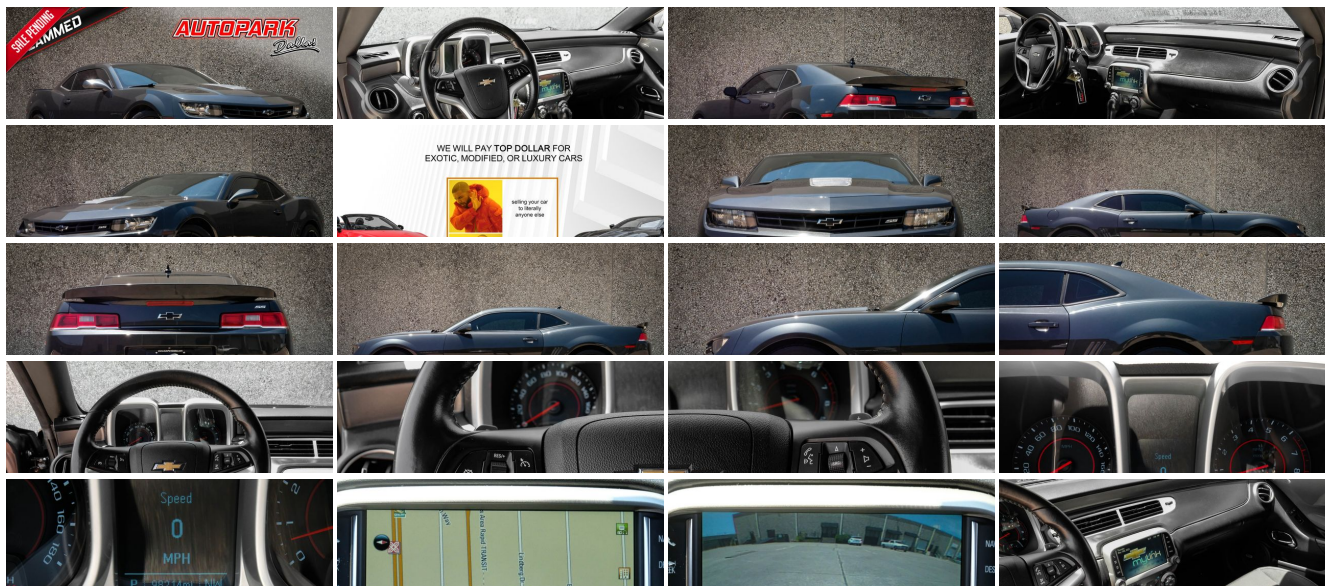
(214) 945-2601

2061 S Stemmons Fwy , Lewisville, TX 75067

Photos

Details

Contact



Specifications:

Year:	2014
VIN:	2G1FJ1EJ0E9137198
Make:	Chevrolet
Stock:	1332
Model/Trim:	Camaro SS CAMMED
Condition:	Pre-Owned
Body:	Coupe
Exterior:	Ashen Gray Metallic
Engine:	ENGINE, 6.2L V8 SFI
Interior:	Black
Transmission:	Automatic
Mileage:	98,200
Drivetrain:	Rear Wheel Drive
Economy:	City 15 / Highway 24

Vehicle Description

AutoPark Dallas is thrilled to offer you this SICK 2014 Chevrolet Camaro SS for sale! The roar of the stainless steel long-tube headers flowing down into the exhaust is the first thing you and everybody else will hear when you hit the remote start. Possibly waking up the whole neighborhood, but at least you'll have a smile on your face! Purely a beast of a SS that has plenty of power to hit the pavement and to add some style points with the Gloss Black 20" ACE Alloy Wheels!!! If you are in search of a Camaro or a fun weekend warrior, then DEFINITELY come check out this Camaro SS parked here in our indoor 16,000 Sq Ft Showroom located in Dallas , Texas amongst our inventory of 100+ other Performance / Modified and Luxury cars!

2014 Chevrolet Camaro SS

* 2 Previous Owners !*

* Clean CarFax !*

* 2 Sets of Keys !*

* Rear Vision Package !*

MODIFICATIONS!

Stainless Steel Long-Tube Headers

Modified Exhaust System

20" ACE Alloy Wheels

AirAid Cold-Air Intake

Taylor Cable Spark Plug Wire

Windows Tinted

STOCK!

Ashen Gray Metallic

Black Cloth Interior

Navigation

Bluetooth

Back-Up Camera
Rear Reverse Sensors
Remote Start-Up
Boston Premium Audio
Factory BREMBO Brakes
6.2L V8 SFI Engine
6-Speed Automatic Transmission
Rear Wheel Drive
Professionally Detailed!
Well Maintained!
AND SO MUCH MORE!!!

Financing is available!

Check out our Payment Calculator to get an estimate on your monthly payments!

OR

Get pre-approved in no time by filling out a credit application on the 'Finance' section of our website!

Check out our Google Reviews by *Clicking* this [LINK!](#)

Referrals and Testimonials is what our business is built on!

The team here at AutoPark Dallas, is dedicated to offering a level of customer service not usually found in the automobile industry. Thanks to years of extensive car buying / selling experience, we pursue quality used and new vehicles that are hand-picked from factory sources. Our love for automobiles and dislike of traditional dealership tactics is what motivates us to provide the service we do! The pride we take in continuing this service long after the vehicle has been delivered is what we strive for! Looking forward to making every effort to see that our customer is completely satisfied and a friend for life!

Pre-purchase inspections are always welcomed!

We also offer airport pick-up, competitive financing options, free CarFax Reports, Car Shipping nationwide, Extended Warranty plans, and so much more!

Trade-In(s) are always accepted or sell us your used car (MODIFIED OR NOT)! Please call or text for more information about Trade-Ins or selling your car to us @ (214) 945-2601!

#(214) 945-2601

Call or Text **Anytime!**

Se habla Español

WE BUY CARS!

WWW.AUTOPARKDALLAS.COM

Installed Options

Interior

- Air conditioning, single-zone manual- Air filtration system with pollen filter
- Coat hooks, driver- and passenger-side rear
- Compass, located in Driver Information Center - Console, floor, with armrest
- Cruise control, electronic with set and resume speed, steering wheel mounted
- Cup holders, 2 front- Dead pedal, driver- Defogger, rear-window, electric
- Door locks, power programmable with lockout protection
- Driver Information Center, monochromatic display- Floor mats, carpeted front
- Glovebox, lockable
- Instrumentation, analog includes speedometer, tachometer, fuel gauge and engine temperature gauge
- Lighting, front reading lamps
- Lighting, interior with illuminated entry and theater dimming - Map pockets, front doors
- Mirror, inside rearview manual day/night
- Power outlets, 2 auxiliary 1 located in center console storage area and 1 located at front of center console
- Remote Keyless Entry
- Seat adjuster, driver, 6-way power (fore/aft, up/down, tilt) with power recliner
- Seat adjuster, front passenger, 6-way power (fore/aft, up/down, tilt) with power recliner
- Seat trim, Sport Cloth seat trim
- Seats, front Sport bucket includes adjustable head restraints and folding rear seat with trunk pass-through (Includes passenger-side seatback map pocket.) (Upgradeable to (AYZ) Recaro performance front seats. Includes passenger-side seatback map pocket.)
- Shift knob, leather-wrapped- Sill plate, Chevrolet
- Steering column, manual rake and telescopic- Steering wheel, 3-spoke leather-wrapped
- Theft-deterrent system, PASS-Key III - Trunk release, remote, located on driver-side
- Visors, driver and front passenger vanity mirrors, covered
- Windows, power with driver and passenger Express-Down/Up

Exterior

- Tires, P245/45R20 front and P275/40R20 rear, blackwall, summer (Do not use summer-only tires in winter conditions, as it would adversely affect vehicle safety, performance and durability.)
- Wheels, 20" x 8" (50.8 cm x 20.3 cm) front and 20" x 9" (50.8 cm x 22.9 cm) rear flangeless, painted aluminum with Bright Silver finish (Midnight Silver finish when (WRS) RS Package is ordered.)
- Door handles, body-color- Fascias, front and rear body-color, SS-specific
- Fog lamps, front projector type
- Headlamps, halogen composite with automatic exterior lamp control - Hood blanket
- Mirrors, outside power-adjustable body-color- Molding, Black roof ditch
- Moldings, body-color lower rocker
- Spare tire and wheel, not desired tire sealant and inflator kit in place of spare tire
- Spoiler, rear- Tire sealant and inflator kit in place of spare tire - Wipers, front intermittent

Safety

- Air conditioning, single-zone manual- Air filtration system with pollen filter
- Coat hooks, driver- and passenger-side rear
- Compass, located in Driver Information Center - Console, floor, with armrest
- Cruise control, electronic with set and resume speed, steering wheel mounted
- Cup holders, 2 front- Dead pedal, driver- Defogger, rear-window, electric
- Door locks, power programmable with lockout protection
- Driver Information Center, monochromatic display- Floor mats, carpeted front
- Glovebox, lockable
- Instrumentation, analog includes speedometer, tachometer, fuel gauge and engine temperature gauge
- Lighting, front reading lamps
- Lighting, interior with illuminated entry and theater dimming - Map pockets, front doors
- Mirror, inside rearview manual day/night
- Power outlets, 2 auxiliary 1 located in center console storage area and 1 located at front of center console
- Remote Keyless Entry
- Seat adjuster, driver, 6-way power (fore/aft, up/down, tilt) with power recliner
- Seat adjuster, front passenger, 6-way power (fore/aft, up/down, tilt) with power recliner
- Seat trim, Sport Cloth seat trim
- Seats, front Sport bucket includes adjustable head restraints and folding rear seat with trunk pass-through (Includes passenger-side seatback map pocket.) (Upgradeable to (AYZ) Recaro performance front seats. Includes passenger-side seatback map pocket.)
- Shift knob, leather-wrapped- Sill plate, Chevrolet
- Steering column, manual rake and telescopic- Steering wheel, 3-spoke leather-wrapped
- Theft-deterrent system, PASS-Key III - Trunk release, remote, located on driver-side

Option Packages

Factory Installed Packages

ENGINE, 6.2L V8 SFI

(400 hp [298.3 kW] @ 5900 rpm, 410 lb-ft of torque [553.5 N-m] @ 4300 rpm)

TRANSMISSION, 6-SPEED AUTOMATIC

includes TAPshift manual shift controls on steering wheel

\$1,185

REAR PARK ASSIST, ULTRASONIC

REAR VISION PACKAGE

includes (UD7) Rear Park Assist and (UVC) Rear Vision Camera

\$495

REARVIEW VISION CAMERA

display integrated into Color Touch Radio

REMOTE VEHICLE STARTER SYSTEM

includes Remote Keyless Entry

AXLE, 3.27 RATIO

EMISSIONS OVERRIDE, FEDERAL

(for vehicles ordered by dealers in Federal emission states with (YF5) or (NE1) emissions - Not required for vehicles being shipped to California, Connecticut, Delaware, Maine, Maryland, Massachusetts, New Jersey, New York, Oregon, Pennsylvania, Rhode Island, Vermont or Washington)

ASHEN GRAY METALLIC

STANDARD PAINT

1SS PREFERRED EQUIPMENT GROUP,

includes Standard Equipment

AUDIO SYSTEM WITH NAVIGATION, 7" DIAGONAL COLOR TOUCH SCREEN DISPLAY AM/FM STEREO WITH NAVIGATION DISPLAY

\$795

BLACK, SPORT CLOTH SEAT TRIM

SEATS, FRONT SPORT BUCKET

includes adjustable head restraints and folding rear seat with trunk pass-through

Option Packages Total

\$2,475

- Theft-deterrent system, PASS-Key III - Trunk release, remote, located on driver-side
- Visors, driver and front passenger vanity mirrors, covered
- Windows, power with driver and passenger Express-Down/Up

Mechanical

- Transmission, 6-speed manual- Alternator, 150 amps- Axle, 3.45 ratio
- Battery, maintenance-free with rundown protection and retained accessory power
- Brakes, 4-wheel antilock, 4-wheel disc (Brembo performance 4 piston front and 4 piston rear brakes.)
- Brakes, Brembo- Differential, limited slip
- Engine, 6.2L V8 SFI (426 hp [317.6 kW] @ 5900 rpm, 420 lb-ft of torque [567.0 N-m] @ 4600 rpm) (Requires (MN6) 6-speed manual transmission.)
- Exhaust, dual-outlet stainless-steel with bright tips - Rear wheel drive
- Steering, power, variable ratio, electric- Suspension, Performance



Auto Park Dallas

View this car on our website at autoparkdallas.com/7202931

Website: autoparkdallas.com

Phone: (214) 945-2601

Map: [2061 S Stemmons Fwy, Lewisville, TX 75067](#)



