

# 2015 Cadillac Escalade ESV Premium

View this car on our website at [bestusedcarbuys.com/7202925/ebrochure](http://bestusedcarbuys.com/7202925/ebrochure)

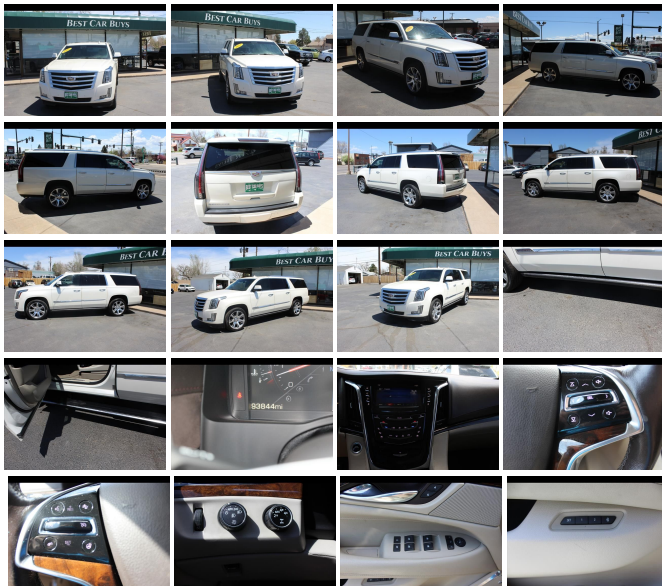


Our Price **\$33,999**

## Specifications:

<b>Year:</b>	2015
<b>VIN:</b>	1GYS4TKJ5FR604551
<b>Make:</b>	Cadillac
<b>Stock:</b>	FR604551
<b>Model/Trim:</b>	Escalade ESV Premium
<b>Condition:</b>	Pre-Owned
<b>Body:</b>	SUV
<b>Exterior:</b>	White Diamond Tricoat
<b>Engine:</b>	ENGINE, 6.2L V8 WITH ACTIVE FUEL MANAGEMENT
<b>Interior:</b>	Shale With Cocoa Accents Leather
<b>Transmission:</b>	Automatic w/Manual Shift
<b>Mileage:</b>	93,844
<b>Drivetrain:</b>	4 Wheel Drive
<b>Economy:</b>	City 14 / Highway 20

ALL WHEEL DRIVE \*\*\*\*\*WHITE DIAMOND \*\*\*\*\*ENTERTAINMENT SYSTEM\*\*\*\*22 INCH WHEELS\*\*\*FRESH INSPECTION EXCELLENT CONDITION\*\*\*



## Vehicle History Report : as Of 06/08/2023

**CARFAX**

### Snapshot

## 2015 CADILLAC ESCALADE ESV PREMIUM



No accidents or damage reported to CARFAX



35 Service history records



3 Previous owners



Types of owners: Personal lease  
Personal



Last owned in Missouri



93,844 Last reported odometer reading

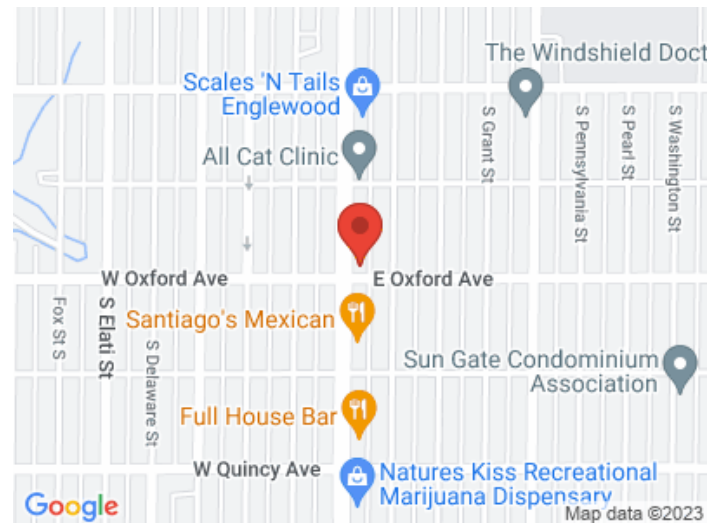


**FREE CARFAX Report**

See the full CARFAX Report for additional information

\*carfax Snapshot is a reflection of available information on the date the report was pulled. carfax is constantly being updated with new information and is subject to change at any time.

## Our Location :



2015 Cadillac Escalade ESV Premium

Best Car Buys III - 303-761-4202 - View this car on our website at [bestusedcarbuys.com/7202925/ebrochure](https://bestusedcarbuys.com/7202925/ebrochure)

## Installed Options

### Interior

- Seats, front bucket with leather seating surfaces, driver and front passenger, 12-way power seat adjusters including 4-way power lumbar control, independently heated driver and front passenger seat cushions and seatbacks (three settings) and 2-position driver memory
- Seats, second row bucket, power configurable (May be substituted for (ATT) second row 60/40 split-folding bench seats.)
- Active Noise Cancellation- Seats, heated and cooled driver and front passenger
- Seats, heated second row- Seat adjuster, front passenger 12-way power
- Seats, third row 60/40 split-bench, power, fold flat
- Console, floor with covered storage, large and small storage bins, dual cup holders, electronic climate controls and second row heated seat controls (inside console: auxiliary power outlet, two USB ports, SD card slot and auxiliary audio port), 110-volt outlet and auxiliary power outlet on the backside of console
- Floor covering, color-keyed carpeting
- Floor mats, color-keyed carpeted first and second row
- Steering wheel, power-tilt, color-keyed with wood and leather-wrapped rim, locking
- Steering column, power tilt and telescoping- Steering wheel, heated
- Steering wheel controls, mounted audio and Driver Information Center controls
- Tow/haul mode selector, button located at end of shift lever
- Driver Information Center with programmable personalization features such as door locking and unlocking, a trip computer with trip odometer and individual tire pressure read outs,

- fuel information such as range, average mpg, gallons used and oil life, and a message center that displays dozens of warning messages such as low fuel and door ajar
- Gauge cluster, 12" color, reconfigurable with Driver Information Center
- Head-Up Display, 4-color, reconfigurable
- Windows, power, with driver and front passenger Express-Up/Down and rear passengers Express-Down
- Windows, power all doors, comfort open (auto express down via key fob)
- Door locks, power programmable includes lockout protection and delayed locking
- Lock control, side door, electric- Pedals, power-adjustable for accelerator and brake
- Memory settings includes two "presets" for driver seat adjuster, outside rearview mirrors, power tilt/telescoping steering column and power-adjustable pedals
- Remote Keyless Entry, passive entry, extended range- Keyless start, push button
- Adaptive Remote Start- Cruise control, adaptive, full-speed range
- Universal Home Remote includes garage door opener, 3-channel programmable
- Theft-Deterrent Package includes (UTR) self-powered horn, (UTV) interior movement sensor and (UTU) vehicle inclination sensors, door lock shields and glass break sensors in rear quarter glass and liftgate window
- Theft-deterrent system, unauthorized entry, engine immobilizer
- Theft-deterrent alarm system, content theft alarm, self-powered horn
- Sensor, vehicle inclination, will detect vehicle being towed or jacked up
- Sensor, vehicle interior movement, will detect movement within the cabin of the vehicle
- Climate control, tri-zone automatic with individual climate settings for driver, front passenger and rear passengers
- Defogger, rear-window electric- Power outlet, 110-volt
- Wireless Charging located on the top of the center console (Requires separately purchased adapter.)
- Accents, interior, piano black and chrome finish
- Mirror, inside rearview auto-dimming, includes OnStar controls
- Lighting, interior, door handle release, door storage, console and footwell
- Lighting, interior, with theater dimming- Cargo net, rear

---

## Exterior

- Wheels, 22" x 9" (55.9 cm x 22.9 cm) 7-spoke aluminum with premium paint and chrome inserts (Upgradeable to (RPT) 22" x 9" 6-spoke chrome multi-featured design wheels or (RVA) 22" x 9" dual 7-spoke ultra-bright finish aluminum wheels.)
- Tires, P285/45R22 all-season, blackwall- Tire, spare P265/70R17 all-season, blackwall
- Wheel, full-size spare, 17" (43.2 cm) steel- Spare tire lock, hoist shaft
- Sunroof, power, tilt-sliding with express-open/-close and wind deflector (Not included when (A4K) sunroof delete is ordered.)
- Luggage rack, roof-mounted, chrome- Assist steps, running side board
- Moldings, bodyside, chrome- Shutters, front active aero
- Headlamps, LED high beam/low beam, light pipe
- Headlamps, IntelliBeam, automatic high beam on/off- Headlamps, automatic on/off
- Lamps, front cornering- Tail lamps, LED illumination
- Glass, deep-tinted (all windows, except light-tinted glass on windshield and driver- and front passenger-side glass)
- Glass, acoustic, laminated, windshield and front door glass- Windshield, solar absorbing
- Mirrors, outside heated power-adjustable, power-folding and driver-side auto-dimming, color-keyed with integrated turn signal indicators, ground illumination and programmable to provide curb view when in reverse
- Wipers, front intermittent, Rainsense- Wiper, rear intermittent with washer
- Door handles, illuminated
- Liftgate, body equipment, power, hands free open and close, programmable

---

## Safety

- Seats, front bucket with leather seating surfaces, driver and front passenger, 12-way power seat adjusters including 4-way power lumbar control, independently heated driver and front passenger seat cushions and seatbacks (three settings) and 2-position driver memory
- Seats, second row bucket, power configurable (May be substituted for (ATT) second row 60/40 split-folding bench seats.)
- Active Noise Cancellation- Seats, heated and cooled driver and front passenger
- Seats, heated second row- Seat adjuster, front passenger 12-way power
- Seats, third row 60/40 split-bench, power, fold flat
- Console, floor with covered storage, large and small storage bins, dual cup holders, electronic climate controls and second row heated seat controls (inside console: auxiliary power outlet, two USB ports, SD card slot and auxiliary audio port), 110-volt outlet and auxiliary power outlet on the backside of console
- Floor covering, color-keyed carpeting
- Floor mats, color-keyed carpeted first and second row
- Steering wheel, power-tilt, color-keyed with wood and leather-wrapped rim, locking
- Steering column, power tilt and telescoping- Steering wheel, heated
- Steering wheel controls, mounted audio and Driver Information Center controls
- Tow/haul mode selector, button located at end of shift lever
- Driver Information Center with programmable personalization features such as door locking and unlocking, a trip computer with trip odometer and individual tire pressure read outs,

fuel information such as range, average mpg, gallons used and oil life, and a message center that displays dozens of warning messages such as low fuel and door ajar

- Gauge cluster, 12" color, reconfigurable with Driver Information Center
- Head-Up Display, 4-color, reconfigurable
- Windows, power, with driver and front passenger Express-Up/Down and rear passengers Express-Down
- Windows, power all doors, comfort open (auto express down via key fob)
- Door locks, power programmable includes lockout protection and delayed locking
- Lock control, side door, electric- Pedals, power-adjustable for accelerator and brake
- Memory settings includes two "presets" for driver seat adjuster, outside rearview mirrors, power tilt/telescoping steering column and power-adjustable pedals
- Remote Keyless Entry, passive entry, extended range- Keyless start, push button
- Adaptive Remote Start- Cruise control, adaptive, full-speed range
- Universal Home Remote includes garage door opener, 3-channel programmable
- Theft-Deterrent Package includes (UTR) self-powered horn, (UTV) interior movement sensor and (UTU) vehicle inclination sensors, door lock shields and glass break sensors in rear quarter glass and liftgate window
- Theft-deterrent system, unauthorized entry, engine immobilizer
- Theft-deterrent alarm system, content theft alarm, self-powered horn
- Sensor, vehicle inclination, will detect vehicle being towed or jacked up
- Sensor, vehicle interior movement, will detect movement within the cabin of the vehicle
- Climate control, tri-zone automatic with individual climate settings for driver, front passenger and rear passengers
- Defogger, rear-window electric- Power outlet, 110-volt
- Wireless Charging located on the top of the center console (Requires separately purchased adapter.)
- Accents, interior, piano black and chrome finish
- Mirror, inside rearview auto-dimming, includes OnStar controls
- Lighting, interior, door handle release, door storage, console and footwell
- Lighting, interior, with theater dimming- Cargo net, rear

## Mechanical

- Engine, 6.2L V8 with Active Fuel Management Spark Ignition Direct Injection (SIDi) and Variable Valve Timing (VVT), includes aluminum block construction (420 hp [313.2 kW] @ 5600 rpm, 460 lb-ft of torque [621 N-m] @ 4100 rpm)
- Transmission, 8-speed automatic, 8L90- Air cleaner, high-capacity
- Transfer case, active, 2-speed with Neutral for dinghy/flat towing (4WD models only.)
- Differential, heavy-duty locking rear- Rear axle, 3.23 ratio- Four wheel drive
- Cooling, external engine oil cooler, heavy-duty
- Cooling, external transmission oil cooler, heavy-duty air-to-oil- Alternator, 170 amps
- Trailering equipment, heavy-duty includes trailering hitch platform, 7-wire harness with independent fused trailering circuits and 7-way sealed connector
- GVWR, 7500 lbs. (3402 kg) (4WD models only.)
- Suspension, Magnetic Ride Control with selectable sport mode
- Automatic load leveling, rear- Steering, Electronic Power Steering (EPS)
- Fueling system, capless- Brakes, 4-wheel antilock, 4-wheel disc
- Brakes, VAC power, 17" disc, with Adaptive Cruise Control and Automatic Collision Preparation
- Brakes, DuraLife rotors- Brakes, Hill Start-Assist/Hill hold
- Brake, parking, electronic powered

## Option Packages

### Factory Installed Packages

#### ENGINE, 6.2L V8 WITH ACTIVE FUEL MANAGEMENT

Spark Ignition Direct Injection (SIDi) and Variable Valve Timing (VVT), includes aluminum block construction (420 hp [313.2 kW] @ 5600 rpm, 460 lb-ft of torque [621 N-m] @ 4100 rpm)

[bestusedcarbuys.com](http://bestusedcarbuys.com)

303-761-4202

4094 S. Broadway

Englewood, CO 80113

© 2023 AutoRevo - All rights reserved. - Powered by AutoRevo