

2003 Ford Super Duty F-250 Diesel Ext.Cab XL

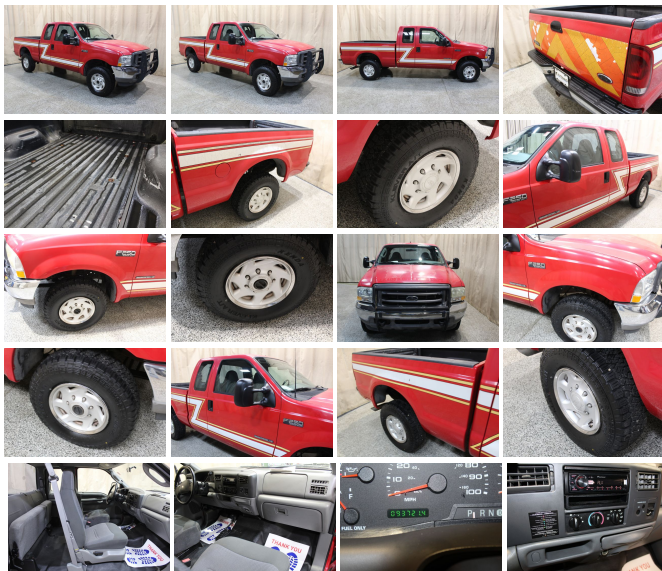
View this car on our website at autolandoutlets.com/7202791/ebrochure



Our Price **\$25,746**

Specifications:

Year:	2003
VIN:	1FTNX21F53EA38444
Make:	Ford
Stock:	11473
Model/Trim:	Super Duty F-250 Diesel Ext.Cab XL
Condition:	Pre-Owned
Body:	Pickup Truck
Exterior:	Red
Engine:	7.3L (444) DI V8 TURBO-DIESEL "POWER STROKE" ENGINE
Interior:	Gray Cloth
Transmission:	HD 4-SPEED AUTOMATIC TRANSMISSION W/OD
Mileage:	93,721
Drivetrain:	4 Wheel Drive



Are you in the market for a reliable and powerful pickup truck? Look no further than the 2003 Ford Super Duty F-250 Diesel Ext.Cab XL! With just 93721 miles on the odometer, this truck is ready to tackle any job you throw its way. The vibrant red exterior is sure to turn heads, while the comfortable gray cloth interior provides a cozy ride.

But what really sets this truck apart is the 7.3L (444) DI V8

TURBO-DIESEL "POWER STROKE" ENGINE under the hood. This engine is known for its incredible power and durability, making it the perfect choice for heavy-duty work. And with the HD 4-SPEED AUTOMATIC TRANSMISSION W/OD, you can rest assured that you'll have a smooth and seamless ride every time.

This truck also comes with a variety of manufacturer options and packages to make your life easier. Whether you're hauling equipment to a job site or towing a trailer on a weekend getaway, this truck has everything you need to get the job done right. And with its spacious extended cab, you'll have plenty of room for passengers and cargo alike.

So why wait? If you're looking for a reliable and powerful pickup truck, the 2003 Ford Super Duty F-250 Diesel Ext.Cab XL is the perfect choice. With its impressive engine, smooth transmission, and convenient features, this truck is sure to exceed your expectations. Don't miss out on this incredible opportunity to own one of the best trucks on the market today!

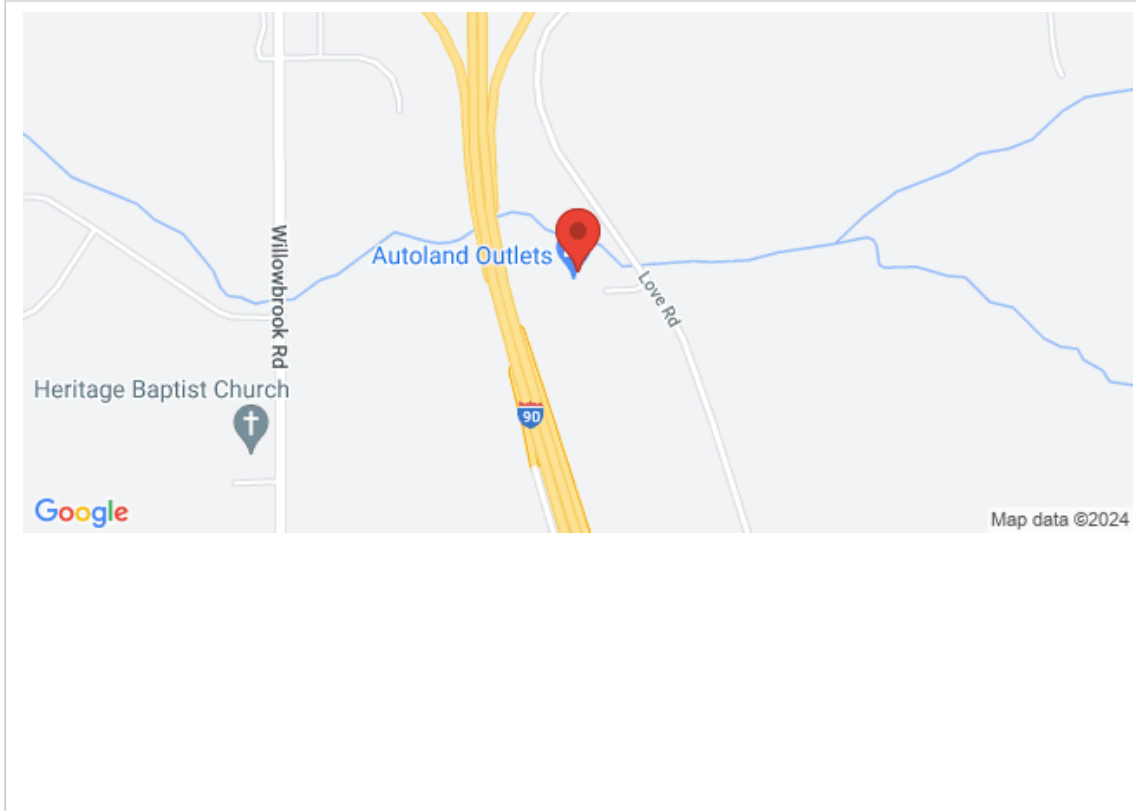
BEST TRUCKS ON THE MARKET TODAY :

Many of our trucks are Rust Free Southern Units!!! We Buy-Sell-Trade call us for Availability and Pricing 815-525-5000.Dealer Shall in no way be held liable for any errors or omissions to be found on these webpages. All prices are plus any applicable state taxes and service fees. We will do our best to keep all the information current and accurate,however the dealership should be contacted for final pricing and availability. Autoland Outlets is the midwest Premier Truck Store. Over 250 Trucks in Stock!! Over 150 are Diesels! 3/4 Tons, 1 Tons, Regular, Extended and Crew Cabs. Plus: Dump Trucks, Utility Trucks, and much more! Many New Trucks Arriving Daily!!! Thousands of Satisfied Customers! Over 25 Years in Business. Updated Daily 888-240-8674 ILLINOIS WARRANTY MAY APPLY CALL DEALERSHIP FOR DETAILS

2003 Ford Super Duty F-250 Diesel Ext.Cab XL

Autoland Outlets - 877-319-6060 - View this car on our website at autolandoutlets.com/7202791/ebrochure

Our Location :



2003 Ford Super Duty F-250 Diesel Ext.Cab XL

Autoland Outlets - 877-319-6060 - View this car on our website at autolandoutlets.com/7202791/ebrochure

Installed Options

Interior

- Electronic AM/FM stereo radio-inc: digital clock, (2) speakers
- HD vinyl front bench seat w/outboard headrests - Vinyl fold-up rear bench seat
- (4) air registers w/positive shut-off- 11.5" day/night mirror- Auxiliary pwr point
- Belt Minder seatbelt-not-buckled chime & flashing warning light
- Black vinyl full-floor covering- Black vinyl steering wheel
- Color-keyed instrument panel w/dual cupholders/glove box/ashtray/cigar lighter
- Color-keyed molded cloth headliner
- Color-keyed molded door trim panel-inc: hard armrest, grab handle, reflector
- Color-keyed scuff plates- Driver & passenger grab handles
- Dual color-keyed cloth sunvisors-inc: driver-side map strap, passenger-side mirror insert
- Dual color-keyed coat hooks- Front door operated dome lamp w/time delay off
- Front passenger-side roof ride handle- Grey fabric back panel cover- Inside hood release
- Instrumentation-inc: tachometer, trip odometer, voltmeter, oil pressure/ coolant temp/fuel gauges, indicator lights
- Rear door map pockets w/integrated "closed containers only" cupholders

Exterior

- Argent grille- Argent painted front/rear step bumper
- Black box-rail/tailgate top-edge moldings- Black door handles
- Black fold-away manual mirrors- Dual rear access doors- Flip-out rear quarter windows
- Front/rear license plate bracket- Interval wipers- Pickup box/cargo light
- Removable locking tailgate w/black handle- Sealed beam halogen headlamps
- Solar tinted glass- Valance air dam

Safety

- Electronic AM/FM stereo radio-inc: digital clock, (2) speakers
- HD vinyl front bench seat w/outboard headrests - Vinyl fold-up rear bench seat
- (4) air registers w/positive shut-off- 11.5" day/night mirror- Auxiliary pwr point
- Belt Minder seatbelt-not-buckled chime & flashing warning light
- Black vinyl full-floor covering- Black vinyl steering wheel
- Color-keyed instrument panel w/dual cupholders/glove box/ashtray/cigar lighter
- Color-keyed molded cloth headliner
- Color-keyed molded door trim panel-inc: hard armrest, grab handle, reflector
- Color-keyed scuff plates- Driver & passenger grab handles
- Dual color-keyed cloth sunvisors-inc: driver-side map strap, passenger-side mirror insert
- Dual color-keyed coat hooks- Front door operated dome lamp w/time delay off
- Front passenger-side roof ride handle- Grey fabric back panel cover- Inside hood release
- Instrumentation-inc: tachometer, trip odometer, voltmeter, oil pressure/ coolant temp/fuel gauges, indicator lights
- Rear door map pockets w/integrated "closed containers only" cupholders

Mechanical

- (5) LT235/85R16E all-season SBR BSW tires- 5.4L (330) SOHC SEFI V8 engine
- 6-speed manual transmission w/OD
- Full-size spare tire w/argent steel wheel, lock, underframe crank carrier
- Pwr 4-wheel disc brakes w/4-wheel anti-lock braking system- (2) front tow hooks
- 130 amp alternator- 142" WB
- 16" x 7.0" 8-hole styled steel wheels w/black center ornaments - 2-speed transfer case
- 29 gallon fuel tank- 3.73 axle ratio
- 6-3/4' pickup box w/tie-down hooks & partitionable/stackable storage
- 72 amp/hr (750 CCA) maintenance-free battery
- 8,800# GVWR (4700 front/6084 rear), springs (4700 front/6084 rear), axles (5200 front/6084 rear)
- Four wheel drive- Front stabilizer bar- HD gas shock absorbers
- Manual locking front hubs- Mono-beam front axle- Pwr steering
- Trailer tow pkg-inc: 7/4 pin combination connector, trailer brake wiring kit, trailer tow guide

Option Packages

Factory Installed Packages

7.3L (444) DI V8 TURBO-DIESEL "POWER STROKE" ENGINE	
-inc: 115 amp alt, dual 78 amp/hr batteries, engine block heater, exhaust back pressure valve, air filter minder	\$4,840
HD 4-SPEED AUTOMATIC TRANSMISSION W/OD	\$1,095
XL DECOR GROUP	
-inc: chrome front bumper w/lower valance center trim, chrome rear step bumper w/step pad & integral license plate bracket, single beam jewel effect headlamps, full wheel covers	\$175
AIR CONDITIONING	\$850
PAYLOAD PKG #1	
HD CLOTH FRONT BUCKET SEATS	
-inc: vinyl rear seat trim	\$390
Option Packages Total	\$7,350

877-319-6060

13156 Love Rd

Roscoe, IL 61073

© 2024 AutoRevo - All rights reserved. - Powered by AutoRevo