

2017 Jeep Cherokee Overland

View this car on our website at montanamotormall.com/7202596/ebrochure

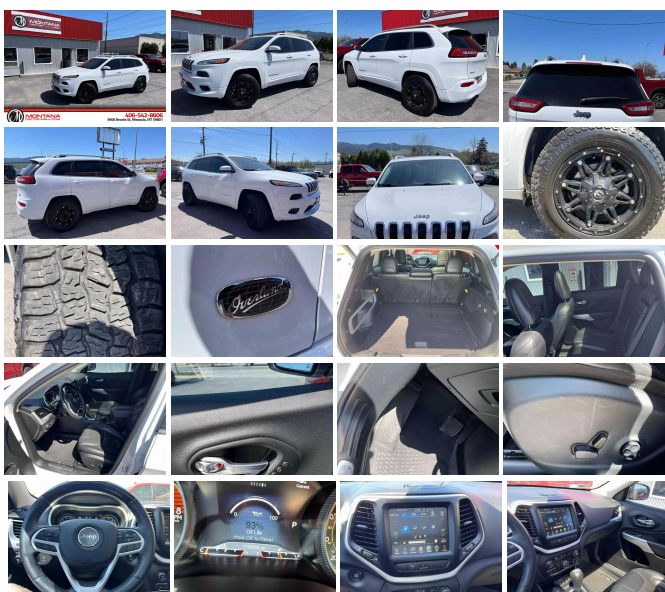


Our Price **\$18,995**

Specifications:

Year:	2017
VIN:	1C4PJMJS6HW583444
Make:	Jeep
Stock:	583444
Model/Trim:	Cherokee Overland
Condition:	Pre-Owned
Body:	SUV
Exterior:	White
Engine:	ENGINE: 3.2L V6 24V VVT W/ESS
Interior:	Black Leather
Transmission:	Automatic w/OD
Mileage:	116,257
Drivetrain:	4 Wheel Drive
Economy:	City 18 / Highway 26

Vehicle Runs Well, Smooth ride, Must test drive, Arctic cold a/c, Fully Loaded, Drives great



2017 Jeep Cherokee Overland

Montana Motor Mall - 406-542-8606 - View this car on our website at montanamotormall.com/7202596/ebrochure

Our Location :



2017 Jeep Cherokee Overland

Montana Motor Mall - 406-542-8606 - View this car on our website at montanamotormall.com/7202596/ebrochure

Installed Options

Interior

- Front Seats w/Leatherette Back Material and Power 4-Way Driver Lumbar
- 12-Way Power Driver Seat -inc: Power Recline, Height Adjustment, Fore/Aft Movement, Cushion Tilt and Power 4-Way Lumbar Support
- 12-Way Power Passenger Seat -inc: Power Recline, Height Adjustment, Fore/Aft Movement, Cushion Tilt and Power 4-Way Lumbar Support
- Gauges -inc: Speedometer, Odometer, Voltmeter, Engine Coolant Temp, Tachometer, Oil Temperature, Transmission Fluid Temp, Trip Odometer and Trip Computer
- Power Rear Windows and Fixed 3rd Row Windows
- Proximity Key For Doors And Push Button Start
- Remote Keyless Entry w/Integrated Key Transmitter, Illuminated Entry and Panic Button
- Premium Leather Trimmed Bucket Seats
- Memory Settings -inc: Driver Seat, Door Mirrors and Audio
- FOB Controls -inc: Cargo Access and Remote Engine Start
- Smart Device Remote Engine Start
- Power 1st Row Windows w/Driver And Passenger 1-Touch Up/Down
- Power Door Locks w/Autolock Feature- Trip Computer
- Driver And Passenger Heated-Cushion, Driver And Passenger Heated-Seatback and Ventilated Front Seats
- 60-40 Folding Split-Bench Front Facing Manual Reclining Fold Forward Seatback Leather Rear Seat w/Manual Fore/Aft
- Manual Tilt/Telescoping Steering Column
- Uconnect Access Mobile Hotspot Internet Access
- Heated Leather/Genuine Wood Steering Wheel- Illuminated Front Cupholder
- Rear Cupholder- 3 12V DC Power Outlets- Compass- Valet Function
- Remote Releases -Inc: Power Fuel- Garage Door Transmitter
- Cruise Control w/Steering Wheel Controls- Dual Zone Front Automatic Air Conditioning
- HVAC -inc: Underseat Ducts and Console Ducts - Illuminated Locking Glove Box
- Driver Foot Rest
- Interior Trim -inc: Deluxe Sound Insulation, Metal-Look Instrument Panel Insert, Simulated Wood Door Panel Insert. Metal-Look Console Insert. Chrome/Metal-Look Interior Accents

Option Packages

Factory Installed Packages

ENGINE: 3.2L V6 24V VVT W/ESS
-inc: Pentastar

and Leather Upholstered Dashboard

- Full Cloth Headliner- Vinyl Door Trim Insert- Leather Gear Shifter Material
- Day-Night Auto-Dimming Rearview Mirror
- Driver And Passenger Visor Vanity Mirrors w/Driver And Passenger Illumination
- Full Floor Console w/Covered Storage, Mini Overhead Console w/Storage, 3 12V DC Power Outlets and 1 120V AC Power Outlet
- Front And Rear Map Lights- Fade-To-Off Interior Lighting
- Full Carpet Floor Covering Berber -inc: Carpet Front And Rear Floor Mats
- Carpet Floor Trim- Cargo Area Concealed Storage- Cargo Net- Cargo Space Lights
- Integrated Navigation System w/Voice Activation- Smart Device Integration
- Covered Dashboard Storage, Driver And Passenger Door Bins
- Delayed Accessory Power- Systems Monitor- Redundant Digital Speedometer
- Outside Temp Gauge- Digital/Analog Appearance
- Manual Anti-Whiplash Adjustable Front Head Restraints and Manual Adjustable Rear Head Restraints
- Front Center Armrest and Rear Center Armrest- 1 Seatback Storage Pocket
- Perimeter Alarm- Sentry Key Immobilizer
- 3 12V DC Power Outlets and 1 120V AC Power Outlet - Air Filtration

Exterior

- Variable Intermittent Wipers w/Heated Wiper Park
- Tailgate/Rear Door Lock Included w/Power Door Locks
- Wheels: 18" x 7" Polished Aluminum- Tires: P225/60R18 BSW Touring
- Steel Spare Wheel- Compact Spare Tire Mounted Inside Under Cargo
- Body-Colored Front Bumper w/Chrome Rub Strip/Fascia Accent and Metal-Look Bumper Insert
- Body-Colored Rear Bumper w/Metal-Look Rub Strip/Fascia Accent
- Body-Colored Bodyside Cladding and Body-Colored Fender Flares
- Chrome Side Windows Trim- Body-Colored Door Handles
- Body-Colored Power Heated Side Mirrors w/Manual Folding
- Exterior Mirrors w/Supplemental Signals
- Fixed Rear Window w/Fixed Interval Wiper and Defroster- Deep Tinted Glass
- Composite/Galvanized Steel Panels- Lip Spoiler- Black Grille w/Chrome Surround
- Front License Plate Bracket- Power Liftgate Rear Cargo Access- Roof Rack Rails Only
- Auto On/Off Projector Beam High Intensity Low/High Beam Daytime Running Headlamps w/Delay-Off
- Front Fog Lamps- Cornering Lights- LED Brakelights- Exterior Mirrors Courtesy Lamps
- Laminated Glass

Safety

- Front Seats w/Leatherette Back Material and Power 4-Way Driver Lumbar
- 12-Way Power Driver Seat -inc: Power Recline, Height Adjustment, Fore/Aft Movement, Cushion Tilt and Power 4-Way Lumbar Support
- 12-Way Power Passenger Seat -inc: Power Recline, Height Adjustment, Fore/Aft Movement, Cushion Tilt and Power 4-Way Lumbar Support
- Gauges -inc: Speedometer, Odometer, Voltmeter, Engine Coolant Temp, Tachometer, Oil Temperature, Transmission Fluid Temp, Trip Odometer and Trip Computer
- Power Rear Windows and Fixed 3rd Row Windows
- Proximity Key For Doors And Push Button Start
- Remote Keyless Entry w/Integrated Key Transmitter, Illuminated Entry and Panic Button
- Premium Leather Trimmed Bucket Seats
- Memory Settings -inc: Driver Seat, Door Mirrors and Audio
- FOB Controls -inc: Cargo Access and Remote Engine Start
- Smart Device Remote Engine Start
- Power 1st Row Windows w/Driver And Passenger 1-Touch Up/Down
- Power Door Locks w/Autolock Feature- Trip Computer
- Driver And Passenger Heated-Cushion, Driver And Passenger Heated-Seatback and Ventilated Front Seats
- 60-40 Folding Split-Bench Front Facing Manual Reclining Fold Forward Seatback Leather Rear Seat w/Manual Fore/Aft
- Manual Tilt/Telescoping Steering Column
- Uconnect Access Mobile Hotspot Internet Access
- Heated Leather/Genuine Wood Steering Wheel- Illuminated Front Cupholder
- Rear Cupholder- 3 12V DC Power Outlets- Compass- Valet Function
- Remote Releases -Inc: Power Fuel- Garage Door Transmitter
- Cruise Control w/Steering Wheel Controls- Dual Zone Front Automatic Air Conditioning
- HVAC -inc: Underseat Ducts and Console Ducts - Illuminated Locking Glove Box
- Driver Foot Rest
- Interior Trim -inc: Deluxe Sound Insulation, Metal-Look Instrument Panel Insert, Simulated Wood Door Panel Insert, Metal-Look Console Insert, Chrome/Metal-Look Interior Accents and Leather Upholstered Dashboard
- Full Cloth Headliner- Vinyl Door Trim Insert- Leather Gear Shifter Material

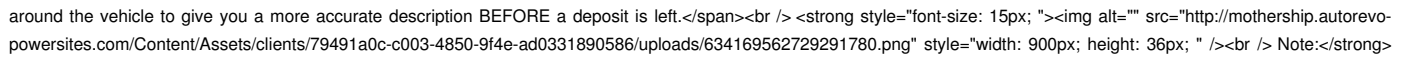
- Day-Night Auto-Dimming Rearview Mirror
- Driver And Passenger Visor Vanity Mirrors w/Driver And Passenger Illumination
- Full Floor Console w/Covered Storage, Mini Overhead Console w/Storage, 3 12V DC Power Outlets and 1 120V AC Power Outlet
- Front And Rear Map Lights- Fade-To-Off Interior Lighting
- Full Carpet Floor Covering Berber -inc: Carpet Front And Rear Floor Mats
- Carpet Floor Trim- Cargo Area Concealed Storage- Cargo Net- Cargo Space Lights
- Integrated Navigation System w/Voice Activation- Smart Device Integration
- Covered Dashboard Storage, Driver And Passenger Door Bins
- Delayed Accessory Power- Systems Monitor- Redundant Digital Speedometer
- Outside Temp Gauge- Digital/Analog Appearance
- Manual Anti-Whiplash Adjustable Front Head Restraints and Manual Adjustable Rear Head Restraints
- Front Center Armrest and Rear Center Armrest- 1 Seatback Storage Pocket
- Perimeter Alarm- Sentry Key Immobilizer
- 3 12V DC Power Outlets and 1 120V AC Power Outlet - Air Filtration

Mechanical

- Transmission: 9-Speed 948TE Automatic -inc: 1 speed PTU
- Transmission w/Driver Selectable Mode and Sequential Shift Control
- 4-Wheel Disc Brakes w/4-Wheel ABS, Front Vented Discs, Brake Assist, Hill Hold Control and Electric Parking Brake
- Engine: 3.2L V6 24V VVT w/ESS -inc: Pentastar - 3.25 Axle Ratio- Off Road Suspension
- GVWR: 5,500 lbs- 50 State Emissions- Engine Auto Stop-Start Feature
- Electronic Transfer Case- Automatic Full-Time Four-Wheel Drive- Engine Oil Cooler
- Auxiliary Transmission Oil Cooler- 160 Amp Alternator
- 700CCA Maintenance-Free Battery w/Run Down Protection
- Towing Equipment -inc: Trailer Sway Control - 1000# Maximum Payload
- Gas-Pressurized Shock Absorbers- Front And Rear Anti-Roll Bars
- Electric Power-Assist Speed-Sensing Steering- 15.8 Gal. Fuel Tank
- Quasi-Dual Stainless Steel Exhaust w/Chrome Tailpipe Finisher
- Permanent Locking Hubs- Strut Front Suspension w/Coil Springs
- Multi-Link Rear Suspension w/Coil Springs

Please understand, we do our professional best to describe in detail the condition of our vehicles, however, we are only human and these are used vehicles. Therefore, Montana Motor Mall, and its employees, will not be held accountable for errors or omissions in the description of the above vehicle or typographical errors in any of our vehicle listings. All vehicle options, specs, features, color descriptions, history, paint history, maintenance records and manufacturer's warranty information should be researched and confirmed by the buyer or third party service before completing the vehicle purchase. Helpful research information can be found at <http://www.edmunds.com/> Edminds.com http://www.autocheck.com/consumers/gatewayAction.do?siteID=0&WT.mc_id=0 AutoCheck.com <http://carfax.com/> CarFax.com, etc.

At our dealership we work very hard to accurately describe our vehicles through text descriptions and elaborate photos. We hand select each vehicle we put on eBay. The vehicle shown is ALWAYS the vehicle being sold. When you purchase any pre-owned vehicle it is not a new vehicle. Any pre-owned vehicle can/will have normal wear such as, but not limited to, minor scratches, scuffs, chips and regular interior wear. Our dealership works very hard to accurately describe our vehicles through text descriptions and elaborate photos. It have normal wear, which may include a few scattered rock chips, light scuffs, and gentle interior wear, our policy is to disclose anything beyond that and we encourage pre-purchase inspections. Please look over the photos carefully as they are part of the description. Our sales staff in Missoula, Montana is available to assist in answering any specific cosmetic questions and will gladly walk around the vehicle to give you a more accurate description BEFORE a deposit is left.

 Note:

Our listing software provider allows the VIN to decode the ORIGINAL FACTORY EQUIPMENT that this vehicle had when it rolled off the factory line. There may/may not be additional dealer equipment that was added by the original selling dealer that will not be listed in this section. There may/may not also have items listed as original factory equipment that are no longer with the vehicle we are currently selling. For example: 2 sets of keys, keyless entry remotes, owner's manual, factory floor mats, Navigation discs, first aid kits, factory tires/size/load rating, etc. Please refer to the photos we have taken or ask us your specific concern to be certain there is no confusion. We will not be responsible for any discrepancies between the Original Factory Equipment section and what is presented in the photos or description. Please do not assume and allow us to put our answers to your specific concerns in writing. Montana Motor Mall is fully responsible for all content in this listing. Human error is possible and we reserve the right to reverse any sale based on pricing/listing error which can occur at any time without notice. All inventory is listed for sale locally, therefore all are subject to sale at any time and may not be available. Everyone is encouraged to call with questions or concerns.

Please understand, we do our very best to describe in detail the condition of our vehicles, however, we are only human and these are used vehicles, therefore, Montana Motor Mall, and their employees or agents will not be held accountable for errors or omissions in the description of the above vehicle or typographical errors in any of our vehicle listings. MONTANA MOTOR MALL MAKES EVERY EFFORT TO BE AS TRANSPARENT AS POSSIBLE WHEN OFFERING INFORMATION ABOUT THE INVENTORY ON OUR

SITE. WE WILL DISCLOSE WHAT WE KNOW AND WHAT WE HAVE LEARNED REGARDING EACH VEHICLE, WHETHER IT IS PAINTWORK, PERFORMANCE ENHANCING EQUIPMENT OR ALTERED EXHAUST / EMISSIONS. WE DO NOT INSTALL ANY OF THIS TYPE OF EQUIPMENT, NOR DO WE TEST ITS PERFORMANCE. WE RECOMMEND AN INDEPENDENT INSPECTION BUT WE DO NOT REQUIRE YOU TO HAVE ONE DONE, HOWEVER WE WILL NOT BE HELD RESPONSIBLE FOR ANY FINDINGS AFTERWARDS SHOULD YOU CHOOSE TO DISCARD YOUR RIGHT TO HAVE ONE DONE. All vehicle options (power opts, cd players/changers, audio equipment, entertainment systems/dvd, navigation systems/nav dvd, etc), specs, features, color descriptions, history, paint history, maintenance records and manufacturer's warranty information should be researched and confirmed by the buyer or third party service before completing purchase. Helpful research information can be found at Edmunds.com, AutoCheck.com, carchex.com, CarFax.com, etc...
Please look over the photos carefully as they are part of the description. When you purchase any pre-owned vehicle it is not a new vehicle. Any pre-owned vehicle can/will have normal wear, which may include, but not limited to, rock chips, scratches, scuffs, and minor interior wear. Our policy is to disclose anything beyond that and we encourage pre-purchase inspections. We will check for and disclose paint work found on any vehicle, but keep in mind - this is an imperfect science. Please bear in mind that often truck owners may choose to alter factory emissions and/or exhaust to enhance performance or fuel economy. We often do acquire trucks that have these performance enhancing equipment already installed. This equipment may alter original emissions equipment or void factory warranties. We do not test or alter this equipment. If this is a concern of yours, please exercise your right to have a pre-purchase inspection prior to leaving your deposit. Our sales staff is available to assist in answering any specific cosmetic questions and will gladly walk around a vehicle to give you a more accurate description. BEFORE a deposit is left. Ultimately, it is up to the potential buyer to do their due diligence. Montana Motor Mall does not want to hide anything and we encourage everyone to have a pre-buyer's inspection done before purchase.

Montana Motor Mall
montanamotormall.com
406-542-8606
3906 Brooks St
Missoula, MT 59801

© 2024 AutoRevo - All rights reserved. - Powered by AutoRevo