

2022 Ram 2500 Lone Star Silver 4X4 DIESEL, BACK-UP CAM, 20'S, 37K

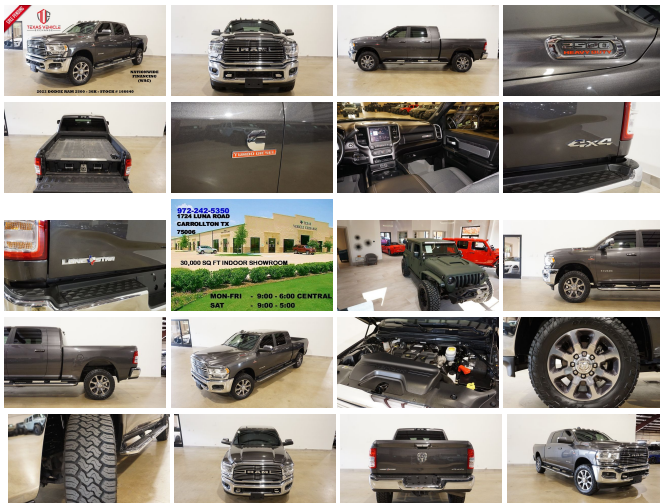
View this car on our website at tveauto.com/7200950/ebrochure



Our Price **\$60,900**

Specifications:

Year:	2022
VIN:	3C6UR5ML4NG166640
Make:	Ram
Stock:	166640
Model/Trim:	2500 Lone Star Silver 4X4 DIESEL, BACK-UP CAM, 20'S, 37K
Condition:	Pre-Owned
Body:	Pickup Truck
Exterior:	Granite Crystal Metallic Clearcoat
Engine:	ENGINE: 6.7L I6 CUMMINS TURBO DIESEL
Interior:	Black Cloth
Transmission:	TRANSMISSION: 6-SPEED AUTOMATIC (68RFE)
Mileage:	37,285
Drivetrain:	4 Wheel Drive



NATION WIDE FINANCING

SUBMIT CREDIT APP [WWW.TVEAUTO.COM](https://www.tveauto.com)

OR CALL 972-242-5350

2022 RAM 2500 LONE STAR SILVER EDITION MEGA CAB 4X4, 6.7L CUMMINS TURBO DIESEL ENGINE, AUTOMATIC TRANSMISSION, ONLY 37K, GRANITE CRYSTAL METALLIC W/BLACK CLOTH INTERIOR, CARFAX REPORTS 2 OWNERS NO ACCIDENTS, APPEARS TO BE A NON-SMOKER, PUSH BUTTON START, FOGLIGHTS, OVERHEAD CAB LIGHTS, BACK-UP CAMERA, CARGO CAMERA, CHROME TUBULAR STEPS, POWER WINDOWS POWER DOOR LOCKS POWER

WINDOWS, POWER DOOR LOCKS, POWER FOLDING TRAILER TOWING HEATED MIRRORS WITH TURN SIGNALS, TILT STEERING WHEEL WITH AUDIO & CRUISE CONTROLS, DRIVER POWER SEAT, POWER ADJUSTABLE PEDALS, TRACTION CONTROL, TOW/HAIL BUTTON, TRAILER BRAKE CONTROL, ICE COLD A/C, ALPINE AM/FM/SIRIUS STEREO, U-CONNECT, SELF DIMMING REAR VIEW MIRROR, HOMELINK GARAGE CONTROLS, DUAL LIGHTED VANITY MIRRORS, REAR A/C VENTS, SPRAY IN BEDLINER, DECKED DRAWED SYSTEM, TOW PACKAGE WITH RECEIVER HITCH, RUBBER FLOOR MATS, OWNER'S MANUAL, 2 KEYS/2 REMOTES. 20" POLISHED ALUMINUM WHEELS, FRONT TIRES ARE TOYO OPEN COUNTRY C/T LT285/60R/20, REAR TIRES ARE TOYO OPEN COUNTRY C/T LT285/60R/20. RUNS AND DRIVES GREAT. GIVE US A CALL @ 972-242-5350 OR STOP BY FOR A TEST DRIVE. 1724 LUNA RD IN CARROLLTON - 2 MILES NORTH OF 635. CLICK ON CARFAX ICON TO VIEW A FULL REPORT AT NO COST TO YOU.

2022 Ram 2500 Lone Star Silver 4X4 DIESEL, BACK-UP CAM, 20'S, 37K

Texas Vehicle Exchange - 972-242-5350 - View this car on our website at tveauto.com/7200950/ebrochure

Our Location :



2022 Ram 2500 Lone Star Silver 4X4 DIESEL, BACK-UP CAM, 20'S, 37K
 Texas Vehicle Exchange - 972-242-5350 - View this car on our website at tveauto.com/7200950/ebrochure

Installed Options

Interior

- 40/20/40 Split Bench Seat- Apple CarPlay- Cloth 40/20/40 Bench Seat
- Full Carpet Floor Covering -inc: Carpet Front And Rear Floor Mats
- Gauges -inc: Speedometer, Odometer, Voltmeter, Oil Pressure, Engine Coolant Temp, Tachometer, Oil Temperature, Transmission Fluid Temp, Engine Hour Meter, Trip Odometer and Trip Computer
- Google Android Auto- Integrated Voice Command w/Bluetooth- Manual Air Conditioning
- Passenger Visor Vanity Mirror w/Passenger Illumination
- Power 1st Row Windows w/Driver And Passenger 1-Touch Up/Down
- Power Door Locks w/Autolock Feature- Power Rear Windows
- Remote Keyless Entry w/Integrated Key Transmitter, Illuminated Entry and Panic Button
- Trip Computer- 2 12V DC Power Outlets- 2 Way Rear Headrest Seat
- 4 Way Front Headrests- 4-Way Driver Seat -inc: Manual Recline and Fore/Aft Movement
- 4G LTE Wi-Fi Hot Spot- 8.4" Touchscreen Display- Air Filtration- Analog Appearance
- Armrests w/Storage and Rear Center Armrest- Center Stack Storage Drawer- Compass
- Connectivity - US/Canada- Cruise Control w/Steering Wheel Controls
- Dashboard Storage, Driver / Passenger And Rear Door Bins - Day-Night Rearview Mirror
- Delayed Accessory Power- Driver Information Center- Fade-To-Off Interior Lighting
- Front Armrest w/Cupholders- Front Facing Manual Reclining Cloth Rear Seat
- Front Map Lights- Full Cloth Headliner- Global Telematics Box Module (TBM)
- Glove Box- HVAC -inc: Underseat Ducts and Console Ducts
- Interior Trim -inc: Metal-Look Instrument Panel Insert, Metal-Look Door Panel Insert and Chrome/Metal-Look Interior Accents
- Manual Adjust 4-Way Front Passenger Seat - Manual Tilt Steering Column
- Mini Overhead Console and 2 12V DC Power Outlets- Outside Temp Gauge
- Passenger Seat- Pickup Cargo Box Lights- Proximity Key For Push Button Start Only
- Rear 60/40 Folding Seat- Rear Cupholder- Redundant Digital Speedometer
- Seats w/Cloth Back Material- Sentry Key Immobilizer- SiriusXM Radio Service
- Storage Tray- Urethane Gear Shifter Material- Valet Function- Vinyl Door Trim Insert
- Voice Recorder

Option Packages

Factory Installed Packages

ENGINE: 6.7L I6 CUMMINS TURBO DIESEL -inc: Selective Catalytic Reduction (Urea), Dual 730 Amp Maintenance Free Batteries, Cummins Turbo Diesel Badge, Heavy Duty Engine Cooling, Supplemental Heater, Tow Hooks, Diesel Exhaust Brake, Front Bumper Sight Shields, Capless Fuel Fill w/o Discriminator, Distribution Services Tracking	\$9,695
TRANSMISSION: 6-SPEED AUTOMATIC (68RFE) -inc: Chrome Accent Shift Control	
9 ALPINE SPEAKERS W/SUBWOOFER	\$595
ANTI-SPIN DIFFERENTIAL REAR AXLE	\$495
CENTER STOP LAMP W/CARGO VIEW CAMERA	\$345
CLEARANCE LAMPS	\$95
LEVEL 1 EQUIPMENT GROUP -inc: Locking Lower Glove Box, Rear View Auto Dim Mirror, Power Adjustable Pedals, Leather	\$1,740

Exterior

- Black Power Side Mirrors w/Convex Spotter and Manual Folding
- Exterior Mirrors w/Heating Element- Exterior Mirrors w/Supplemental Signals
- Tailgate/Rear Door Lock Included w/Power Door Locks- Variable Intermittent Wipers
- Wheels: 18" x 8.0" Steel Chrome Clad
- Auto On/Off Aero-Composite Halogen Daytime Running Headlamps w/Delay-Off
- Black Grille w/Chrome Surround
- Black Side Windows Trim and Black Front Windshield Trim - Body-Colored Door Handles
- Cargo Lamp w/High Mount Stop Light- Center Hub- Chrome Front Bumper
- Chrome Rear Step Bumper- Clearcoat Paint- Deep Tinted Glass
- Exterior Mirrors Courtesy Lamps- Fixed Rear Window
- Full-Size Spare Tire Stored Underbody w/Crankdown- Galvanized Steel/Aluminum Panels
- Laminated Glass- Mirror Running Lights- Regular Box Style- Selectable Tire Fill Alert
- Steel Spare Wheel- Tailgate Rear Cargo Access- Tires: LT275/70R18E BSW All Season
- Trailer Tow Mirrors- Vendor Painted Cargo Box- Vendor Painted Cargo Box Tracking

Safety

- 40/20/40 Split Bench Seat- Apple CarPlay- Cloth 40/20/40 Bench Seat
- Full Carpet Floor Covering -inc: Carpet Front And Rear Floor Mats
- Gauges -inc: Speedometer, Odometer, Voltmeter, Oil Pressure, Engine Coolant Temp, Tachometer, Oil Temperature, Transmission Fluid Temp, Engine Hour Meter, Trip Odometer and Trip Computer
- Google Android Auto- Integrated Voice Command w/Bluetooth- Manual Air Conditioning
- Passenger Visor Vanity Mirror w/Passenger Illumination
- Power 1st Row Windows w/Driver And Passenger 1-Touch Up/Down
- Power Door Locks w/Autolock Feature- Power Rear Windows
- Remote Keyless Entry w/Integrated Key Transmitter, Illuminated Entry and Panic Button
- Trip Computer- 2 12V DC Power Outlets- 2 Way Rear Headrest Seat
- 4 Way Front Headrests- 4-Way Driver Seat -inc: Manual Recline and Fore/Aft Movement
- 4G LTE Wi-Fi Hot Spot- 8.4" Touchscreen Display- Air Filtration- Analog Appearance
- Armrests w/Storage and Rear Center Armrest- Center Stack Storage Drawer- Compass
- Connectivity - US/Canada- Cruise Control w/Steering Wheel Controls
- Dashboard Storage, Driver / Passenger And Rear Door Bins - Day-Night Rearview Mirror
- Delayed Accessory Power- Driver Information Center- Fade-To-Off Interior Lighting
- Front Armrest w/Cupholders- Front Facing Manual Reclining Cloth Rear Seat
- Front Map Lights- Full Cloth Headliner- Global Telematics Box Module (TBM)
- Glove Box- HVAC -inc: Underseat Ducts and Console Ducts
- Interior Trim -inc: Metal-Look Instrument Panel Insert, Metal-Look Door Panel Insert and Chrome/Metal-Look Interior Accents
- Manual Adjust 4-Way Front Passenger Seat - Manual Tilt Steering Column
- Mini Overhead Console and 2 12V DC Power Outlets- Outside Temp Gauge
- Passenger Seat- Pickup Cargo Box Lights- Proximity Key For Push Button Start Only
- Rear 60/40 Folding Seat- Rear Cupholder- Redundant Digital Speedometer
- Seats w/Cloth Back Material- Sentry Key Immobilizer- SiriusXM Radio Service
- Storage Tray- Urethane Gear Shifter Material- Valet Function- Vinyl Door Trim Insert
- Voice Recorder

Mechanical

- 4-Wheel Disc Brakes w/4-Wheel ABS, Front And Rear Vented Discs, Brake Assist and Hill Hold Control
- Class V Towing Equipment -inc: Hitch, Brake Controller and Trailer Sway Control
- Engine: 6.4L V8 Heavy Duty HEMI MDS
- Transmission w/Driver Selectable Mode and Sequential Shift Control
- Transmission: 8-Speed Auto (8HP75-LCV)- 180 Amp Alternator
- 2940# Maximum Payload- 3.73 Axle Ratio- 31 Gal. Fuel Tank- 50 State Emissions
- 730CCA Maintenance-Free Battery w/Run Down Protection- Auto Locking Hubs
- Electronic Transfer Case- Electronically Controlled Throttle
- Front And Rear Anti-Roll Bars- GVWR: 10,000 lbs- HD Shock Absorbers
- HD Suspension- Hydraulic Power-Assist Steering
- Multi-Link Front Suspension w/Coil Springs- Part-Time Four-Wheel Drive
- Single Stainless Steel Exhaust- Solid Axle Rear Suspension w/Coil Springs- Tip Start
- Trailer Wiring Harness

Wrapped Steering Wheel, Hear Dome w/On/Off Switch Lamp, Front Fog Lamps, Power Folding Black Trailer Tow Mirrors, Steering Wheel Mounted Audio Controls, Lone Star IP Badge, Dual Glove Boxes, Glove Box Lamp, Footwell Courtesy Lamp, Universal Garage Door Opener, Power-Folding Mirrors, Foam Bottle Insert (Door Trim Panel), Wheels: 18" x 8.0" Polished Aluminum, Sun Visors w/Illuminated Vanity Mirrors

LONE STAR SILVER EDITION

-inc: Chrome Tow Hooks (DISC), Chrome Flat Wheel-to-Wheel Side Steps, Chrome Belt Moldings, Body Color/Chrome Door Handles, Wheels: 20" x 8.0" Polished Aluminum (DISC), Tires: LT285/60R20E OWL On/Off Road, Black Interior Accents, Power-Folding Mirrors, Grille w/Bright Billets & Accents

\$1,995

MOPAR SPRAY IN BEDLINER

\$600

QUICK ORDER PACKAGE 2HY LONE STAR

-inc: Engine: 6.7L I6 Cummins Turbo Diesel, Transmission: 6-Speed Automatic (68RFE), Lone Star Badge

BLACK, PREMIUM CLOTH BUCKET SEATS

-inc: Bucket Seats, Power Adjust 8-Way Driver Seat, Front Seat Back Map Pockets, Power 2-Way Driver Lumbar Adjust, Full Length Upgraded Floor Console

\$295

Option Packages Total

\$15,855

tveauto.com

972-242-5350

1724 Luna Road

Carrollton, TX 75006

© 2024 AutoRevo - All rights reserved. - Powered by AutoRevo