

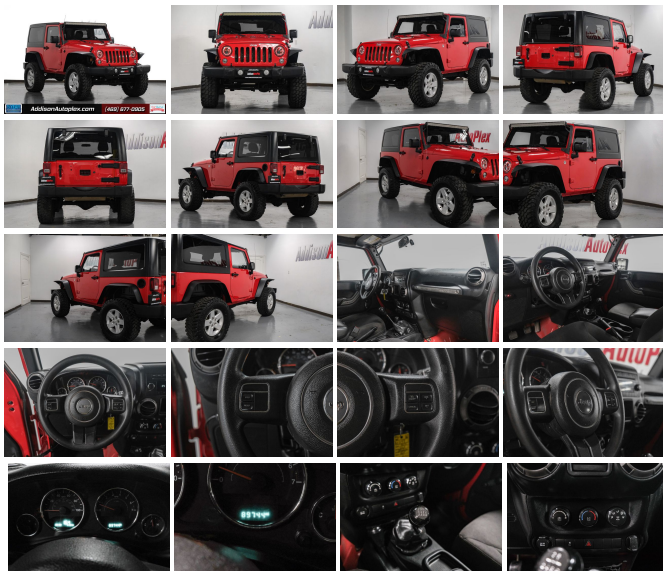
2015 Jeep Wrangler Sport Manual Trans with No A/C

View this car on our website at addisonautoplex.com/7200331/ebrochure

Sales Price **\$18,498**

Specifications:

Year: 2015
VIN: 1C4AJWAG0FL500103
Make: Jeep
Stock: M1158
Model/Trim: Wrangler Sport Manual Trans with No A/C
Condition: Pre-Owned
Body: SUV
Exterior: Firecracker Red
Engine: ENGINE: 3.6L PENTASTAR VVT V6
Interior: Black Cloth
Transmission: Automatic w/OD
Mileage: 89,744
Drivetrain: 4 Wheel Drive
Economy: City 14 / Highway 11



2015 Jeep Wrangler Sport Manual Trans with No A/C

Addison Autoplex - (469) 677-0905 - View this car on our website at addisonautoplex.com/7200331/ebrochure

Vehicle History Report : as Of 10/02/2023

CARFAX

Snapshot

2015 JEEP WRANGLER SPORT



No accidents or damage reported to CARFAX



7 Service history records



3 Previous owners



Last owned in Oklahoma



36 Detailed records available



89,762 Last reported odometer reading



FREE CARFAX Report

See the full CARFAX Report for additional information

*carfax Snapshot is a reflection of available information on the date the report was pulled. carfax is constantly being updated with new information and is subject to change at any time.

Our Location :



2015 Jeep Wrangler Sport Manual Trans with No A/C

Addison Autoplex - (469) 677-0905 - View this car on our website at addisonautoplex.com/7200331/ebrochure

Installed Options

Interior

- 2 12V DC Power Outlets- 2 Seatback Storage Pockets
- 4-Way Passenger Seat -inc: Manual Recline, Fore/Aft Movement and Manual Rear Seat Easy Entry
- 6-Way Driver Seat -inc: Manual Recline, Height Adjustment and Fore/Aft Movement
- Analog Appearance- Carpet Floor Trim, Carpet And Rubber Mat- Cloth Bucket Seats
- Compass- Cruise Control w/Steering Wheel Controls- Day-Night Rearview Mirror
- Delayed Accessory Power- Driver And Passenger Visor Vanity Mirrors
- Fade-To-Off Interior Lighting- Front Centre Armrest w/Storage- Front Cupholder
- Full Carpet Floor Covering -inc: Carpet Front Floor Mats
- Full Floor Console w/Locking Storage and 2 12V DC Power Outlets
- Gauges -inc: Speedometer, Odometer, Engine Coolant Temp, Tachometer, Trip Odometer and Trip Computer
- Instrument Panel Bin, Dashboard Storage, Driver And Passenger Door Bins
- Interior Trim -inc: Metal-Look Instrument Panel Insert, Metal-Look Door Panel Insert and Metal-Look Interior Accents
- Locking Cargo Area Concealed Storage- Locking Glove Box- Manual 1st Row Windows
- Manual Adjustable Front Head Restraints and Fixed Rear Head Restraints
- Manual Tilt Steering Column- Outside Temp Gauge- Rear Cupholder
- Removable Full Folding Bench Front Facing Tumble Forward Rear Seat

Option Packages

Factory Installed Packages

ENGINE: 3.6L PENTASTAR VVT V6

32" TIRE & WHEEL GROUP

-inc: BF Goodrich Brand Tires, Performance Suspension (DISC), Wheels: 17" x 7.5" Polished Mineral Grey (DISC), Tires: LT255/75R17 BSW Off Road (DISC)

\$400

QUICK ORDER PACKAGE 23B

-inc: Engine: 3.6L Pentastar VVT V6, Transmission: 6-Speed Manual

QUICK ORDER PACKAGE 24B

-inc: Engine: 3.6L Pentastar VVT V6, Transmission: Automatic

STANDARD PAINT

- Removable Rear Windows- Sentry Key Immobilizer- Trip Computer
- Urethane Gear Shifter Material

Exterior

- Aero-Composite Halogen Daytime Running Headlamps- Black Door Handles
- Black Fender Flares- Black Front Bumper w/2 Tow Hooks
- Black Manual Side Mirrors w/Manual Folding- Black Rear Bumper w/1 Tow Hook
- Black Side Windows Trim- Body-Coloured Grille- Clearcoat Paint
- Conventional Rear Cargo Access- Convertible w/Fixed Roll-Over Protection
- Front Fog Lamps- Full-Size Spare Tire Mounted Outside Rear
- Fully Galvanized Steel Panels- Goodyear Brand Tires- Light Tinted Glass
- Manual Tailgate/Rear Door Lock- Removable Rear Window- Steel Spare Wheel
- Sunrider Soft Top- Tires: P225/75R16 BSW On/Off Road- Variable Intermittent Wipers
- Wheels: 16" x 7" Slot-Spoke Styled Steel

Safety

- 2 12V DC Power Outlets- 2 Seatback Storage Pockets
- 4-Way Passenger Seat -inc: Manual Recline, Fore/Aft Movement and Manual Rear Seat Easy Entry
- 6-Way Driver Seat -inc: Manual Recline, Height Adjustment and Fore/Aft Movement
- Analog Appearance- Carpet Floor Trim, Carpet And Rubber Mat- Cloth Bucket Seats
- Compass- Cruise Control w/Steering Wheel Controls- Day-Night Rearview Mirror
- Delayed Accessory Power- Driver And Passenger Visor Vanity Mirrors
- Fade-To-Off Interior Lighting- Front Centre Armrest w/Storage- Front Cupholder
- Full Carpet Floor Covering -inc: Carpet Front Floor Mats
- Full Floor Console w/Locking Storage and 2 12V DC Power Outlets
- Gauges -inc: Speedometer, Odometer, Engine Coolant Temp, Tachometer, Trip Odometer and Trip Computer
- Instrument Panel Bin, Dashboard Storage, Driver And Passenger Door Bins
- Interior Trim -inc: Metal-Look Instrument Panel Insert, Metal-Look Door Panel Insert and Metal-Look Interior Accents
- Locking Cargo Area Concealed Storage- Locking Glove Box- Manual 1st Row Windows
- Manual Adjustable Front Head Restraints and Fixed Rear Head Restraints
- Manual Tilt Steering Column- Outside Temp Gauge- Rear Cupholder
- Removable Full Folding Bench Front Facing Tumble Forward Rear Seat
- Removable Rear Windows- Sentry Key Immobilizer- Trip Computer
- Urethane Gear Shifter Material

Mechanical

- 160 Amp Alternator- 2 Skid Plates- 3.21 Rear Axle Ratio
- 4-Wheel Disc Brakes w/4-Wheel ABS, Front And Rear Vented Discs, Brake Assist and Hill Hold Control
- 453.6 Kgs Maximum Payload- 600CCA Maintenance-Free Battery- 70 L Fuel Tank
- Auto Locking Hubs- Block Heater- Brake Actuated Limited Slip Differential
- Engine Oil Cooler- Engine: 3.6L Pentastar VVT V6- Front And Rear Anti-Roll Bars
- GVWR: 1,497 kgs (3,300 lbs)- Gas-Pressurized Shock Absorbers
- Hydraulic Power-Assist Steering- Leading Link Front Suspension w/Coil Springs
- Manual Transfer Case- Normal Duty Suspension- Part-Time Four-Wheel Drive
- Single Stainless Steel Exhaust- Solid Axle Rear Suspension w/Coil Springs
- Towing Equipment -inc: Trailer Sway Control- Transmission: 6-Speed Manual

FIRECRACKER RED

RADIO: UCONNECT 130 AM/FM/CD/MP3

BLACK, CLOTH BUCKET SEATS

PERFORMANCE SUSPENSION

TIRES: LT255/75R17 BSW OFF ROAD

WHEELS: 17" X 7.5" POLISHED MINERAL GREY

Option Packages Total

\$400

*Est. payment based on vehicle price (excluding taxes and fees) and associated lender rates for qualified buyers, term length and any associated trade-in equity or down payment from buyer. Contingent upon seller's acceptance of these terms. Terms may vary.

Addison Autoplex
addisonautoplex.com
 (469) 677-0905
 4103 Billy Mitchell Dr
 Addison, TX 75001

© 2023 AutoRevo - All rights reserved. - Powered by AutoRevo